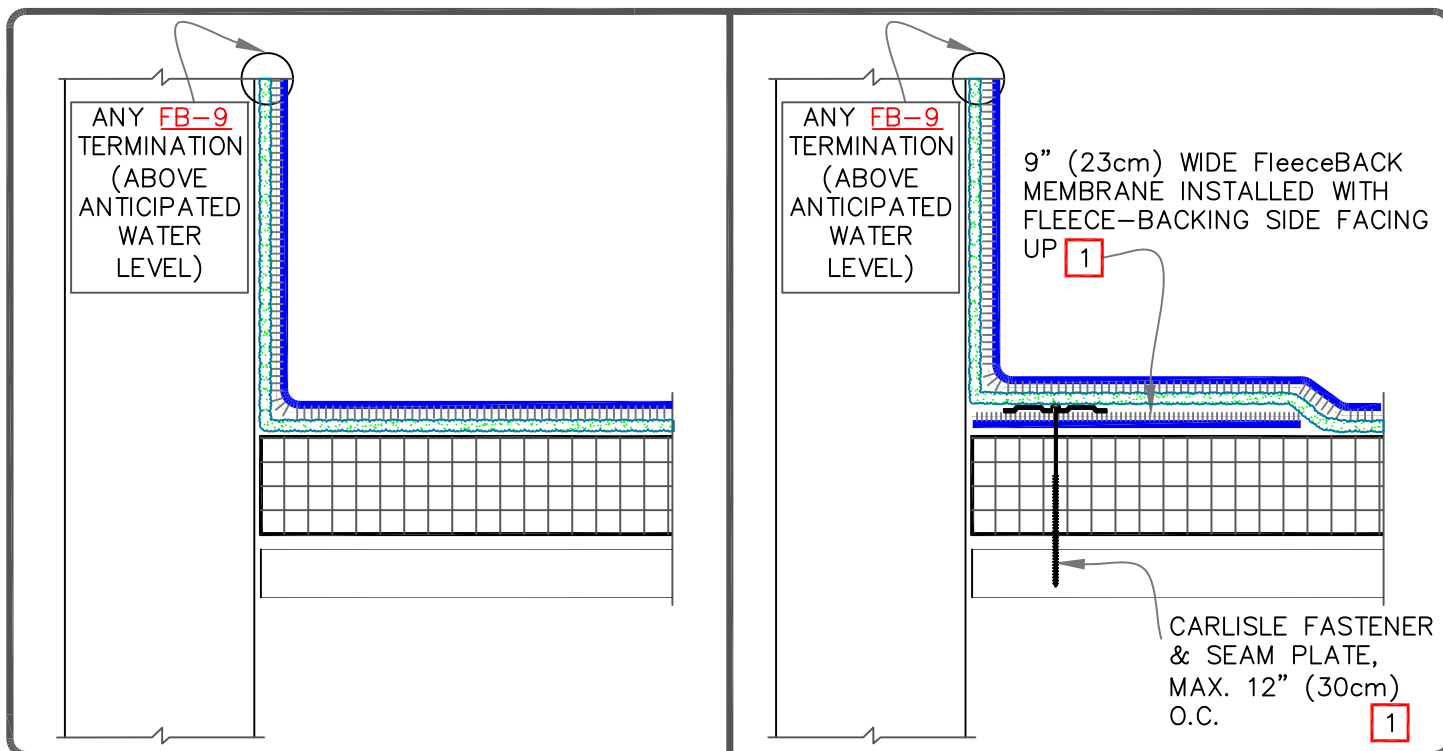



CAUTION

REFER TO [DETAIL FB-12C](#) WHEN USING AQUA BASE 120 ADHESIVE OR HYDROBOND.

## NOTES:

1. MECHANICALLY FASTENED BASE SECUREMENT IS REQUIRED WHEN ANY ONE OF THE FOLLOWING MAY OCCUR:
  - 1.1. SPECIFIED WARRANTIES GREATER THAN 20-YEARS.
  - 1.2. WARRANTY WIND SPEEDS GREATER THAN 90MPH.
  - 1.3. PROJECTS WITH CONTROL OR EXPANSION JOINTS OR ANTICIPATED BUILDING MOVEMENT.
  - 1.4. WHEN FLEECEBACK MEMBRANE IS INSTALLED DIRECTLY OVER AN EXISTING SINGLE-PLY ROOF.
2. PRESSURE-SENSITIVE EPDM T-JOINT COVER OR 6" (15cm) WIDE PRESSURE-SENSITIVE FLASHING, IN CONJUNCTION WITH EPDM PRIMER, MUST BE CENTERED OVER EPDM FIELD SPLICES AT THE ANGLE CHANGE. PROJECTS WITH 25 OR 30-YEAR WARRANTIES OR WHEN USING 145-MIL MEMBRANE, FIELD SPLICES SHALL BE OVERLAID WITH TWO LAYERS OF PRESSURE-SENSITIVE ELASTOFORM FLASHING. THE BOTTOM LAYER SHALL BE 6" (15cm) WIDE COVERED WITH A 12" WIDE TOP LAYER (30cm). BOTH LAYERS SHALL BE CENTERED AND TOP LAYER SEALED WITH CONTINUOUS LAP SEALANT.
3. WHEN THE USE OF FLEXIBLE FAST ADHESIVE (FULL SPRAY) IS NOT FEASIBLE ON THE VERTICAL SUBSTRATE. SEE APPROPRIATE PDS FOR INSTALLATION INSTRUCTIONS FOR BONDING ADHESIVE.

	PARAPET/CURB WITH CONTINUOUS MEMBRANE – FULL COVERAGE  MAXIMUM WARRANTY: 30 YEARS	<div data-bbox="1193 1879 1299 1984">  </div> <div data-bbox="1299 1879 1521 1984">           DETAIL NO.  <b>FB-12B.1A</b> </div> <div data-bbox="1209 1984 1502 2024"> <b>FLEECEBACK ADHERED</b> </div>
---	---	---