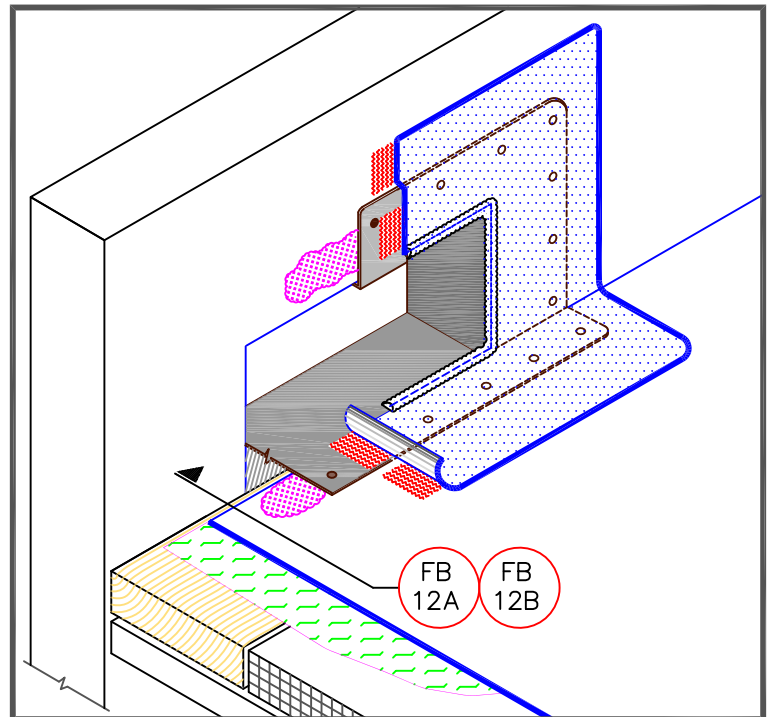


## NOTES:

1. WOOD NAILERS ARE INSTALLED ONLY AT SCUPPERS TO SECURE METAL SLEEVE AND MUST EXTEND PAST THE WIDTH OF METAL SLEEVE FLANGE.
2. INSTALL WALL FLASHING PRIOR TO SCUPPER INSTALLATION.
3. METAL SCUPPER BOX MUST HAVE CONTINUOUS FLANGES WITH ROUNDED CORNERS. SOLDER ALL SCUPPER SEAMS WATER-TIGHT.
4. WATER CUT-OFF MASTIC UNDER SCUPPER FLANGE MUST BE UNDER CONSTANT COMPRESSION.
5. SCUPPER FLANGES MUST BE TOTALLY COVERED BY THERMOPLASTIC NON-REINFORCED FLASHING WITH MINIMUM 2" (5cm) COVERAGE PAST NAIL HEADS.
6. UNIVERSAL SINGLE-PLY SEALANT IS REQUIRED AT FLASHING EDGES ON SCUPPER EDGE. WHEN USING TPO MEMBRANE, TPO PRIMER MUST BE USED TO PREPARE SURFACES PRIOR TO THE APPLICATION OF SEALANT.



	— FleeceBACK MEMBRANE
	— FLEX FAST/AQUABASE
	— APPROVED SUBSTRATE
	— SEE NOTE(S)

THROUGH-WALL SCUPPER WITH  
SecurWELD OR SURE-FLEX METAL

MAXIMUM WARRANTY: 30 YEARS



DETAIL NO.

FB-18B.1

FLEECEBACK ADHERED