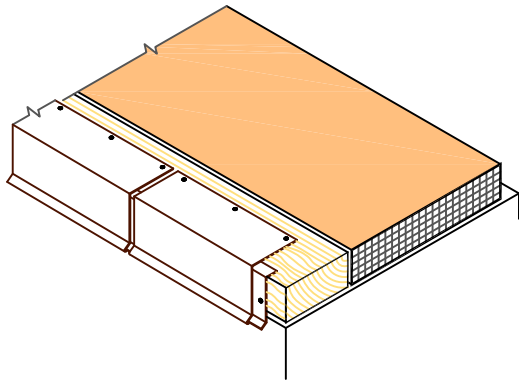


## NOTES:

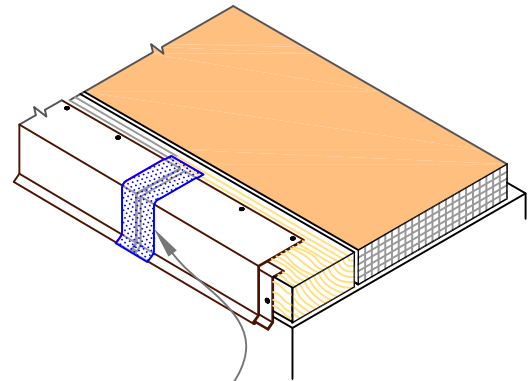
1. APPROXIMATELY 1/8" (0.5cm) DIAMETER BEAD OF CUT-EDGE SEALANT IS REQUIRED ON CUT EDGES OF REINFORCED TPO MEMBRANE.
2. WOOD NAILER MUST EXTEND PAST TOTAL WIDTH OF METAL FASCIA DECK FLANGE.
3. POSITION MEMBRANE WITH SELVAGE EDGE TO AVOID REMOVAL OF FLEECE BACKING.

1



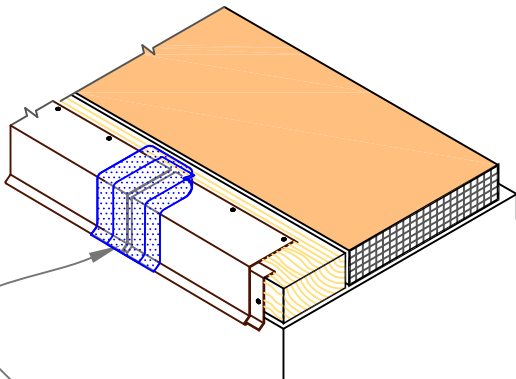
INSTALL CONTINUOUS CLEAT AND COATED METAL WITH 1/8"-1/4" (0.5-1cm) JOINTS BETWEEN ADJOINING SECTIONS.

2



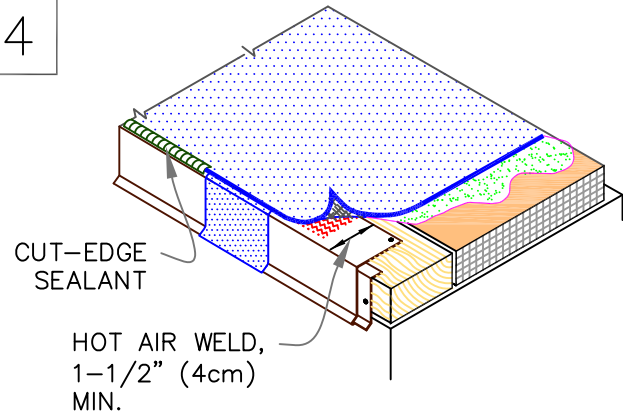
HEAT WELD 3" (7.5cm) WIDE PIECE OF NON-REINFORCED THERMOPLASTIC MEMBRANE OVER JOINT

3

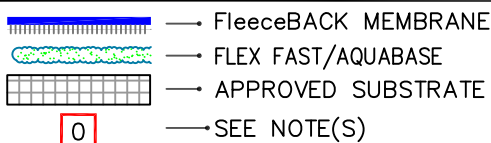


HEAT WELD 6" (15cm) WIDE PIECE OF NON-REINFORCED THERMOPLASTIC MEMBRANE OVER JOINT

4



POSITION FIELD MEMBRANE AND HEAT WELD TO COATED METAL A MINIMUM OF 1-1/2" (4cm) AS SHOWN.



COATED DRIP EDGE FASCIA – TPO, PVC OR KEE HP

MAXIMUM WARRANTY: 30 YEARS

DETAIL NO.

FB-1B.1

FLEECEBACK ADHERED