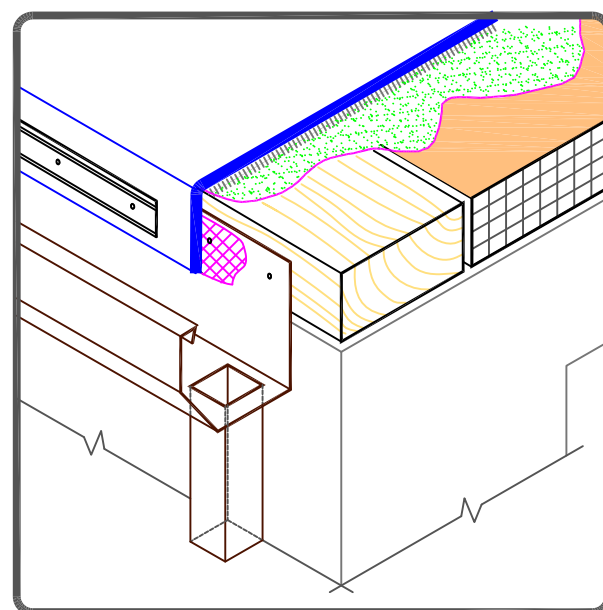


NOTES:

1. POSITION MEMBRANE WITH SELVAGE EDGE AT TERMINATION BAR LOCATION TO AVOID REMOVAL OF FLEECE BACKING.
2. FASTENING OF METAL TERMINATION BAR MUST PROVIDE CONSTANT COMPRESSION ON WATER CUT-OFF MASTIC.
3. ALLOW MEMBRANE SHEET TO EXTEND 1/2" (1.5cm) MINIMUM BELOW THE METAL TERMINATION BAR.



	— FleeceBACK MEMBRANE
	— FLEX FAST/AQUABASE
	— APPROVED SUBSTRATE
	— SEE NOTE(S)

METAL BAR EDGE TERMINATION

MAXIMUM WARRANTY: 30 YEARS



DETAIL NO.

FB-1C.1

FLEECEBACK ADHERED