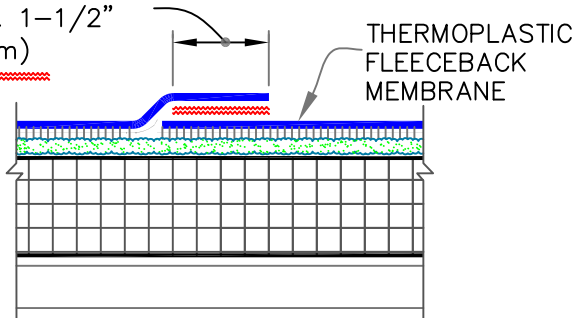


MEMBRANE SPLICE

HOT AIR WELD
MIN. 1-1/2"
(4cm)

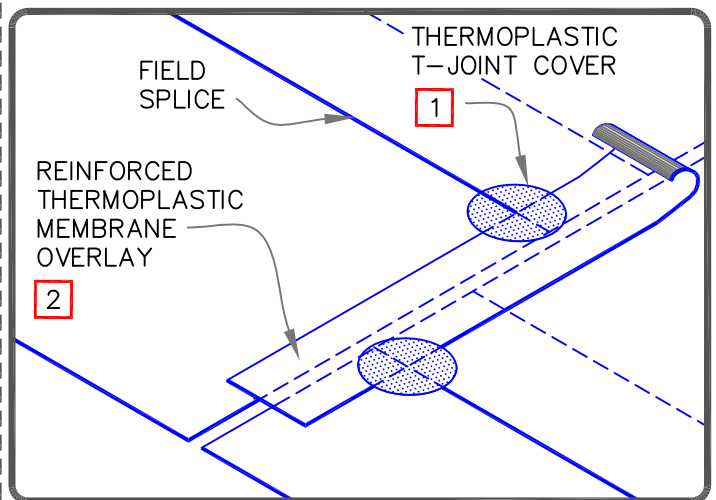
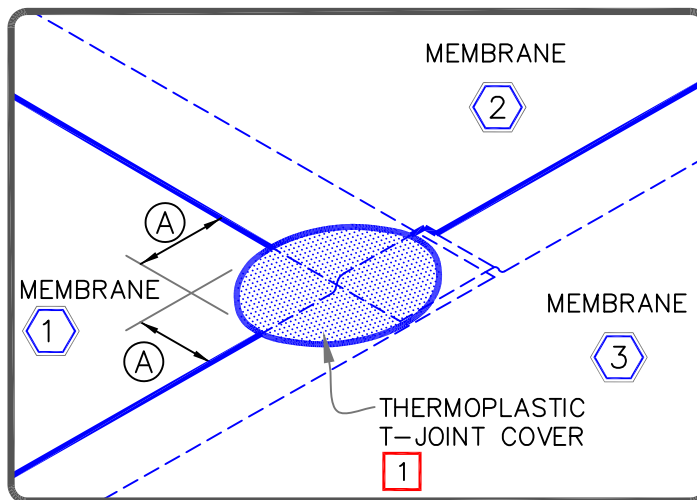
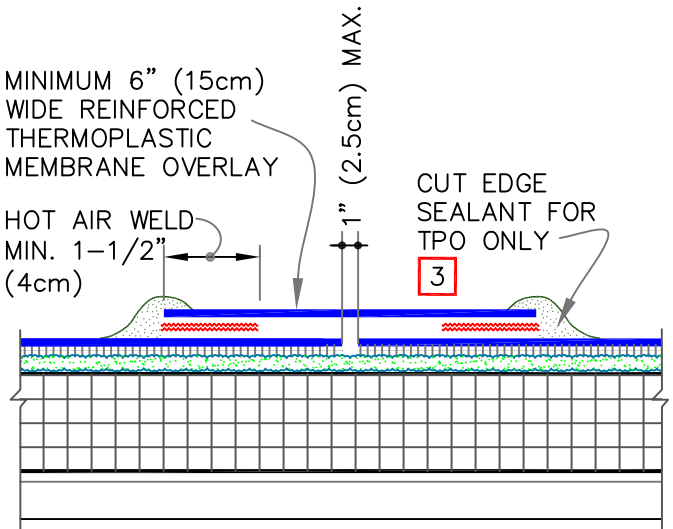


END LAP SPLICE

MINIMUM 6" (15cm)
WIDE REINFORCED
THERMOPLASTIC
MEMBRANE OVERLAY

HOT AIR WELD
MIN. 1-1/2"
(4cm)

CUT EDGE
SEALANT FOR
TPO ONLY



DIMENSION	cm
(A) 2-1/4"	6

NOTES:

1. WHEN USING 115-MIL TPO OR 135-MIL TPO, 135-MIL PVC OR KEE HP FLEECEBACK MEMBRANE, APPLY A 4-1/2" (11cm) DIAMETER THERMOPLASTIC "T-JOINT" COVER AT ALL FIELD SPLICE INTERSECTIONS.
2. WHEN USING 60 OR 80 MIL THERMOPLASTIC REINFORCED MEMBRANE OVERLAY, INTERSECTIONS BETWEEN SPLICES MUST BE OVERLAID WITH A 4-1/2" (11cm) DIAMETER THERMOPLASTIC "T-JOINT" COVER.
3. APPROXIMATELY 1/8" (0.5cm) DIAMETER BEAD OF CUT-EDGE SEALANT IS REQUIRED ON CUT EDGES OF REINFORCED TPO MEMBRANE.
4. WHEN USING 115-MIL FLEECEBACK TPO, MAXIMUM WARRANTY IS 20 YEARS

	— FleeceBACK MEMBRANE
	— FLEX FAST/AQUABASE
	— APPROVED SUBSTRATE
	— SEE NOTE(S)

THERMOPLASTIC MEMBRANE SPLICES

MAXIMUM WARRANTY: 30 YEARS



DETAIL NO.

FB-2B.1

FLEECEBACK ADHERED