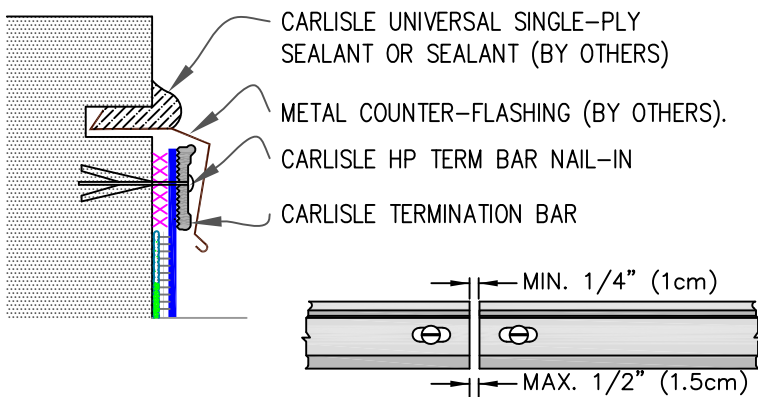


9A

MECHANICAL TERMINATION WITH COUNTER FLASHING

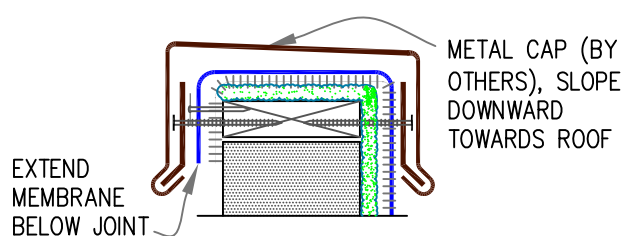


NOTES:

1. APPLY ON HARD SMOOTH SURFACE ONLY; NOT FOR USE ON EXPOSED WOOD.
2. DO NOT WRAP TERMINATION BAR AROUND CORNERS.
3. FLEECE-BACKING MUST BE REMOVED FROM THE MEMBRANE SO THAT WATER CUT-OFF MASTIC IS IN DIRECT CONTACT.
4. DETAIL REQUIRED FOR USE ON WARRANTY PROJECTS EXCEEDING 20-YEARS. MAY BE USED FOR ANY PROJECT REGARDLESS OF WARRANTY.
5. DETAIL 9E MUST BE USED AT VERTICAL JOINTS IN PANEL WALLS.

9B

SHEET METAL COPING

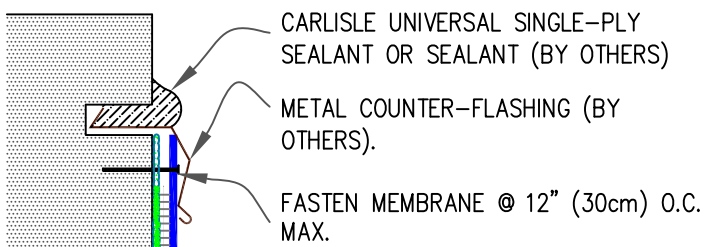


NOTES:

1. FOR CARLISLE SecurEdge COPING, REFER TO INSTALLATION INSTRUCTIONS PUBLISHED SEPARATELY.
2. MEMBRANE MUST BE EXTENDED TO CORNERS TO PROVIDE COMPLETE COVERAGE OF THE TOP WALL SURFACE.

9C

COUNTER FLASHING TERMINATION

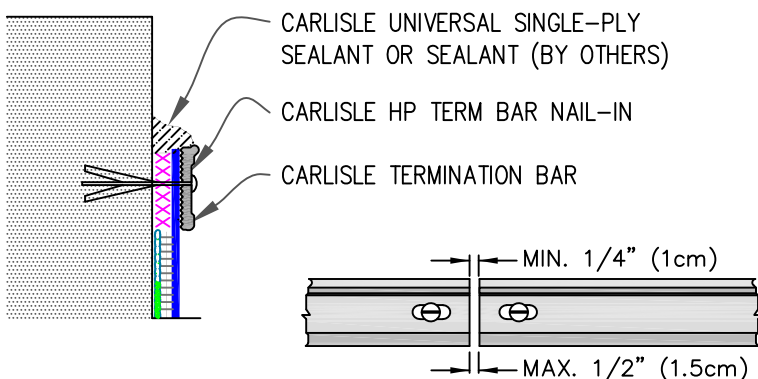


NOTES:

1. WHEN MECHANICAL FASTENERS ARE USED TO PENETRATE THE METAL COUNTER-FLASHING, USE EPDM WASHERS, APPLY WATER CUT-OFF MASTIC UNDER THE COUNTER-FLASHING OR CAULK THE FASTENER HEADS.
2. DETAIL NOT FOR USE ON WARRANTY PROJECTS EXCEEDING 10-YEARS.

9D

MECHANICAL TERMINATION

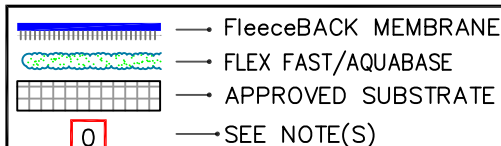


NOTES:

1. APPLY ON HARD SMOOTH SURFACE ONLY; NOT FOR USE ON EXPOSED WOOD.
2. DO NOT WRAP TERMINATION BAR AROUND CORNERS.
3. FLEECE-BACKING MUST BE REMOVED FROM THE MEMBRANE SO THAT WATER CUT-OFF MASTIC IS IN DIRECT CONTACT.
4. DETAIL NOT FOR USE ON WARRANTY PROJECTS EXCEEDING 20-YEARS.
5. DETAIL 9E MUST BE USED AT VERTICAL JOINTS IN PANEL WALLS.

..... APPLICABLE BONDING ADHESIVE

xxx WATER CUT-OFF MASTIC- MUST BE HELD UNDER CONSTANT COMPRESSION.



MEMBRANE TERMINATIONS (PAGE 1 OF 2)

MAXIMUM WARRANTY: 30 YEARS



DETAIL NO.

FB-9

FLEECEBACK ADHERED