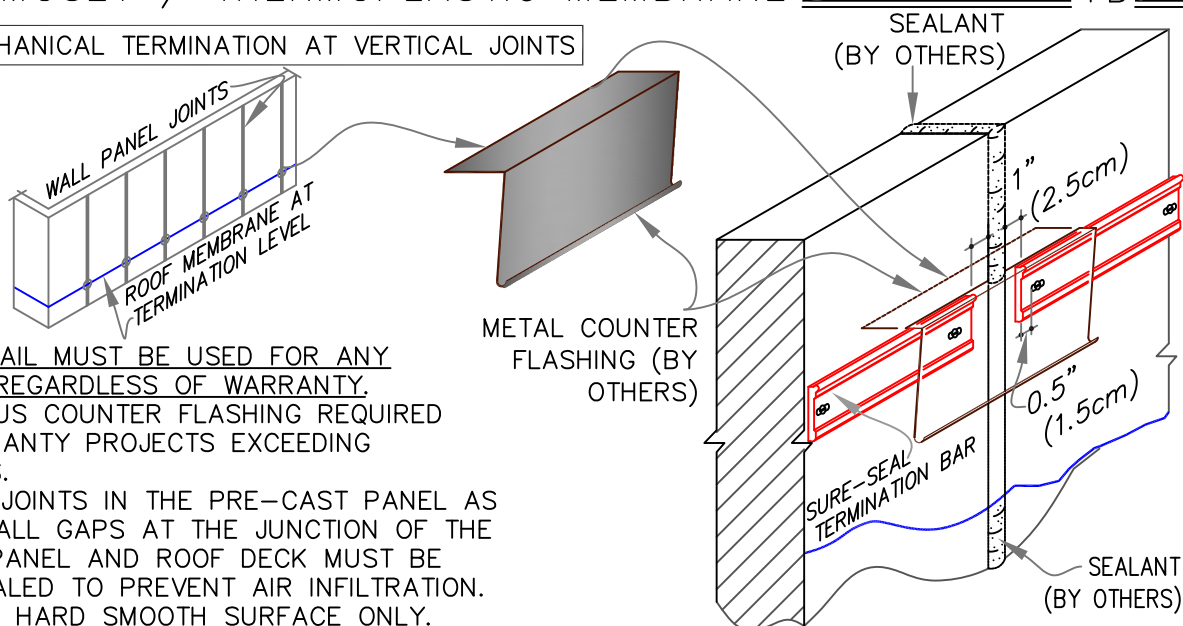


9E MECHANICAL TERMINATION AT VERTICAL JOINTS

NOTES:

1. THIS DETAIL MUST BE USED FOR ANY PROJECT REGARDLESS OF WARRANTY.
2. CONTINUOUS COUNTER FLASHING REQUIRED FOR WARRANTY PROJECTS EXCEEDING 20-YEARS.
3. VERTICAL JOINTS IN THE PRE-CAST PANEL AS WELL AS ALL GAPS AT THE JUNCTION OF THE TILT-UP PANEL AND ROOF DECK MUST BE FULLY SEALED TO PREVENT AIR INFILTRATION.
4. APPLY ON HARD SMOOTH SURFACE ONLY.
5. THIS DETAIL MUST BE USED FOR ANY PROJECT REGARDLESS OF WARRANTY.



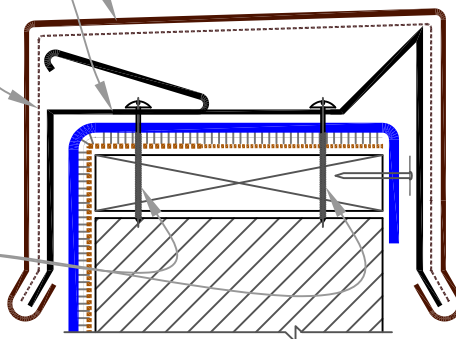
9F SecurEDGE COPING

SecurEdge 200 & 300

COPING

20 GA. GALVANIZED ANCHOR
CLIPS @ 6 FEET (180cm) O.C.CONCEALED SPLICE PLATE AT
EACH JOINT OF COPING

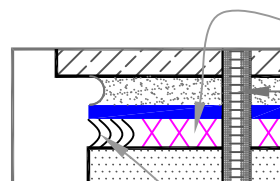
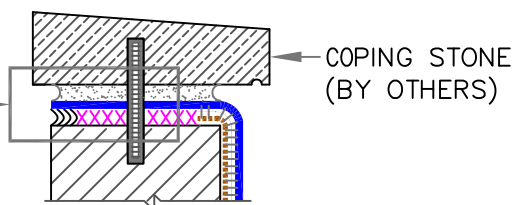
HEX-HEAD FASTENERS



NOTES:

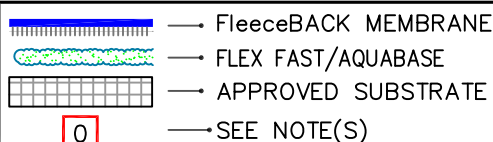
1. MEMBRANE MUST BE EXTENDED AT CORNERS TO PROVIDE COMPLETE COVERAGE OF THE TOP WALL SURFACE. REFER TO [DETAIL U-9B](#).
2. REFER TO [SecurEdge COPING INSTALLATION INSTRUCTION](#) MANUAL FOR STEP-BY-STEP INSTRUCTION PROCEDURES.

9G COPING STONE TERMINATION

SEE INSET
ON RIGHT

WATER CUT-OFF
MASTIC AROUND
DOWEL OR ANCHOR
DOWEL OR ANCHOR
(BY OTHERS)
SEALANT UNDER
THE MEMBRANE LIP
(BY OTHERS)

..... APPLICABLE BONDING ADHESIVE

xxx WATER CUT-OFF MASTIC- MUST BE
HELD UNDER CONSTANT COMPRESSION.MEMBRANE TERMINATIONS (PAGE 2
OF 2)

MAXIMUM WARRANTY: 30 YEARS



DETAIL NO.

FB-9

FLEECEBACK ADHERED