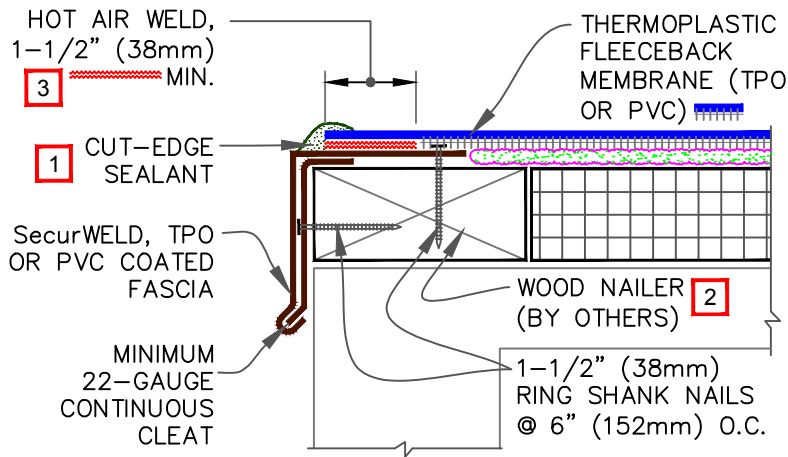


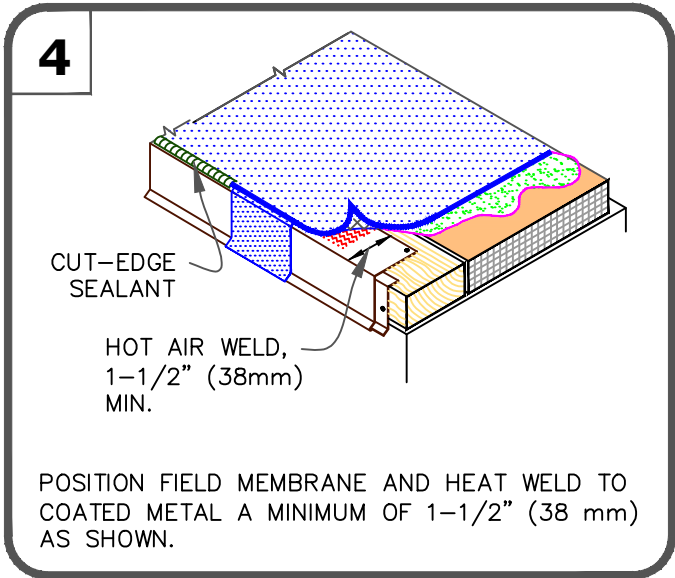
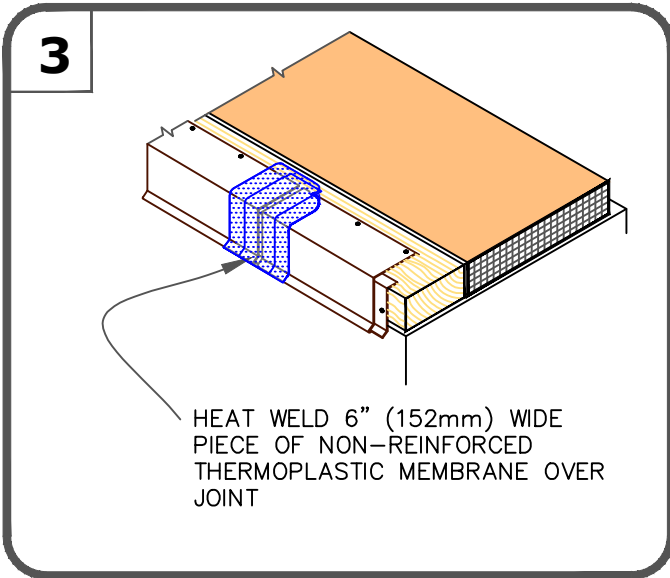
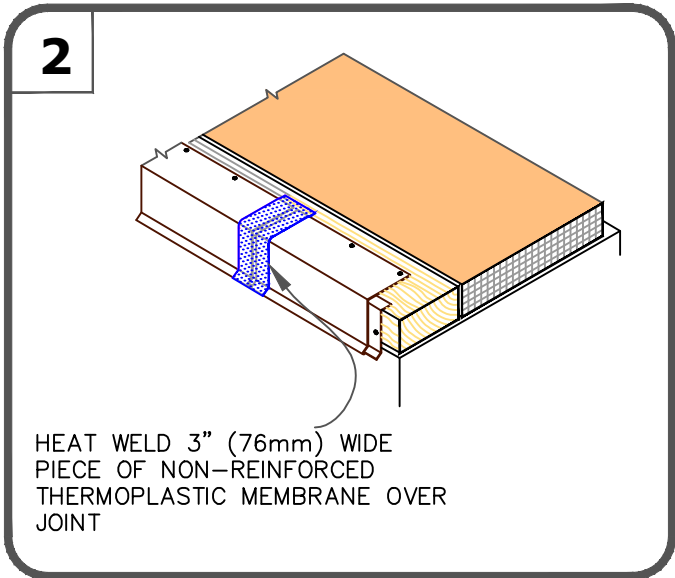
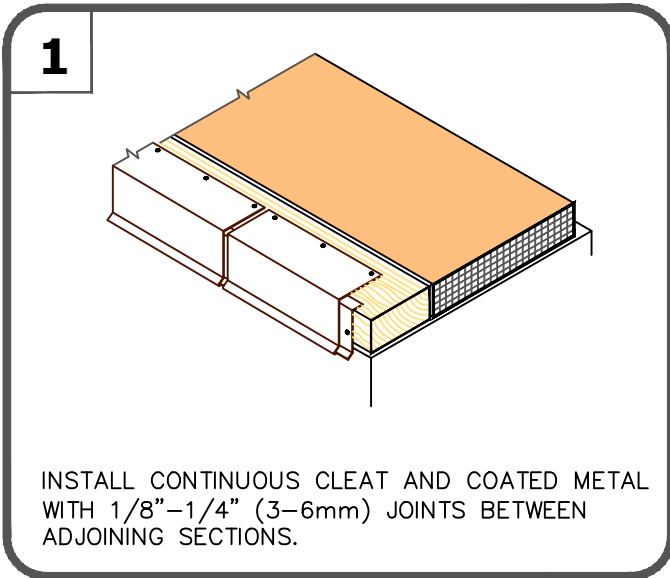
THERMOPLASTIC MEMBRANE

FB



NOTES:

1. APPROXIMATELY 1/8" (3mm) DIAMETER BEAD OF CUT-EDGE SEALANT IS REQUIRED ON CUT EDGES OF REINFORCED TPO MEMBRANE AND RECOMMENDED ON CUT EDGES OF PVC MEMBRANE.
2. WOOD NAILER MUST EXTEND PAST TOTAL WIDTH OF METAL FASCIA DECK FLANGE.
3. POSITION MEMBRANE WITH SELVAGE EDGE TO AVOID REMOVAL OF FLEECE BACKING.



	<p>→ FleeceBACK MEMBRANE</p> <p>→ FAST ADHESIVE/AQUABASE</p> <p>→ APPROVED SUBSTRATE</p> <p>0 → SEE NOTE(S)</p>
--	--

SecurWELD COATED DRIP EDGE FASCIA - TPO OR PVC

For additional information, refer to Specifications



DETAIL NO.

FB-1B

FLEECEBACK ADHERED