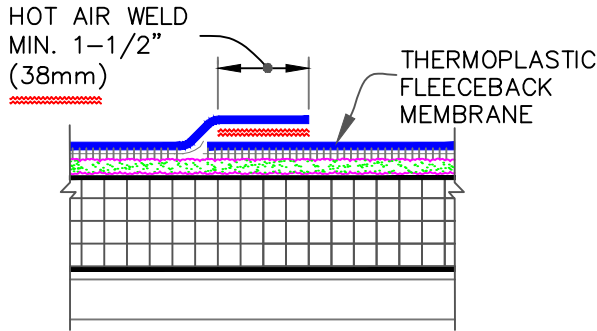
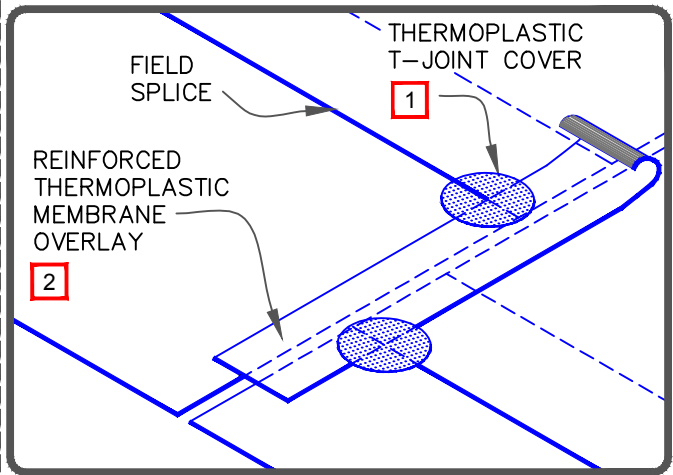
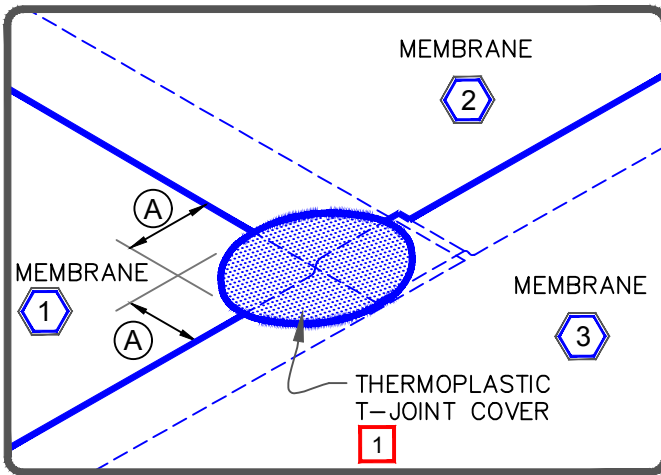
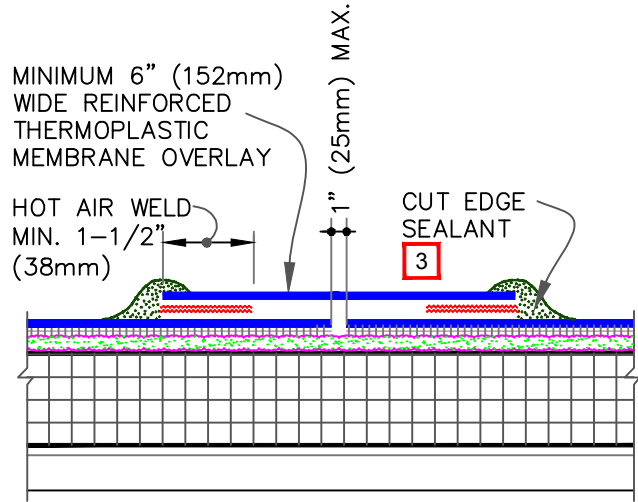


MEMBRANE SPLICE



END LAP SPLICE



DIMENSION	mm
(A)	2-1/4" 57

NOTES:

1. WHEN USING 115 OR 135-MIL THERMOPLASTIC FLEECEBACK MEMBRANE, APPLY A 4-1/2" DIAMETER THERMOPLASTIC "T-JOINT" COVER AT ALL FIELD SPLICE INTERSECTIONS.
2. WHEN USING 60 OR 80 MIL THERMOPLASTIC REINFORCED MEMBRANE OVERLAY, INTERSECTIONS BETWEEN SPLICES MUST BE OVERLAID WITH A 4-1/2" (114mm) DIAMETER THERMOPLASTIC "T-JOINT" COVER.
3. APPROXIMATELY 1/8" (3mm) DIAMETER BEAD OF CUT-EDGE SEALANT IS REQUIRED ON CUT EDGES OF REINFORCED TPO MEMBRANE AND RECOMMENDED ON CUT EDGES OF SURE-FLEX PVC MEMBRANE.

	<p>→ FleeceBACK MEMBRANE</p> <p>→ FAST ADHESIVE/AQUABASE</p> <p>→ APPROVED SUBSTRATE</p> <p>→ SEE NOTE(S)</p>
--	---

THERMOPLASTIC MEMBRANE SPLICES

For additional information, refer to Specifications



DETAIL NO.

FB-2B

FLEECEBACK ADHERED