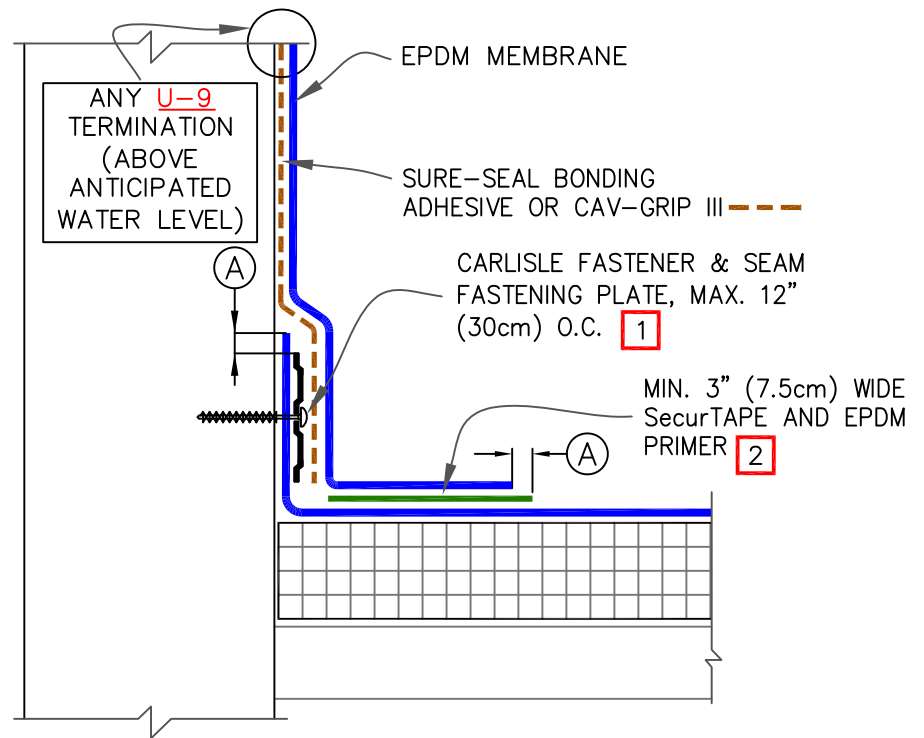


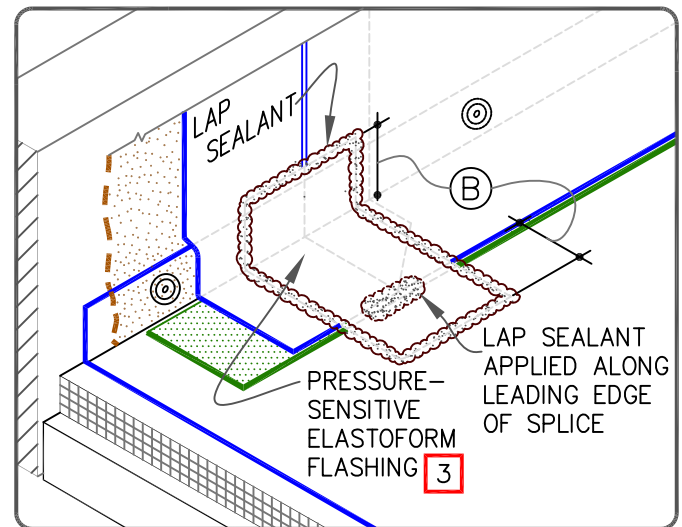
OPTIONAL: SEAM  
PLATE/FASTENER MAY BE  
INSTALLED INTO THE  
STRUCTURAL DECK UP TO 6"  
(15cm) FROM ANGLE CHANGE.



DIMENSIONS		cm	
(A)	1/8"	0.5	TO
	1/2"	1.5	MAX.
(B)	3"	7.5	

#### NOTES:

1. FASTENERS AND PLATES ARE REQUIRED AT 6"(15cm) O.C. FOR ADHERED SYSTEMS WITH WARRANTY WIND SPEED COVERAGE GREATER THAN 90 MPH AND FOR ALL PROJECTS WITH WARRANTIES GREATER THAN 20 YEARS. HP FASTENERS AND POLYMER SEAM PLATES ARE REQUIRED OVER STEEL DECKS ON MECHANICALLY FASTENED SYSTEMS.
2. USE 6" (15cm) WIDE SecurTAPE FOR 25/30 YEAR WARRANTIES. LAP SEALANT IS REQUIRED ON CUT EDGES OF REINFORCED MEMBRANE.
3. PROJECTS WITH 25 AND 30-YEAR WARRANTIES OR WHEN USING 90-MIL MEMBRANE, REFER TO [DETAIL U-2C](#).



PARAPET / CURB WITH SEPARATE  
MEMBRANE FLASHING

MAXIMUM WARRANTY: 30 YEARS



DETAIL NO.

U-12B

THERMOSET UNIVERSAL