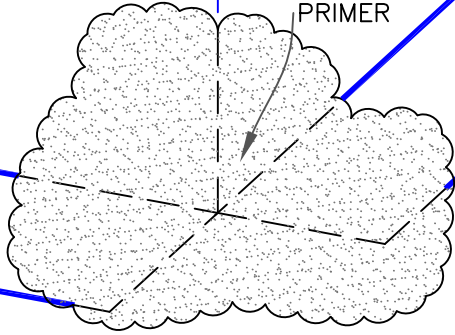
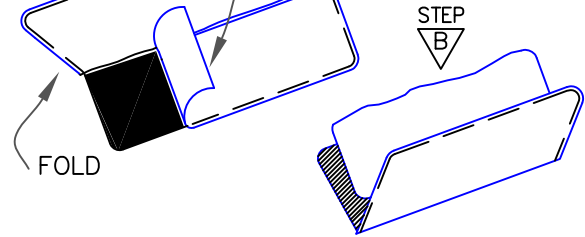


1

EPDM
PRIMER

CLEAN EPDM SPLICE AREA PRIOR TO APPLYING EPDM PRIMER.

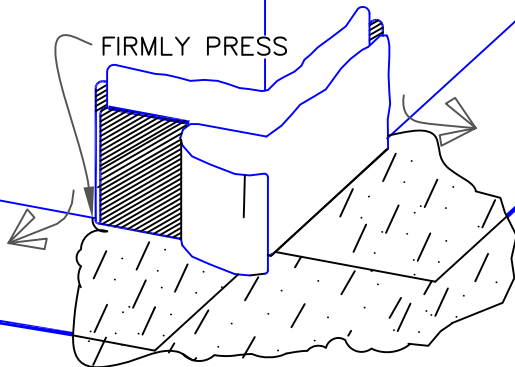
2

STEP
ACLEAR POLY
RELEASE PAPER

PRIOR TO PLACEMENT OF SURE-SEAL CORNER, PEEL OFF THE BLUE POLY RELEASE FILM AND HEAT THE FLASHING SIDE WITH A HEAT GUN. RE-APPLY THE POLY LOOSELY. FOLD THE FLASHING IN HALF.

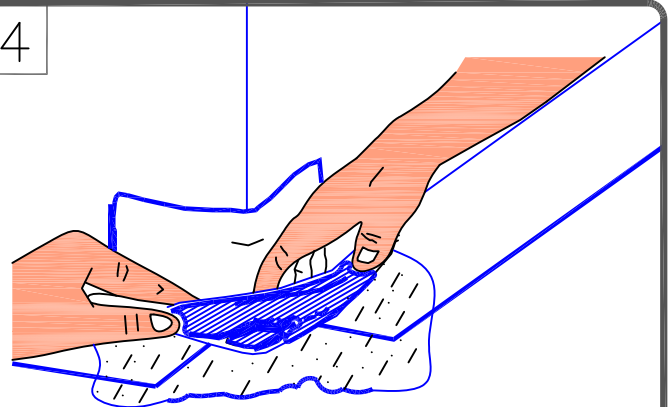
3

FIRMLY PRESS



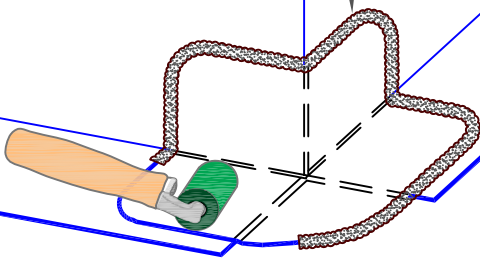
PLACE SURE-SEAL INSIDE/OUTSIDE CORNER AS SHOWN AND REMOVE RELEASE PAPER. PRESS FOLDED FLASHING TIGHTLY INTO ANGLE CHANGE AND FIRMLY PRESS FLASHING AGAINST THE VERTICAL SURFACE.

4



PLACE FOLDED FLASHING TIGHTLY INTO ANGLE CHANGE AND FIRMLY PRESS FLASHING ONTO THE DECK FLANGE BY PRESSING THE FLASHING AGAINST THE HORIZONTAL SURFACE.

5

LAP
SEALANT

ROLL WITH A TWO INCH WIDE ROLLER. PAY PARTICULAR ATTENTION TO THE STEP OFFS AND ANGLE CHANGE.

NOTE:

FOR PROJECTS WITH 25 & 30-YEAR WARRANTIES OR WHEN USING 90-MIL MEMBRANE, REFER TO [DETAIL U-15G.1](#) FOR REQUIRED FLASHING ENHANCEMENTS.

CARLISLE
SYNTEC SYSTEMS

OUTSIDE CORNER WITH PRE-CUT
PRESSURE-SENSITIVE CORNER

MAXIMUM WARRANTY: 20 YEARS



DETAIL NO.

U-15E

THERMOSET UNIVERSAL