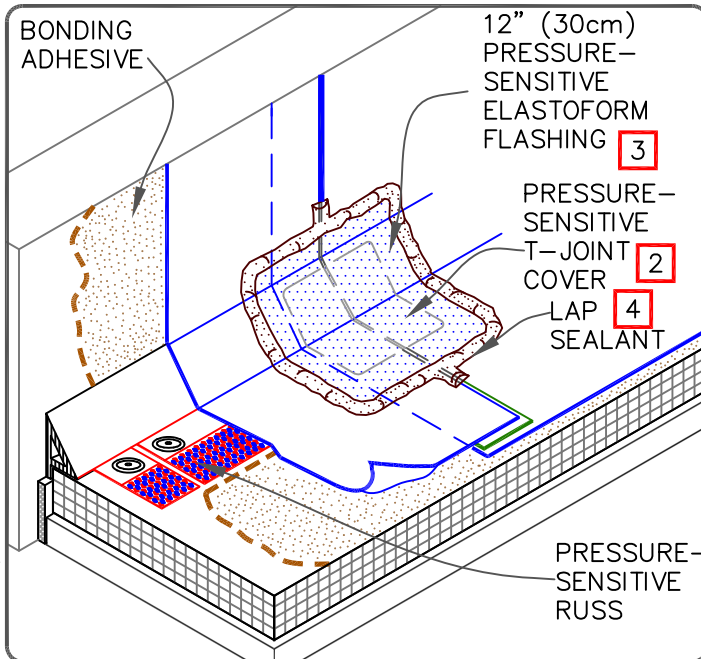
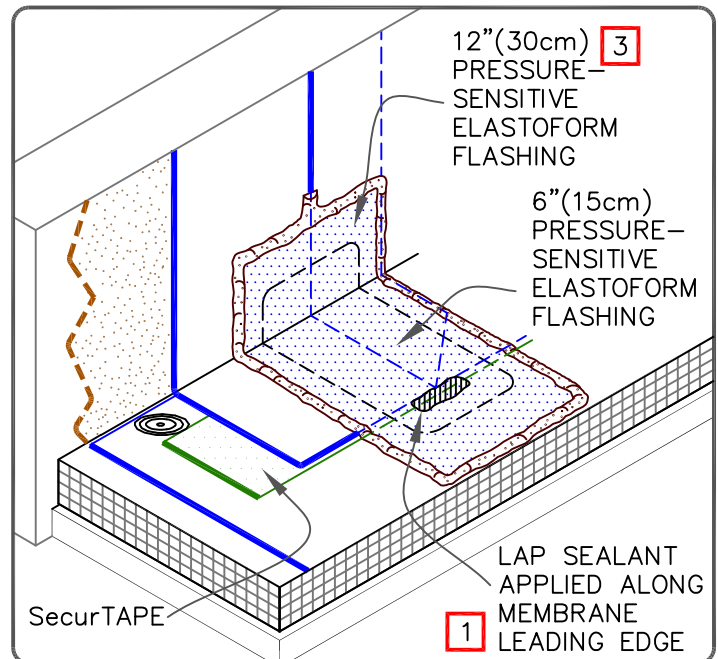


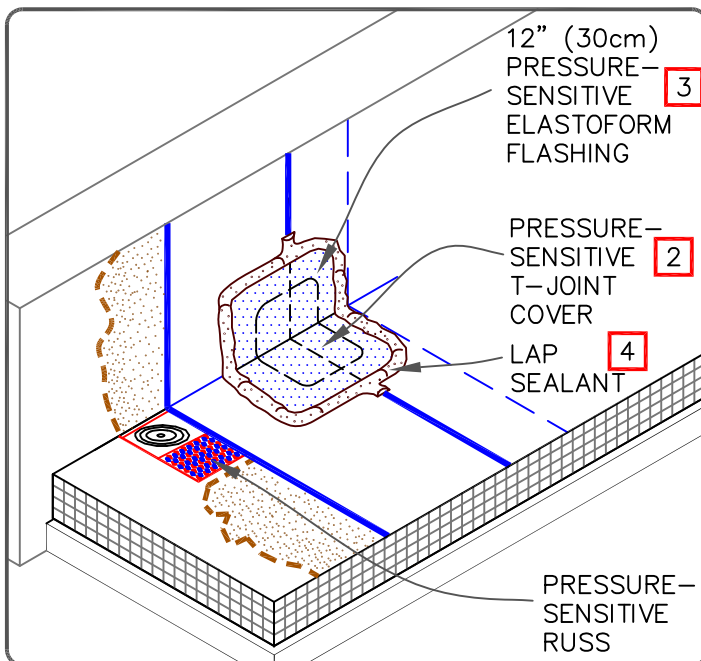
## CONTINUOUS WALL FLASHING



## SEPARATE WALL FLASHING



## CONTINUOUS WALL FLASHING



## NOTES:

1. APPLY LAP SEALANT ALONG THE LEADING EDGE OF THE MEMBRANE SPLICE (UNDER THE PRESSURE-SENSITIVE ELASTOFORM FLASHING) COVERING THE EXPOSED SPLICE TAPE APPROXIMATELY 1/2" (1.5cm) BEYOND THE SPLICE EDGE.
2. PRESSURE-SENSITIVE T-JOINT COVER OR 6" (15cm) WIDE PRESSURE-SENSITIVE FLASHING, IN CONJUNCTION WITH EPDM PRIMER, MUST BE CENTERED OVER FIELD SPLICES AT THE ANGLE CHANGE.
3. PROJECTS WITH 25 AND 30-YEAR WARRANTIES OR WHEN USING 90-MIL MEMBRANE REQUIRE FIELD SPLICES TO BE OVERLAID WITH TWO LAYERS OF PRESSURE-SENSITIVE ELASTOFORM FLASHING. THE BOTTOM LAYER SHALL BE 6" (15cm) WIDE COVERED WITH A 12" (30cm) WIDE TOP LAYER. BOTH LAYERS SHALL BE CENTERED.
4. SEAL EXPOSED LAYER WITH LAP SEALANT.



EPDM MEMBRANE SPLICES AT ANGLE CHANGE

MAXIMUM WARRANTY: 30 YEARS



DETAIL NO.

U-2C

THERMOSET UNIVERSAL