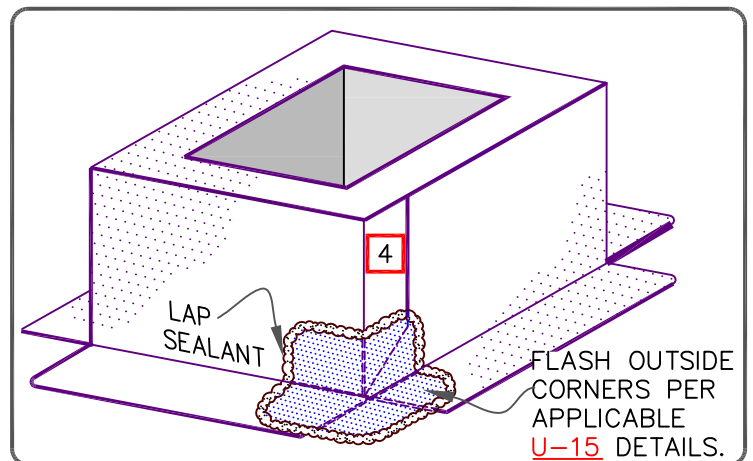
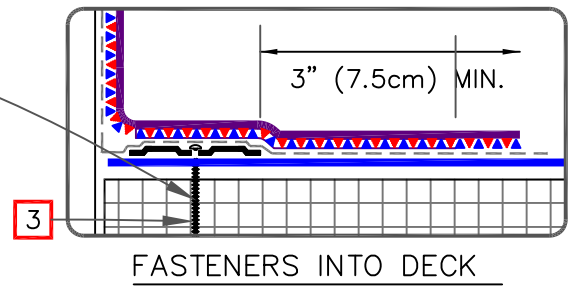


CARLISLE FASTENER &  
SEAM PLATES, MAX. 12"  
(30cm) O.C.

NOTES:

1. WHEN MECHANICAL FASTENERS ARE USED TO PENETRATE THE METAL COUNTER-FLASHING, USE EPDM WASHERS, APPLY WATER CUT-OFF MASTIC UNDER THE COUNTER-FLASHING OR CAULK THE FASTENER HEADS.
2. 3" (7.5cm) FOR UP TO 20 YEARS AND 6" (15cm) FOR 25/30 YEARS.
3. HP FASTENERS AND POLYMER SEAM PLATES ARE REQUIRED FOR MECHANICALLY-FASTENED ROOFING SYSTEMS OVER STEEL DECKS.
4. IF THE VERTICAL SPLICE ON THE CURB FLASHING IS NOT LOCATED AT THE CORNER, USE DETAIL [U-2C](#) FOR EPDM MEMBRANE SPLICES AT ANGLE CHANGES.



CURB FLASHING – WITH 20"  
PRESSURE-SENSITIVE CURED  
FLASHING

MAXIMUM WARRANTY: 30 YEARS



DETAIL NO.

U-5C

THERMOSET UNIVERSAL