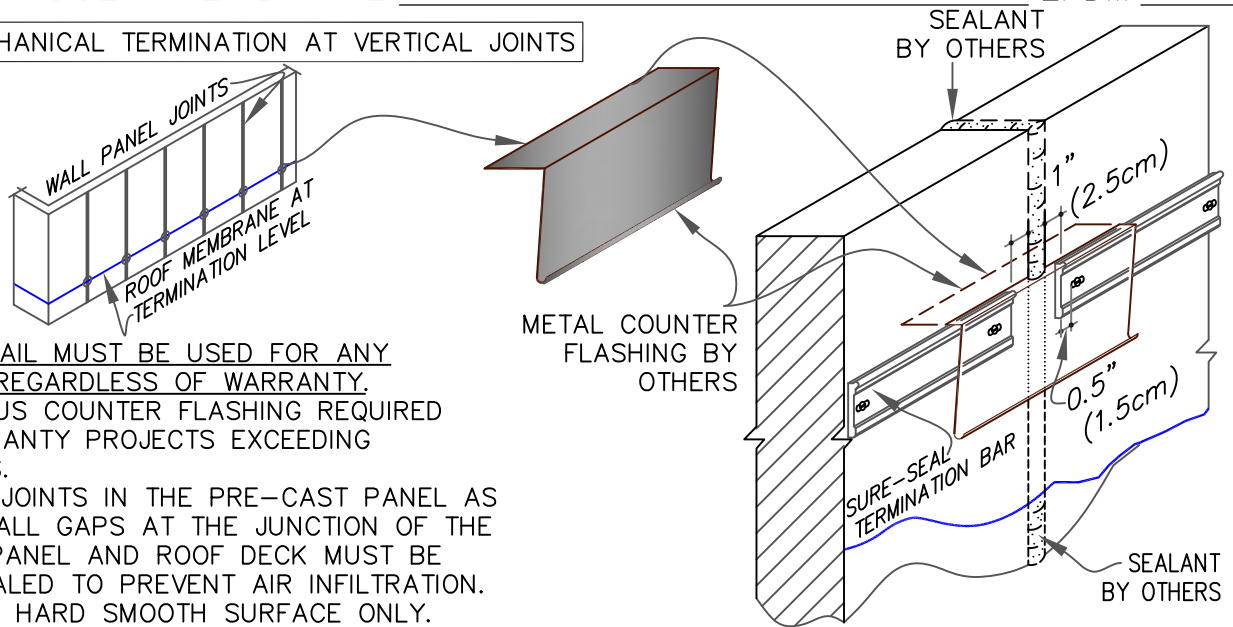


9E MECHANICAL TERMINATION AT VERTICAL JOINTS

NOTES:

1. THIS DETAIL MUST BE USED FOR ANY PROJECT REGARDLESS OF WARRANTY.
2. CONTINUOUS COUNTER FLASHING REQUIRED FOR WARRANTY PROJECTS EXCEEDING 20-YEARS.
3. VERTICAL JOINTS IN THE PRE-CAST PANEL AS WELL AS ALL GAPS AT THE JUNCTION OF THE TILT-UP PANEL AND ROOF DECK MUST BE FULLY SEALED TO PREVENT AIR INFILTRATION.
4. APPLY ON HARD SMOOTH SURFACE ONLY.



MAXIMUM WARRANTY: 30 YEARS

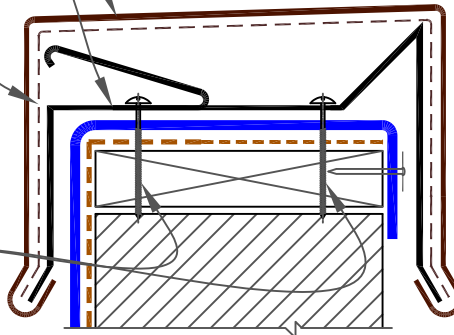
9F SecurEdge COPING

SecurEdge 200 & 300

COPING

20 GA. GALVANIZED ANCHOR
CLIPS @ 6 FEET (183cm) O.C.CONCEALED SPLICE PLATE AT
EACH JOINT OF COPING

HEX-HEAD FASTENERS

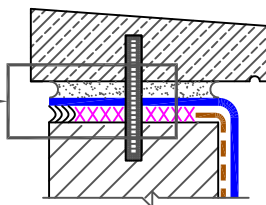
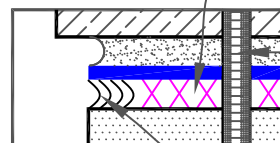


NOTE:

1. MEMBRANE MUST BE EXTENDED AT CORNERS TO PROVIDE COMPLETE COVERAGE OF THE TOP WALL SURFACE. REFER TO [DETAIL U-9B](#).

MAXIMUM WARRANTY: 30 YEARS

9G COPING STONE TERMINATION

SEE INSET
ON RIGHTCOPING STONE
BY OTHERSWATER CUT-OFF
MASTIC AROUND
DOWEL OR ANCHORDOWEL OR ANCHOR
BY OTHERSSEALANT UNDER
THE MEMBRANE LIP
BY OTHERS

MAXIMUM WARRANTY: 30 YEARS

--- APPLICABLE BONDING ADHESIVE

xxx WATER CUT-OFF MASTIC- MUST BE
HELD UNDER CONSTANT COMPRESSION.MEMBRANE TERMINATIONS PAGE 2 OF
2

MAXIMUM WARRANTY: 30 YEARS



DETAIL NO.

U-9

THERMOSET UNIVERSAL