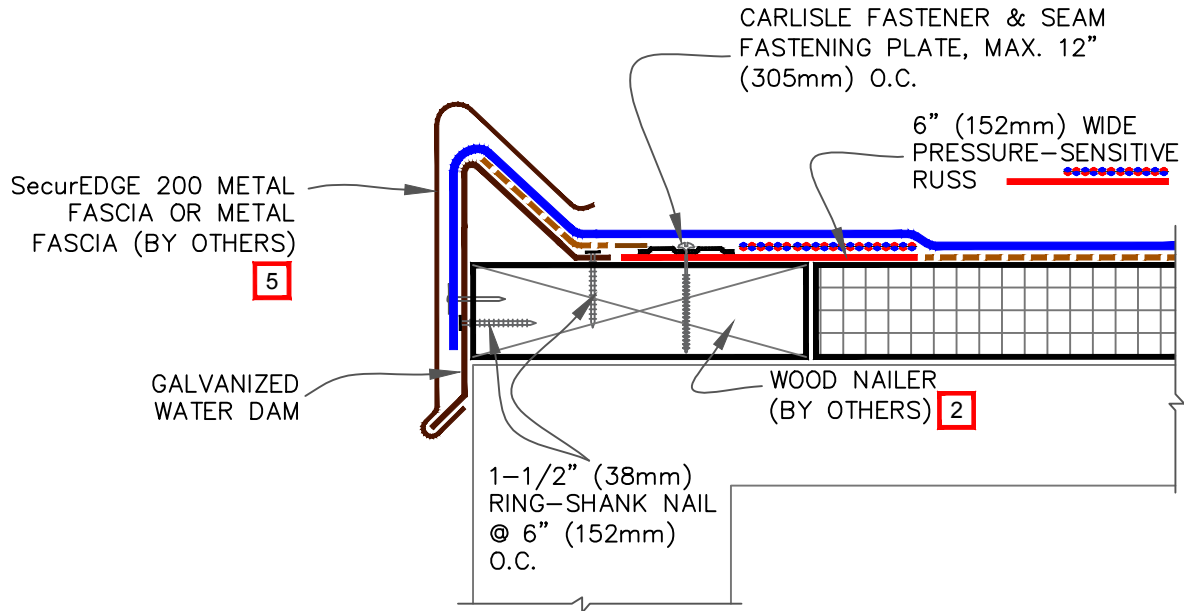


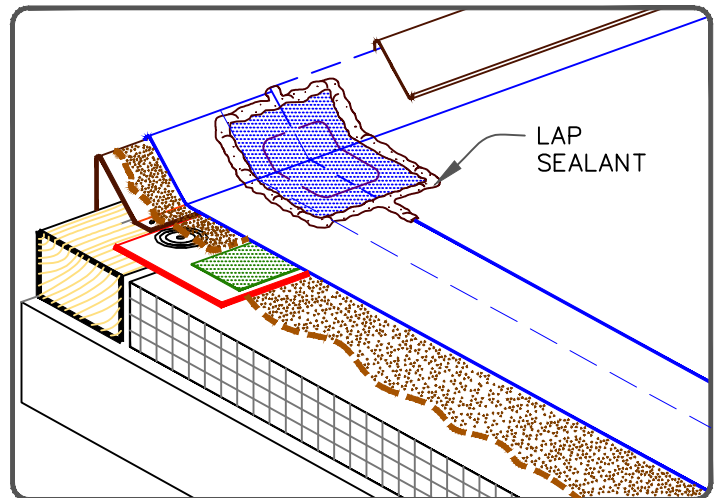
CAUTION

WHEN A WARRANTY WIND SPEED GREATER THAN 90 MPH IS SPECIFIED, CARLISLE FASTENERS AND SEAM FASTENING PLATES SHALL NOT EXCEED 6" (152mm) ON CENTER.



NOTES:

1. REFER TO [SecurEdge 200 INSTALLATION INSTRUCTION MANUAL](#) FOR STEP-BY-STEP INSTALLATION PROCEDURES.
2. WOOD NAILER MUST EXTEND PAST TOTAL WIDTH OF GRAVEL STOP DECK FLANGE.
3. APPLY EPDM PRIMER TO THE MEMBRANE SURFACE PRIOR TO INSTALLING PRESSURE-SENSITIVE ELASTOFORM FLASHING.
4. FIELD SPLICES AT THE ANGLE CHANGE SHALL BE OVERLAID WITH TWO LAYERS OF PRESSURE-SENSITIVE ELASTOFORM FLASHING. THE BOTTOM LAYER SHALL BE 6" (152mm) WIDE COVERED WITH A 12" WIDE TOP LAYER (305mm). BOTH LAYERS SHALL BE CENTERED AND SEALED WITH CONTINUOUS LAP SEALANT.
5. WHEN METAL FASCIA BY OTHERS IS USED, FASTENER TYPE AND FASTENING FREQUENCY SHALL BE RECOMMENDED BY METAL EDGE MANUFACTURER.



<p>—• EPDM          - - - BONDING ADHESIVE   APPROVED SUBSTRATE  <b>0</b> SEE NOTE(S)</p>	<p><b>CARLISLE SecurEDGE 200-PROJECTS WITH 25 AND 30-YEAR WARRANTIES</b></p> <p>For additional information, refer to Specifications</p>		<p>DETAIL NO.  <b>A-1A.1</b>                  ADHERED EPDM</p>
---	---	--	--