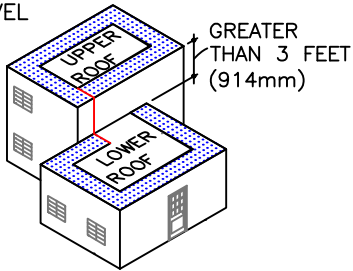


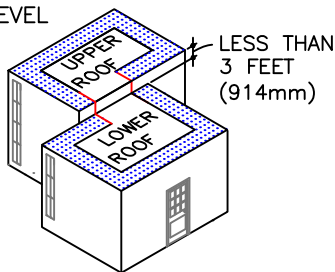
GUIDELINES FOR ROOF PERIMETER ZONES FOR MECHANICALLY ATTACHED ROOF SYSTEM

 PERIMETER ZONES

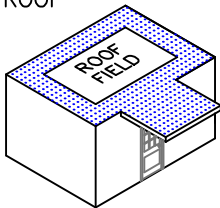
SPLIT LEVEL ROOFS



SPLIT LEVEL ROOFS

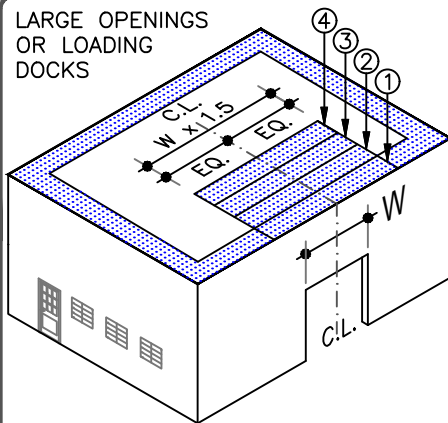


CANOPY ROOF

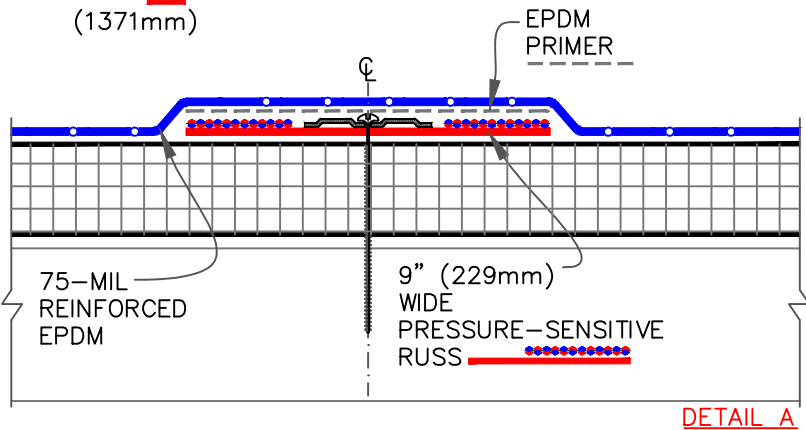
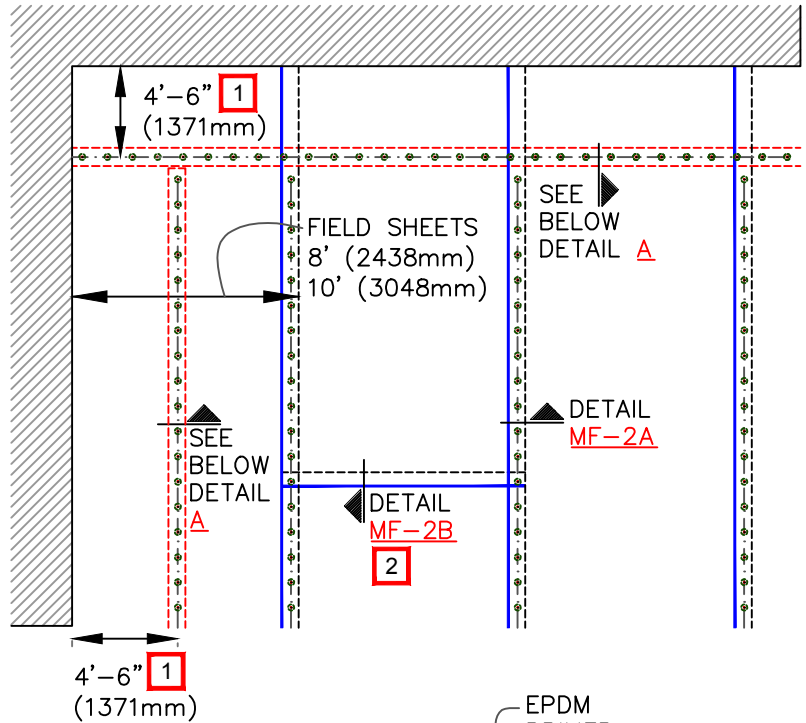


INSTALL PERIMETER SHEETS OVER THE ENTIRE OVERHANG (PROJECTION ROOF) AREA, EXTENDING ONTO THE MAIN ROOF DECK WHEN AT THE SAME LEVEL AS SHOWN.

LARGE OPENINGS OR LOADING DOCKS

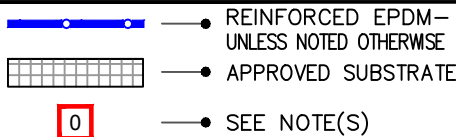


4 PERIMETER SHEETS CENTERED OVER LARGE OPENINGS



NOTES:

1. REFER TO CARLISLE SPECIFICATIONS FOR REQUIRED NUMBER OF PERIMETER SHEETS, SHEET WIDTH AND MEMBRANE FASTENING DENSITY.
2. END LAPS DO NOT REQUIRE MECHANICAL FASTENING AND SHALL BE SPLICED USING EITHER 3" (76mm) OR 6" (152mm) WIDE SecurTAPE. REFER TO DETAIL MF-2B.
3. EPDM PRIMER MUST BE APPLIED TO THE BACK SIDE OF MEMBRANE SURFACE PRIOR TO ADHERING MEMBRANE TO PRESSURE-SENSITIVE RUSS..
4. HP FASTENERS AND POLYMER SEAM PLATES ARE REQUIRED OVER STEEL DECKS.



MEMBRANE SECUREMENT WITH PRESSURE-SENSITIVE RUSS - OPTION 2 (25 / 30 YEAR WARRANTIES)

For additional information, refer to Specifications

	DETAIL NO.
	MF-2.2
MECHANICALLY FASTENED	