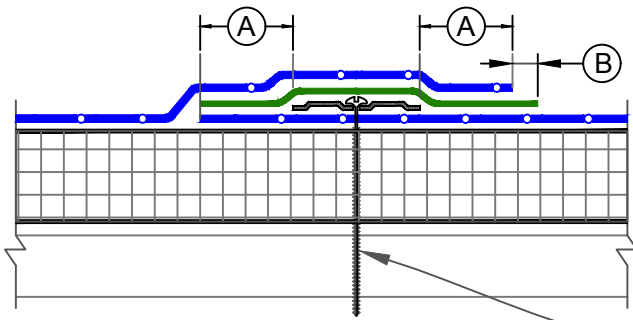
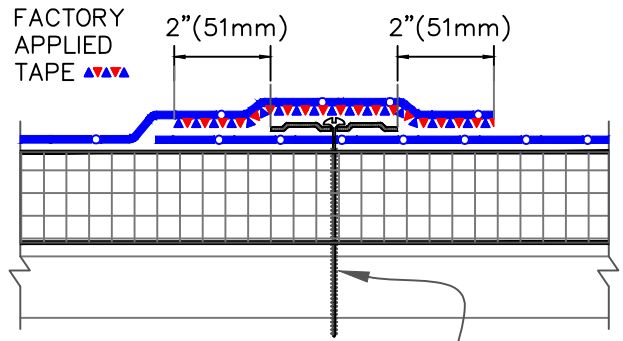


6" (152mm) WIDE SecurTAPE SPLICE

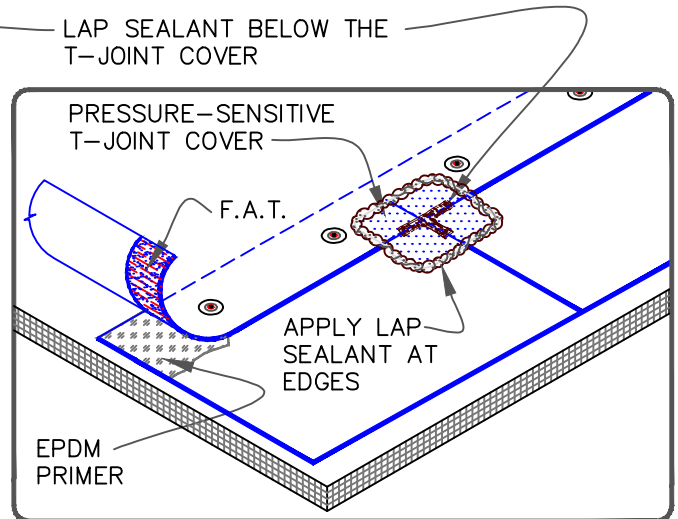
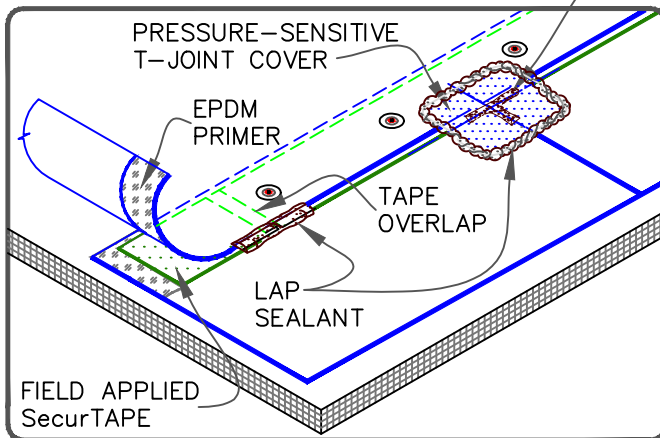


6" (152mm) WIDE FACTORY APPLIED TAPE



SEAM FASTENING PLATE & FASTENER POSITIONED OVER PRE-PRINTED BLUE MARKS. FASTEN MAX. 12" (305mm) O.C. 1

DIMENSIONS	mm	
(A)	2"	51
(B)	1/8"	3 TO
	1/2"	13



NOTES:

F.A.T. (FACTORY APPLIED SecurTAPE)

- HP FASTENERS AND POLYMER SEAM PLATES ARE REQUIRED OVER STEEL DECKS.
- PRIOR TO THE INSTALLATION OF SPLICE TAPE, APPLY EPDM PRIMER TO SPLICE AREAS.
- FIELD APPLIED SecurTAPE IS TO BE OVERLAPPED A MINIMUM OF 1" (25mm) AT THE ENDS OF EACH CUT PIECE. APPLY LAP SEALANT AT TAPE OVERLAPS 2" (51mm) IN EACH DIRECTION AS SHOWN.
- APPLY LAP SEALANT ALONG THE LEADING EDGE OF THE MEMBRANE SPLICE UNDER THE 6"X6" (152 X 152mm) T-JOINT COVER, COVERING THE EXPOSED SPLICE TAPE 1/2" (13mm) IN ALL DIRECTIONS FROM THE SPLICE INTERSECTION.
- END LAPS SHALL BE SPLICED USING EITHER 3" (76mm) OR 6" (152mm) WIDE SecurTAPE. REFER TO DETAIL [MF-2B](#).
- LAP SEALANT IS REQUIRED ON CUT EDGES OF REINFORCED EPDM MEMBRANE.

REV. 1/17

	<p>● REINFORCED EPDM—UNLESS NOTED OTHERWISE</p> <p>● APPROVED SUBSTRATE</p> <p>● SEE NOTE(S)</p>	<p>MEMBRANE SPLICE</p> <p>For additional information, refer to Specifications</p>	<p>DETAIL NO. MF-2A</p> <p>MECHANICALLY FASTENED</p>
--	--	--	---