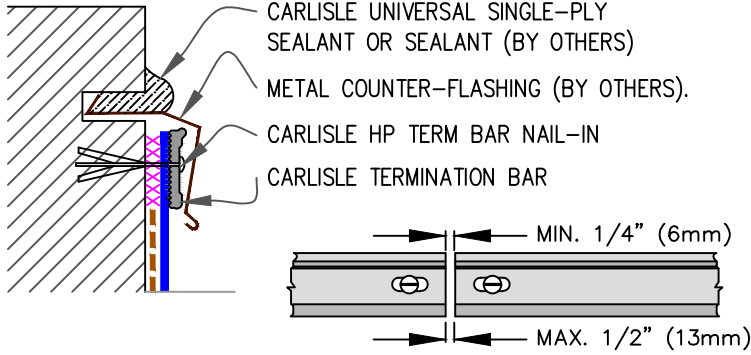


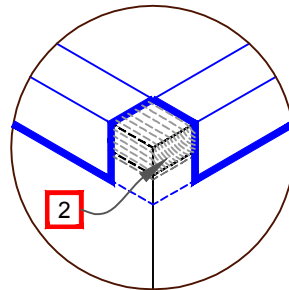
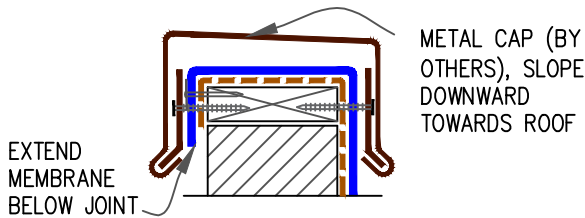
9A MECHANICAL TERMINATION WITH COUNTER FLASHING



NOTES:

1. APPLY ON HARD SMOOTH SURFACE ONLY; NOT FOR USE ON EXPOSED WOOD.
2. DO NOT WRAP TERMINATION BAR AROUND CORNERS.
3. DETAIL REQUIRED FOR USE ON WARRANTY PROJECTS EXCEEDING 20-YEARS. MAY BE USED FOR ANY PROJECT REGARDLESS OF WARRANTY.

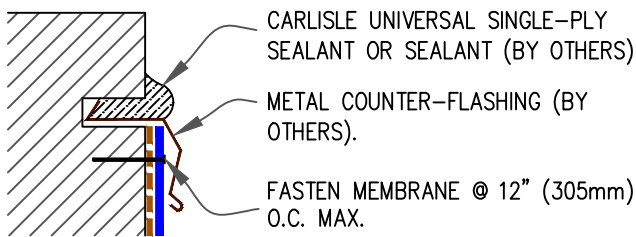
9B SHEET METAL COPING (BY OTHERS)



NOTES:

1. FOR CARLISLE SecurEdge COPING, REFER TO INSTALLATION INSTRUCTIONS PUBLISHED SEPARATELY.
2. MEMBRANE MUST BE EXTENDED TO CORNERS TO PROVIDE COMPLETE COVERAGE OF THE TOP WALL SURFACE.

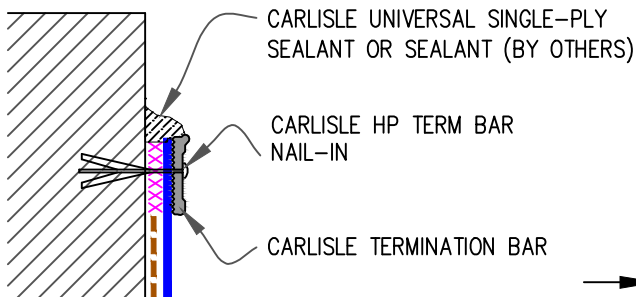
9C COUNTER FLASHING TERMINATION



NOTES:

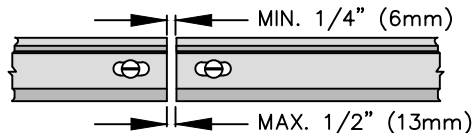
1. WHEN MECHANICAL FASTENERS ARE USED TO PENETRATE THE METAL COUNTER-FLASHING, USE EPDM WASHERS, APPLY WATER CUT-OFF MASTIC UNDER THE COUNTER-FLASHING OR CAULK THE FASTENER HEADS.
2. DETAIL NOT FOR USE ON WARRANTY PROJECTS EXCEEDING 10-YEARS.

9D MECHANICAL TERMINATION



NOTES:

1. APPLY ON HARD SMOOTH SURFACE ONLY; NOT FOR USE ON EXPOSED WOOD.
2. DO NOT WRAP COMPRESSION TERMINATION BAR AROUND CORNERS.
3. DETAIL NOT FOR USE ON WARRANTY PROJECTS EXCEEDING 20-YEARS.



--- APPLICABLE BONDING ADHESIVE

xxx WATER CUT-OFF MASTIC- MUST BE HELD UNDER CONSTANT COMPRESSION.

<p>● EPDM</p> <p>● APPROVED SUBSTRATE</p> <p>0 ● SEE NOTE(S)</p>	<p>MEMBRANE TERMINATIONS</p> <p>PAGE 1 OF 2</p> <p>For additional information, refer to Specifications</p>		<p>DETAIL NO.</p> <p>U-9</p> <p>THERMOSET UNIVERSAL</p>
--	--	--	--