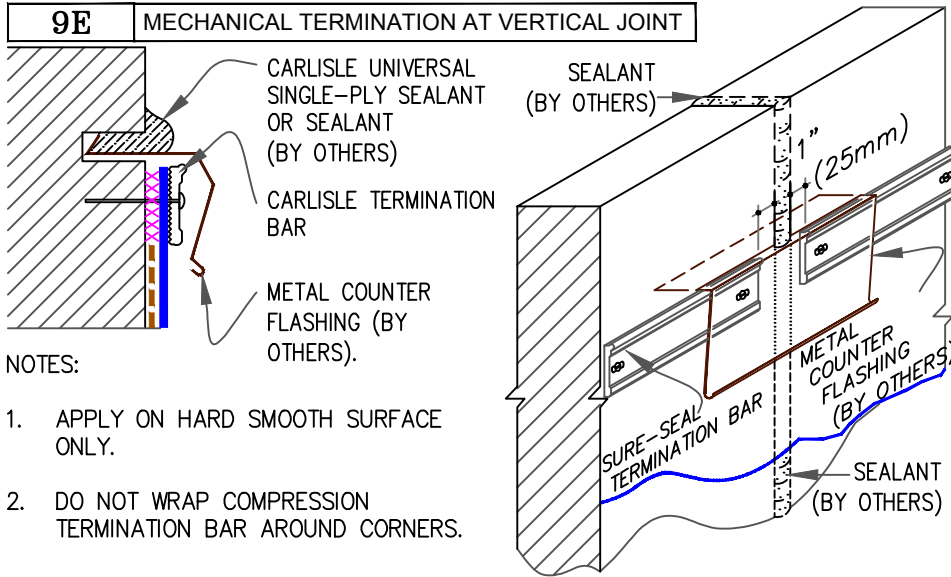


9E MECHANICAL TERMINATION AT VERTICAL JOINT

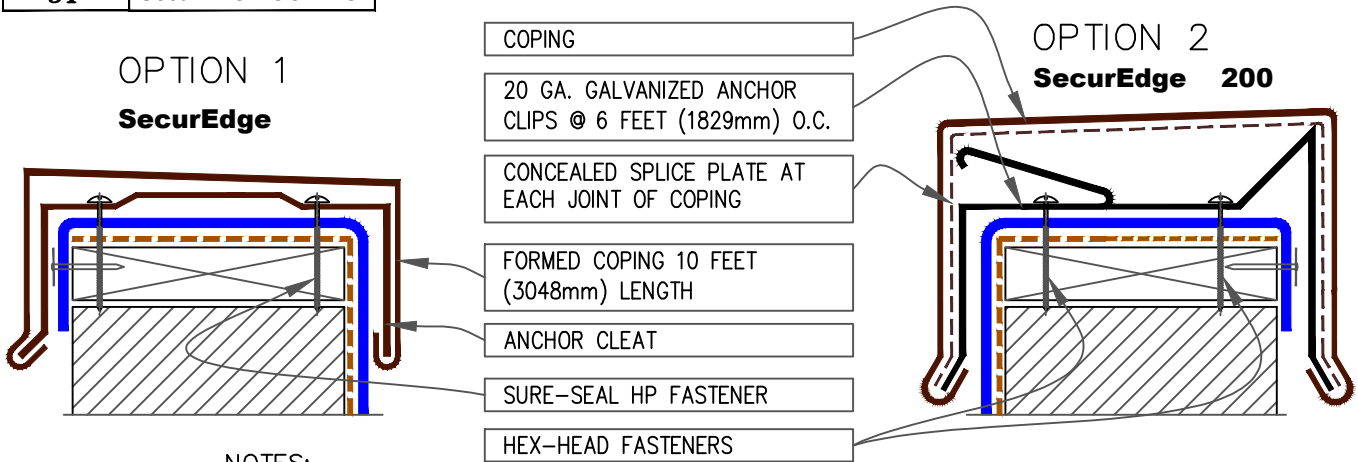


NOTES:

1. APPLY ON HARD SMOOTH SURFACE ONLY.
2. DO NOT WRAP COMPRESSION TERMINATION BAR AROUND CORNERS.

3. VERTICAL JOINTS IN THE PRE-CAST PANEL AS WELL AS ALL GAPS AT THE JUNCTION OF THE TILT-UP PANEL AND ROOF DECK MUST BE FULLY SEALED TO PREVENT AIR INFILTRATION.
4. CONTINUOUS COUNTER FLASHING REQUIRED FOR WARRANTY PROJECTS EXCEEDING 20-YEARS.
5. DETAIL REQUIRED FOR USE ON WARRANTY PROJECTS EXCEEDING 20-YEARS. THIS DETAIL MAY BE USED FOR ANY PROJECT REGARDLESS OF WARRANTY.

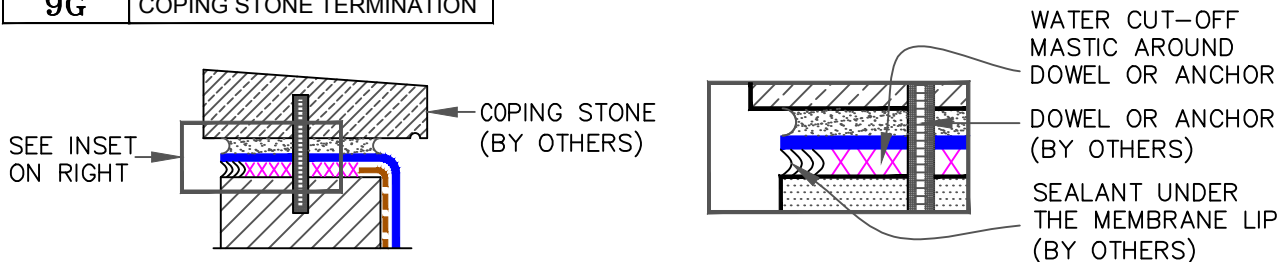
9F SecurEDGE COPING



NOTES:

1. MEMBRANE MUST BE EXTENDED AT CORNERS TO PROVIDE COMPLETE COVERAGE OF THE TOP WALL SURFACE. REFER TO [DETAIL U-9B](#).
2. REFER TO [SecurEDGE COPING INSTALLATION INSTRUCTION](#) MANUAL FOR STEP-BY-STEP INSTRUCTION PROCEDURES.

9G COPING STONE TERMINATION



--- APPLICABLE BONDING ADHESIVE

xxx WATER CUT-OFF MASTIC- MUST BE HELD UNDER CONSTANT COMPRESSION.

<p>—• EPDM</p> <p>—• APPROVED SUBSTRATE</p> <p>0 —• SEE NOTE(S)</p>	<p>MEMBRANE TERMINATIONS</p> <p>PAGE 2 OF 2</p> <p>For additional information, refer to Specifications</p>		<p>DETAIL NO.</p> <p>U-9</p> <p>THERMOSET UNIVERSAL</p>
---	--	--	--