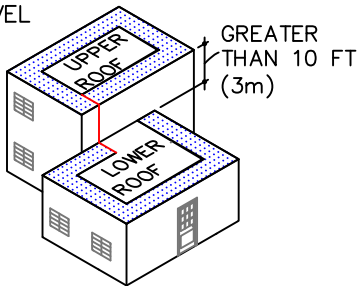


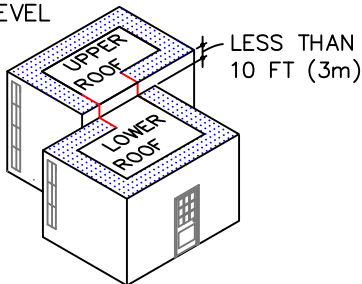
GUIDELINES FOR ROOF PERIMETER ZONES FOR MECHANICALLY ATTACHED ROOF SYSTEM

PERIMETER ZONES

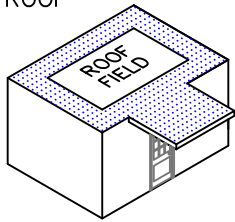
SPLIT LEVEL ROOFS



SPLIT LEVEL ROOFS

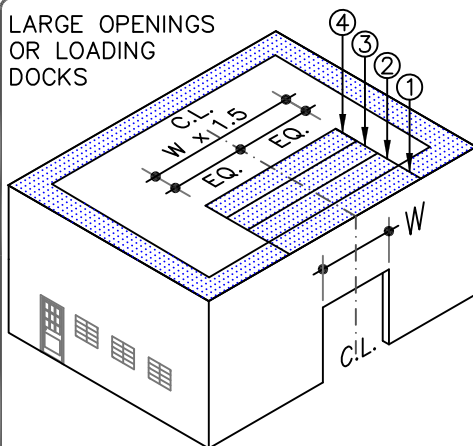


CANOPY ROOF

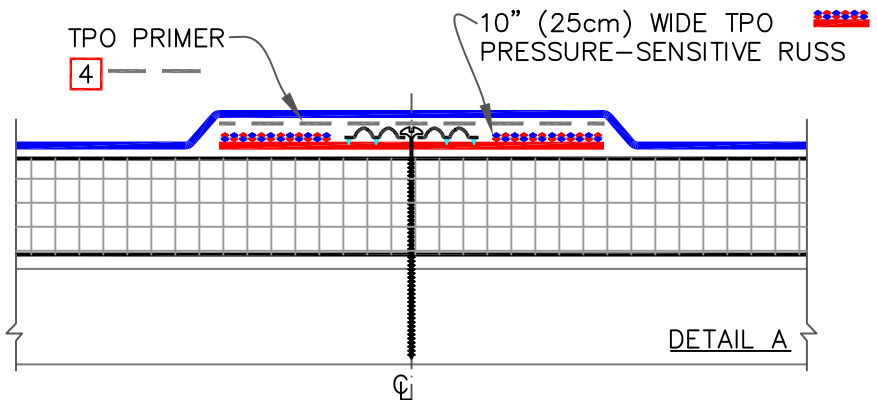
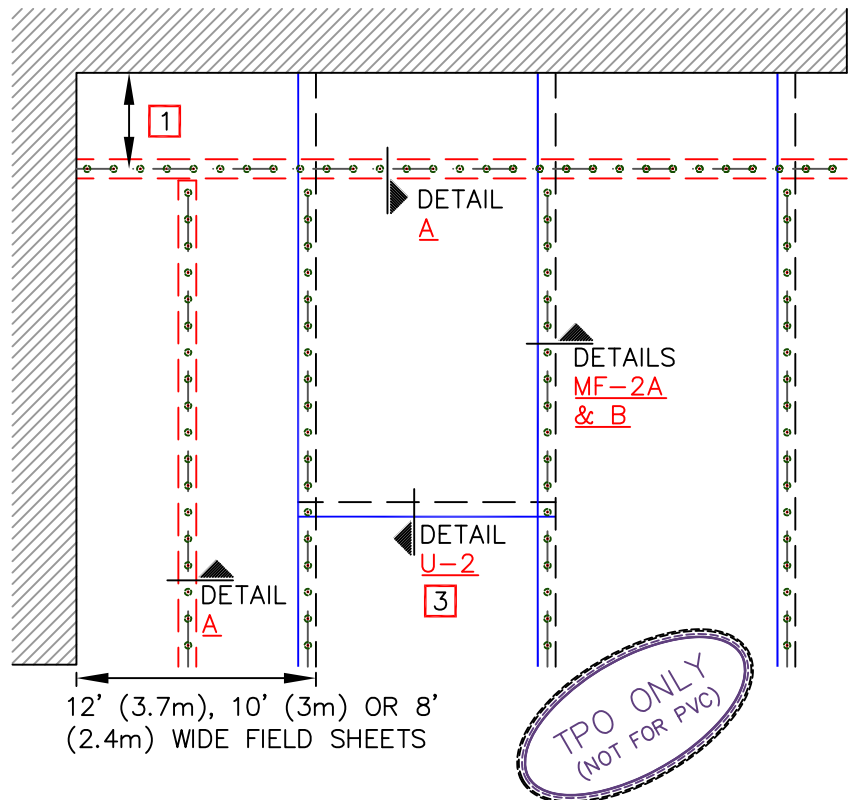


INSTALL PERIMETER SHEETS OVER THE ENTIRE OVERHANG (PROJECTION ROOF) AREA, EXTENDING ONTO THE MAIN ROOF DECK WHEN AT THE SAME LEVEL AS SHOWN.

LARGE OPENINGS OR LOADING DOCKS



4 PERIMETER SHEETS CENTERED OVER LARGE OPENINGS



NOTES:

1. PRESSURE-SENSITIVE RUSS SHALL BE POSITIONED 5' (1.5m) TO 6' (1.8m) FROM THE PERIMETER EDGE WHEN USING 10' (3m) OR 12' (3.7m) WIDE TPO FIELD SHEETS. WHEN USING 8' (2.4m) WIDE TPO FIELD SHEETS, PRESSURE-SENSITIVE RUSS SHALL BE POSITIONED 4' (1.2m) FROM THE PERIMETER EDGE.
2. REFER TO CARLISLE SPECIFICATIONS FOR REQUIRED NUMBER OF PERIMETER SHEETS, SHEET WIDTH AND MEMBRANE FASTENING DENSITY.
3. END LAPS DO NOT REQUIRE MECHANICAL FASTENING AND SHALL BE OVERLAPPED 2" (5cm) MINIMUM. REFER TO THERMOPLASTIC DETAIL U-2.
4. TPO PRIMER MUST BE APPLIED TO THE BACK SIDE OF MEMBRANE SURFACE PRIOR TO ADHERING MEMBRANE TO PRESSURE-SENSITIVE RUSS.



TPO MEMBRANE SECUREMENT WITH PRESSURE-SENSITIVE RUSS

MAXIMUM WARRANTY: 30 YEARS



DETAIL NO.

MF-2.1

THERMOPLASTIC TPO