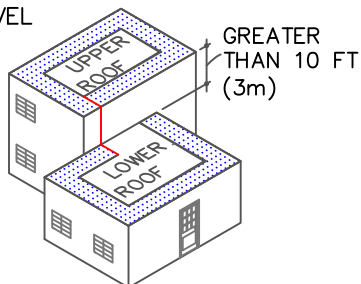


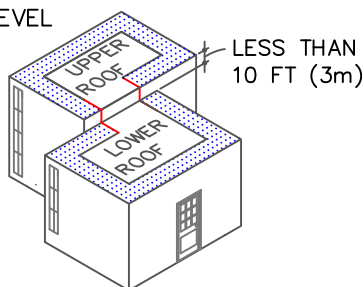
GUIDELINES FOR ROOF PERIMETER ZONES FOR MECHANICALLY ATTACHED ROOF SYSTEM

 PERIMETER ZONES

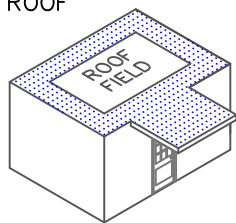
SPLIT LEVEL ROOFS



SPLIT LEVEL ROOFS

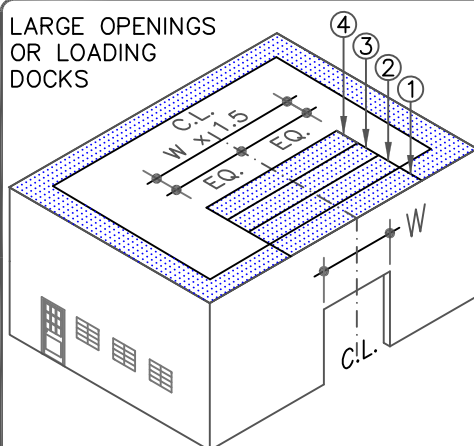


CANOPY ROOF

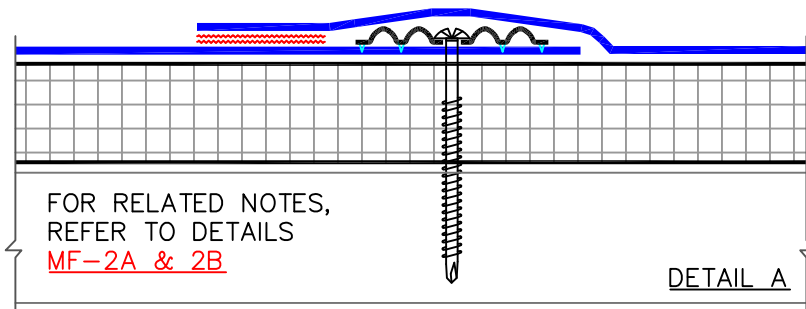
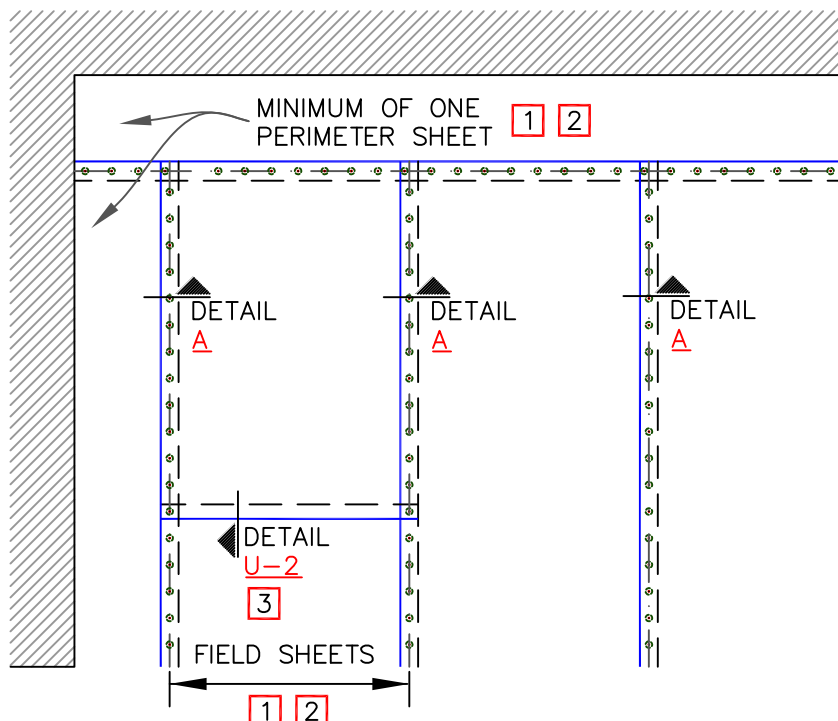


INSTALL PERIMETER SHEETS OVER THE ENTIRE OVERHANG (PROJECTION ROOF) AREA, EXTENDING ONTO THE MAIN ROOF DECK WHEN AT THE SAME LEVEL AS SHOWN.

LARGE OPENINGS OR LOADING DOCKS



4 PERIMETER SHEETS CENTERED OVER LARGE OPENINGS



NOTES:

1. WHEN USING 10' (3m) OR 12' (3.7m) WIDE TPO FIELD SHEETS, 6' (1.8m) WIDE PERIMETER SHEETS ARE UTILIZED. WHEN USING 8' (2.4m) WIDE TPO FIELD SHEETS, 4' (1.2m) WIDE PERIMETER SHEETS ARE USED. WHEN USING 10' (3m) WIDE PVC FIELD SHEETS, 5' (1.5m) WIDE PERIMETER SHEETS ARE UTILIZED. WHEN USING 81" (2.1m) WIDE PVC FIELD SHEETS, 40.5" (1m) WIDE PERIMETER SHEETS ARE USED.
2. REFER TO CARLISLE SPECIFICATIONS FOR REQUIRED NUMBER OF PERIMETER SHEETS, SHEET WIDTH AND MEMBRANE FASTENING DENSITY.
3. END LAPS DO NOT REQUIRE MECHANICAL FASTENING AND SHALL BE OVERLAPPED 2" (5cm) MINIMUM. REFER TO THERMOPLASTIC [DETAIL U-2](#).



MEMBRANE SECUREMENT

MAXIMUM WARRANTY: 30 YEARS



DETAIL NO.

MF-2

THERMOPLASTIC UNIVERSAL