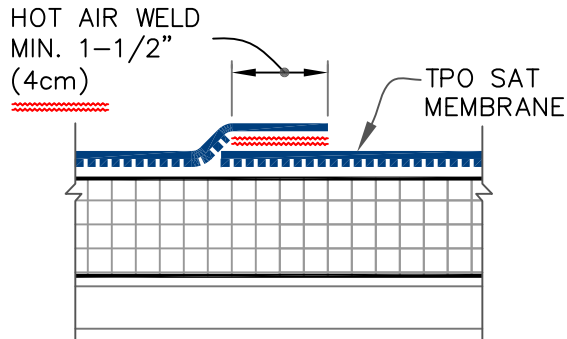
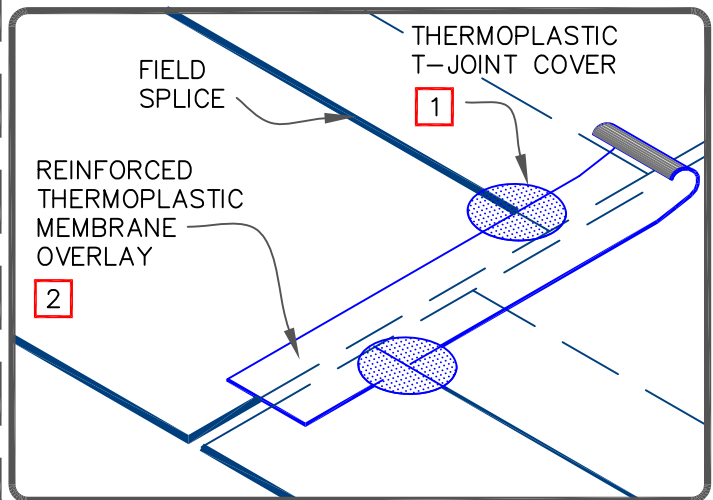
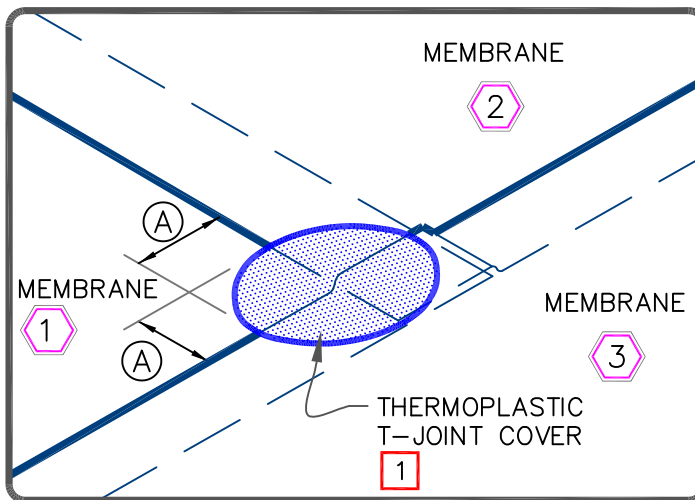
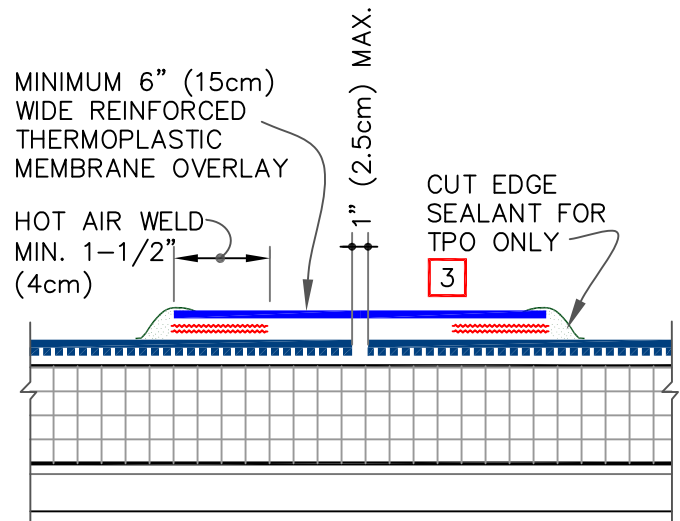


MEMBRANE SPLICE



END LAP SPLICE



DIMENSION	cm
(A) 2-1/4"	6

NOTES:

1. WHEN USING 60 OR 80 MIL TPO SAT MEMBRANE, APPLY A 4-1/2" (11cm) DIAMETER THERMOPLASTIC "T-JOINT" COVER AT ALL FIELD SPLICE INTERSECTIONS.
2. WHEN USING 60 OR 80 MIL THERMOPLASTIC REINFORCED MEMBRANE OVERLAY, INTERSECTIONS BETWEEN SPLICES MUST BE OVERLAID WITH A 4-1/2" (11cm) DIAMETER THERMOPLASTIC "T-JOINT" COVER.
3. APPROXIMATELY 1/8" (0.5cm) DIAMETER BEAD OF CUT-EDGE SEALANT IS REQUIRED ON CUT EDGES OF REINFORCED TPO MEMBRANE.
4. WHEN USING 60-MIL TPO, MAXIMUM WARRANTY IS 20 YEARS



THERMOPLASTIC MEMBRANE SPLICES

MAXIMUM WARRANTY: 30 YEARS



DETAIL NO.

U-2B

THERMOPLASTIC TPO