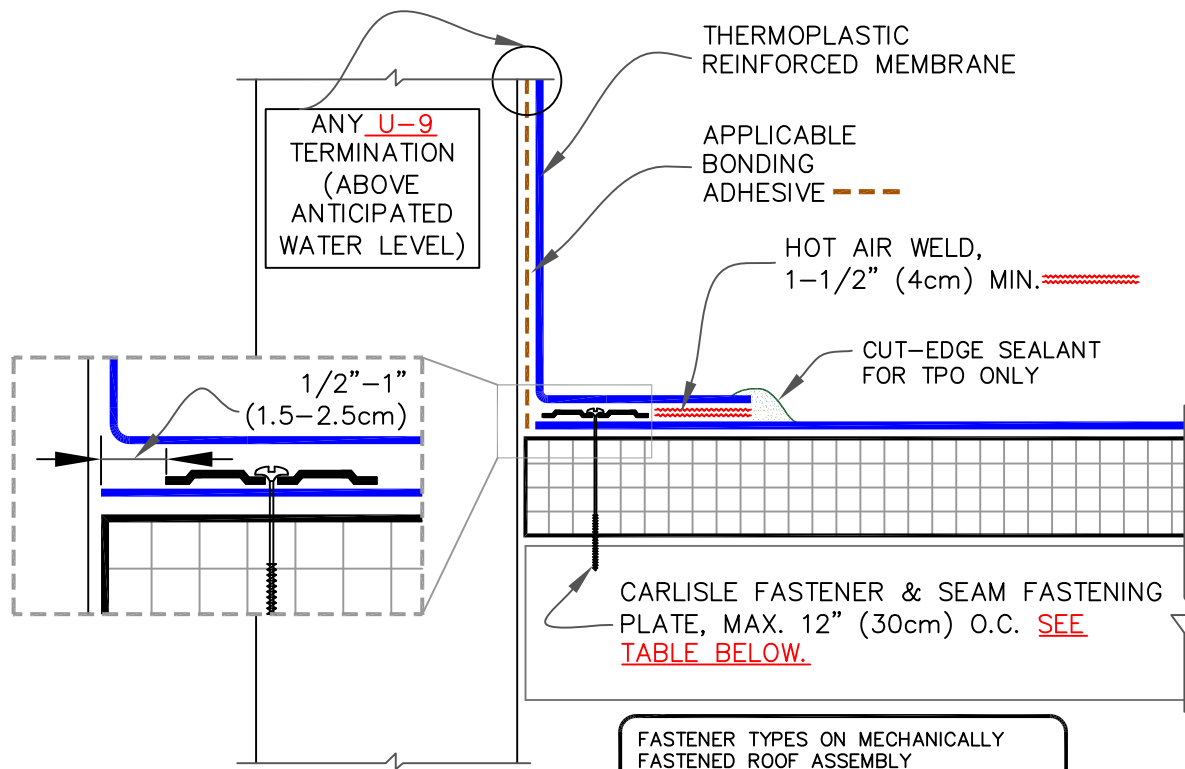


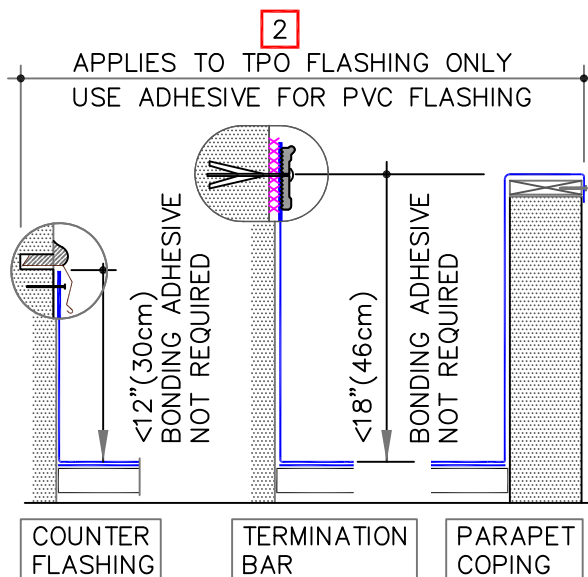
CAUTION

FASTENERS AND PLATES ARE REQUIRED AT 6" (15cm) O.C. FOR ADHERED SYSTEMS WITH WARRANTY WIND SPEED COVERAGE GREATER THAN 90 MPH AND FOR ALL PROJECTS WITH WARRANTIES GREATER THAN 20 YEARS.



FASTENER TYPES ON MECHANICALLY FASTENED ROOF ASSEMBLY

DECK TYPE	FASTENERS	PLATES
STEEL & WOOD DECK	HP-X	PIRANHA
	OR	
	HP-XTRA	PIRANHA XTRA
CONCRETE DECK	CD-10 OR HD 14-10	PIRANHA



## NOTES:

1. IN CASES WHERE FASTENERS MUST BE FASTENED INTO THE VERTICAL SURFACE, CARE MUST BE TAKEN TO PRESS THE MEMBRANE TIGHTLY INTO THE ANGLE CHANGE. PLACING THE PLATES TIGHT INTO THE ANGLE CHANGE WILL HELP HOLD THE MEMBRANE IN THE PROPER POSITION.
2. FOLLOW U-9 DETAILS FOR WARRANTY DURATION.



PARAPET FLASHING – FASTENED INTO DECK

MAXIMUM WARRANTY: 30 YEARS



DETAIL NO.

U-12A

THERMOPLASTIC UNIVERSAL