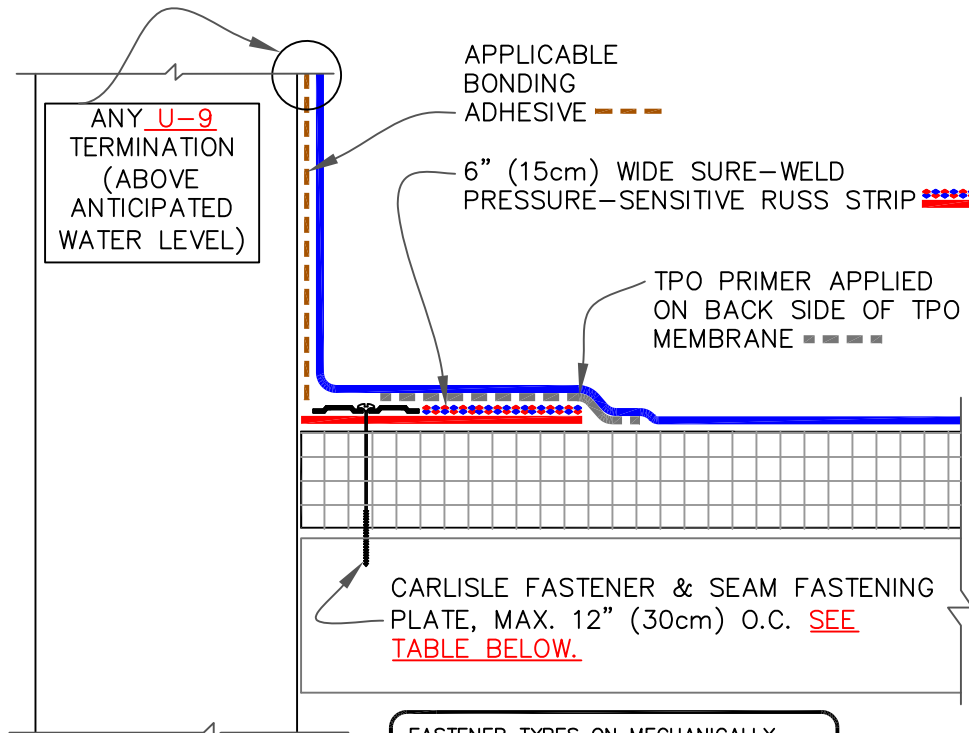


CAUTION

FASTENERS AND PLATES ARE REQUIRED AT 6" (15cm) O.C. FOR ADHERED SYSTEMS WITH WARRANTY WIND SPEED COVERAGE GREATER THAN 90 MPH AND FOR ALL PROJECTS WITH WARRANTIES GREATER THAN 20 YEARS.

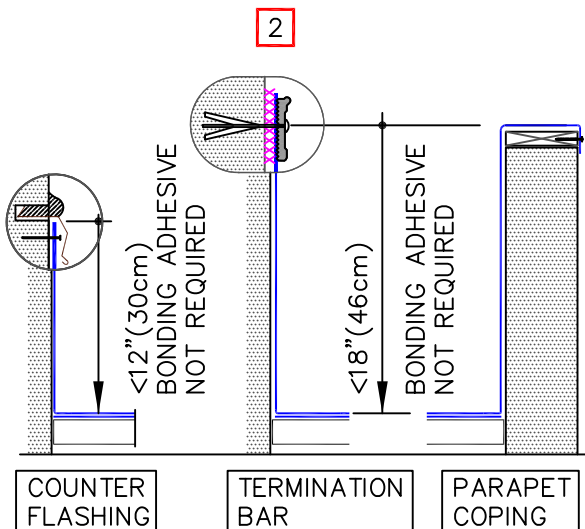


TPO ONLY  
(NOT FOR PVC)

FASTENER TYPES ON MECHANICALLY FASTENED ROOF ASSEMBLY		
DECK TYPE	FASTENERS	PLATES
STEEL & WOOD DECK	HP-X	PIRANHA
	OR	
	HP-XTRA	PIRANHA XTRA
CONCRETE DECK	CD-10 OR HD 14-10	PIRANHA

## NOTES:

1. IN A CASE WHERE FASTENERS MUST BE FASTENED INTO THE VERTICAL SURFACE, CARE MUST BE TAKEN TO PRESS THE RUSS, AS WELL AS THE MEMBRANE, TIGHTLY INTO THE ANGLE CHANGE TO MAXIMIZE CONTACT BETWEEN THE TAPE AND MEMBRANE. MEMBRANE MUST BE ADHERED TO THE FULL WIDTH OF THE TAPE. PLACING THE PLATES TIGHT INTO THE ANGLE CHANGE WILL HELP HOLD THE RUSS IN THE PROPER POSITION.
2. FOLLOW U-9 DETAILS FOR WARRANTY DURATION.



**CARLISLE**  
SYNTEC SYSTEMS

PARAPET FLASHING WITH  
PRESSURE-SENSITIVE  
RUSS, PAGE 1 OF 2  
MAXIMUM WARRANTY: 30 YEARS



DETAIL NO.

U-12B

THERMOPLASTIC TPO