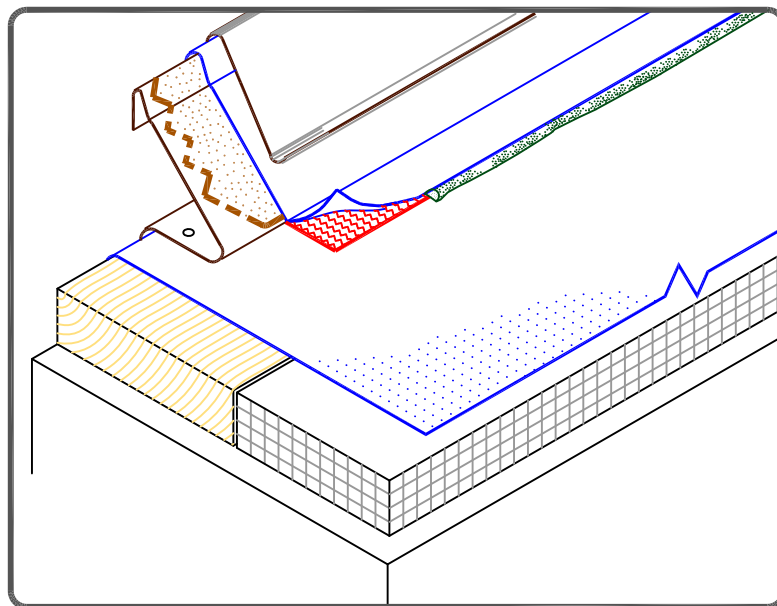


NOTES:

1. REFER TO [SecurEdge 300 INSTRUCTION MANUAL](#) FOR STEP-BY-STEP INSTALLATION PROCEDURES.
2. WOOD NAILER MUST EXTEND PAST TOTAL WIDTH OF SecurEdge DECK FLANGE.
3. APPROXIMATELY 1/8" (0.5cm) DIAMETER BEAD OF CUT-EDGE SEALANT IS REQUIRED ON CUT EDGES OF REINFORCED TPO MEMBRANE.
4. WHEN METAL FASCIA BY OTHERS IS USED, FASTENER TYPE AND FASTENING FREQUENCY SHALL BE RECOMMENDED BY METAL EDGE MANUFACTURER.



CARLISLE SecurEdge 300

MAXIMUM WARRANTY: 30 YEARS



DETAIL NO.

U-1E

THERMOPLASTIC UNIVERSAL