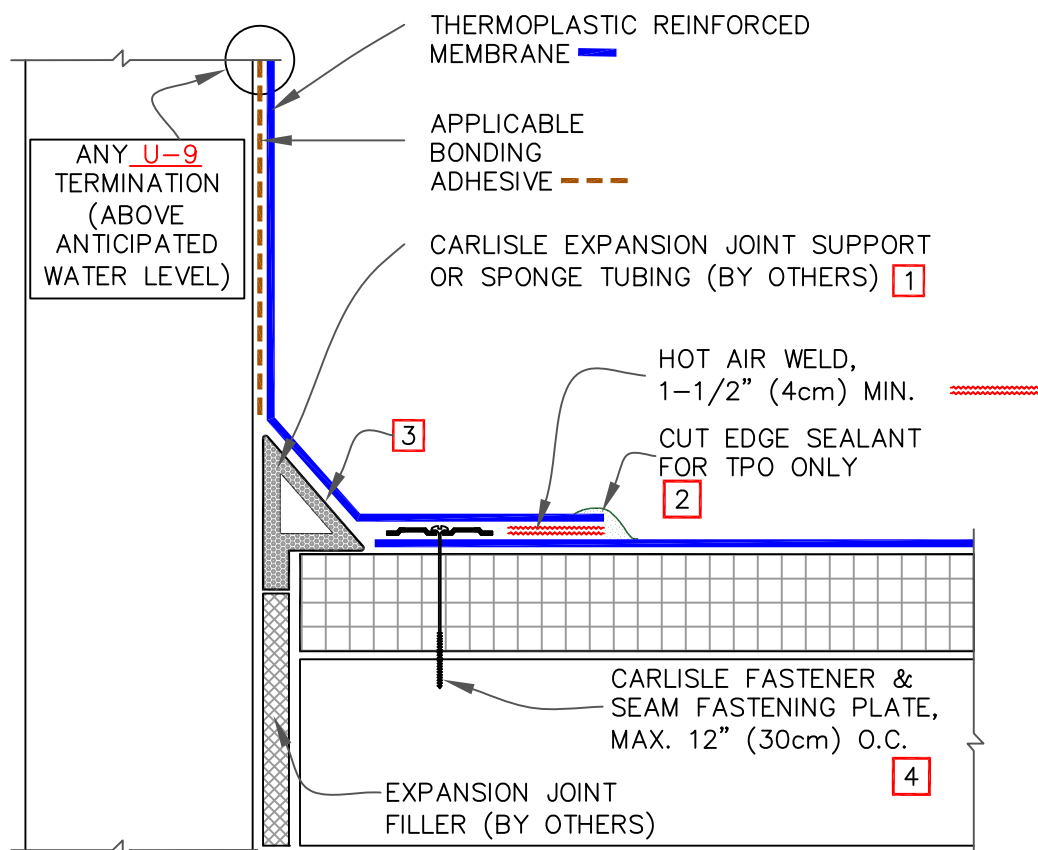


CAUTION

WHEN A WARRANTY WIND SPEED GREATER THAN 90MPH IS SPECIFIED, CARLISLE FASTENERS AND SEAM FASTENING PLATES SHALL NOT EXCEED 6" (15cm) ON CENTER FOR ADHERED MEMBRANE ASSEMBLIES.



## NOTES:

1. WHEN CARLISLE EXPANSION JOINT SUPPORT IS USED, WIDTH OF JOINT SHALL BE A MINIMUM OF 3/4" (2cm) AND SHALL NOT EXCEED 2" (5cm).
2. APPROXIMATELY 1/8" (0.5cm) DIAMETER BEAD OF CUT-EDGE SEALANT IS REQUIRED ON CUT EDGES OF REINFORCED TPO MEMBRANE.
3. MEMBRANE FLASHING SHALL NOT BE ADHERED OVER THE EXPANSION JOINT SUPPORT OR SPONGE TUBING.
4. ON MECHANICALLY FASTENED SYSTEMS, HP-X FASTENERS AND PIRANHA PLATES OR HP-XTRA FASTENERS AND PIRANHA XTRA PLATES ARE REQUIRED OVER STEEL AND WOOD DECKS. ON CONCRETE DECKS, CD-10 OR HD 14-10 FASTENERS ARE USED WITH PIRANHA PLATES.



DECK-TO-WALL EXPANSION DETAIL

MAXIMUM WARRANTY: 30 YEARS



DETAIL NO.

U-3B

THERMOPLASTIC UNIVERSAL