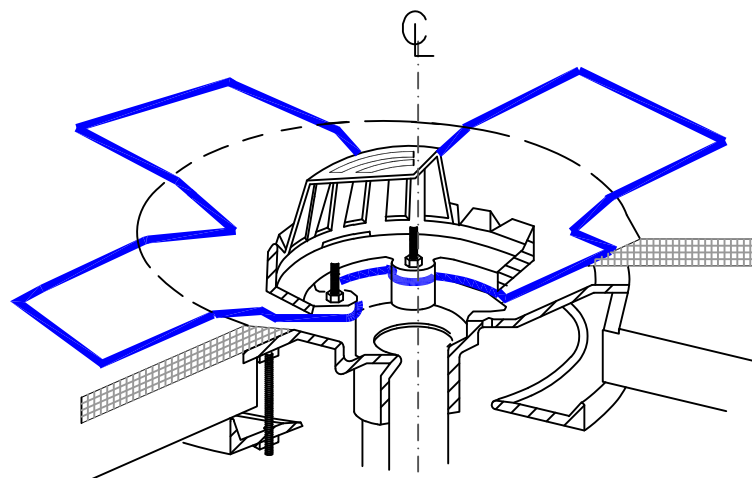
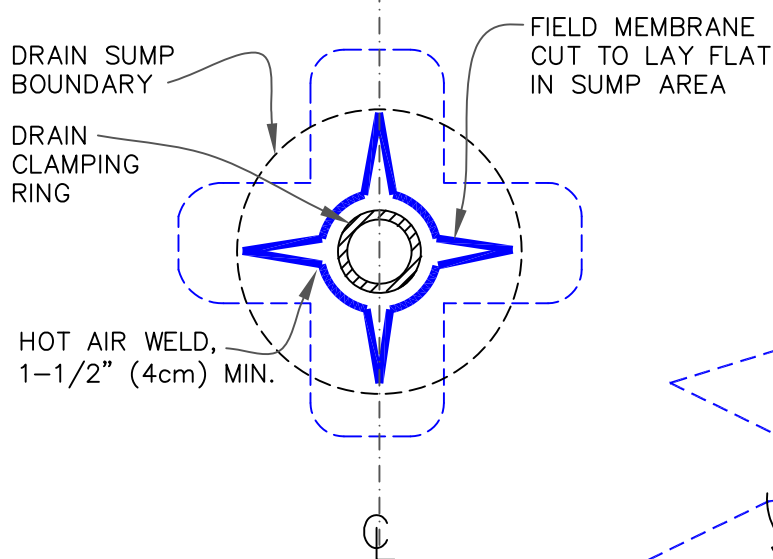


CUT SECTION OF THERMOPLASTIC REINFORCED MEMBRANE AS SHOWN AND POSITION INTO DRAIN SUMP. EXTEND MEMBRANE OUT OF DRAIN SUMP APPROXIMATELY 6" (15cm) (ROUND CORNERS).



EXTEND THERMOPLASTIC MEMBRANE ONTO MEMBRANE SECTION POSITIONED AT DRAIN SUMP AND CUT AS SHOWN TO LAY FLAT IN SUMP. HOT AIR WELD A MINIMUM OF 1-1/2" (4cm) COMPLETELY SURROUNDING AREA.

DIMENSIONS		cm	
(A)	12"	30	MIN.
(B)	6"	15	MIN.
(C)	6"	15	APPROX.
(D)	3"	7.5	MIN.

