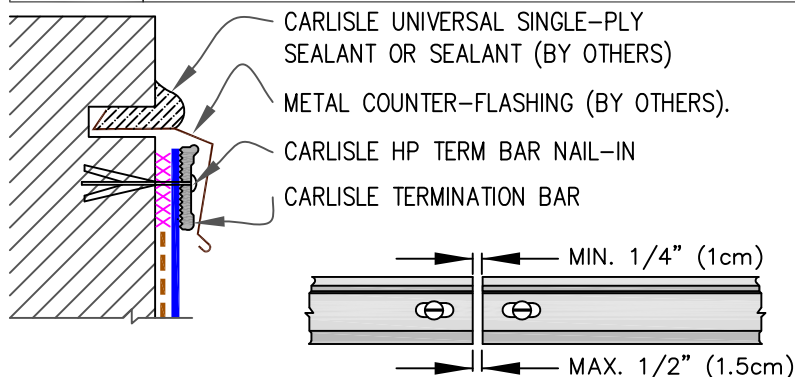


9A

MECHANICAL TERMINATION WITH COUNTER FLASHING

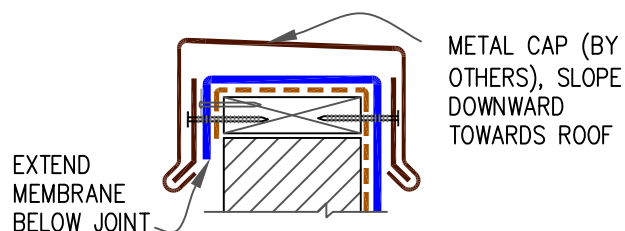


NOTES:

1. APPLY ON HARD SMOOTH SURFACE ONLY; NOT FOR USE ON EXPOSED WOOD.
2. DO NOT WRAP TERMINATION BAR AROUND CORNERS.
3. DETAIL REQUIRED FOR USE ON WARRANTY PROJECTS EXCEEDING 20-YEARS.
4. DETAIL **9E** MUST BE USED AT VERTICAL JOINTS IN PANEL WALLS.

9B

SHEET METAL COPING (BY OTHERS)

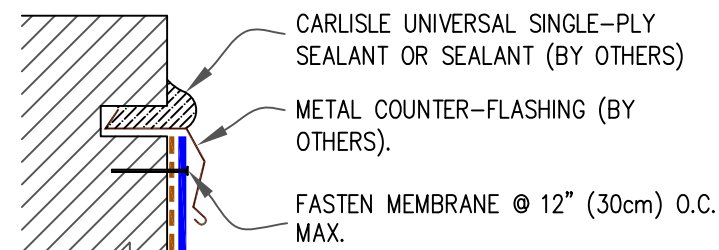


NOTES:

1. FOR CARLISLE SecurEdge COPING, REFER TO INSTALLATION INSTRUCTIONS PUBLISHED SEPARATELY.
2. MEMBRANE MUST BE EXTENDED TO CORNERS TO PROVIDE COMPLETE COVERAGE OF THE TOP WALL SURFACE.

9C

COUNTER FLASHING TERMINATION

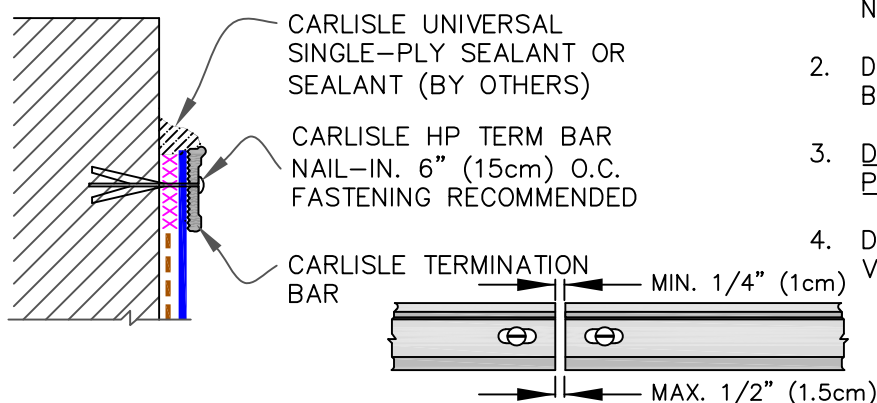


NOTES:

1. WHEN MECHANICAL FASTENERS ARE USED TO PENETRATE THE METAL COUNTER-FLASHING, USE EPDM WASHERS, APPLY WATER CUT-OFF MASTIC UNDER THE COUNTER-FLASHING OR CAULK THE FASTENER HEADS.
2. DETAIL NOT FOR USE ON WARRANTY PROJECTS EXCEEDING 10-YEARS.

9D

MECHANICAL TERMINATION



NOTES:

1. APPLY ON HARD SMOOTH SURFACE ONLY; NOT FOR USE ON EXPOSED WOOD.
2. DO NOT WRAP COMPRESSION TERMINATION BAR AROUND CORNERS.
3. DETAIL NOT FOR USE ON WARRANTY PROJECTS EXCEEDING 20-YEARS.
4. DETAIL **9E** MUST BE USED AT VERTICAL JOINTS IN PANEL WALLS.

--- APPLICABLE BONDING ADHESIVE.

xxx WATER CUT-OFF MASTIC- MUST BE HELD UNDER CONSTANT COMPRESSION.

MEMBRANE TERMINATIONS
PAGE 1 OF 2

MAXIMUM WARRANTY: 30 YEARS

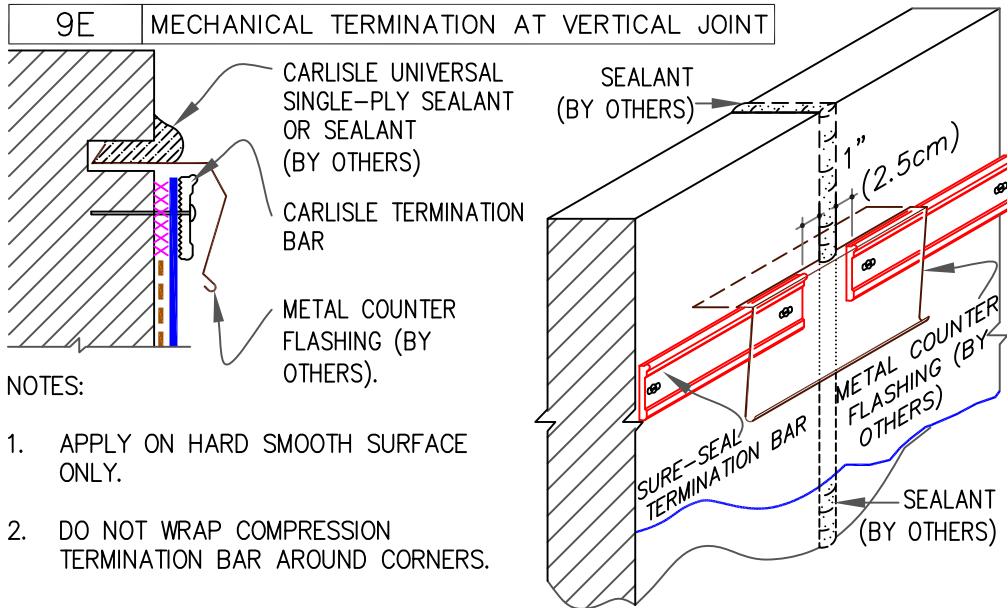


DETAIL NO.

U-9

THERMOPLASTIC UNIVERSAL

9E MECHANICAL TERMINATION AT VERTICAL JOINT

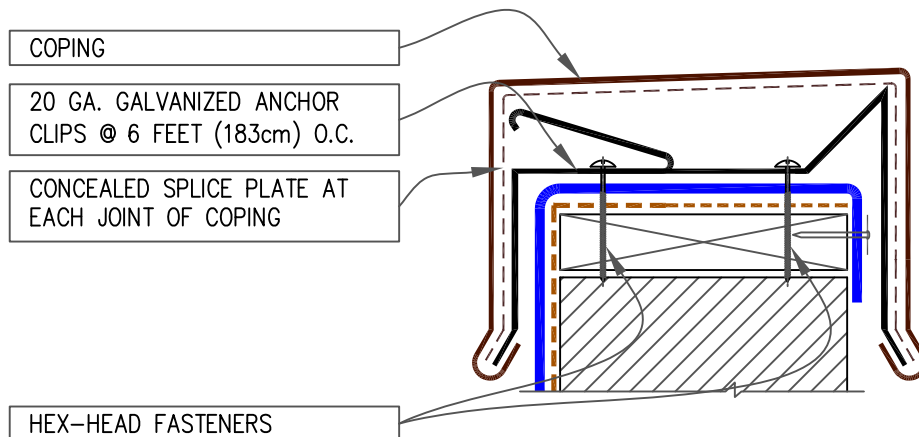


NOTES:

1. APPLY ON HARD SMOOTH SURFACE ONLY.
2. DO NOT WRAP COMPRESSION TERMINATION BAR AROUND CORNERS.

3. VERTICAL JOINTS IN THE PRE-CAST PANEL AS WELL AS ALL GAPS AT THE JUNCTION OF THE TILT-UP PANEL AND ROOF DECK MUST BE FULLY SEALED TO PREVENT AIR INFILTRATION.
4. CONTINUOUS COUNTER FLASHING REQUIRED FOR WARRANTY PROJECTS EXCEEDING 20-YEARS.
5. THIS DETAIL MUST BE USED FOR ANY PROJECT REGARDLESS OF WARRANTY

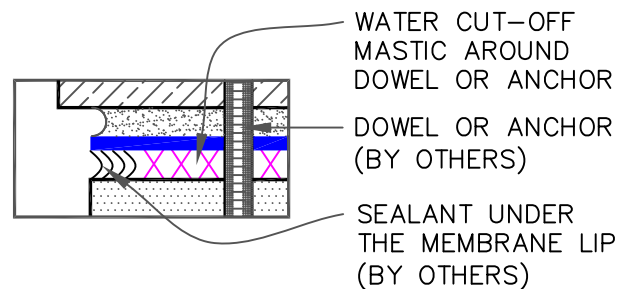
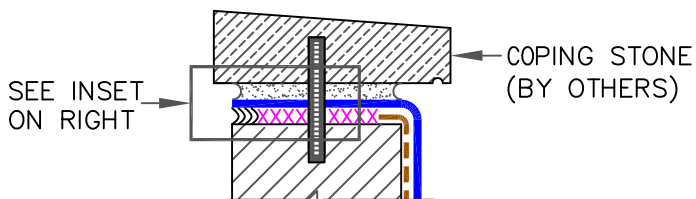
9F SecurEdge 200 & 300 COPING



NOTES:

1. MEMBRANE MUST BE EXTENDED AT CORNERS TO PROVIDE COMPLETE COVERAGE OF THE TOP WALL SURFACE. REFER TO [DETAIL U-9B](#).
2. REFER TO [SecurEdge COPING INSTALLATION INSTRUCTION](#) MANUAL FOR STEP-BY-STEP INSTRUCTION PROCEDURES.

9G COPING STONE TERMINATION



--- APPLICABLE BONDING ADHESIVE.

xxx WATER CUT-OFF MASTIC- MUST BE HELD UNDER CONSTANT COMPRESSION.



MEMBRANE TERMINATIONS
PAGE 2 OF 2

MAXIMUM WARRANTY: 30 YEARS



DETAIL NO.

U-9

THERMOPLASTIC UNIVERSAL