

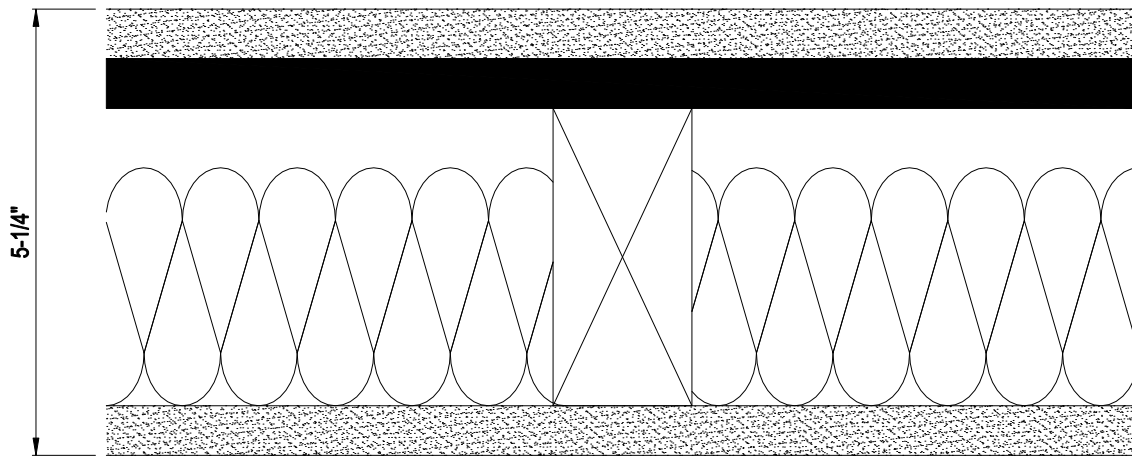


CONTINENTAL BUILDING PRODUCTS  
 12950 WORLDGATE DRIVE, SUITE 700  
 HERNDON, VA, 20170  
 TOLL FREE: 1-800-237-5505  
 www.continental-bp.com

WOOD STUD WALL SYSTEMS  
 WALL PARTITIONS - LOAD-BEARING

1 HOUR FIRE RATING

ONE LAYER 5/8" CONTINENTAL FIRECHECK TYPE X APPLIED VERT. EACH SIDE OF 2x4 WOOD STUDS 16" O.C. ONE SIDE APPLIED DIRECTLY WITH 1-7/8" NAILS 7" O.C. OTHER SIDE APPLIED VERT. TO R/C 24" O.C. WITH 1" SCREWS 12" O.C. JOINTS BETWEEN STUDS. 3" MINERAL WOOL BATT IN CAVITY.



FIRE RATING LISTING

SOUND RATING STC (ESTIMATED)

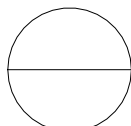
UL U305

45

**NOTES:**

1. INSTALLATION TO BE COMPLETED IN ACCORDANCE WITH MANUFACTURER'S SPECIFICATIONS.
2. DO NOT SCALE DRAWINGS.
3. IN PLACE OF 5/8" FIRECHECK TYPE X ANY OF THE FOLLOWING MAY BE USED: 5/8" FIRECHECK SOFFITBOARD TYPE X, 5/8" RAPID DECO® LEVEL 5 TYPE X, 5/8" FIRECHECK® PLASTERBASE TYPE X, 5/8" PROTECTA® AR 100 TYPE X, 5/8" PROTECTA® HIR 300 TYPE X, 5/8" MOLD DEFENSE® TYPE X, 5/8" WEATHER DEFENSE® TYPE X.
4. CONTRACTORS NOTE: FOR PRODUCT AND COMPANY INFORMATION VISIT [www.CADdetails.com/info](http://www.CADdetails.com/info) REFERENCE NUMBER 3285-028.

**WOOD STUD WALL SYSTEMS  
 WALL PARTITIONS - LOAD-BEARING**



1 HOUR FIRE RATING / STC 45