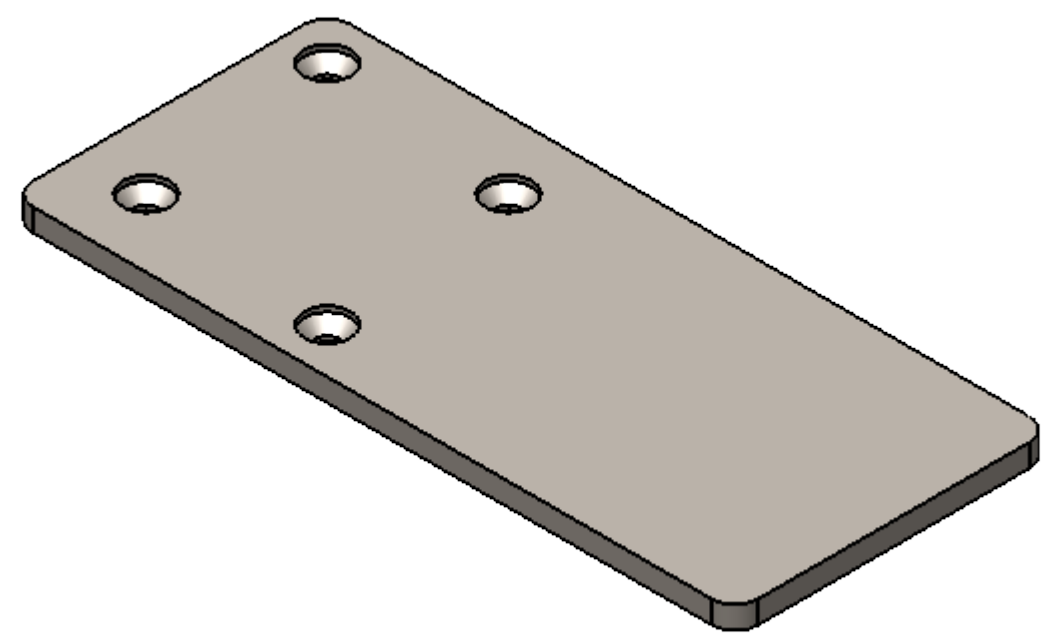


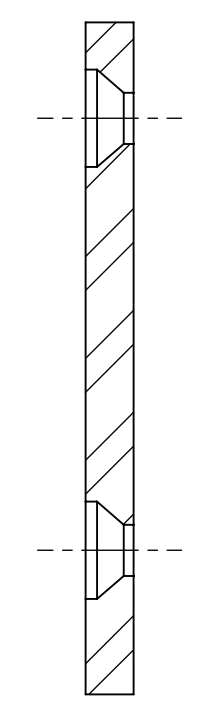
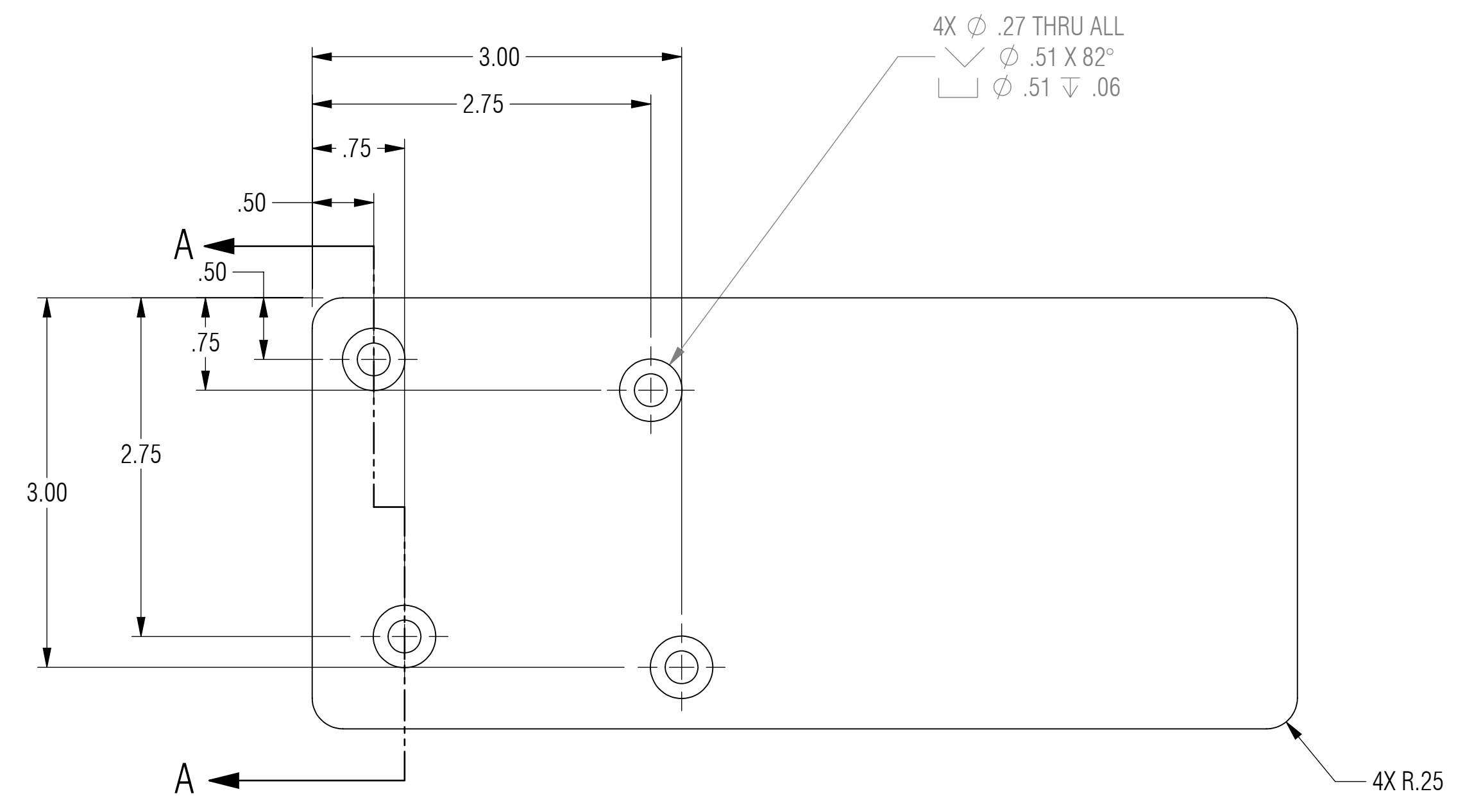
REVISION STATUS - ALL SHEETS ARE THE SAME REVISION				
ZONE	REV.	DESCRIPTION	DATE	APPROVED
	X1	DEVELOPMENT	01/30/2017	KRH

NOTES: UNLESS OTHERWISE SPECIFIED

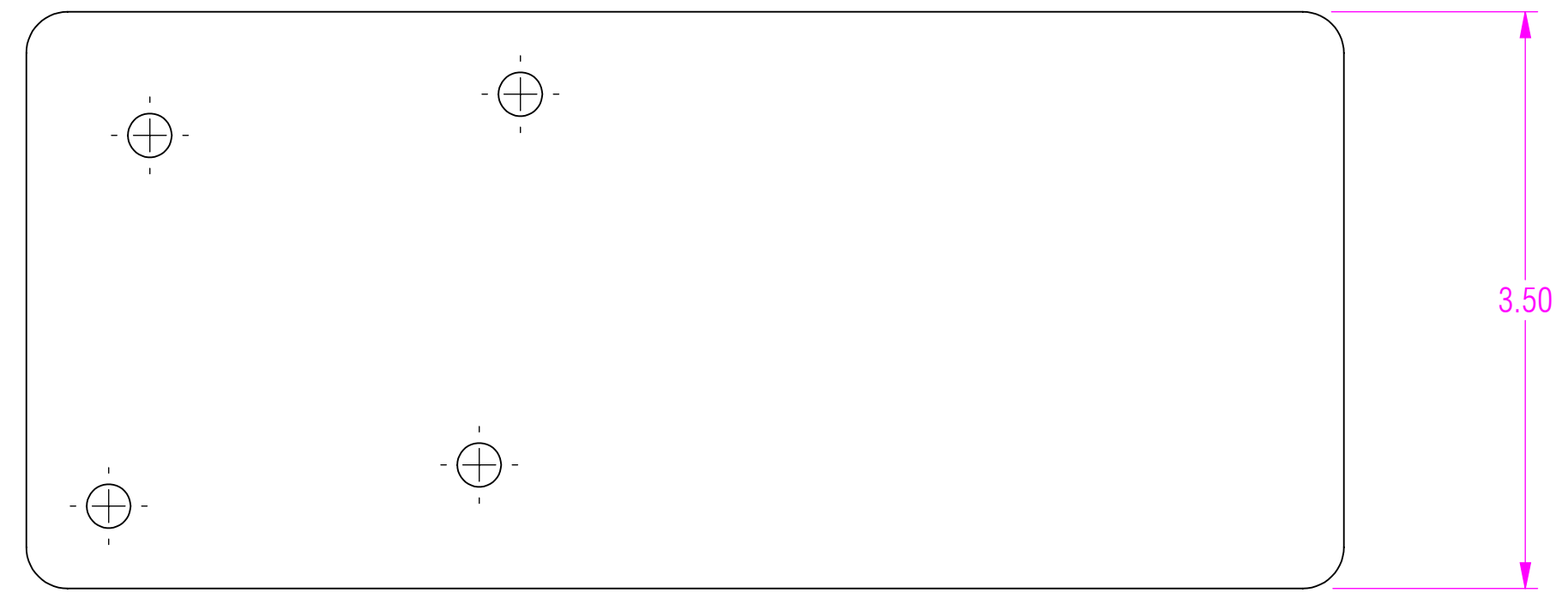
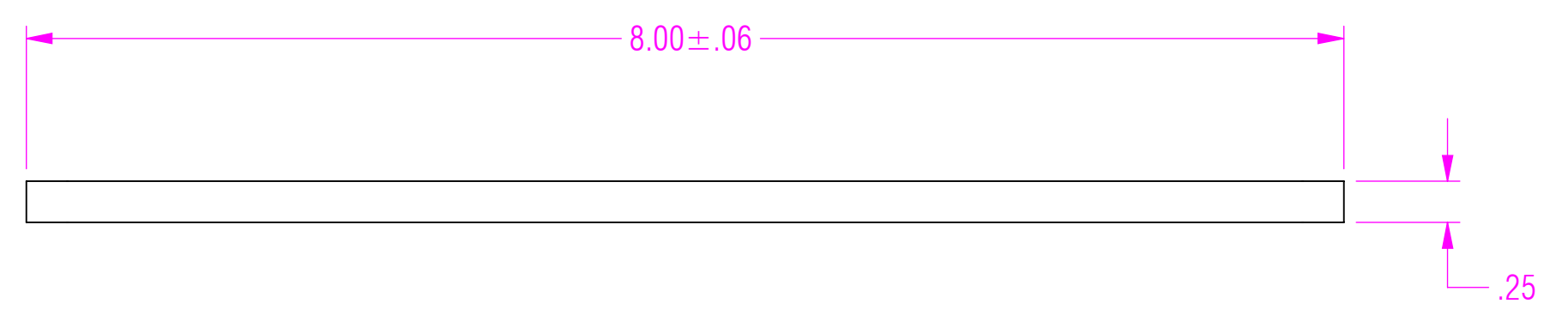
- 1 MATERIAL: ASTM A36, HOT ROLLED STEEL, OR CENTERLINE STEEL, LLC APPROVED EQUIVALENT.
- 2 ALL DIMENSIONS ARE TO THEORETICAL SHARP.
- 3 REMOVE BURRS AND BREAK ALL SHARP EDGES .03 MAX.
- 4 ALL DIMENSIONS ARE IN INCHES UNLESS STATED OTHERWISE.
- 5 PARTS SHALL BE FREE OF GREASE AND CUTTING FLUID.
- 6 POWDER COAT PER MIL-PRF-24712A (TYPE 3, CLASS 3)



ISOMETRIC VIEW
FOR REFERENCE ONLY
CST-08 ONLY



SECTION A-A



RELEASED

UNLESS OTHERWISE SPECIFIED: DIMENSIONS ARE IN INCHES		ENGINEER		
TOLERANCES ARE:		ENGINEER		
.XX ± .01	ANGLES	CHECKED	CAS	01/30/2017
.XXX ± .005	XX° ± 1°	DRAWN	KRH	01/30/2017
INTERPRET DRAWINGS IN ACCORDANCE WITH:		MANAGER APPROVAL		
ASME Y14.100	ENGINEERING DRAWING PRACTICES	THE INFORMATION ON THIS DRAWING IS PROPRIETARY AND SHALL NOT BE DISCLOSED, USED, OR DUPLICATED FOR PROCUREMENT OR MANUFACTURING PURPOSES WITHOUT THE EXPRESS WRITTEN CONSENT OF CENTERLINE STEEL, LLC		
ASME Y14.38	ABBREVIATIONS			
ASME Y14.5	DIMENSIONING AND TOLERANCING			
ASME Y14.6	SCREW THREAD REPRESENTATION			
ASME Y14.8	CASTINGS, FORGINGS & MOLDED PARTS			
AWS A2.4	WELDING SYMBOLS	THIRD ANGLE PROJECTION		
IEEE STD 315	SYMBOLS FOR ELECTRICAL AND ELECTRONIC DIAGRAMS			
USED ON APPLICATION				
		DRAWING TITLE		
		COMMERCIAL STANDARD BRACKET		
SIZE	CAGE CODE	DRAWING NO	REV	
D		CST	X1	
SCALE	1:1			SHEET 1 OF 3

8

7

6

5

4

3

2

1

D

D

C

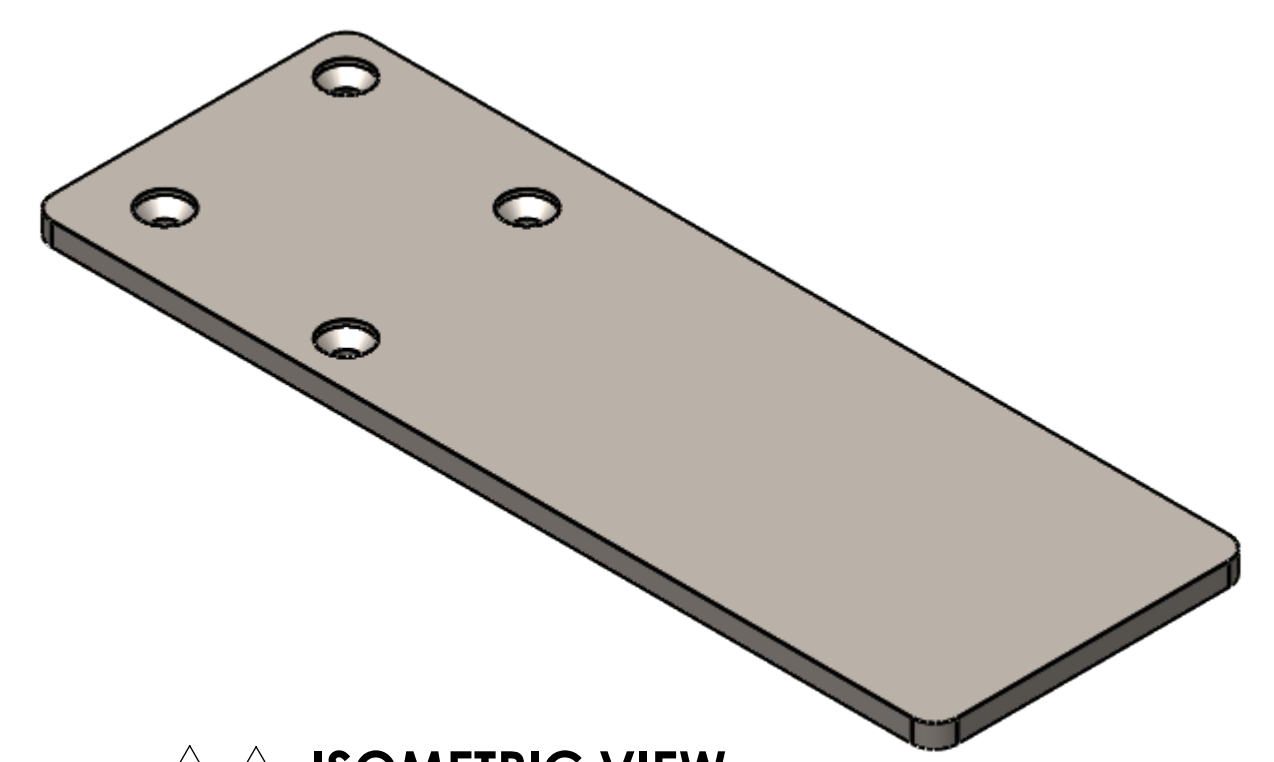
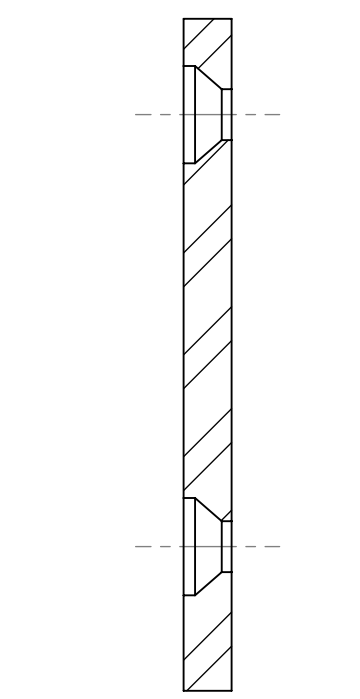
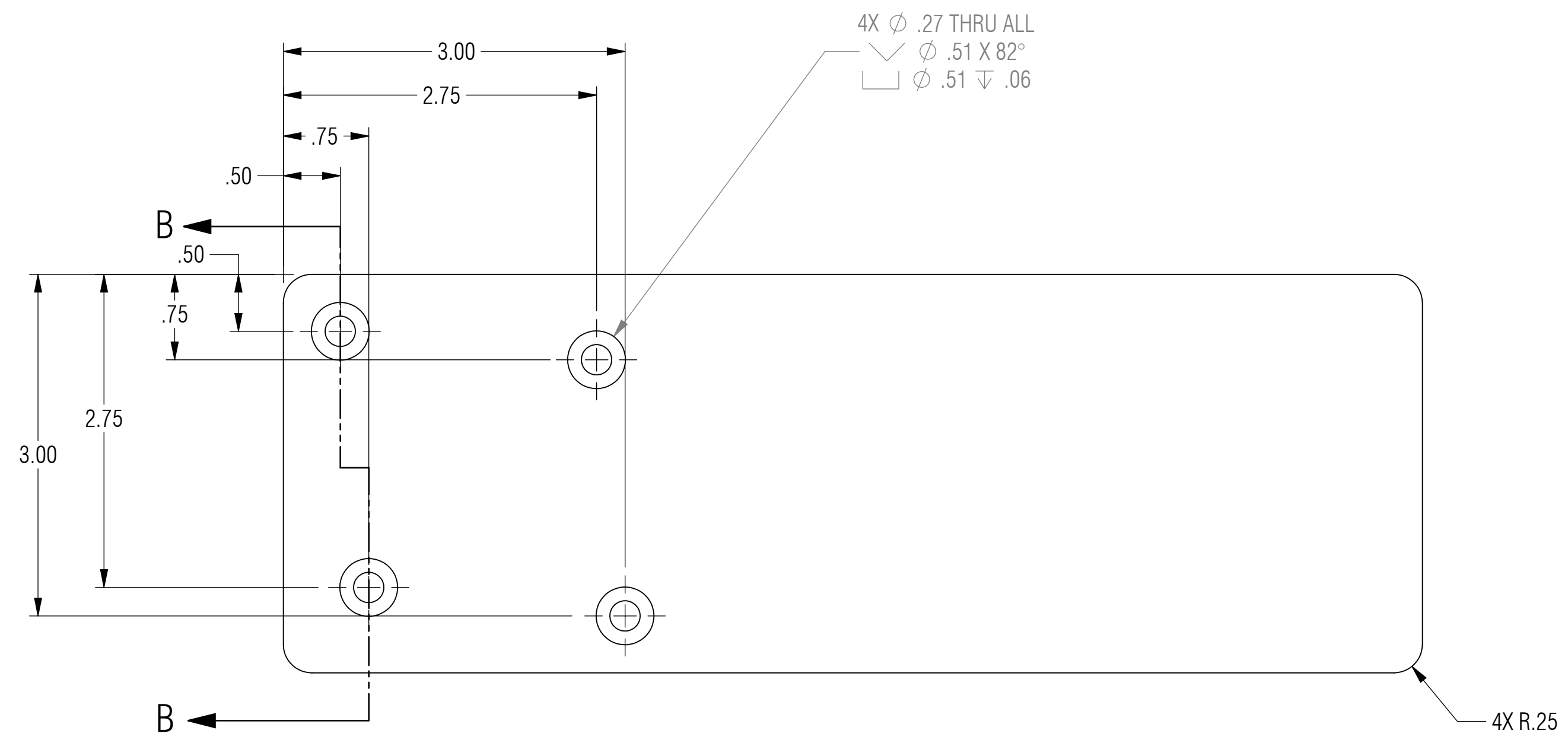
C

B

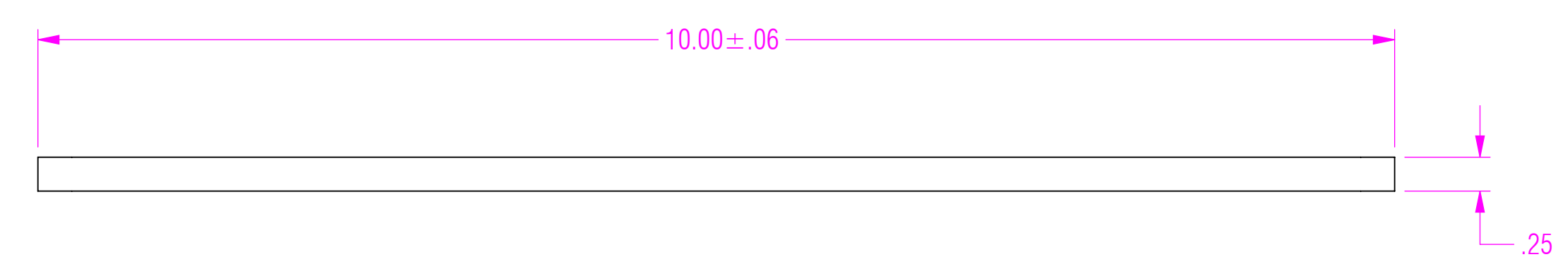
B

A

A



ISOMETRIC VIEW
 FOR REFERENCE ONLY
 CST-10 ONLY



SIZE	CAGE CODE	DRAWING NO	REV
D		CST	X1
SCALE	1:1	SHEET 2 OF 3	

8

7

6

5

4

3

2

MULTI SHEET

1

8

7

6

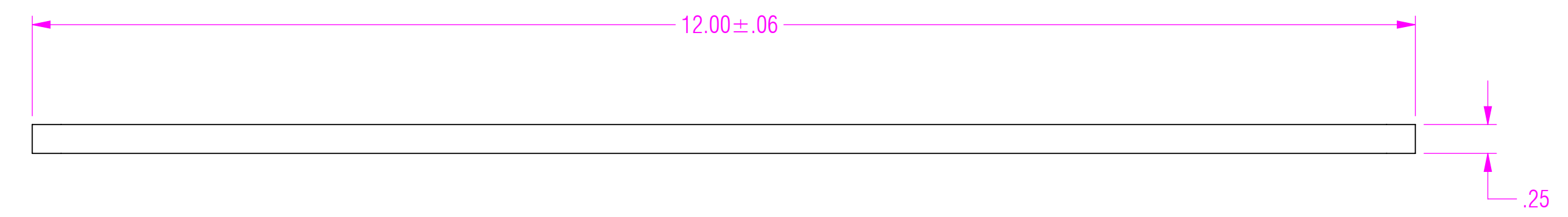
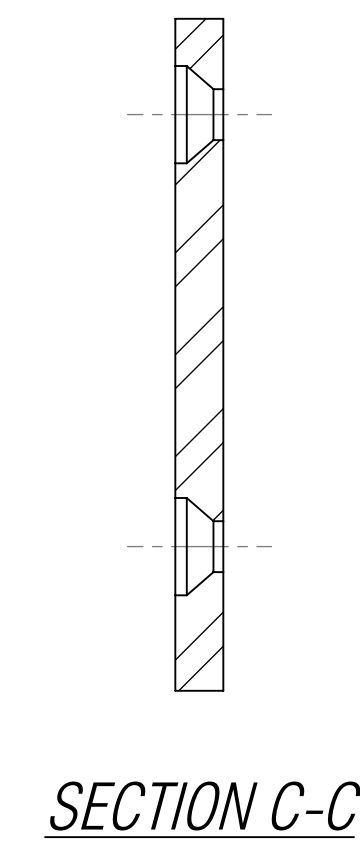
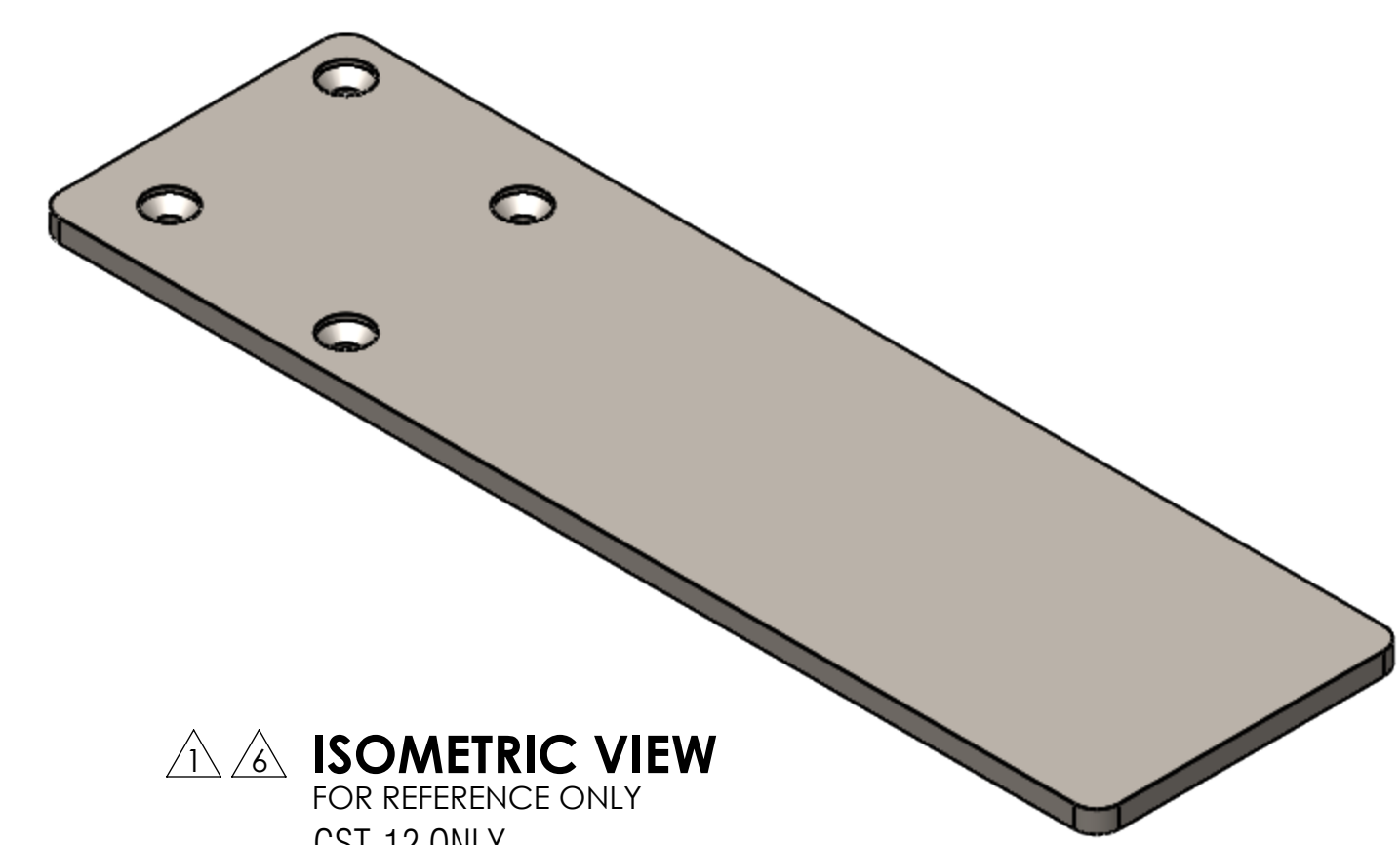
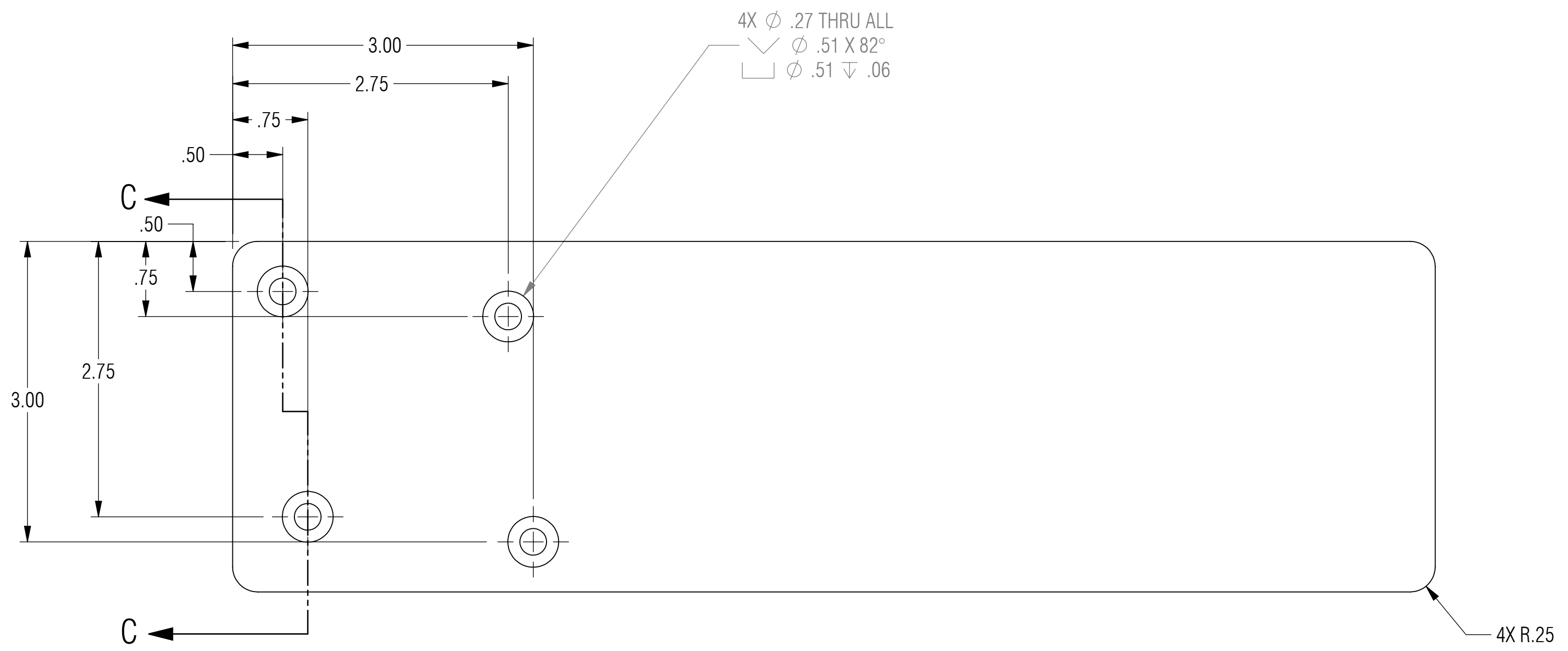
5

4

3

2

1



SIZE	CAGE CODE	DRAWING NO	REV
D		CST	X1
SCALE	1:1	SHEET 3 OF 3	

8

7

6

5

4

3

2

1