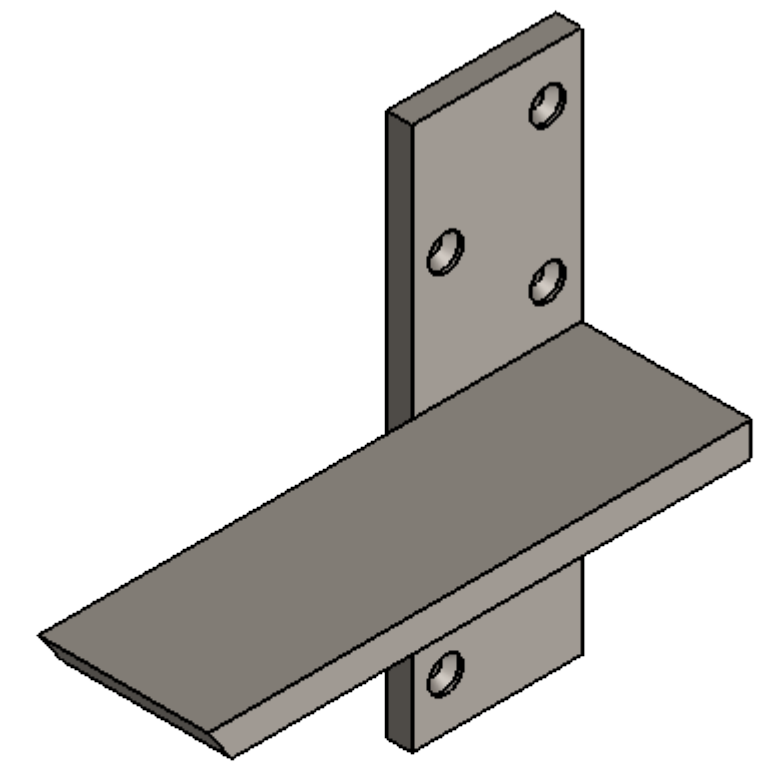
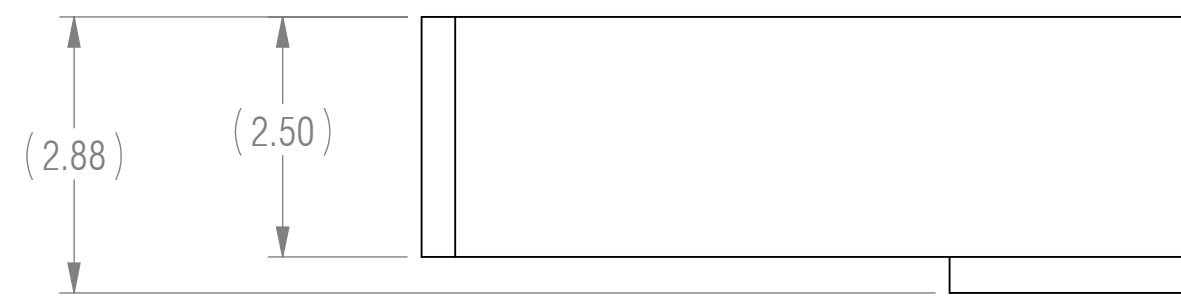
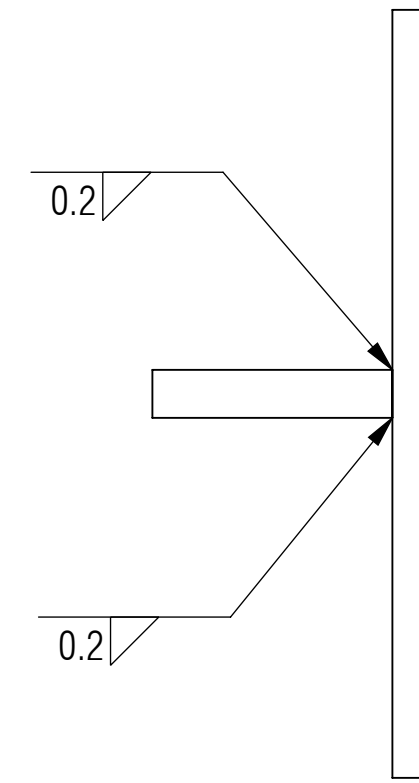
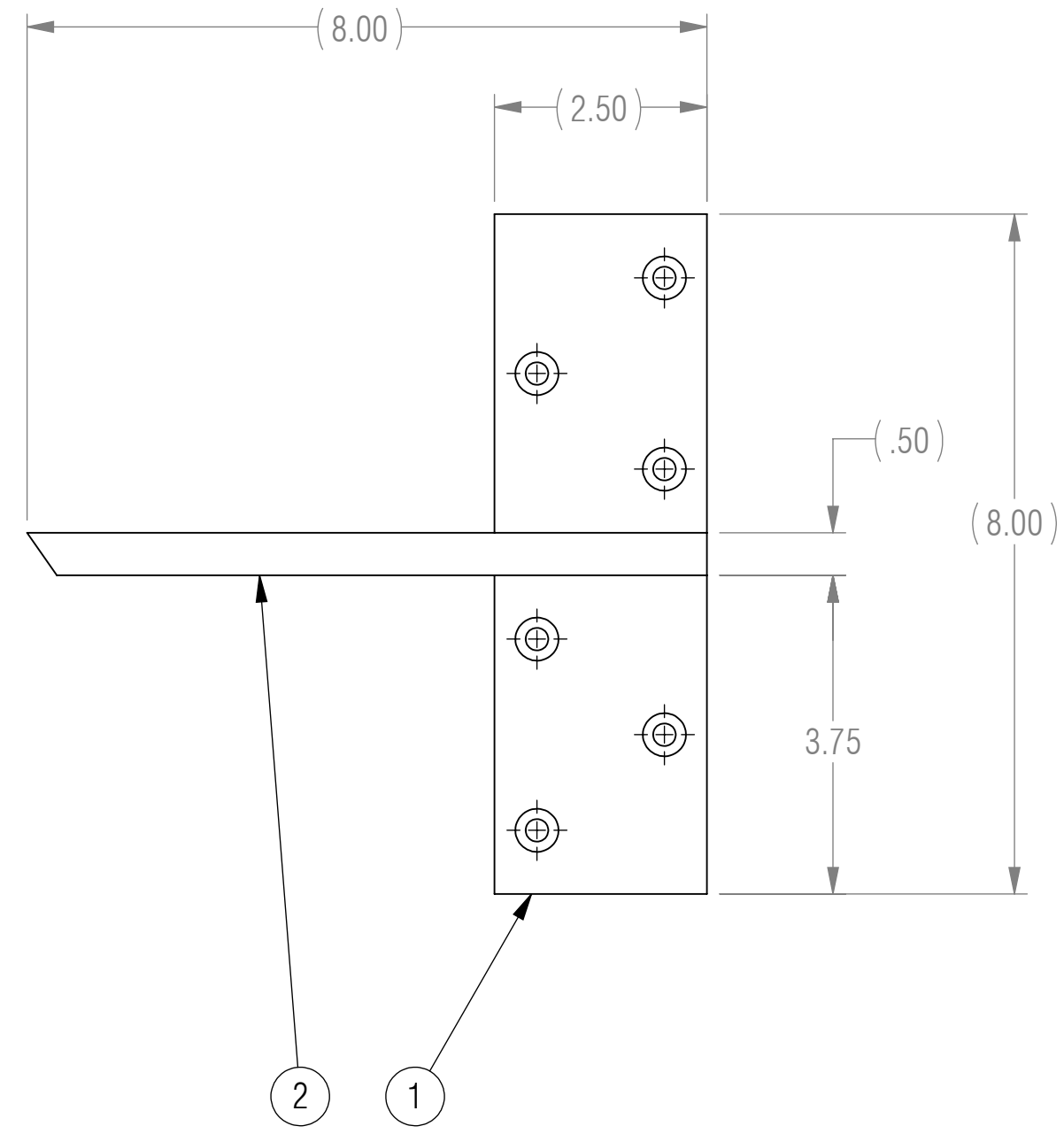


NOTES: UNLESS OTHERWISE SPECIFIED

- 1 MATERIAL: MATERIAL SPECIFIED AT INDIVIDUAL PART LEVEL
- 2 ALL DIMENSIONS ARE TO THEORETICAL SHARP.
- 3 REMOVE BURRS AND BREAK ALL SHARP EDGES .03 MAX.
- 4 ALL DIMENSIONS ARE IN INCHES UNLESS STATED OTHERWISE.
- 5 PARTS SHALL BE FREE OF GREASE AND CUTTING FLUID.
- 6 POWDER COAT PER MIL-PRF-24712A (TYPE 3, CLASS 3)

REVISIONS				
ZONE	REV.	DESCRIPTION	DATE	APPROVED
	X1	DEVELOPMENT	03/14/2017	KRH



ISOMETRIC VIEW FOR REFERENCE ONLY

BOM TABLE			
ITEM NO.	PART NUMBER	DESCRIPTION	QTY.
1	A-FWM	FWM FLANGE	1
2	HFWM-8.00	HORIZONTAL FLOATING WALL MOUNT	1

RELEASED

<small>UNLESS OTHERWISE SPECIFIED: DIMENSIONS ARE IN INCHES</small> <small>TOLERANCES ARE:</small> .XX ± .01 .XXX ± .005		<small>ANGLES</small> XX° ± 1°		<small>ENGINEER</small> <small>ENGINEER</small> <small>ENGINEER</small> <small>CHECKED CAS</small> <small>DRAWN KRH</small>	<small>03/14/2017</small> <small>03/14/2017</small>	
<small>INTERPRET DRAWINGS IN ACCORDANCE WITH:</small> ASME Y14.100 ENGINEERING DRAWING PRACTICES ASME Y14.38 ABBREVIATIONS ASME Y14.5 DIMENSIONING AND TOLERANCING ASME Y14.6 SCREW THREAD REPRESENTATION ASME Y14.8 CASTINGS, FORGINGS & MOLDED PARTS AWS A2.4 WELDING SYMBOLS IEEE STD 315 SYMBOLS FOR ELECTRICAL AND ELECTRONIC DIAGRAMMS		<small>THIRD ANGLE PROJECTION</small> 		<small>MANAGER APPROVAL</small>		
<small>USED ON APPLICATION</small>		<small>THE INFORMATION ON THIS DRAWING IS PROPRIETARY AND SHALL NOT BE DISCLOSED, USED, OR DUPLICATED FOR PROCUREMENT OR MANUFACTURING PURPOSES WITHOUT THE EXPRESS WRITTEN CONSENT OF CENTERLINE STEEL, LLC</small>		<small>SIZE</small> D		<small>CAGE CODE</small> FWM-L08
<small>SCALE</small> 1:2		<small>DRAWING NO</small> FWM-L08		<small>REV</small> X1		<small>SHEET 1 OF 1</small>