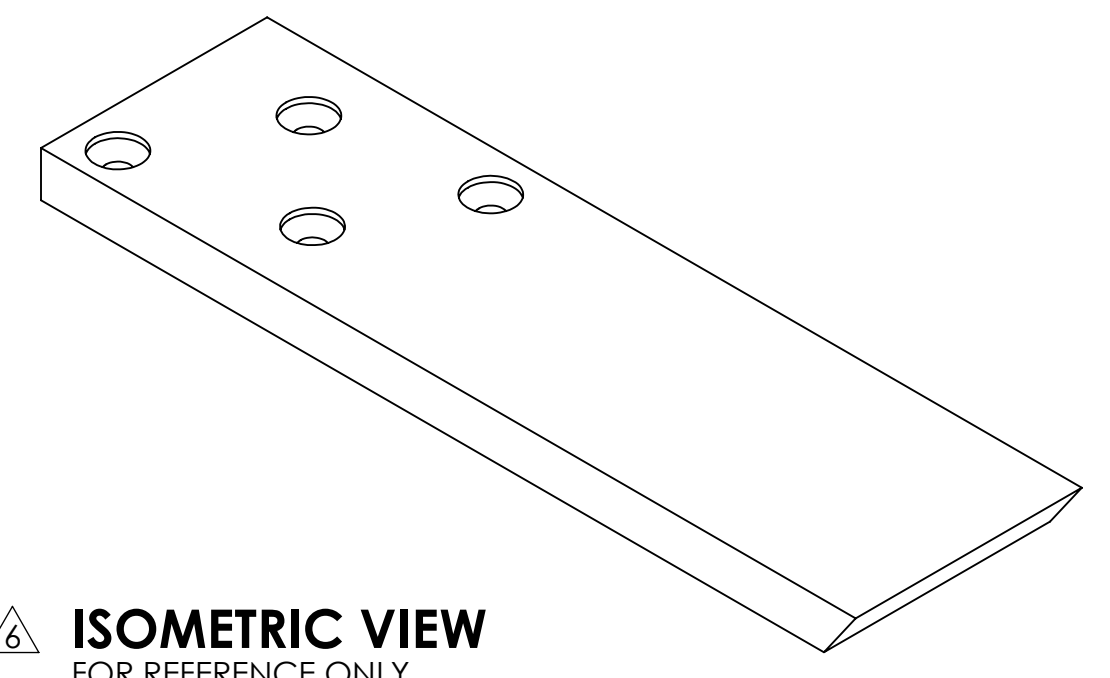


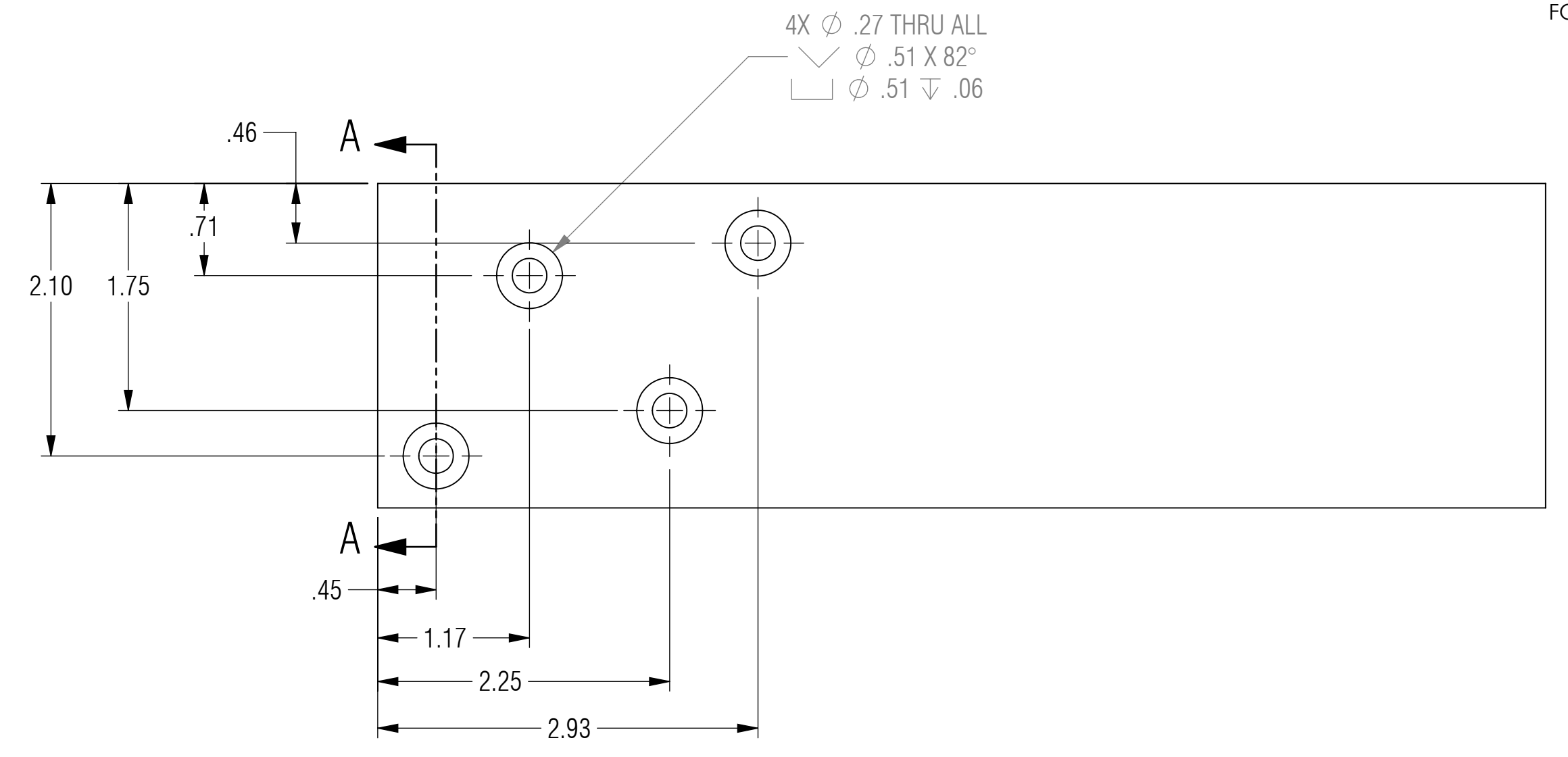
REVISION STATUS - ALL SHEETS ARE THE SAME REVISION				
ZONE	REV.	DESCRIPTION	DATE	APPROVED
	X1	DEVELOPMENT	01/31/2017	KRH

NOTES: UNLESS OTHERWISE SPECIFIED

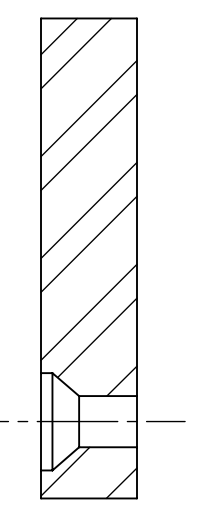
- 1 MATERIAL: ASTM A36, HOT ROLLED STEEL, OR CENTERLINE STEEL, LLC APPROVED EQUIVALENT.
- 2 ALL DIMENSIONS ARE TO THEORETICAL SHARP.
- 3 REMOVE BURRS AND BREAK ALL SHARP EDGES .03 MAX.
- 4 ALL DIMENSIONS ARE IN INCHES UNLESS STATED OTHERWISE.
- 5 PARTS SHALL BE FREE OF GREASE AND CUTTING FLUID.
- 6 POWDER COAT PER MIL-PRF-24712A (TYPE 3, CLASS 3)



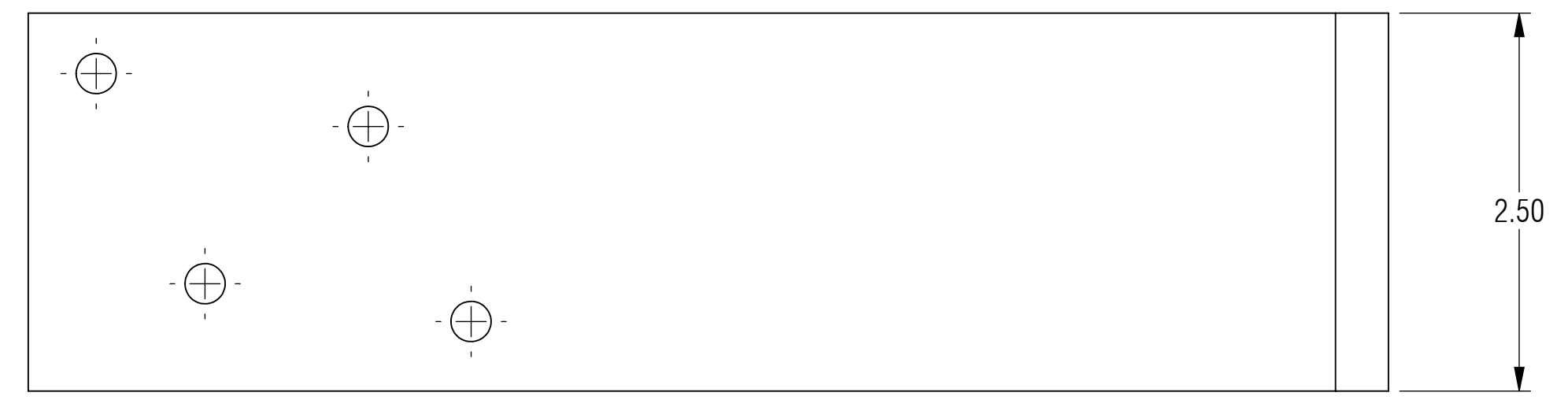
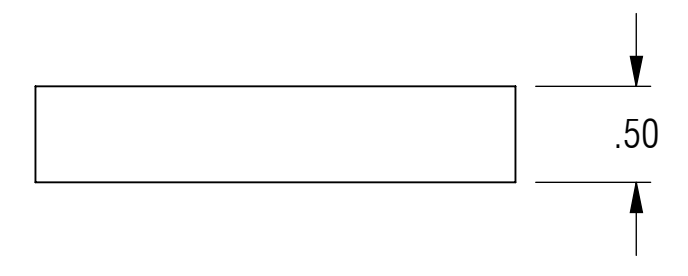
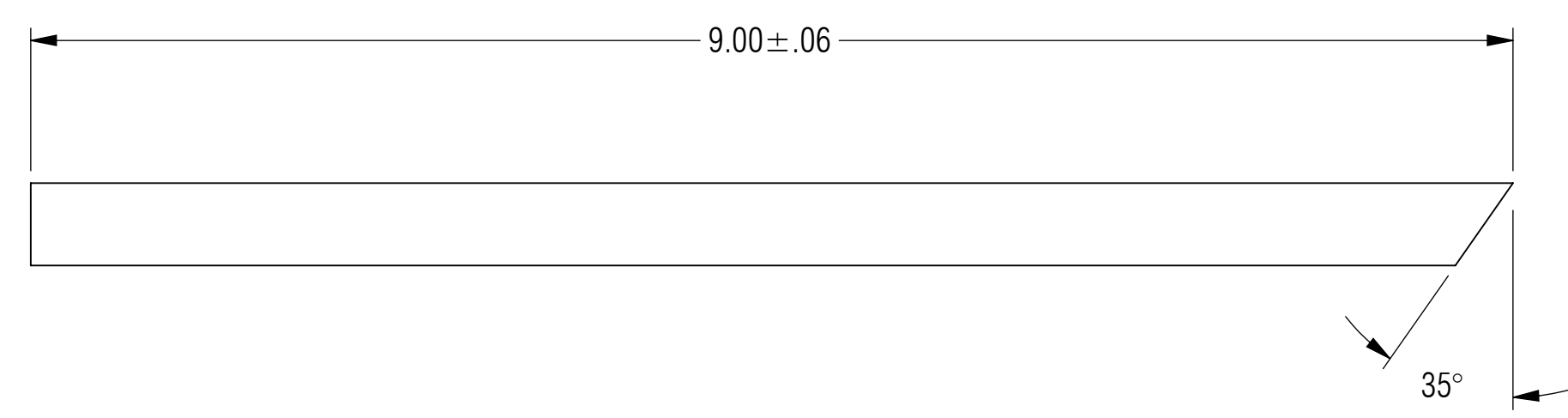
ISOMETRIC VIEW
FOR REFERENCE ONLY



4X ϕ .27 THRU ALL
 \sphericalangle ϕ .51 X 82°
 \square ϕ .51 ∇ .06



SECTION A-A



RELEASED

UNLESS OTHERWISE SPECIFIED: DIMENSIONS ARE IN INCHES TOLERANCES ARE: .XX ± .01 .XXX ± .005 ANGLES XX° ± 1°	ENGINEER ENGINEER ENGINEER CHECKED CAS DRAWN KRH	01/31/2017 01/31/2017 MANAGER APPROVAL			
	INTERPRET DRAWINGS IN ACCORDANCE WITH: ASME Y14.100 ENGINEERING DRAWING PRACTICES ASME Y14.38 ABBREVIATIONS ASME Y14.5 DIMENSIONING AND TOLERANCING ASME Y14.6 SCREW THREAD REPRESENTATION ASME Y14.8 CASTINGS, FORGINGS & MOLDED PARTS AWS A2.4 WELDING SYMBOLS IEEE STD 315 SYMBOLS FOR ELECTRICAL AND ELECTRONIC DIAGRAMS			DRAWING TITLE STANDARD BRACKET	
	THE INFORMATION ON THIS DRAWING IS PROPRIETARY AND SHALL NOT BE DISCLOSED, USED, OR DUPLICATED FOR PROCUREMENT OR MANUFACTURING PURPOSES WITHOUT THE EXPRESS WRITTEN CONSENT OF CENTERLINE STEEL, LLC			THIRD ANGLE PROJECTION 	SIZE D SCALE 1:1
	USED ON APPLICATION	THE EXPRESSES WRITTEN CONSENT OF CENTERLINE STEEL, LLC		DRAWING NO SB4H-09 REV X1	SHEET 1 OF 1