

(*) CONTINUOUS
VERTICAL ZEE
SHAPED SUBGIRT
(SHIM AS REQUIRED)

(*) SUBGIRTS SHALL BE

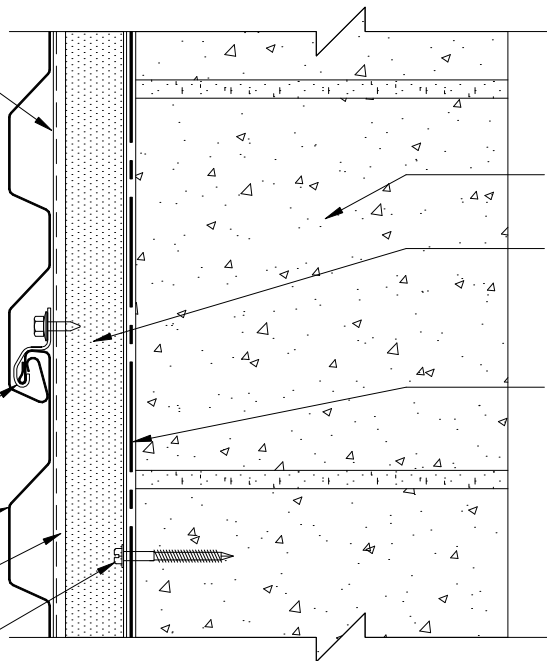
- 1.) 16 GA. MINIMUM.
- 2.) 3/4" [19] MINIMUM DEPTH.
- 3.) 1/4" [6] DEEPER THAN INSULATION THICKNESS.
- 4.) SPACED AT 24" [610] OR 48" O.C. [1219] BASED ON DESIGN LOADS AND INSULATION SIZE.

CONCEPT SERIES
CSC-3 CLIP

CONCEPT SERIES
PANEL

DRAINED &
VENTED CAVITY

MASONRY FASTENER



MASONRY (NBC)

INSULATION SUITABLE
FOR MOISTURE
EXPOSURE (NBC)

AIR BARRIER & WATER
RESISTANT COATING
OR MEMBRANE (NBC)

PANELS WITH INSULATION OVER MASONRY WALL

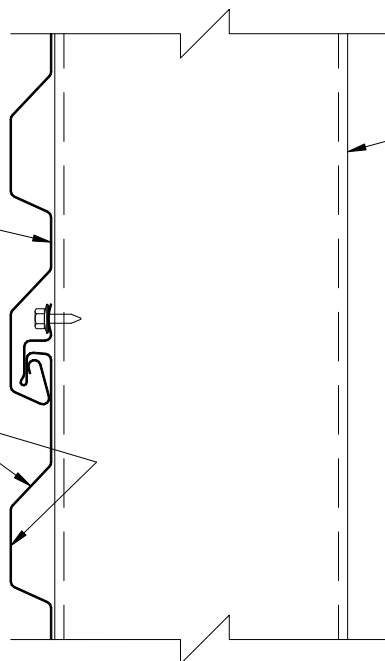
VAPOR RETARDER LOCATION

THE LOCATION OF THE VAPOR (DIFFUSION) RETARDER IS NOT IDENTIFIED IN THIS DETAIL BECAUSE IT IS A REQUIREMENT THAT VARIES BY CODE JURISDICTION, CLIMATE AND INTERIOR CONDITIONS. THEREFORE THE BUILDING DESIGNER MUST MAKE THIS DETERMINATION.

(NBC) = NOT BY CENTRIA

CONCEPT SERIES PANEL
WITH EXTENDED FASTENING
LEG (NO CLIP REQUIRED)

FINISH IS REQUIRED ON BOTH
SIDES OF THE PANEL SINCE
BOTH SIDES ARE EXPOSED TO
THE WEATHER



VERTICAL SUPPORTS
(NBC)

PANELS USED AS A SCREEN WALL

(NBC) = NOT BY CENTRIA



CENTRIA
CENTRIA Architectural Systems

CONCEPT SERIES PANELS HORIZONTAL APPLICATION

page
CSH-08

Oct. 16