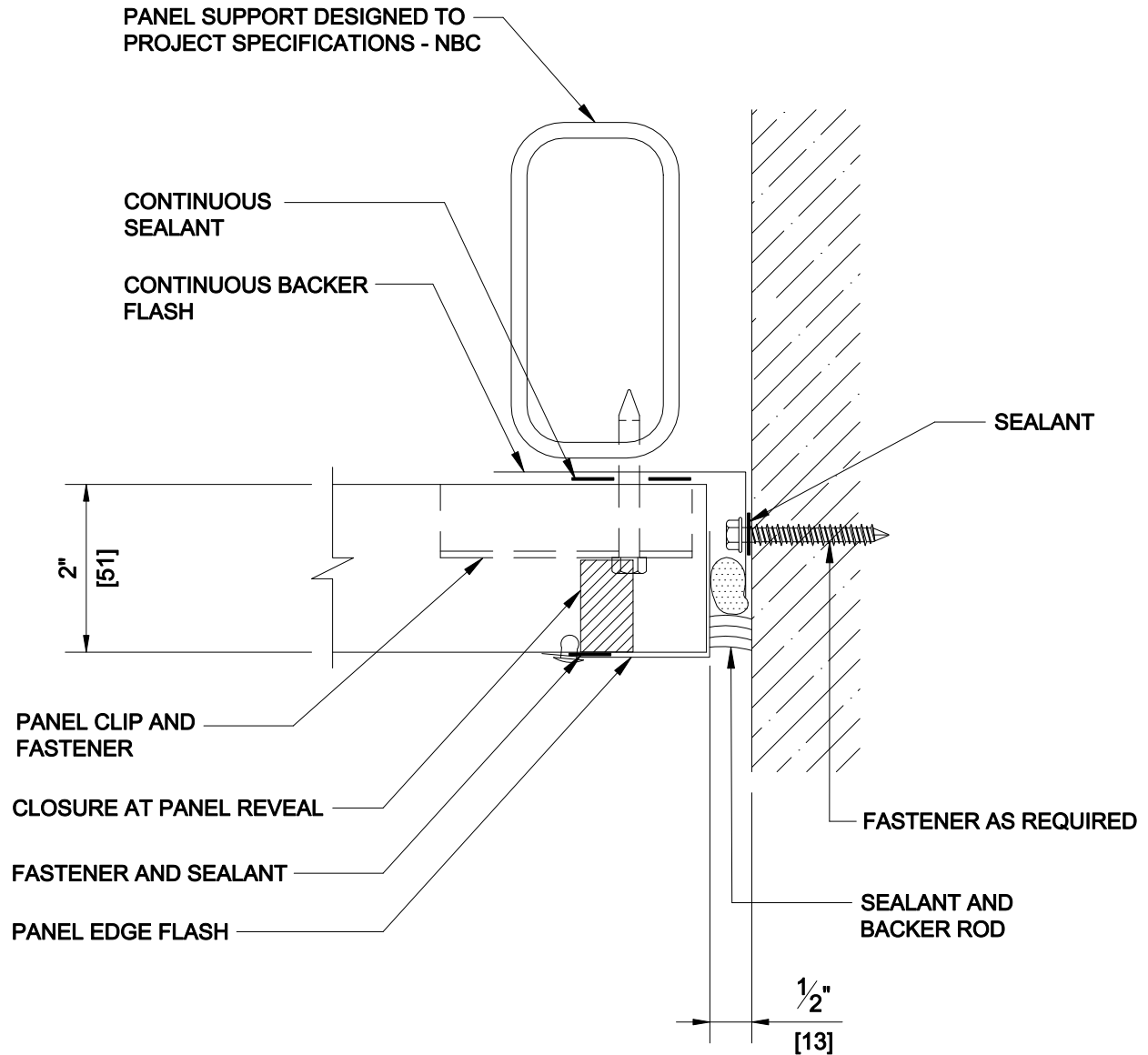


# Versawall +

## DESIGNER NOTE:

ADJACENT WALL DESIGN NEEDS TO  
CONSIDER ITS CONSTRUCTION RELATIVE  
TO THERMAL CONDUCTIVITY AND AIR  
INFILTRATION.



HORIZONTAL APPLICATION

DETAIL: 3" VERSAWALL H+  
ELEVATION GUIDE

DATE: 2020

