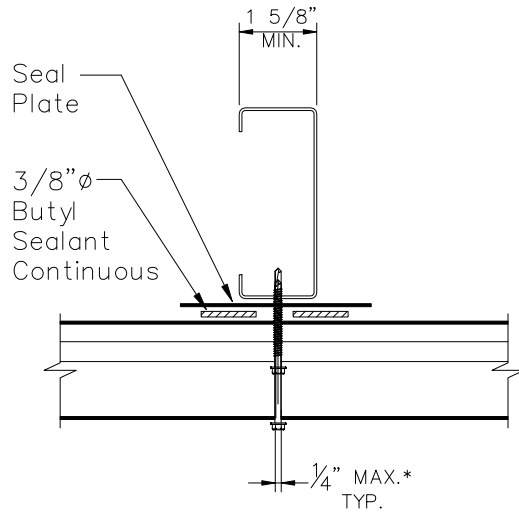
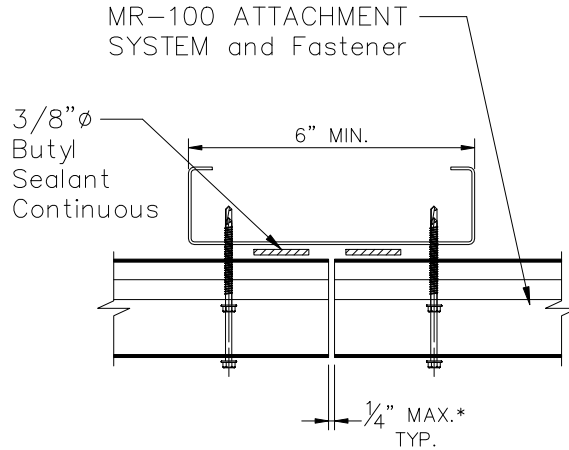


METALWRAP-H w/MR-100



VERTICAL JOINT
@ SINGLE STUD

* Without the Need to
Add Additional
Low-Expansion Foam



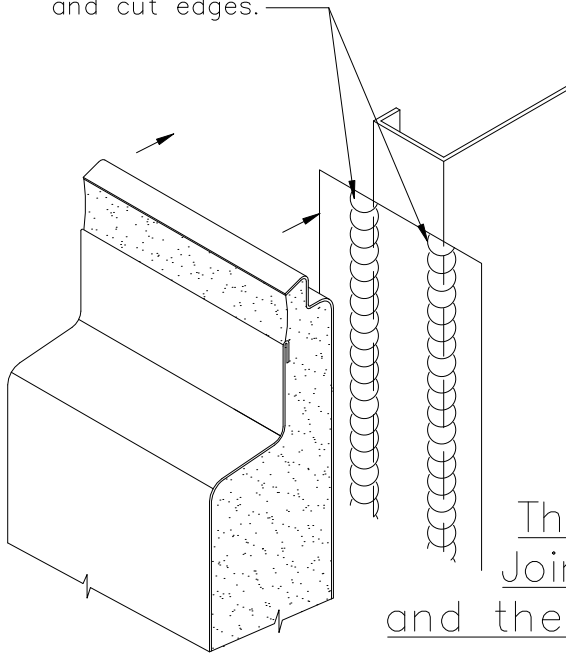
VERTICAL JOINT
NOT @ STUD**

** Limited to standard
16" or 24" stud spacing

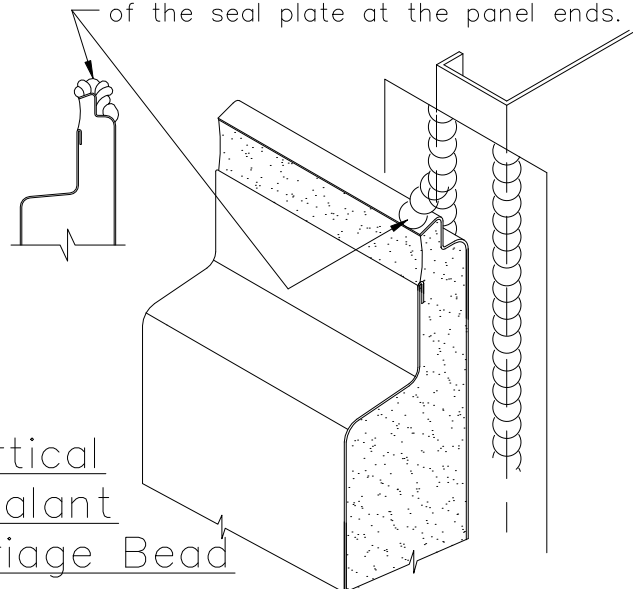
Horizontal Section Describing Two Approved Methods of Panel End Support

Two 3/8"Ø beads of high
grade butyl sealant are field
applied to the seal plate at
panel ends, joints, perimeters
and cut edges.

Place 3/8"Ø bead of high grade
butyl sealant over the panel liner
male leg as shown. This "marriage
bead" will connect the shop installed
butyl sealant in the side joint of the
panel above to the field applied butyl
of the seal plate at the panel ends.



The Vertical
Joint Sealant
and the Marriage Bead



METALwrap

**Vertical Joint
MR100-02**

JANUARY 2018