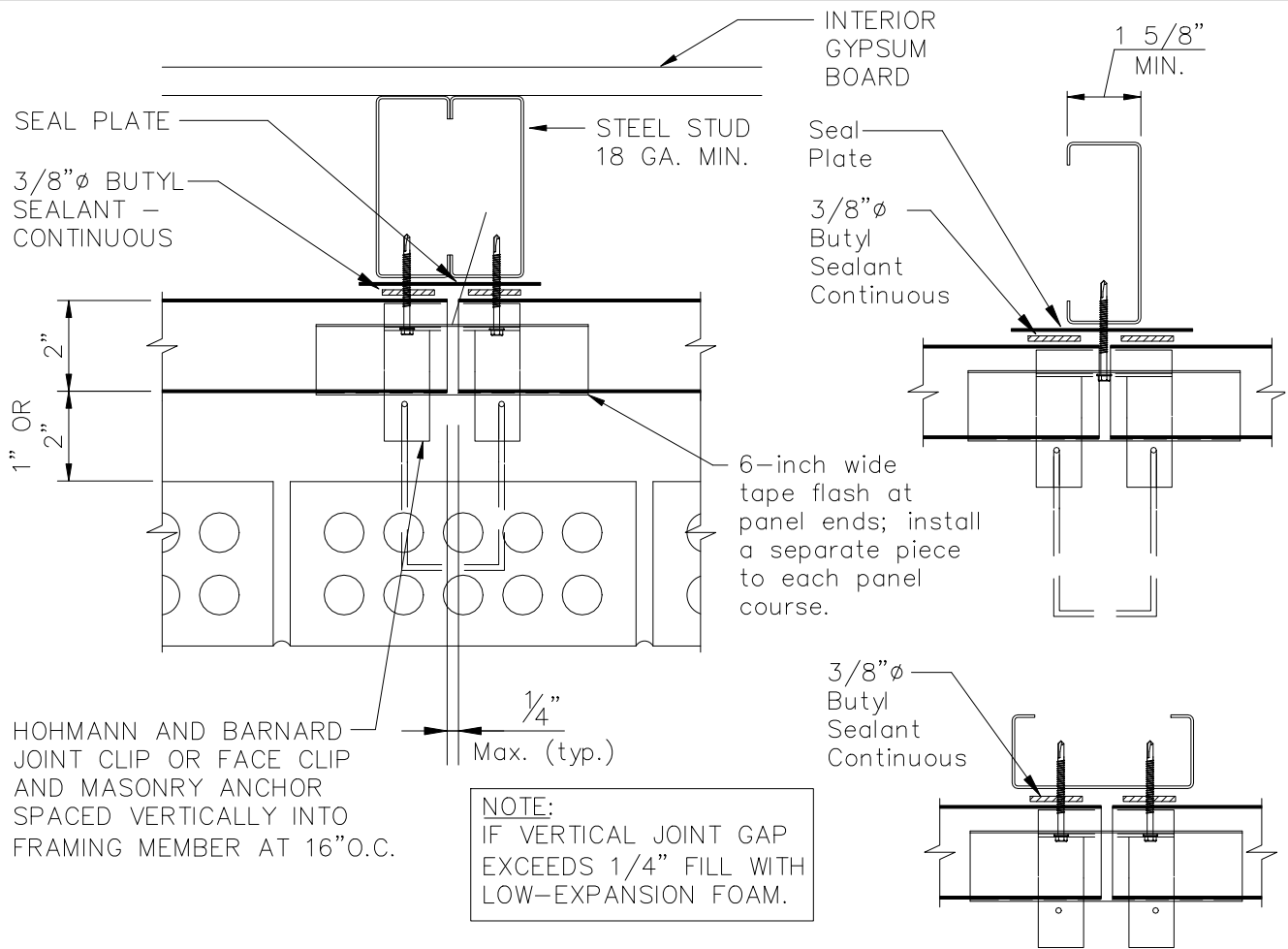


HORIZONTAL METALWRAP - MASONRY

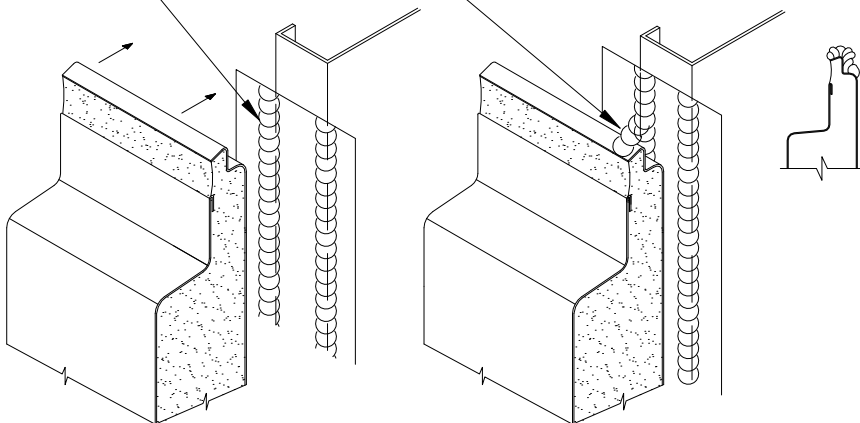


A 3/8"Ø bead of high grade butyl sealant is field applied at panel ends, joints, perimeters and cut edges.

Place a bead of high grade butyl sealant over the panel liner male leg as shown. This will connect the shop installed butyl sealant to the field applied panel end, joint, perimeter and cut edge butyl sealant.

Panel ends can be located off the standard 16" or 24" stud spacing. In this case, the wire hook tie is not required.

ALTERNATE Vertical Joints



METALwrap

**Vertical Joint
MR200-02**

JANUARY 2018