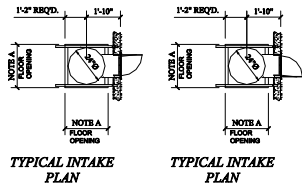
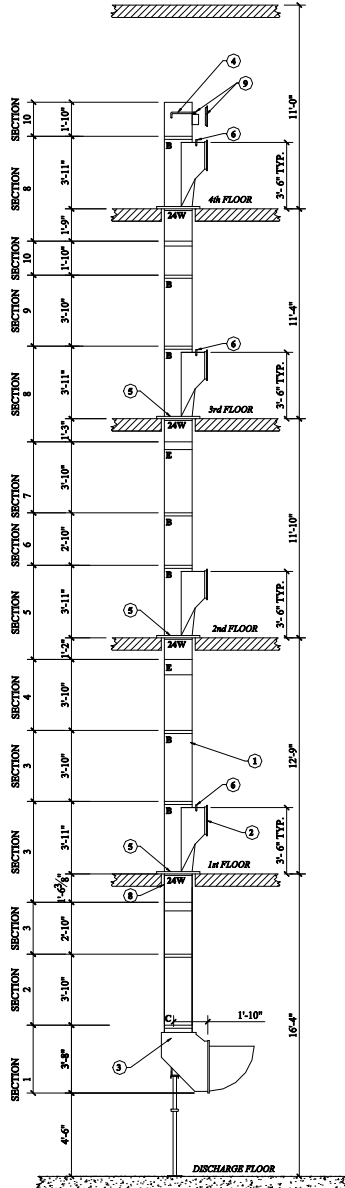


- NOTES:
- A- 28" CLEAR FLOOR SLAB OPENING (INSIDE SHAFT) REQUIRED.
 - B- VERIFY IN FIELD FLOOR OPENING DIMENSION AND COORDINATE FLOOR FRAME LEGS.
 - C- ROUND FLOOR SLAB OPENING PREFERABLE.
 - D- CLEAR INSIDE BACK WALL OF SHAFT TO FACE WALL SHOULD BE MIN. 40" AND FROM SIDE TO SIDE 28".

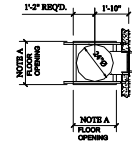


TYPICAL INTAKE PLAN

TYPICAL INTAKE PLAN



- NOTES:
- A- 28" CLEAR FLOOR SLAB OPENING (INSIDE SHAFT) REQUIRED.
 - B- VERIFY IN FIELD FLOOR OPENING DIMENSION AND COORDINATE FLOOR FRAME LEGS.
 - C- ROUND FLOOR SLAB OPENING PREFERABLE.
 - D- CLEAR INSIDE BACK WALL OF SHAFT TO FACE WALL SHOULD BE MIN. 40" AND FROM SIDE TO SIDE 28".



TYPICAL INTAKE PLAN

USE AC JOINT (2" +CLIPS) FOR ALL OUTSIDE CHUTE

