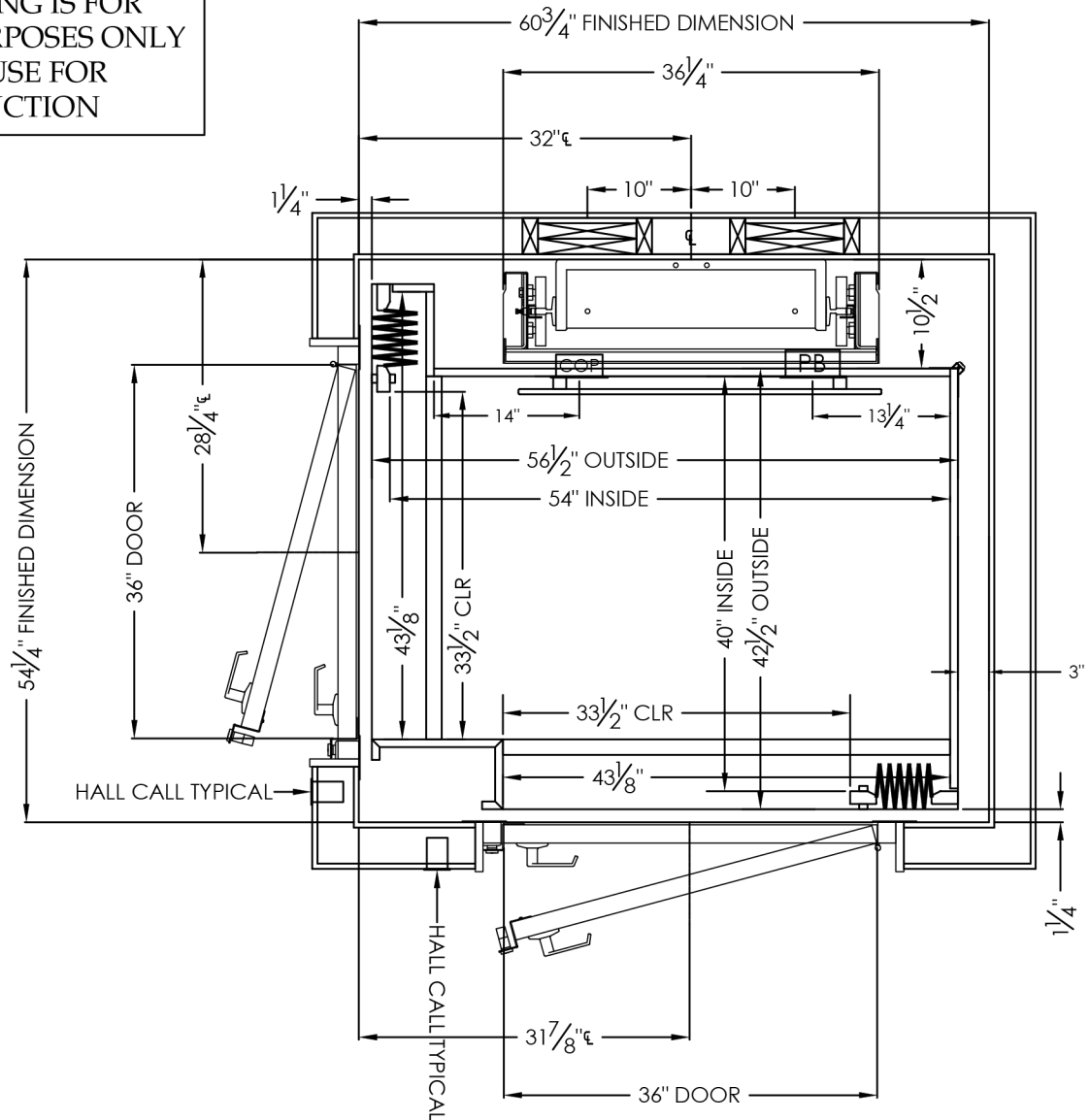


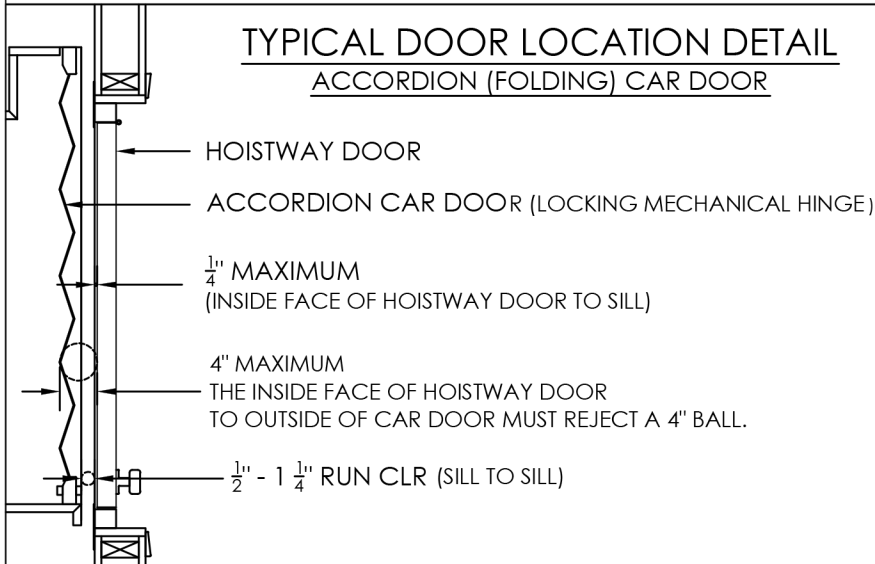
THIS DRAWING IS FOR
PLANNING PURPOSES ONLY
DO NOT USE FOR
CONSTRUCTION



NOTES:

- CAR FLOORING AND FINISHINGS MUST NOT EXCEED 25 LBS
- IN ORDER TO MEET THE 3³/₄" AND 4" REQUIREMENTS, A MAXIMUM OF 1¹/₄" HOISTWAY DOOR SETBACK IS ALLOWED, WHEN USING ACCORDION CAR DOOR(S).

TYPICAL DOOR LOCATION DETAIL
ACCORDION (FOLDING) CAR DOOR



SYMMETRY ELEVATING
SOLUTIONS

TITLE 40 X 54 90° OPENINGS RL RH LH		SCALE NONE	
DRAWN BY	DATE 05/2019	DRAWING NO. RE033	REV R0
JOB INFORMATION THIS DRAWING IS FOR PLANNING PURPOSES ONLY, DO NOT USE FOR CONSTRUCTION			