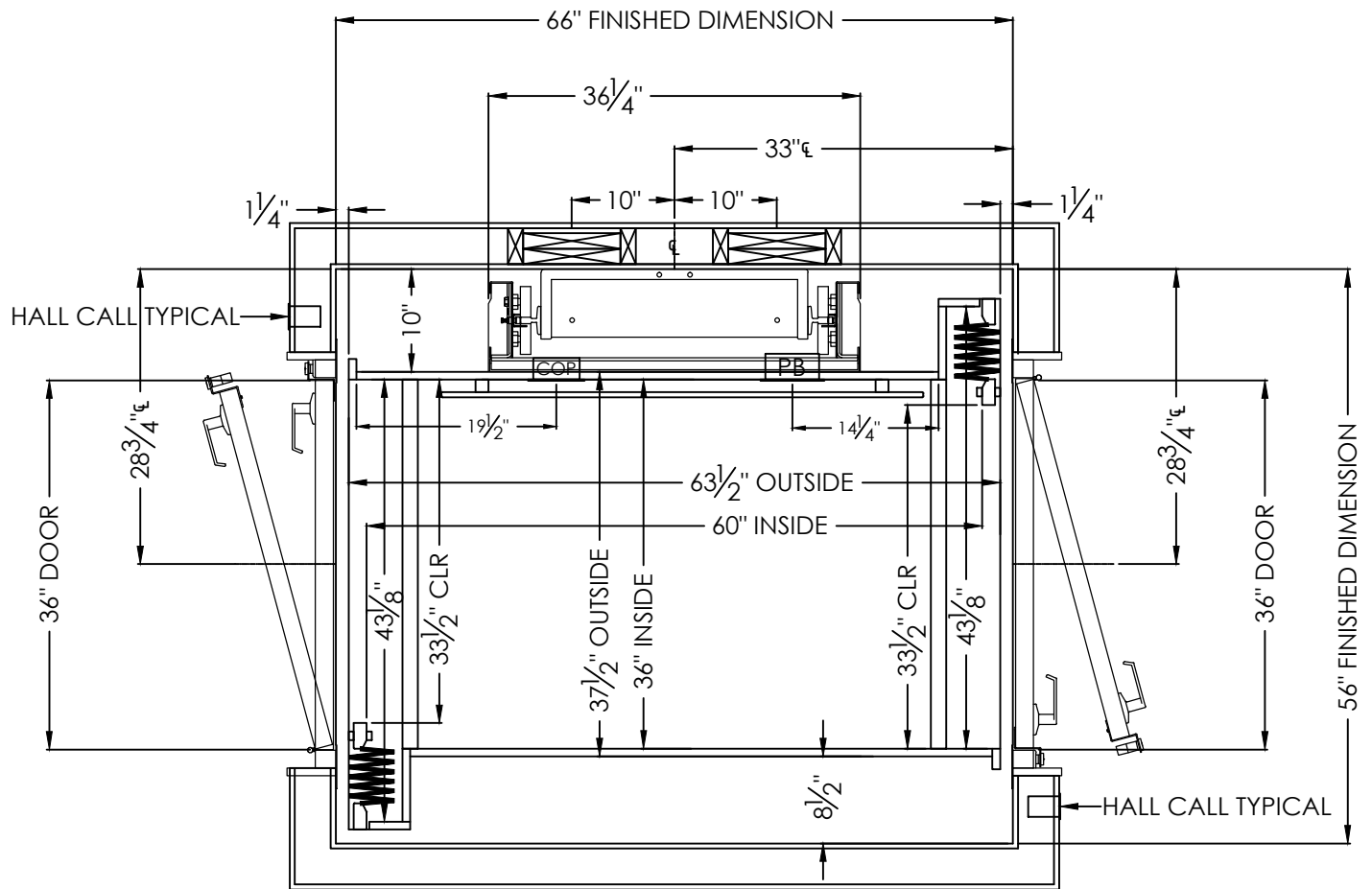


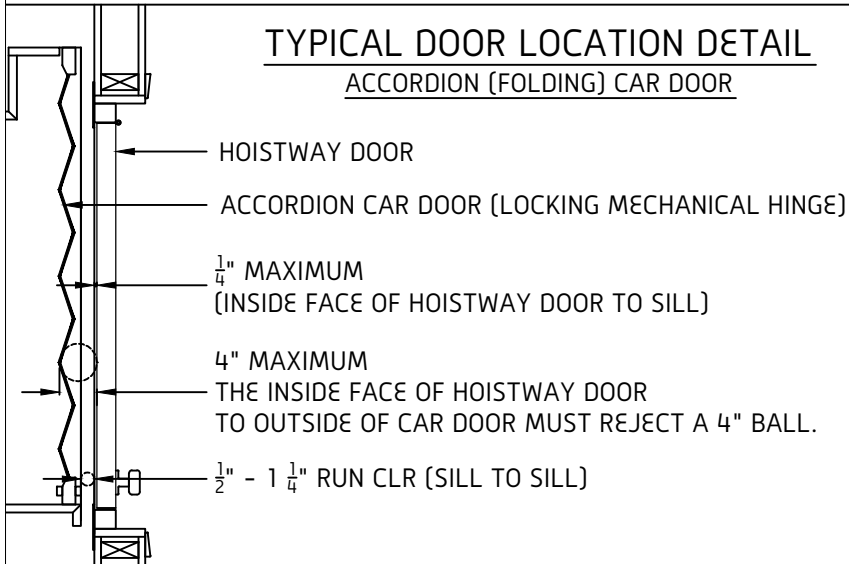
THIS DRAWING IS FOR  
PLANNING PURPOSES ONLY  
DO NOT USE FOR  
CONSTRUCTION



NOTES:

- CAR FLOORING AND FINISHINGS MUST NOT EXCEED 25 LBS
- IN ORDER TO MEET THE 3/4" AND 4" REQUIREMENTS, A MAXIMUM OF 1/4" HOISTWAY DOOR SETBACK IS ALLOWED, WHEN USING ACCORDION CAR DOOR(S).

**TYPICAL DOOR LOCATION DETAIL**  
**ACCORDION (FOLDING) CAR DOOR**



SYMMETRY ELEVATING  
SOLUTIONS

TITLE  
36 X 60 OPPOSITE OPENINGS LH LH

SCALE  
NONE

DRAWN BY

DATE

05/2019

DRAWING NO.

RE013

REV

R0

JOB INFORMATION

THIS DRAWING IS FOR PLANNING PURPOSES ONLY,  
DO NOT USE FOR CONSTRUCTION