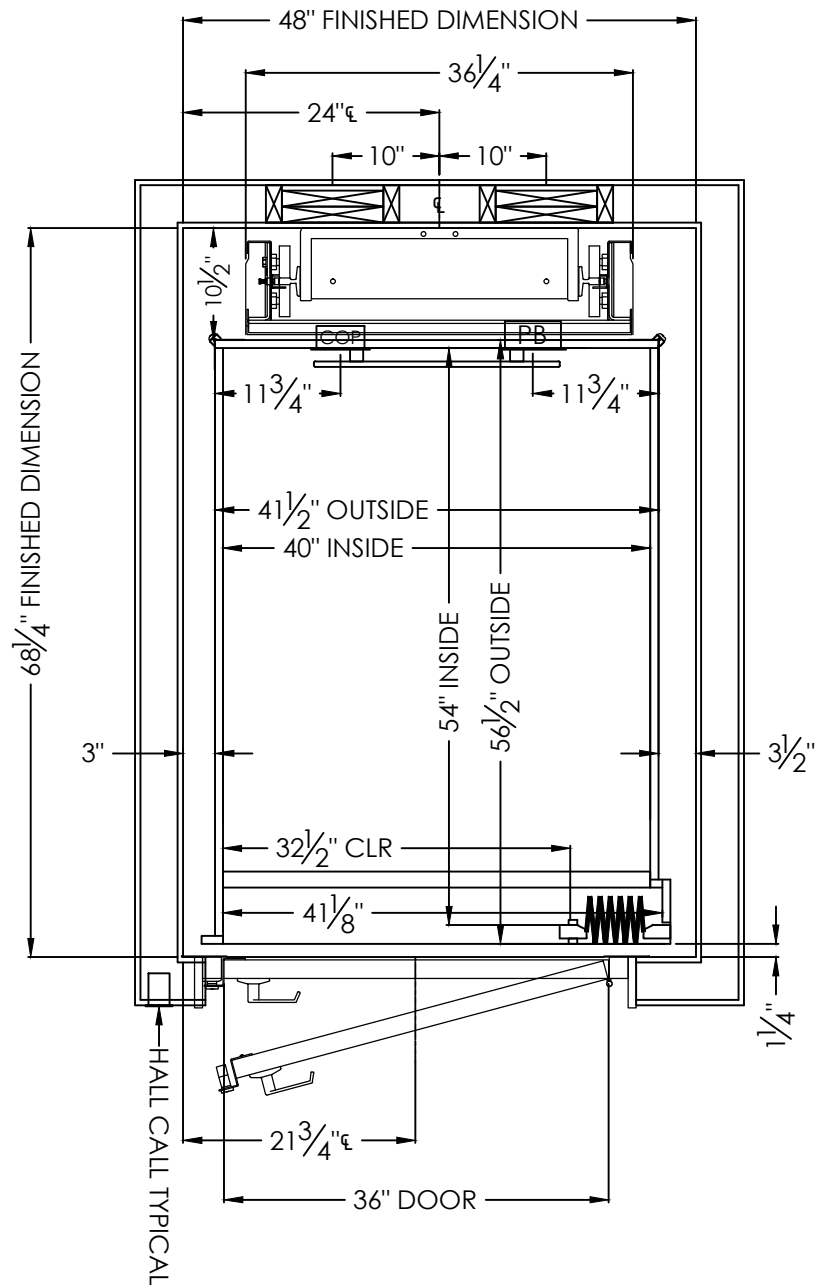


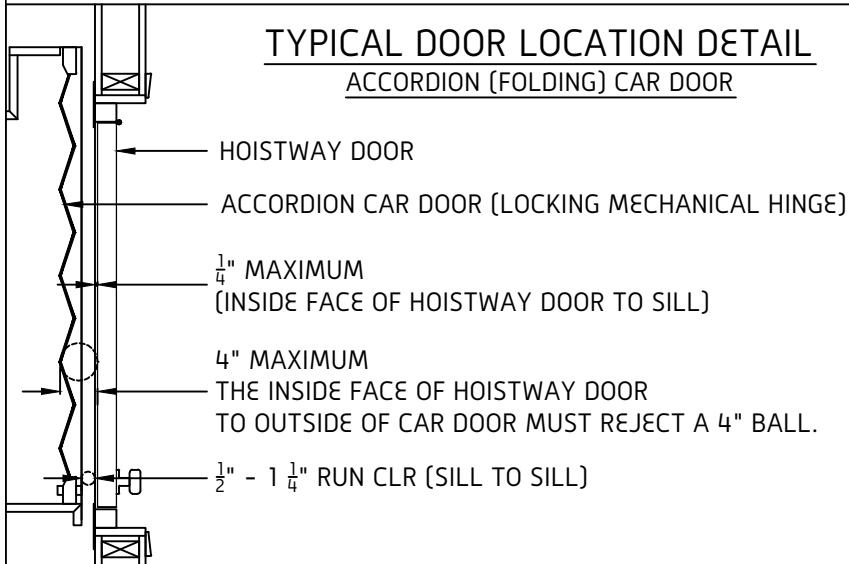
THIS DRAWING IS FOR  
PLANNING PURPOSES ONLY  
DO NOT USE FOR  
CONSTRUCTION




**NOTES:**

- CAR FLOORING AND FINISHINGS MUST NOT EXCEED 25 LBS
- IN ORDER TO MEET THE 3/4" AND 4" REQUIREMENTS, A MAXIMUM OF 1/4" HOISTWAY DOOR SETBACK IS ALLOWED, WHEN USING ACCORDION CAR DOOR(S).

**TYPICAL DOOR LOCATION DETAIL**  
**ACCORDION (FOLDING) CAR DOOR**



		SYMMETRY ELEVATING SOLUTIONS	
TITLE 54 X 40 SINGLE OPENING RF LH		SCALE NONE	
DRAWN BY	DATE 05/2019	DRAWING NO. RE039	REV R0
JOB INFORMATION THIS DRAWING IS FOR PLANNING PURPOSES ONLY, DO NOT USE FOR CONSTRUCTION			