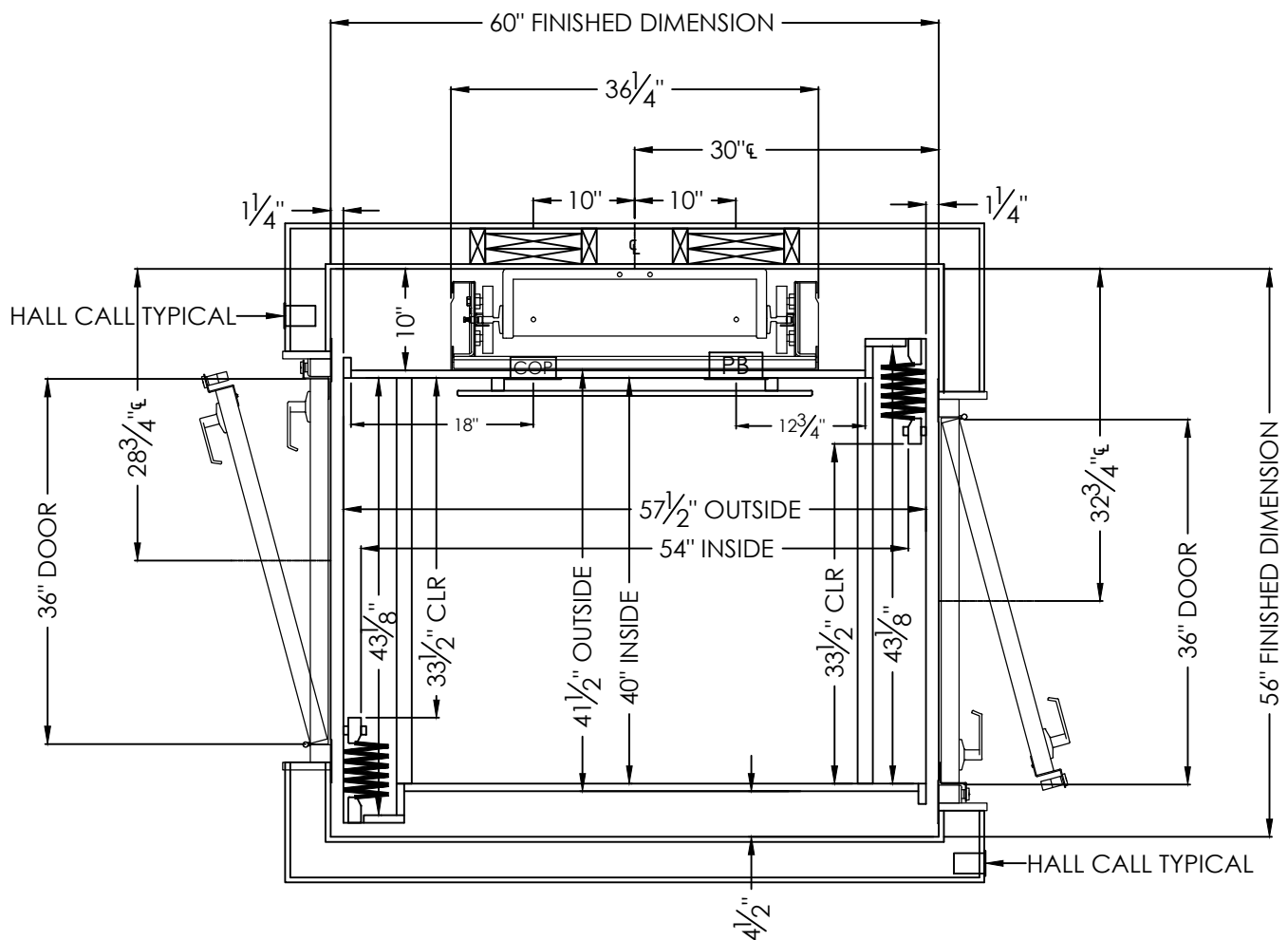


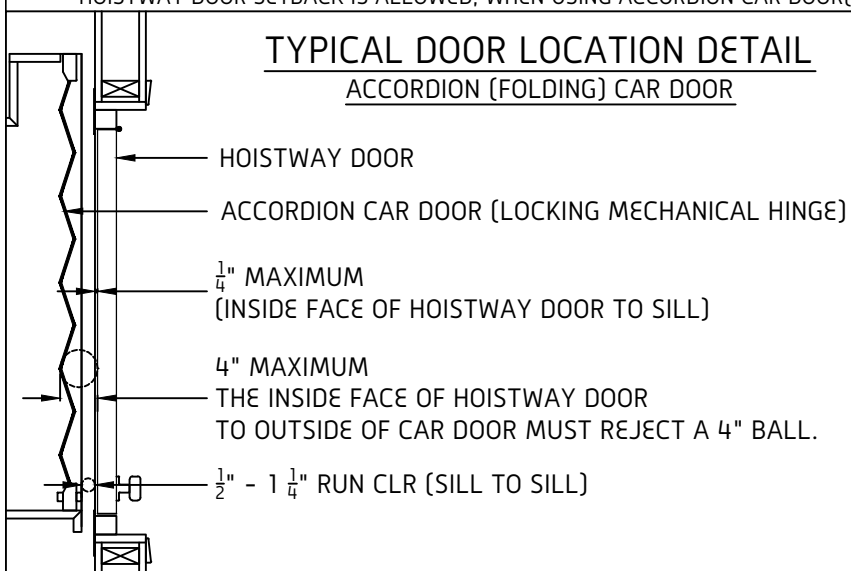
THIS DRAWING IS FOR
PLANNING PURPOSES ONLY
DO NOT USE FOR
CONSTRUCTION



NOTES:

- CAR FLOORING AND FINISHINGS MUST NOT EXCEED 25 LBS
- IN ORDER TO MEET THE 3/4" AND 4" REQUIREMENTS, A MAXIMUM OF 1/4" HOISTWAY DOOR SETBACK IS ALLOWED, WHEN USING ACCORDION CAR DOOR(S).

TYPICAL DOOR LOCATION DETAIL
ACCORDION (FOLDING) CAR DOOR



SYMMETRY ELEVATING
SOLUTIONS

TITLE
40 X 54 OPPOSITE OPENINGS LH LH

SCALE
NONE

DRAWN BY

DATE

05/2019

DRAWING NO.

RE025

REV

R0

JOB INFORMATION

THIS DRAWING IS FOR PLANNING PURPOSES ONLY,
DO NOT USE FOR CONSTRUCTION