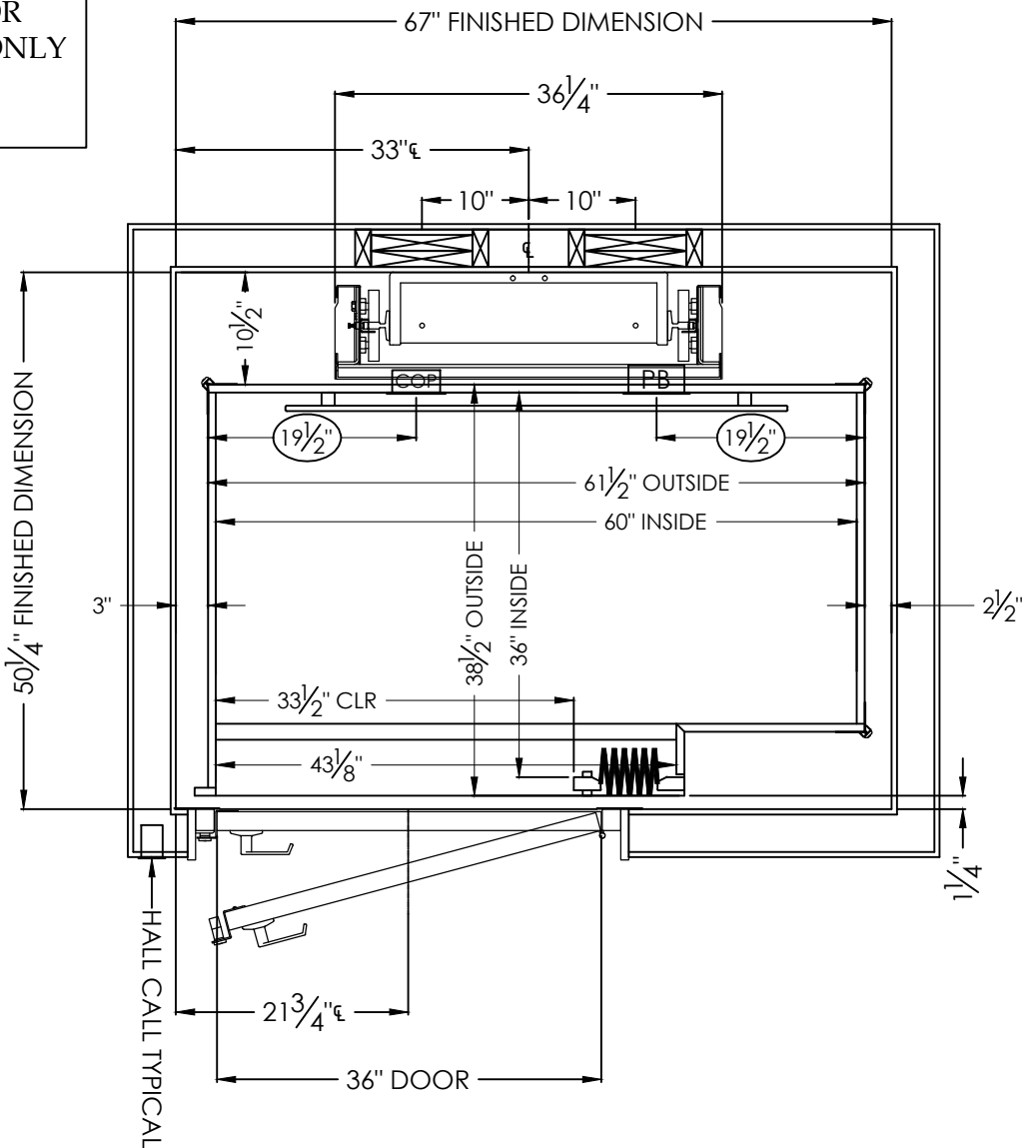


THIS DRAWING IS FOR
PLANNING PURPOSES ONLY
DO NOT USE FOR
CONSTRUCTION

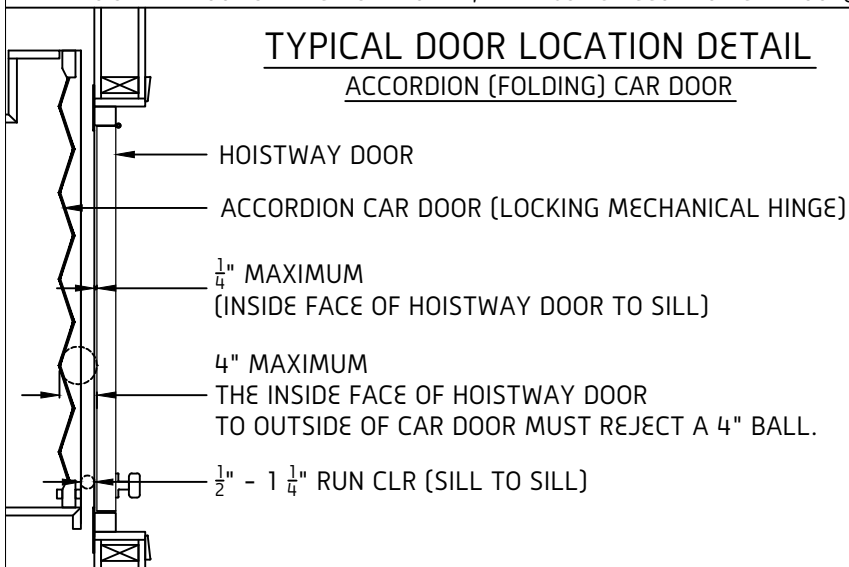


NOTES:

- CAR FLOORING AND FINISHINGS MUST NOT EXCEED 25 LBS
- IN ORDER TO MEET THE 3/4" AND 4" REQUIREMENTS, A MAXIMUM OF 1/4" HOISTWAY DOOR SETBACK IS ALLOWED, WHEN USING ACCORDION CAR DOOR(S).

TYPICAL DOOR LOCATION DETAIL

ACCORDION (FOLDING) CAR DOOR



SYMMETRY ELEVATING
SOLUTIONS

TITLE
36 X 60 SINGLE OPENING RF LH

SCALE
NONE

DRAWN BY

DATE	05/2019
------	---------

DRAWING NO.	RE017
-------------	-------

REV
R0

JOB INFORMATION	
-----------------	--

THIS DRAWING IS FOR PLANNING PURPOSES ONLY,
DO NOT USE FOR CONSTRUCTION