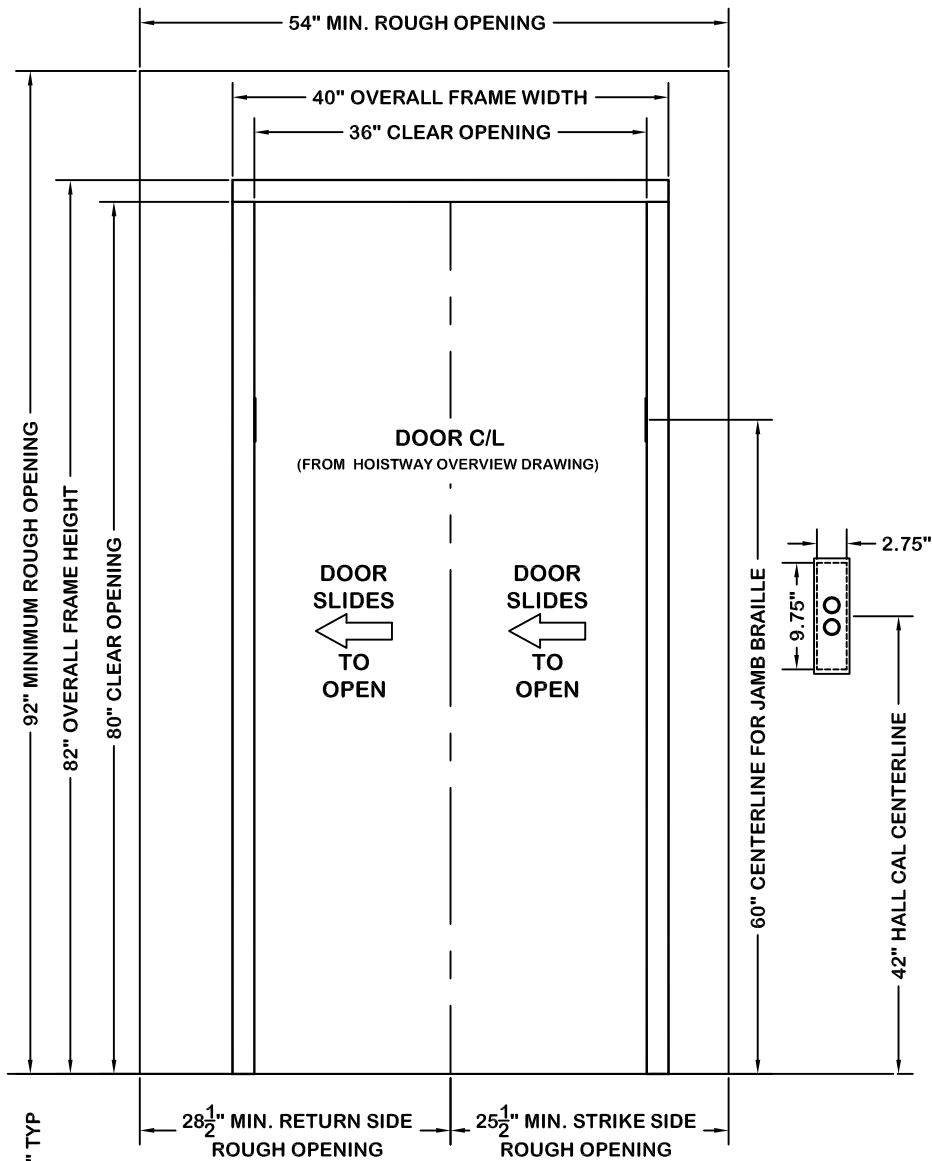
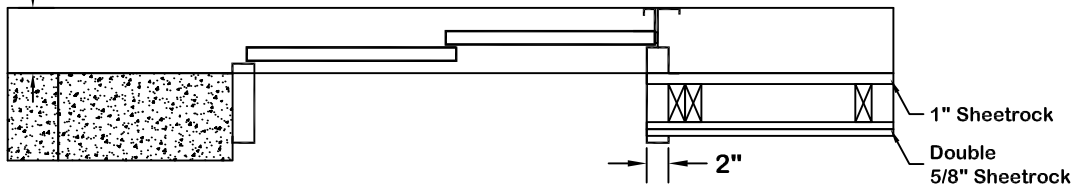


THIS DRAWING IS FOR
PLANNING PURPOSES ONLY
DO NOT USE FOR
CONSTRUCTION

RIGHT HAND ENTRANCE FRAME

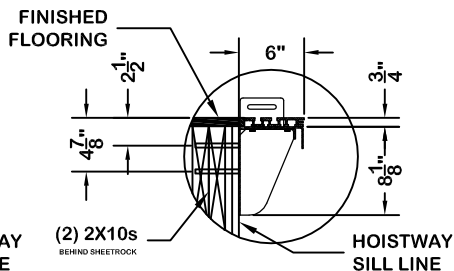
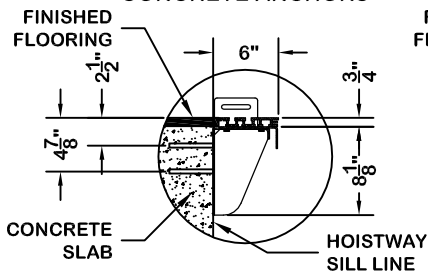


HOISTWAY SILL LINE



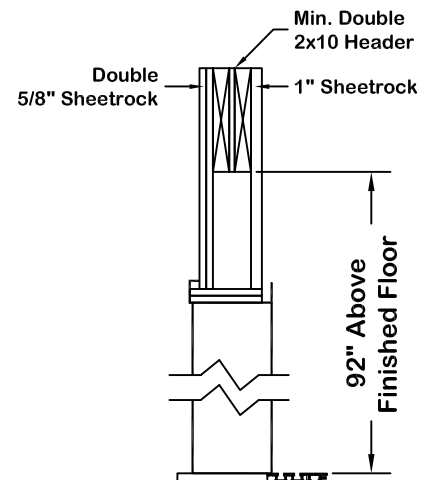
MASONRY
CONSTRUCTION
SILL ANCHORS:
(6) 3/8" x 3" WEDGE
CONCRETE ANCHORS

WOOD/DRYWALL
CONSTRUCTION
SILL ANCHORS:
(6) 3/8" x 4" LAG BOLTS, ZINC



Notes:

1. Hoistway entrances are manufactured in accordance with 1 1/2 Hr. fire rated construction.
2. Hoistway walls to have a fire endurance rating not less than required by Section 110 (1996) or Section 2.1 (2000+) ASME A17.1 Elevator Safety Code.
3. Furnishing, installing, and maintaining the required fire rating of elevator hoistway walls, including the penetration of the fire wall by elevator fixture boxes, is not the responsibility of the elevator contractor or manufacturer.
4. The interface of the hoistway wall with the hoistway entrance shall be in strict compliance with the entrance manufacturer's requirements in order to retain fire rating and label validity of the elevator hoistway doors and frame.
5. Hoistway walls at entrances should be left open for the full width of the shaft until after door sills and frames are set in place. If this is not feasible, leave a 54"W x 92"H rough opening.
6. Filling and grouting by GC.



SYMMETRY ELEVATING SOLUTIONS			
TITLE			SCALE
ELEVATION - RIGHT-HAND ENTRANCE DETAIL			NONE
DRAWN BY	ORIGINAL DATE	DRAWING NO.	REV
TKG	2/19/19	LUL/A21	R0
JOB INFORMATION			