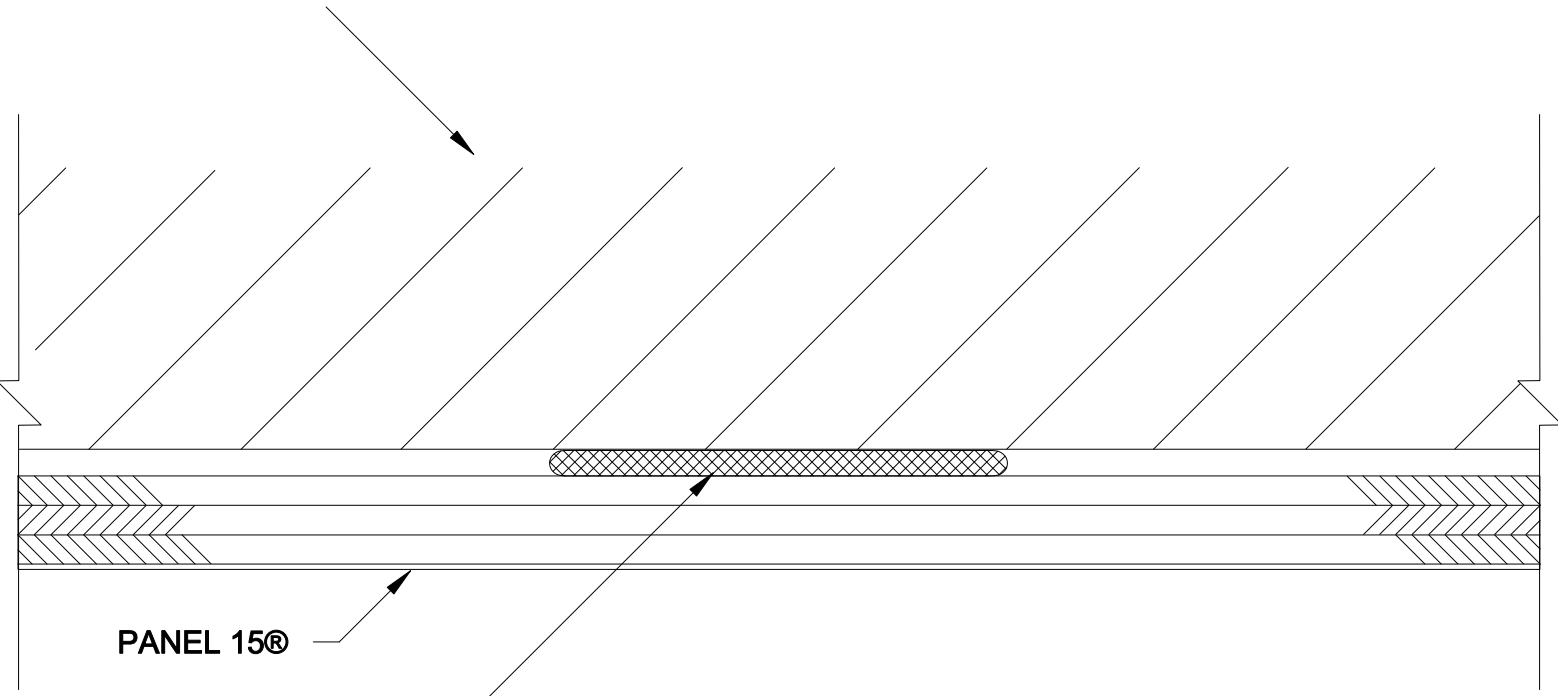


NAILABLE SUBSTRATE
(BY OTHERS)

NOTE:
FOR NON-NAILABLE SUBSTRATES,
FASTENERS MUST BE USED ONLY
AT STUD FRAMEWORK LOCATIONS.



PANEL 15®

APPROVED
CONSTRUCTION
ADHESIVE
(BY OTHERS)

NOTE:
IF MOISTURE BARRIER IS PRESENT,
SPECIAL INSTRUCTIONS APPLY,
REFER TO INSTALLATION GUIDELINES.

6

INTERMEDIATE CONNECTION