

NOTES: UNLESS OTHERWISE SPECIFIED

1. DIMENSIONS ARE IN INCHES (mm).

Features:

1. Clear Tempered Safety Glass
2. Stainless Steel Flush Mount Hinge
3. Stainless Steel Door Frame
4. Latch, Compression, Overcenter Lever - Chrome Plated

Options Shown:

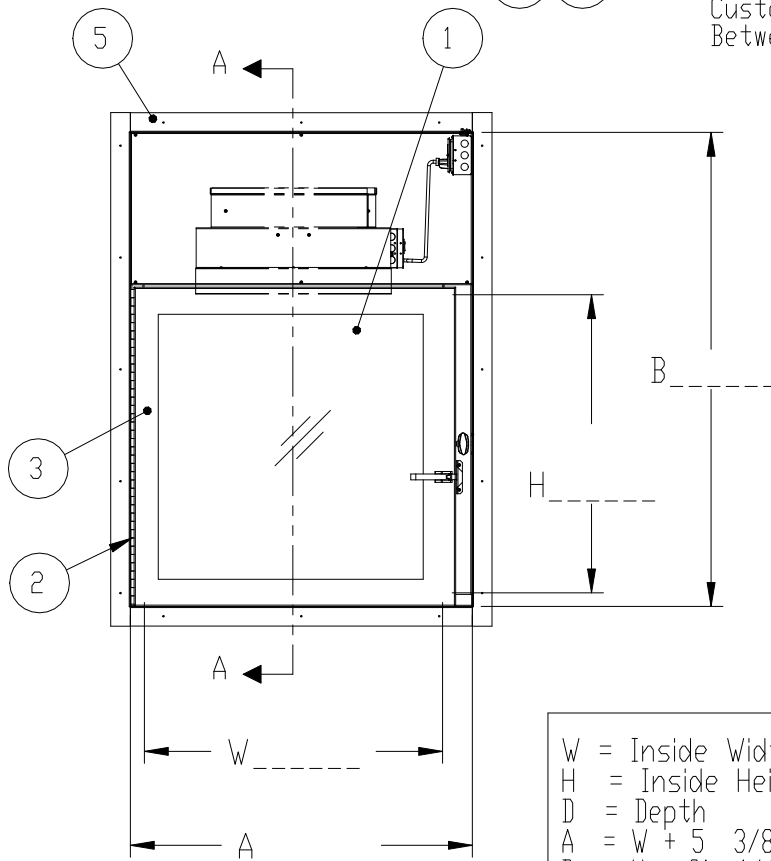
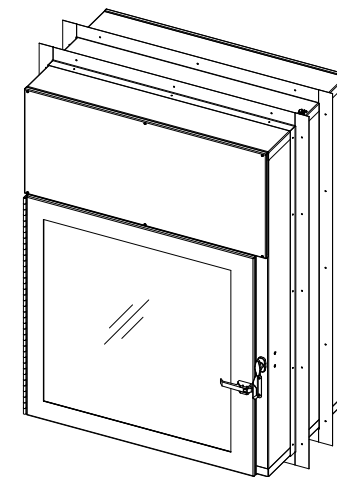
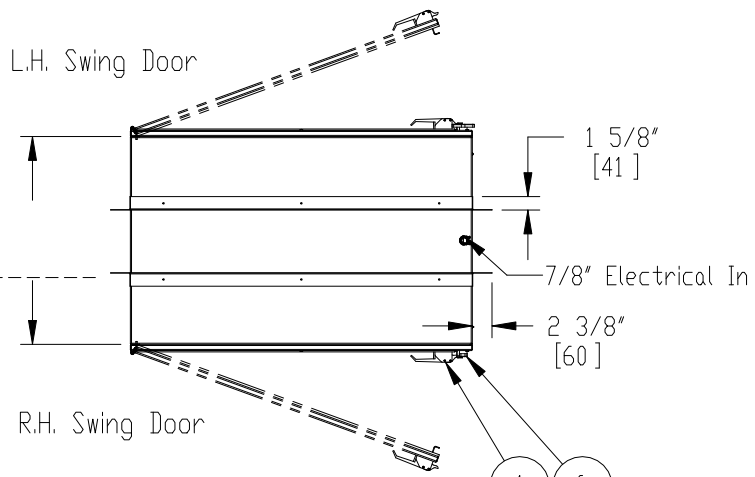
5. 8 Pc. Stainless Steel Mounting Frame
6. Interlock Handle, T, Non-Locking Satin Chrome

Notes:

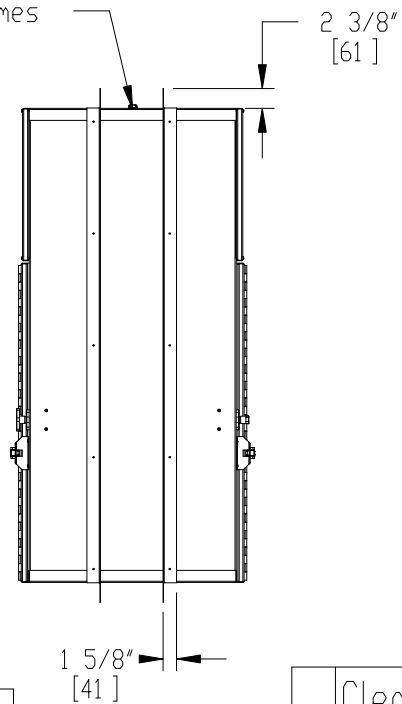
1. Wall Cutout is  $([A] + \frac{1}{2}'' \times [B] + \frac{1}{2}'')$
2. Material: Stainless Steel, Type 304, #4 Finish
3. Electrical Requirements: 120V, 60Hz, 1.2A

Pass Thru Operation - One Hand :

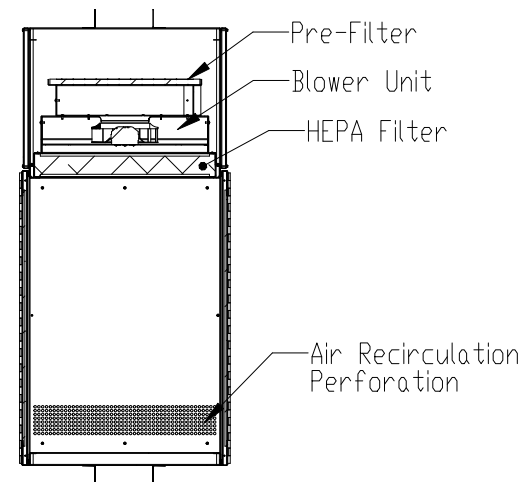
Turn Interlock Handle (6) to Operate Interlock  
Pull Door Latch (4) to open door



Customer Wall Between Frames



SECTION A-A  
SCALE 1 : 26



W = Inside Width  
H = Inside Height  
D = Depth  
A = W + 5 3/8"  
B = H + 21 1/4"

Note:  
Interlocking and non-interlocking units have the same exterior dimensions unless noted

© COPYRIGHT 2010 CLEAN AIR PRODUCTS	Clean Air PRODUCTS		8605 WYOMING AVENUE NORTH • MINNEAPOLIS, MN 55445	
			800-423-9728 • ph: 763-425-9122 • fax: 763-425-2004	
			www.cleanairproducts.com	
DESCRIPTION: Pass Thru - Wall Mount HEPA Filter, Stainless Steel -18WHF-SST- Wx Hx				
QUOTE NO.				
DO NOT SCALE	DATE DRAWN 11/15/2010	QUOTE FORM 013169	REV 1	SHEET 1 of 2