

DW-2000R - HORIZONTAL INSTALLATION

REVISION

1	10/27/23

AR-PJ-01-DW2H	DW-2000R PANEL PROFILE
AR-PJ-02-DW2H	DW-2000R HORIZONTAL PANEL JOINT
AR-PJ-03-DW2H	DW-2000R VERTICAL PANEL JOINT
AR-PJ-04-DW2H	DW-2000R VERTICAL PANEL JOINT
AR-PJ-05-DW2H	DW-2000R ALTERNATE PANEL PROFILE 12"
AR-PJ-06-DW2H	DW-2000R ALTERNATE PANEL PROFILE 24"
AR-PJ-07-DW2H	DW-2000R PANEL INTEGRATION
AR-PJ-08-DW2H	DW-2000R TO DW-4000 INTEGRATION
AR-PJ-09-DW2H	DW-2000R TO DW-2000 INTEGRATION
AR-BS-01-DW2H	BASE DETAIL - FLUSH
AR-BS-02-DW2H	BASE DETAIL - OVERHANG
AR-BS-03-DW2H	BASE DETAIL W/ EXTRUSION (FLUSH)
AR-BS-04-DW2H	BASE DETAIL W/ EXTRUSION (OVERHANG)
AR-OC-01-DW2H	TRANSVERSE BENT CORNER
AR-OC-02-DW2H	OUTSIDE CORNER WITH 2 PIECE EXTRUSION
AR-IC-01-DW2H	INSIDE CORNER WITH 2 PIECE EXTRUSION
AR-FO-01-DW2H	HEAD ON PANEL JOINT
AR-FO-02-DW2H	FIELD CUT HEAD
AR-FO-03-DW2H	JAMB WITH FLASHING
AR-FO-04-DW2H	SILL WITH FLASHING
AR-FO-05-DW2H	TRIM AT FRAMED OPENING
AR-FO-06-DW2H	TRIM LAP W/ FLEXWRAP AT FRAMED OPENING

INDEX SHEET 1

DETAIL #: XX-XX-XX-DW2H

RELEASE: 2023

REGION: NORTH AMERICA

www.kingspanpanels.com



BENCHMARK™

DW-2000R - HORIZONTAL INSTALLATION

REVISION

1	10/27/23

AR-SF-01-DW2H	WALL TO SOFFIT
AR-SF-02-DW2H	WALL TO FIELD CUT SOFFIT
AR-SF-03-DW2H	FIELD CUT SOFFIT AND FASCIA
AR-PR-01-DW2H	PARAPET W/ PANEL JOINT
AR-PR-02-DW2H	PARAPET W/ FLUSH TRIM
AR-PR-03-DW2H	PARAPET W/ FLUSH EXTRUSION
AR-SJ-01-DW2H	2.5", 3",4" STAGGERED PANEL JOINT
AR-SJ-02-DW2H	2.5", 3",4" STAGGERED PANEL JOINT
AR-TL-01-DW2H	BEAM PENETRATION
AR-TL-02-DW2H	WALL PENETRATION SECTION
AR-TL-03-DW2H	PIPE PENETRATION
AR-TL-04-DW2H	2.5" EXTRUSIONS
AR-TL-05-DW2H	2.5" EXTRUSIONS
AR-TL-06-DW2H	3" EXTRUSIONS
AR-TL-07-DW2H	3" EXTRUSIONS
AR-TL-08-DW2H	4" EXTRUSIONS
AR-TL-09-DW2H	4" EXTRUSIONS
AR-TL-10-DW2H	EXTRUSION LAP STRIPS
AR-TL-11-DW2H	TRIM END LAP
AR-TL-12-DW2H	TRIM LAP WITH HEM
AR-TL-13-DW2H	MENDING PLATE "SHINGLE" LAP
AR-TL-14-DW2H	COPING LAP WITH LAP STRIP
AR-TL-15-DW2H	ACCESSORIES

INDEX SHEET 2

DETAIL #: XX-XX-XX-DW2H

RELEASE: 2023

REGION: NORTH AMERICA

www.kingspanpanels.com



BENCHMARK™

DW-2000R - HORIZONTAL INSTALLATION

REVISION

0	10/27/23

DISCLAIMERS:

THESE DETAILS ARE PROVIDED AS A GUIDELINE FOR PROPER PANEL AND ASSOCIATED COMPONENT INSTALLATION, AND ARE BASED ON INDUSTRY ACCEPTED PRACTICES.

LOCATION OF VAPOR BARRIERS AND ASSOCIATED SEALANTS IN THESE DETAILS ARE BASED ON TYPICAL DESIGN PRACTICES FOR MOST U.S. CLIMACTIC ZONES. (THE PRIMARY VAPOR BARRIER IS PLACED ON THE "WARM" SIDE IN WINTER).

CONTACT KINGSPAN TECHNICAL SERVICES FOR SPECIFIC PROJECT FASTENING REQUIREMENTS

EXTRUSION SHAPES / ENGAGEMENT MAY VARY FROM THOSE SHOWN.

PROJECTS LOCATED IN AREAS SUBJECT TO EXTREME COLD AND/OR HIGH SNOW LOADS MAY REQUIRE MODIFICATIONS TO THESE DETAILS - CONTACT KINGSPAN TECHNICAL SERVICES FOR SPECIFIC PROJECT RECOMMENDATIONS.

ALL STRUCTURAL SUPPORTS ARE NOT BY KINGSPAN AND ARE SHOWN FOR CLARIFICATION PURPOSES ONLY.

TO ENSURE YOU ARE VIEWING THE MOST RECENT AND ACCURATE PRODUCT INFORMATION, PLEASE VISIT WWW.KINGSPANPANELS.COM

CARE HAS BEEN TAKEN TO ENSURE THAT THE CONTENTS OF THIS PUBLICATION ARE ACCURATE, BUT KINGSPAN AND ITS SUBSIDIARY COMPANIES DO NOT ACCEPT RESPONSIBILITY FOR ERRORS OR FOR INFORMATION THAT IS FOUND TO BE MISLEADING. SUGGESTIONS FOR, OR DESCRIPTION OF, THE END USE OR APPLICATION OF PRODUCTS OR METHODS OF WORKING ARE FOR INFORMATION ONLY AND KINGSPAN LIMITED AND ITS SUBSIDIARIES ACCEPT NO LIABILITY IN RESPECT THEREOF.

ARCHITECTURAL DISCLAIMER

DETAIL #: AR-DS-01-DW2H

RELEASE: 2023

REGION: NORTH AMERICA

www.kingspanpanels.com



BENCHMARK™

DW-2000R - HORIZONTAL INSTALLATION

CORE DEPTHS:

2.5", 3", 4"

STEEL GAUGES:

EXTERIOR: 22

INTERIOR: 24, 22

MODULE WIDTH:

QUADCORE: 12", 16", 20", 24"

ISO LAMINATED BOARD: 24" (FM APPROVAL)

REVEAL: N/A

PANEL ORIENTATION: HORIZONTAL

EMBOSSING:

EXTERIOR: NON-EMBOSSSED, STUCCO

INTERIOR: NON-EMBOSSSED, STUCCO

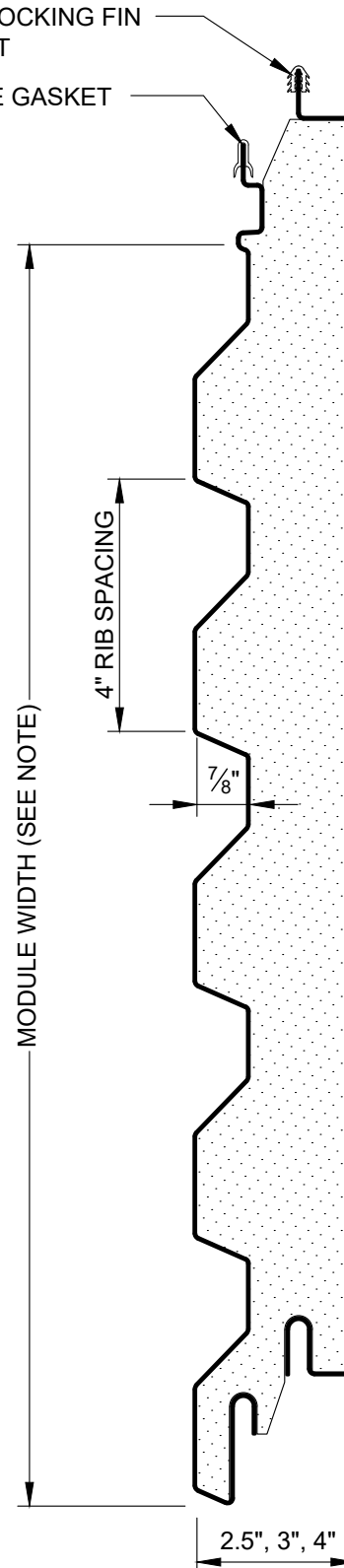
LENGTHS:

MINIMUM: 8'-0" (NON-FM: 2'-0")

MAXIMUM: 24'-0"

INTERLOCKING FIN
GASKET

WEDGE GASKET



REVISION	
REVISION #	DATE
1	10/27/23

PANEL PROFILE

DETAIL #: AR-PJ-01-DW2H

RELEASE: 2023

REGION: NORTH AMERICA

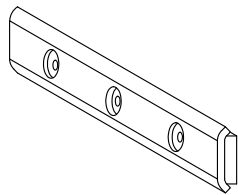
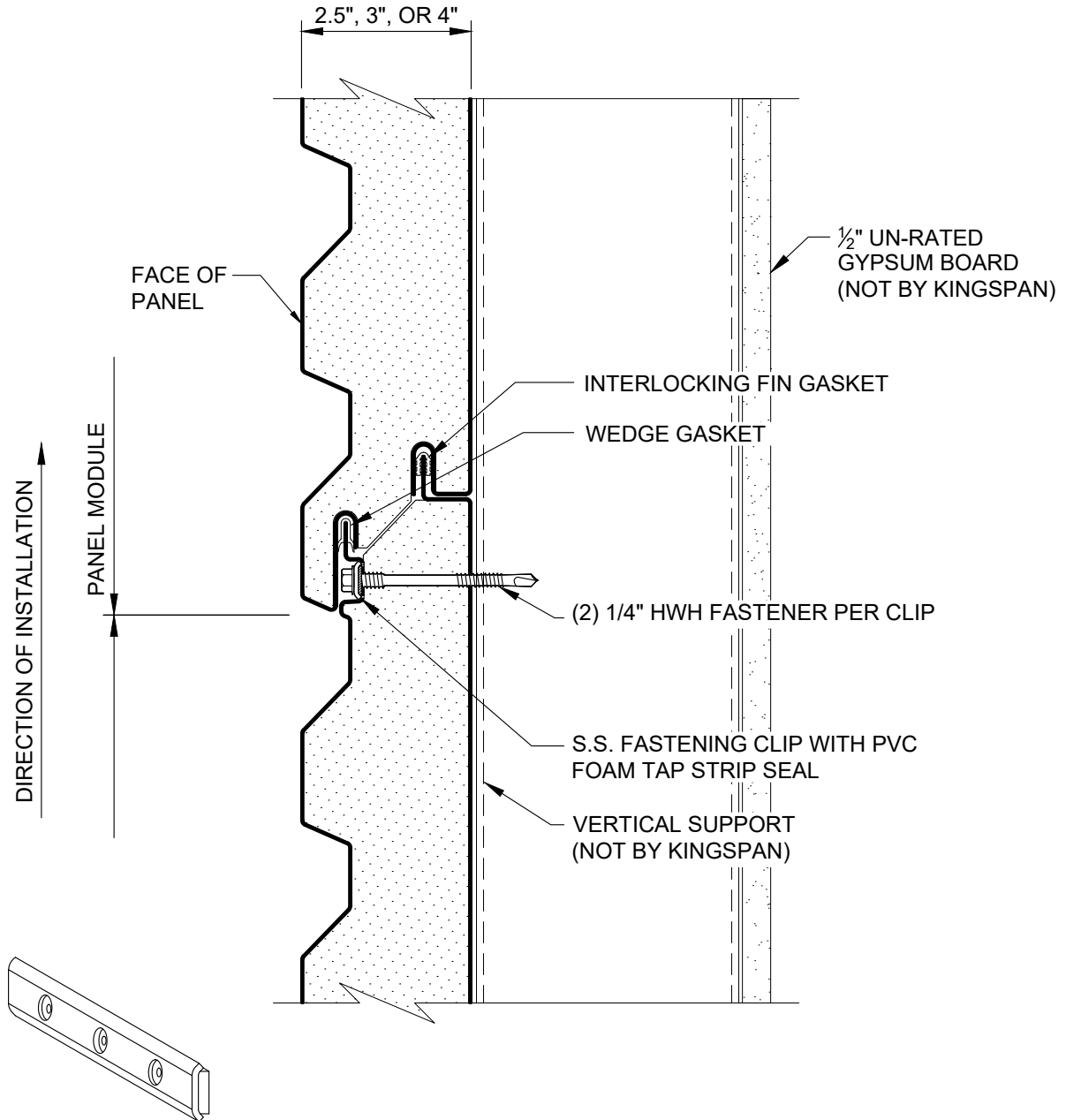
www.kingspanpanels.com



BENCHMARK™

DW-2000R - HORIZONTAL INSTALLATION

CONTACT KINGSPAN TECHNICAL SERVICES FOR SPECIFIC PROJECT FASTENING REQUIREMENTS



FASTENING CLIP

REVISION	
REVISION #	DATE
1	10/27/23

HORIZONTAL
PANEL JOINT

DETAIL #: AR-PJ-02-DW2H

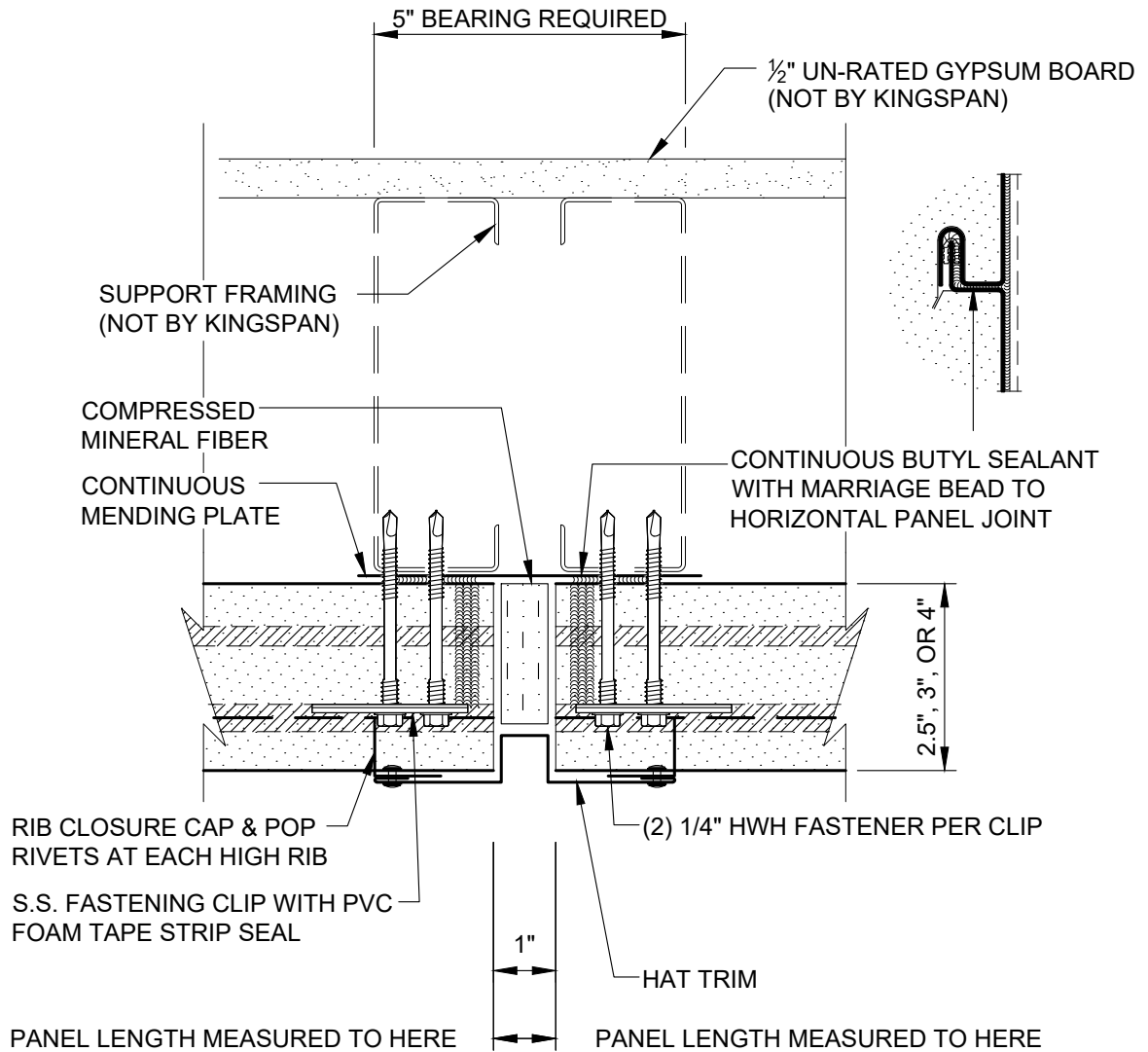
RELEASE: 2023

REGION: NORTH AMERICA

www.kingspanpanels.com

 **BENCHMARK™**

DW-2000R - HORIZONTAL INSTALLATION



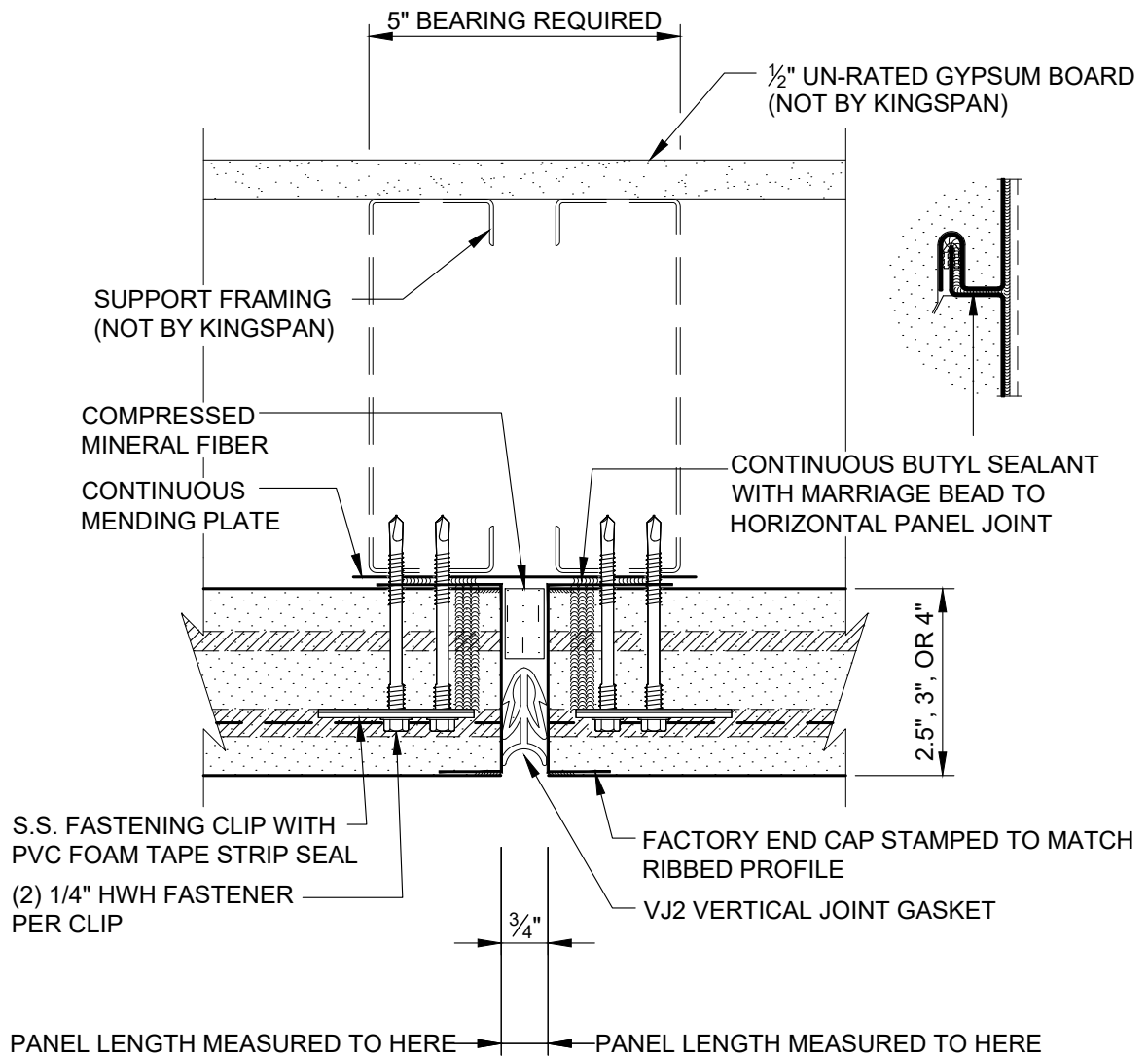
REVISION	
REVISION #	DATE
1	10/27/23

VERTICAL PANEL
JOINT

DETAIL #: AR-PJ-03-DW2H
RELEASE: 2023
REGION: NORTH AMERICA
www.kingspanpanels.com

 **BENCHMARK™**

DW-2000R - HORIZONTAL INSTALLATION



REVISION	
REVISION #	DATE
1	10/27/23

VERTICAL PANEL
JOINT

DETAIL #: AR-PJ-04-DW2H

RELEASE: 2023

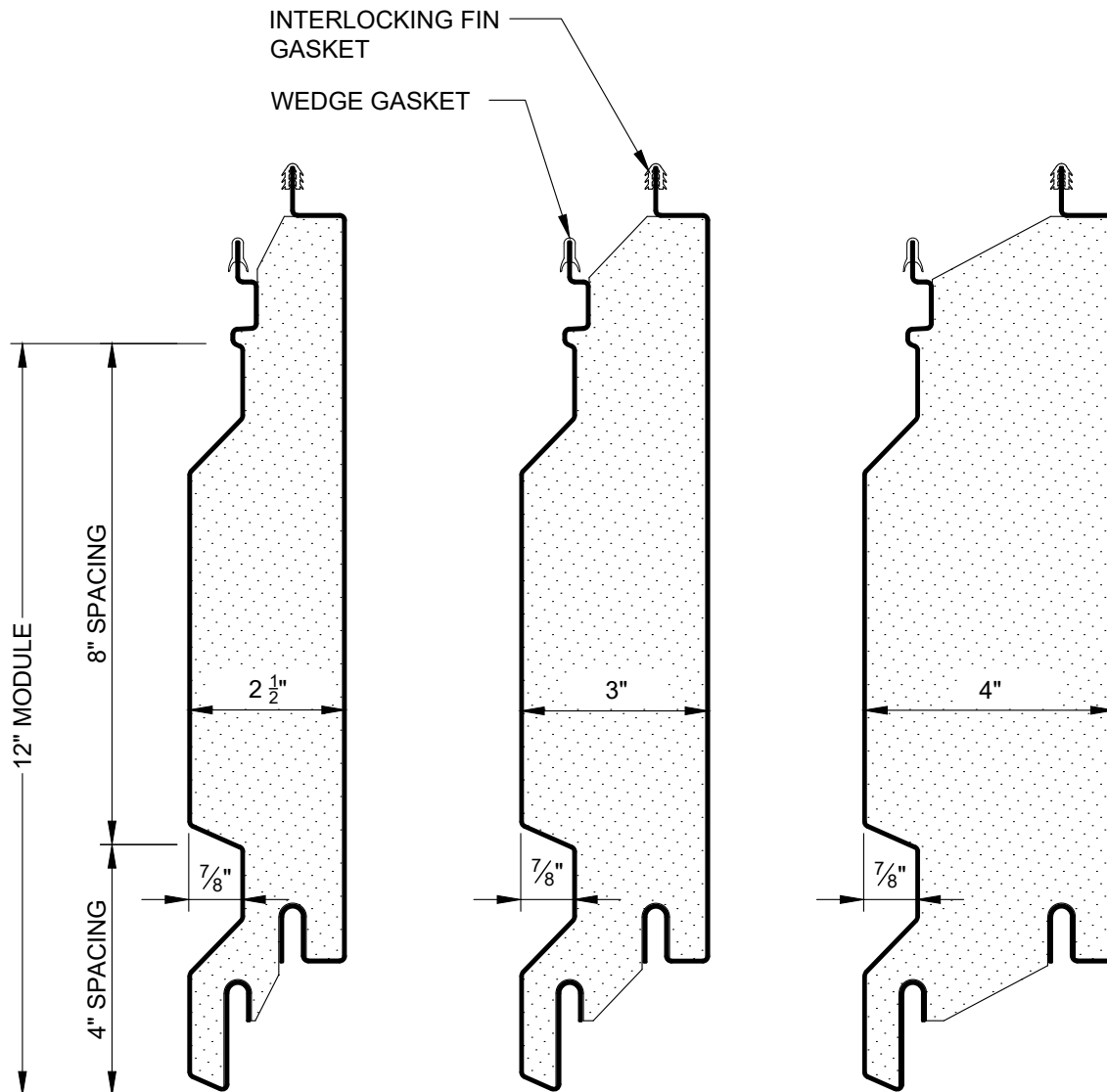
REGION: NORTH AMERICA

www.kingspanpanels.com



BENCHMARK™

DW-2000R - HORIZONTAL INSTALLATION



DESIGNWALL 2000R ALTERNATE "459" PROFILES

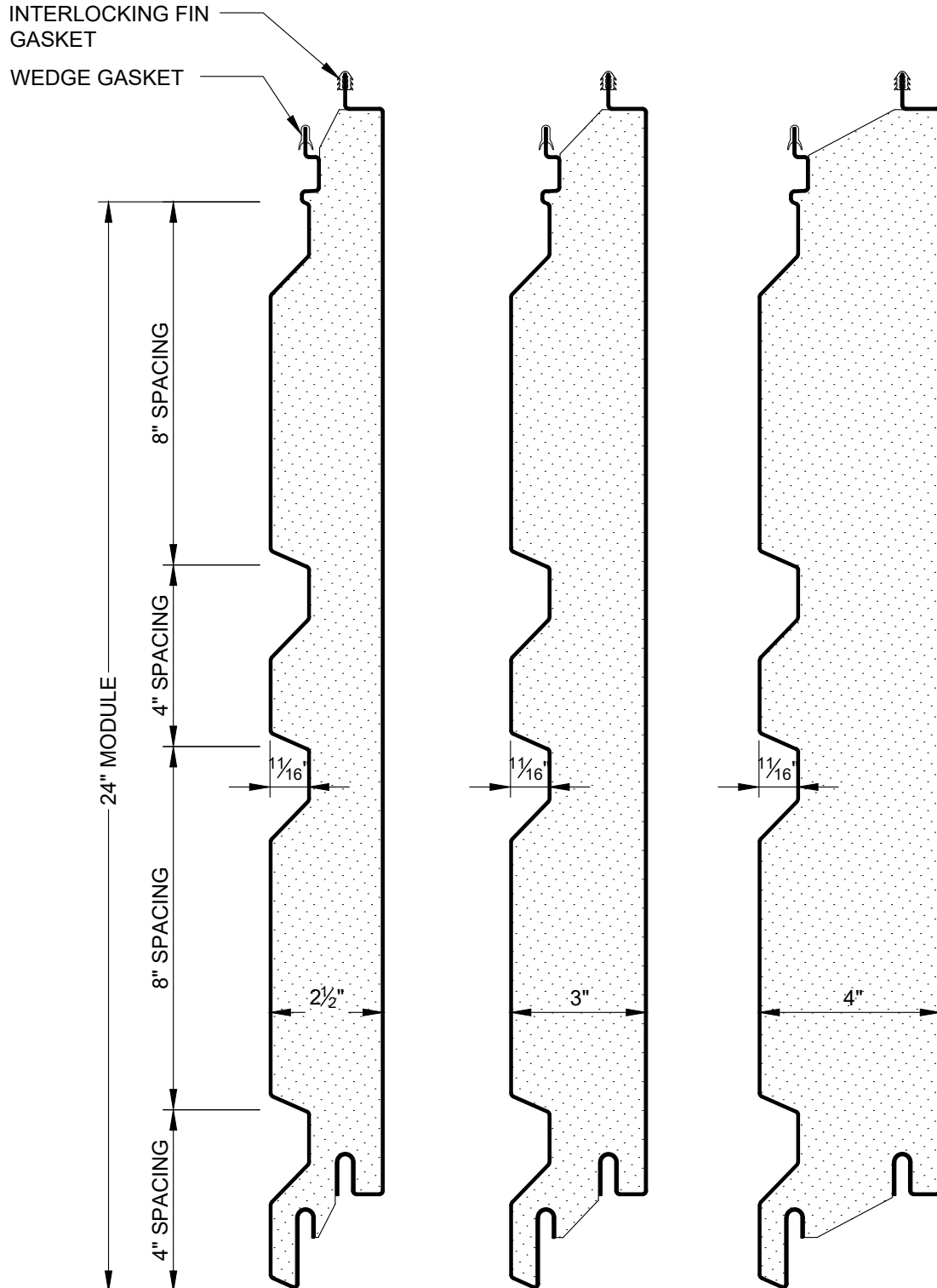
REVISION	
REVISION #	DATE
1	10/27/23

ALTERNATE PANEL
PROFILE 12"

DETAIL #: AR-PJ-05-DW2H
RELEASE: 2023
REGION: NORTH AMERICA
www.kingspanpanels.com

 **BENCHMARK™**

DW-2000R - HORIZONTAL INSTALLATION



DESIGNWALL 2000R ALTERNATE "459" PROFILES

NOT TO SCALE

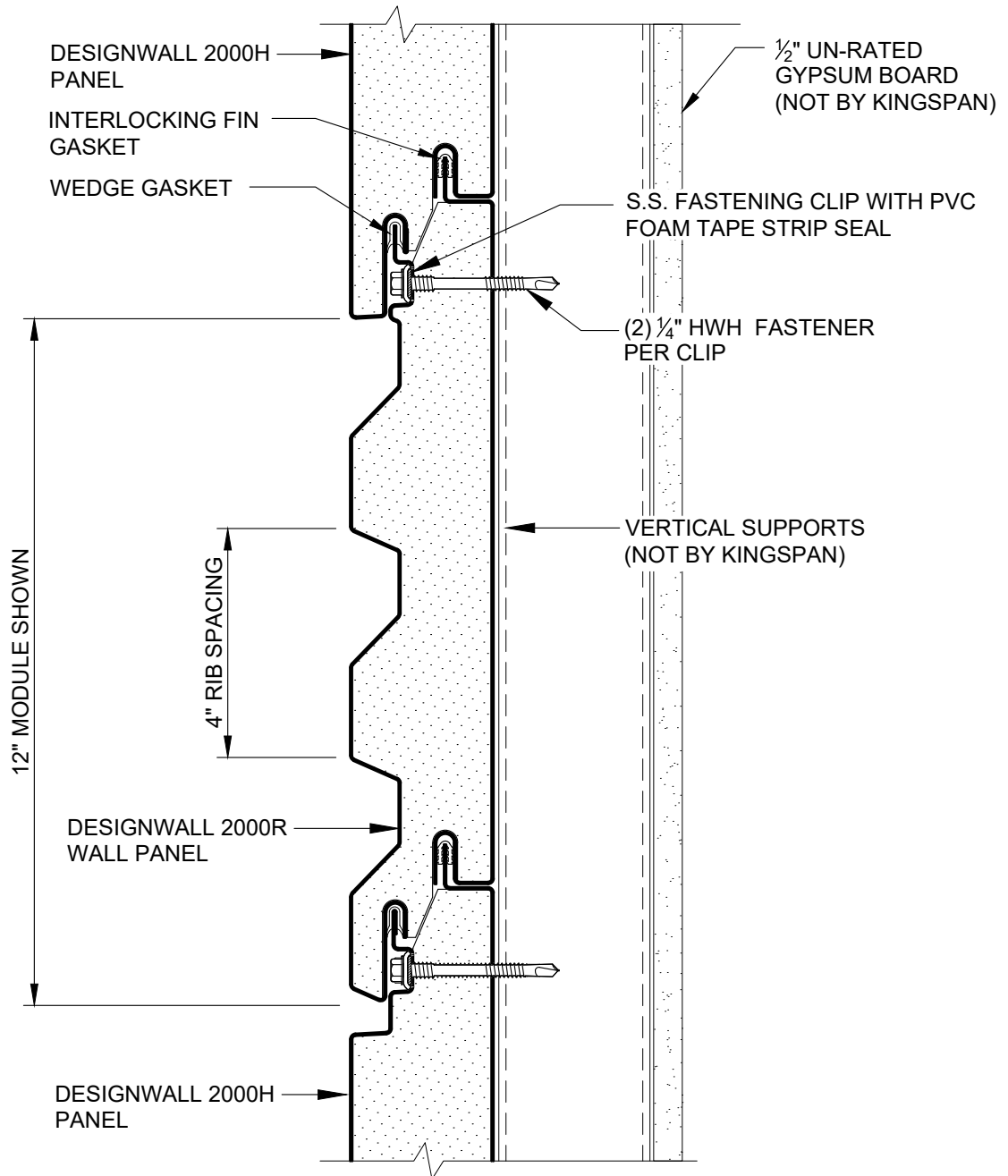
REVISION	
REVISION #	DATE
1	10/27/23

ALTERNATE PANEL
PROFILE 24"

DETAIL #: AR-PJ-06-DW2H
RELEASE: 2023
REGION: NORTH AMERICA
www.kingspanpanels.com

 **BENCHMARK™**

DW-2000R - HORIZONTAL INSTALLATION



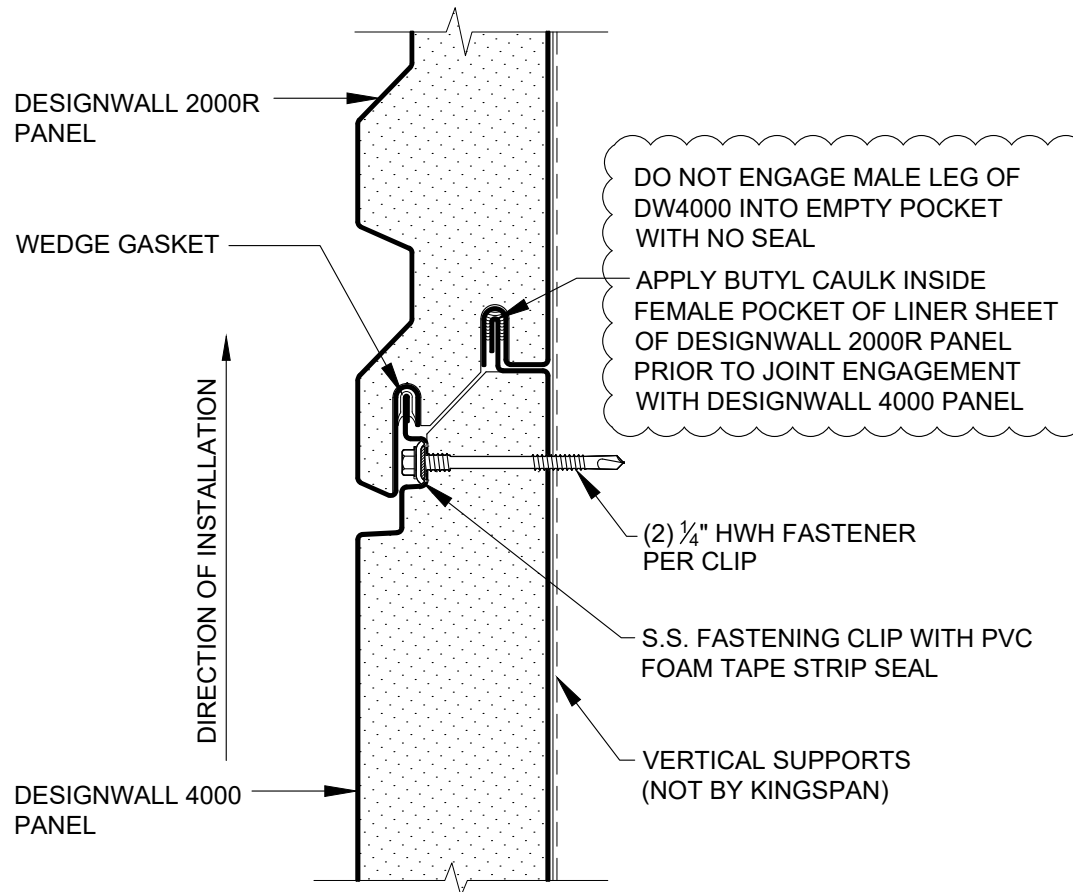
REVISION	
REVISION #	DATE
1	10/27/23

PANEL
INTEGRATION

DETAIL #: AR-PJ-07-DW2H
RELEASE: 2023
REGION: NORTH AMERICA
www.kingspanpanels.com

 **BENCHMARK™**

DW-2000R - HORIZONTAL INSTALLATION



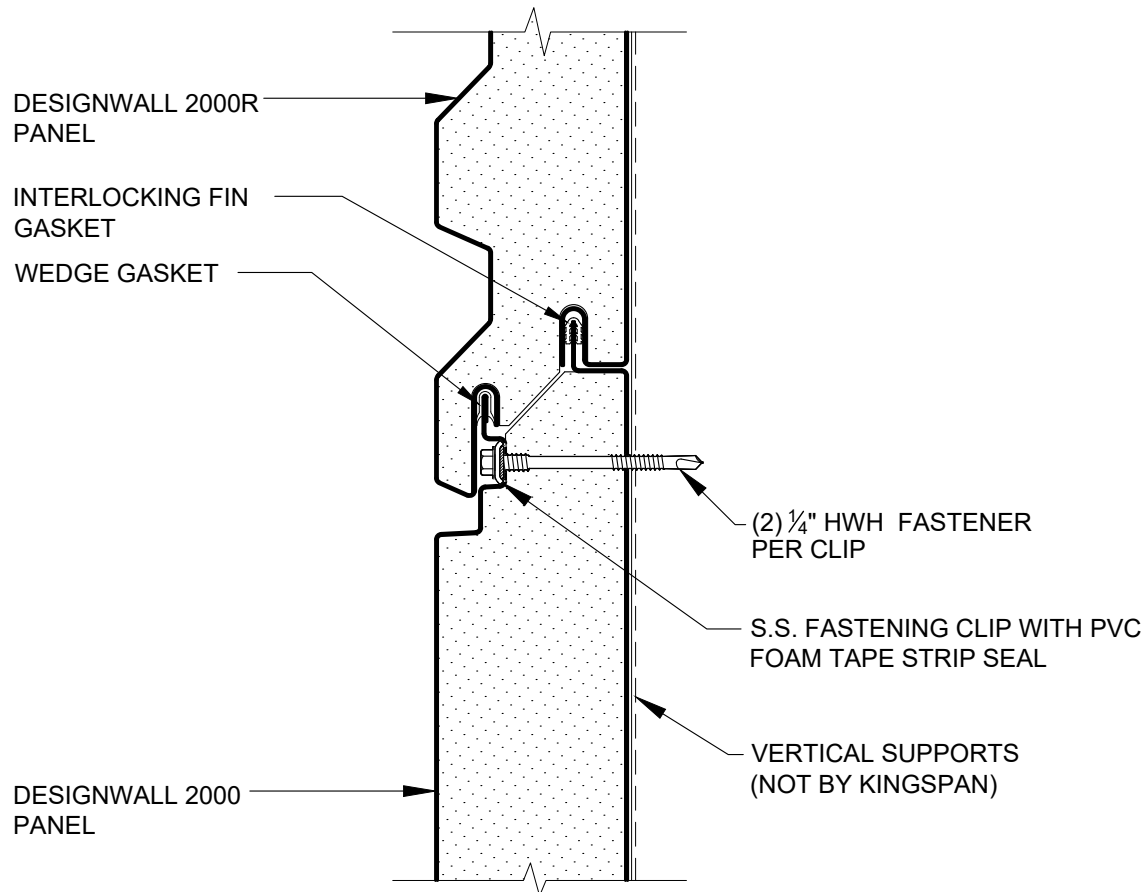
REVISION	
REVISION #	DATE
1	10/27/23

DW200R - DW4000
INTEGRATION

DETAIL #: AR-PJ-08-DW2H
RELEASE: 2023
REGION: NORTH AMERICA
www.kingspanpanels.com

 **BENCHMARK™**

DW-2000R - HORIZONTAL INSTALLATION



REVISION	
REVISION #	DATE
1	10/27/23

DW2000R - DW2000
INTEGRATION

DETAIL #: AR-PJ-09-DW2H

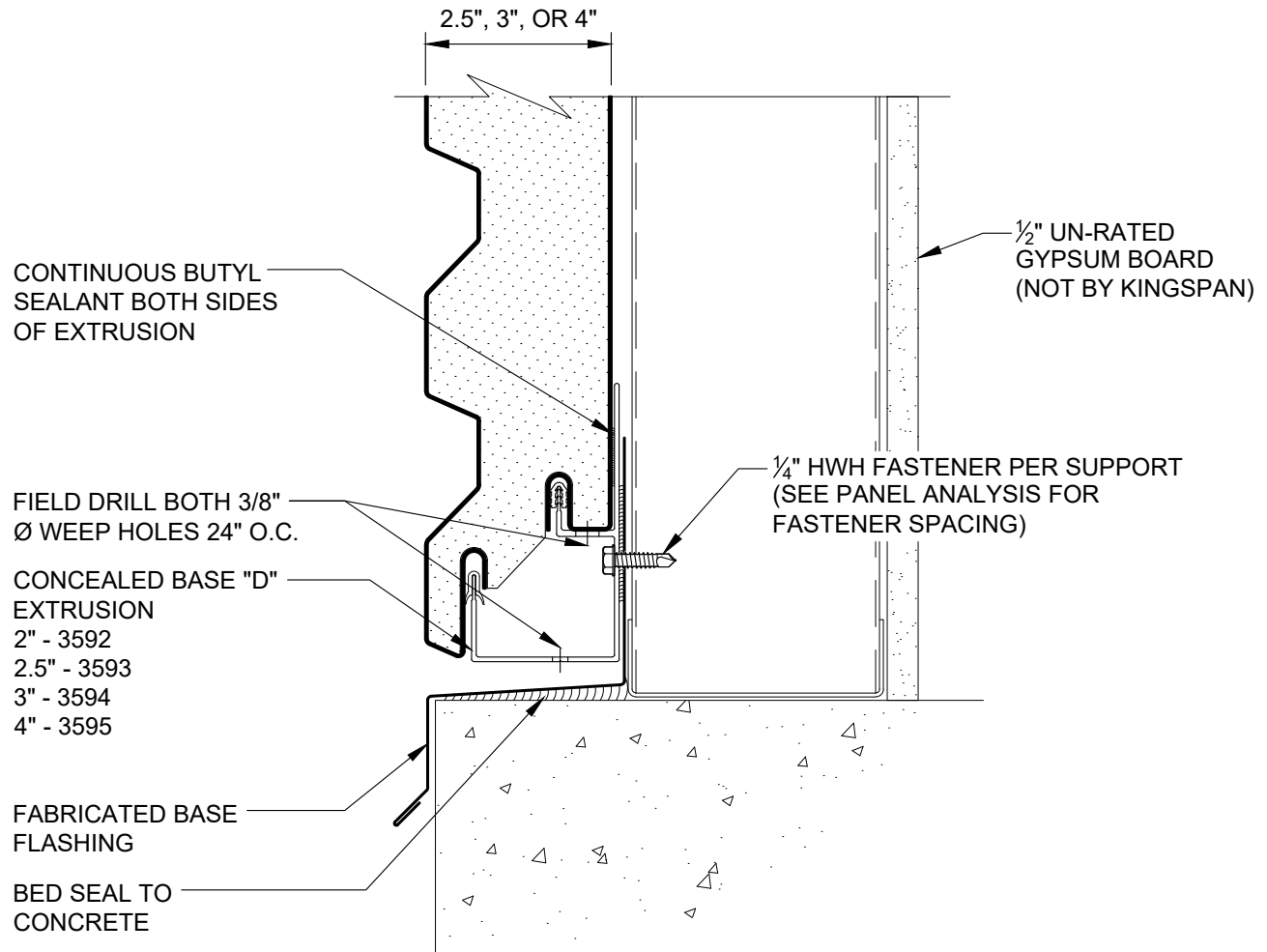
RELEASE: 2023

REGION: NORTH AMERICA

www.kingspanpanels.com

 **BENCHMARK™**

DW-2000R - HORIZONTAL INSTALLATION



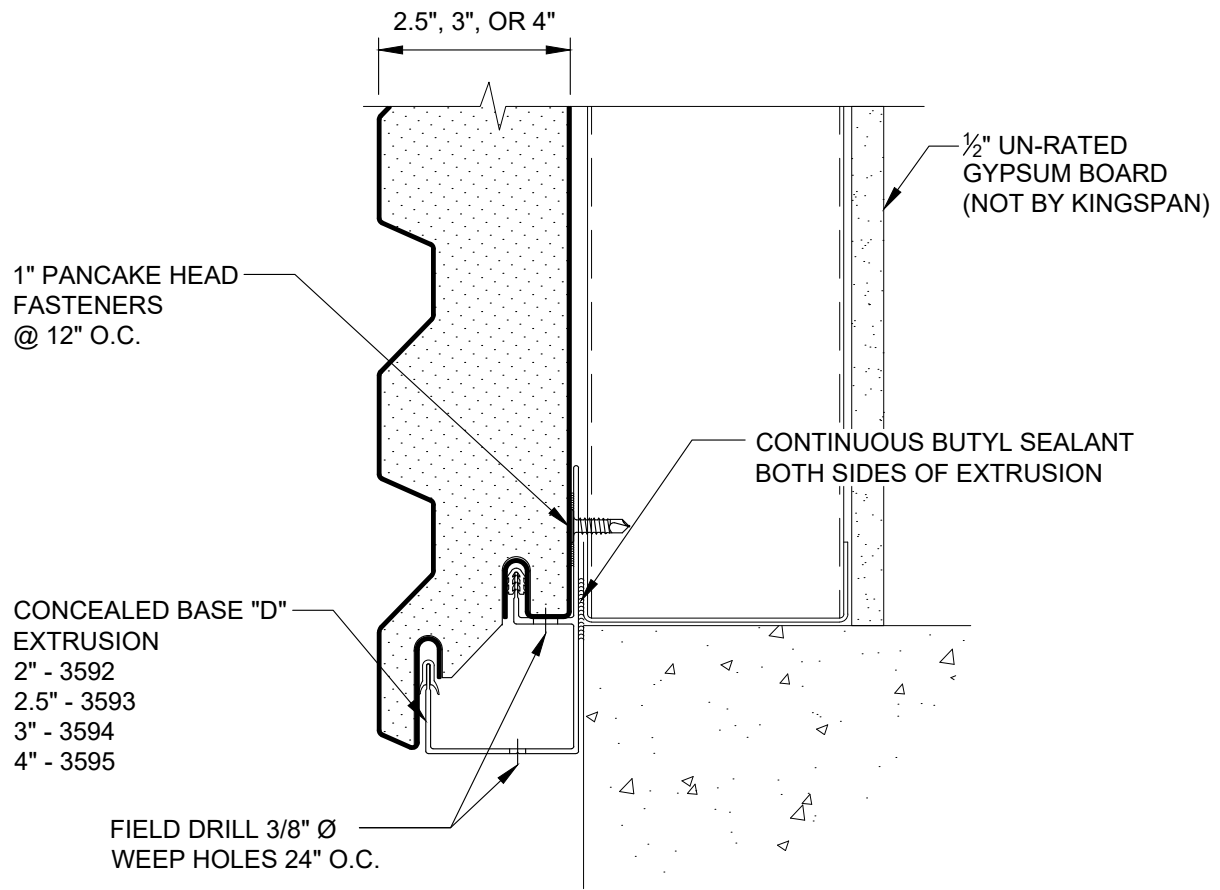
REVISION	
REVISION #	DATE
1	10/27/23

BASE DETAIL -
FLUSH

DETAIL #: AR-BS-01-DW2H
RELEASE: 2023
REGION: NORTH AMERICA
www.kingspanpanels.com

 **BENCHMARK™**

DW-2000R - HORIZONTAL INSTALLATION



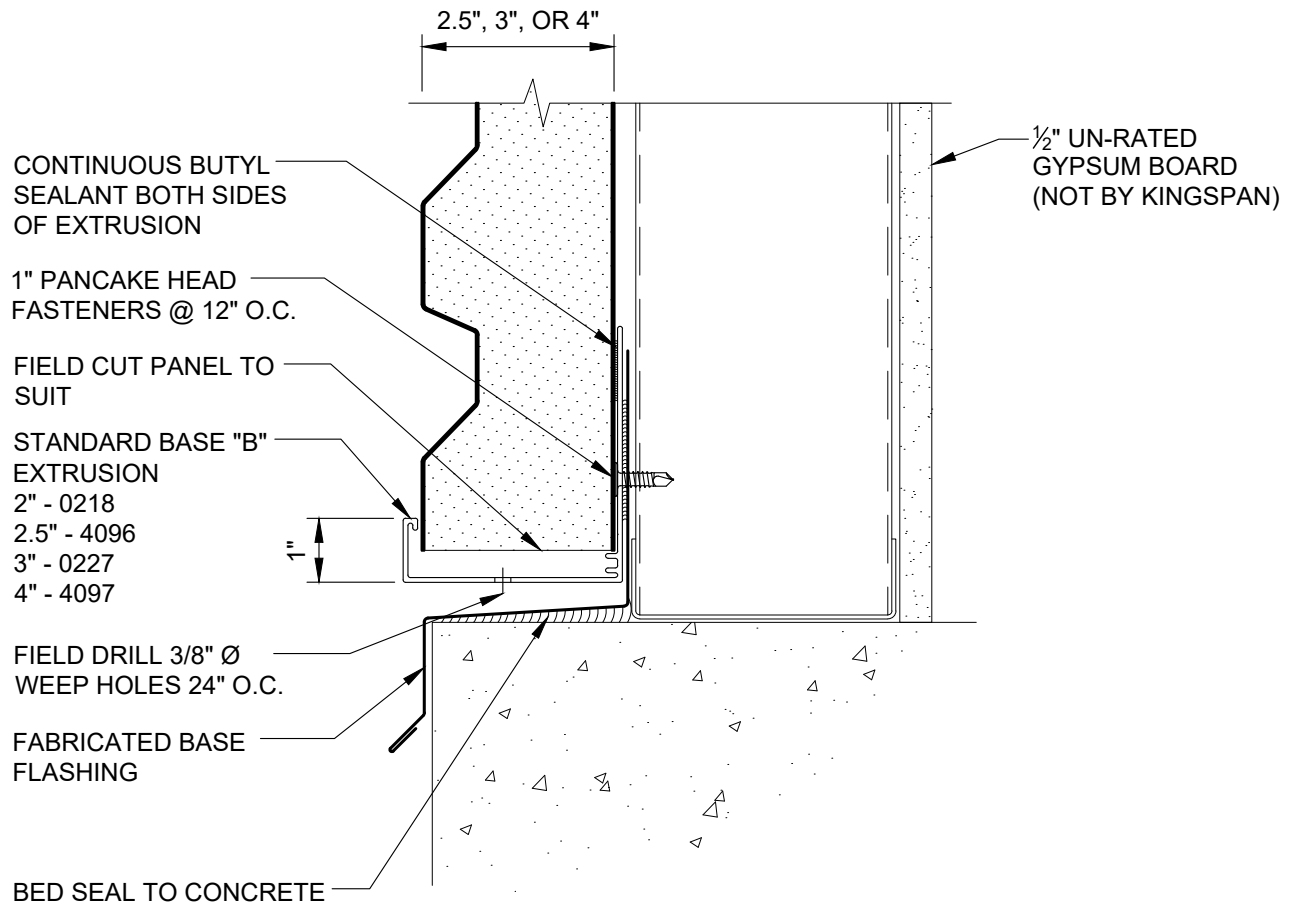
REVISION	
REVISION #	DATE
1	10/27/23

BASE DETAIL -
OVERHANG

DETAIL #: AR-BS-02-DW2H
RELEASE: 2023
REGION: NORTH AMERICA
www.kingspanpanels.com

 **BENCHMARK™**

DW-2000R - HORIZONTAL INSTALLATION



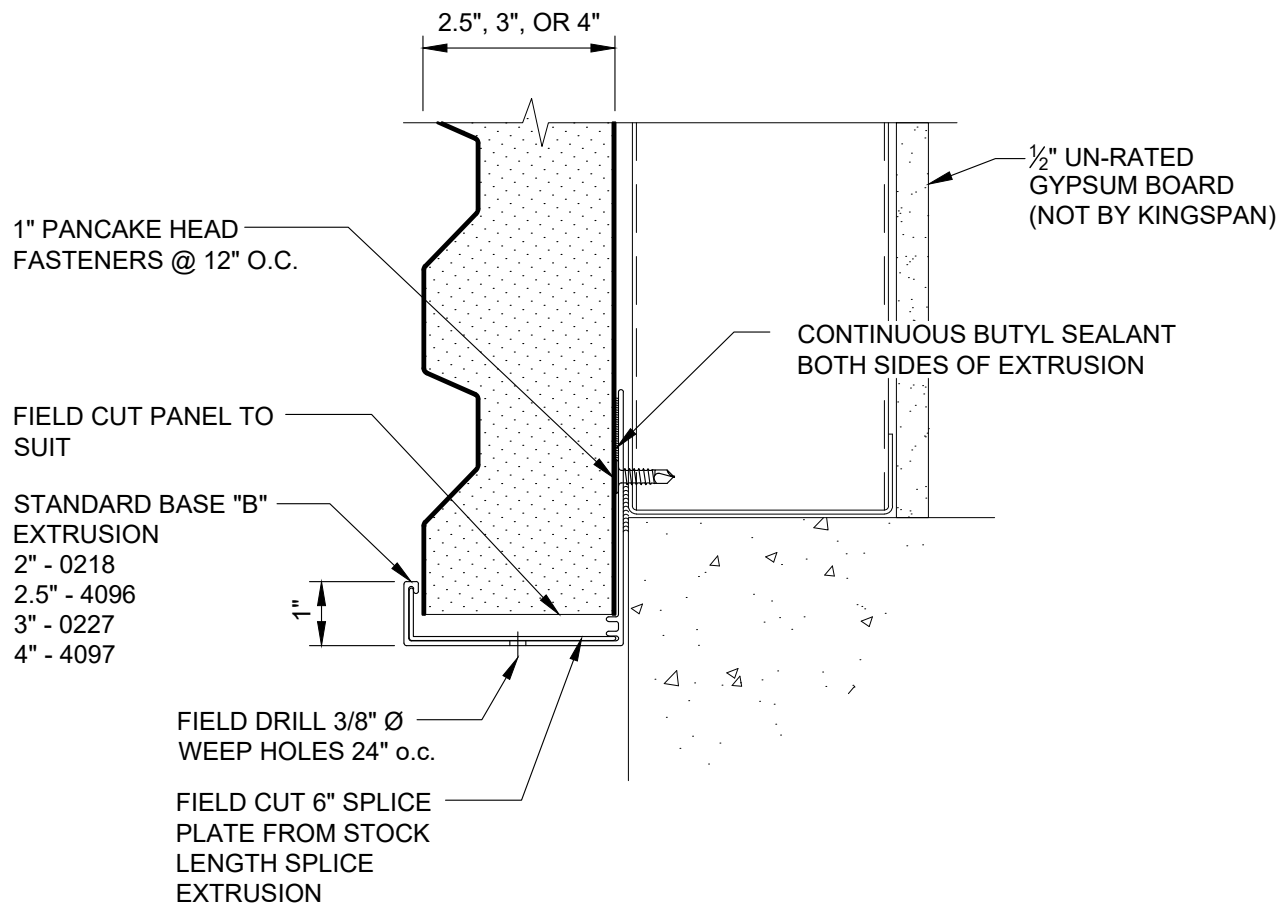
REVISION	
REVISION #	DATE
1	10/27/23

BASE DETAIL
W/ EXTRUSION
(FLUSH)

DETAIL #: AR-BS-03-DW2H
RELEASE: 2023
REGION: NORTH AMERICA
www.kingspanpanels.com

 **BENCHMARK™**

DW-2000R - HORIZONTAL INSTALLATION



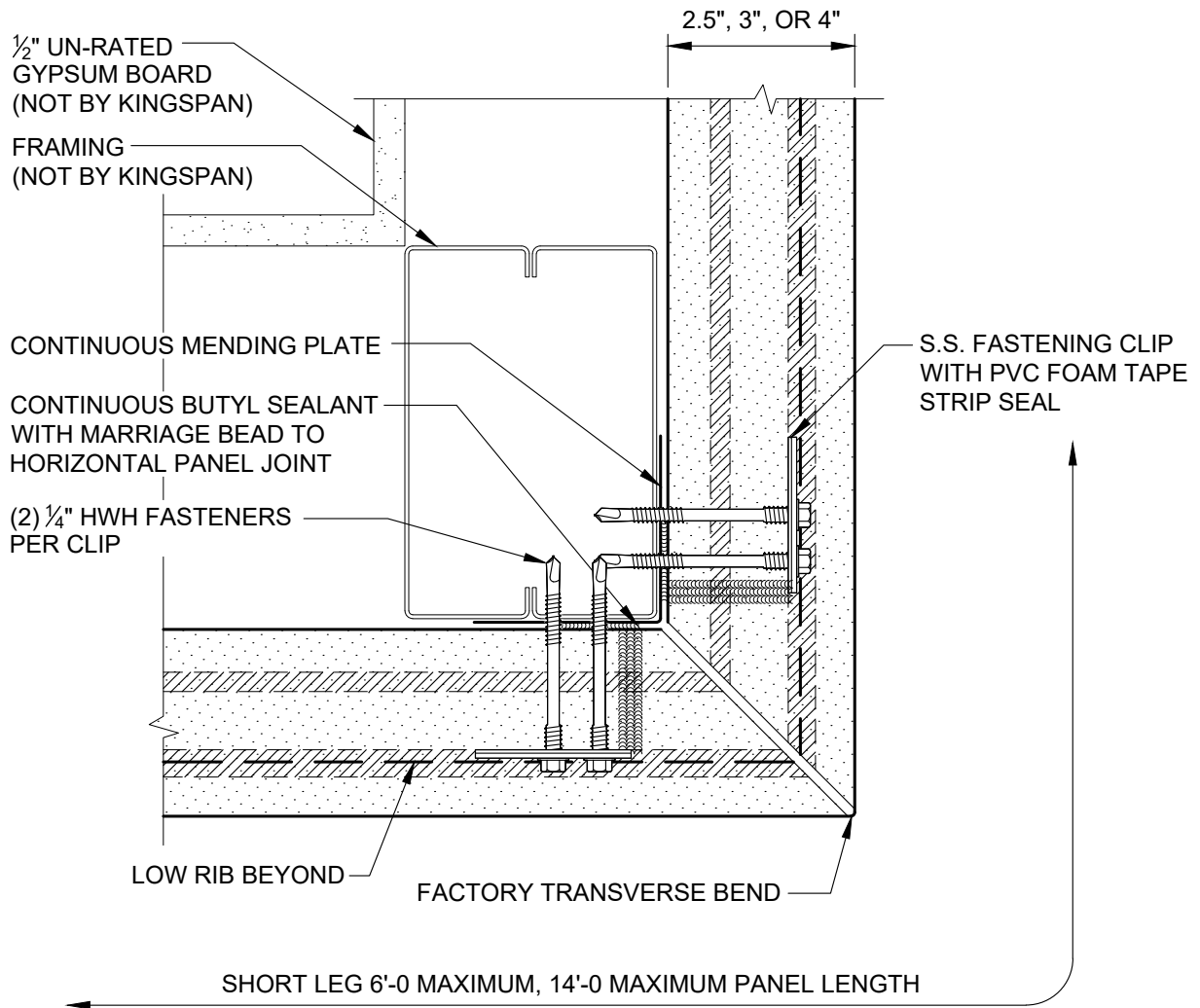
REVISION	
REVISION #	DATE
1	10/27/23

BASE DETAIL
W/ EXTRUSION
(OVERHANG)

DETAIL #: AR-BS-04-DW2H
RELEASE: 2023
REGION: NORTH AMERICA
www.kingspanpanels.com

 **BENCHMARK™**

DW-2000R - HORIZONTAL INSTALLATION



*NOTE: FACTORY TRANSVERSE BEND ANGLE MAY VARY BASED ON SPECIFIC PROJECT REQUIREMENTS

REVISION	
REVISION #	DATE
1	10/27/23

**TRANSVERSE
BENT CORNER**

DETAIL #: AR-OC-01-DW2H

RELEASE: 2023

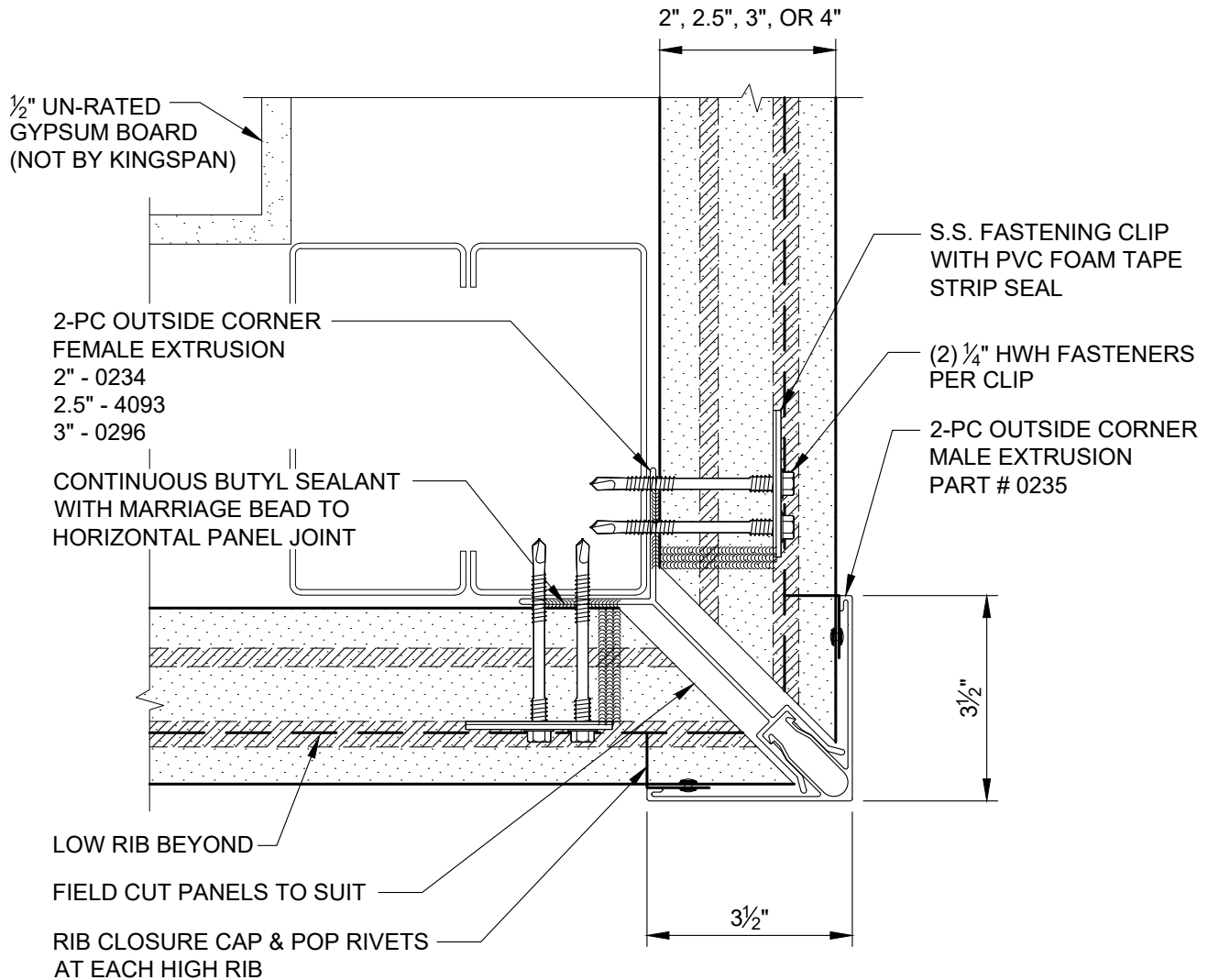
REGION: NORTH AMERICA

www.kingspanpanels.com



BENCHMARK™

DW-2000R - HORIZONTAL INSTALLATION



*NOTE: EXTRUSION FACE CAP FOR 4" PANEL IS 6" x 6"

REVISION	
REVISION #	DATE
1	10/27/23

**OUTSIDE CORNER
WITH 2 PIECE
EXTRUSION**

DETAIL #: AR-OC-02-DW2H

RELEASE: 2023

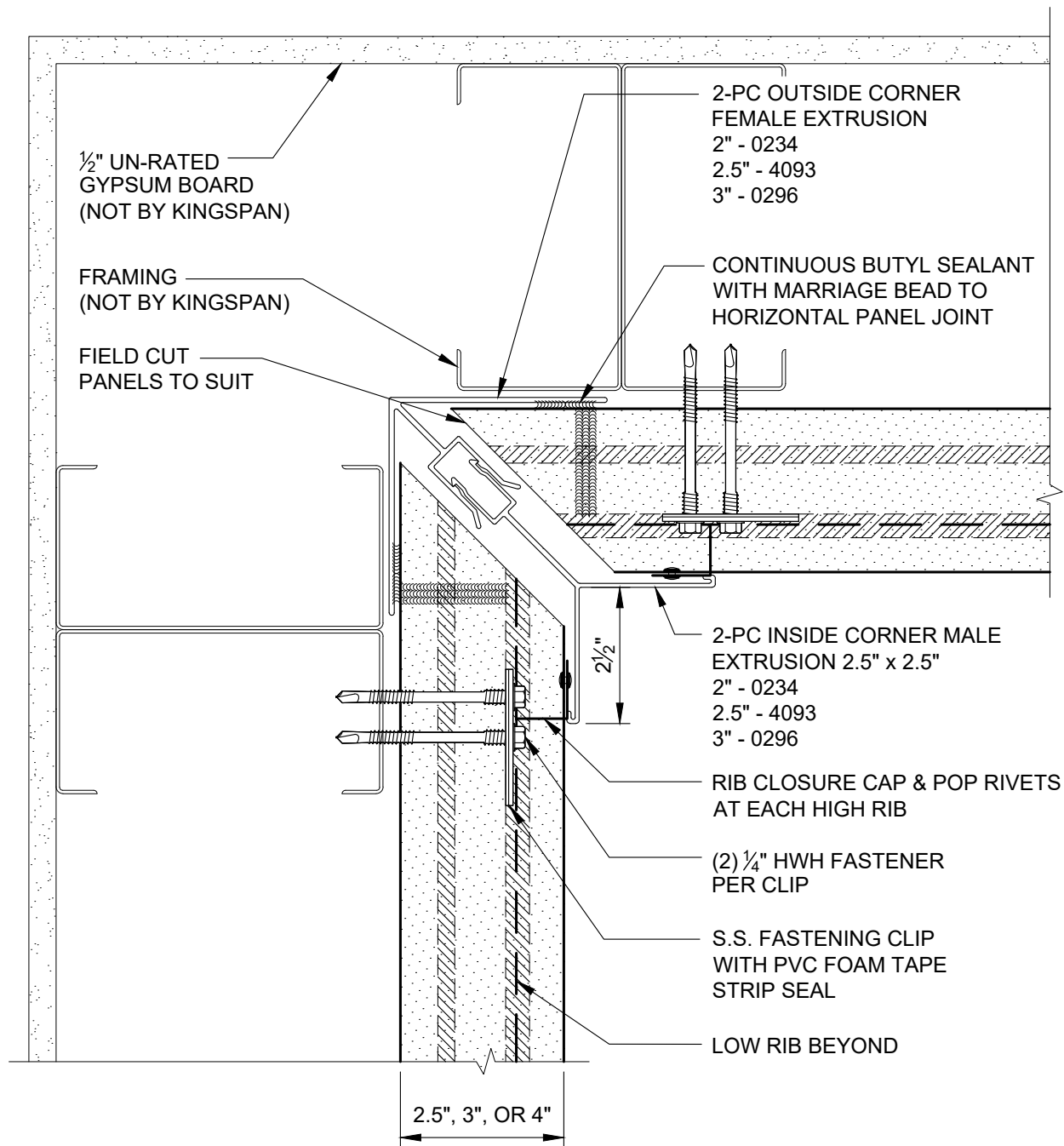
REGION: NORTH AMERICA

www.kingspanpanels.com



BENCHMARK™

DW-2000R - HORIZONTAL INSTALLATION



*NOTE: 2-PC INSIDE CORNER EXTRUSION AVAILABLE FOR 3" PANELS ONLY

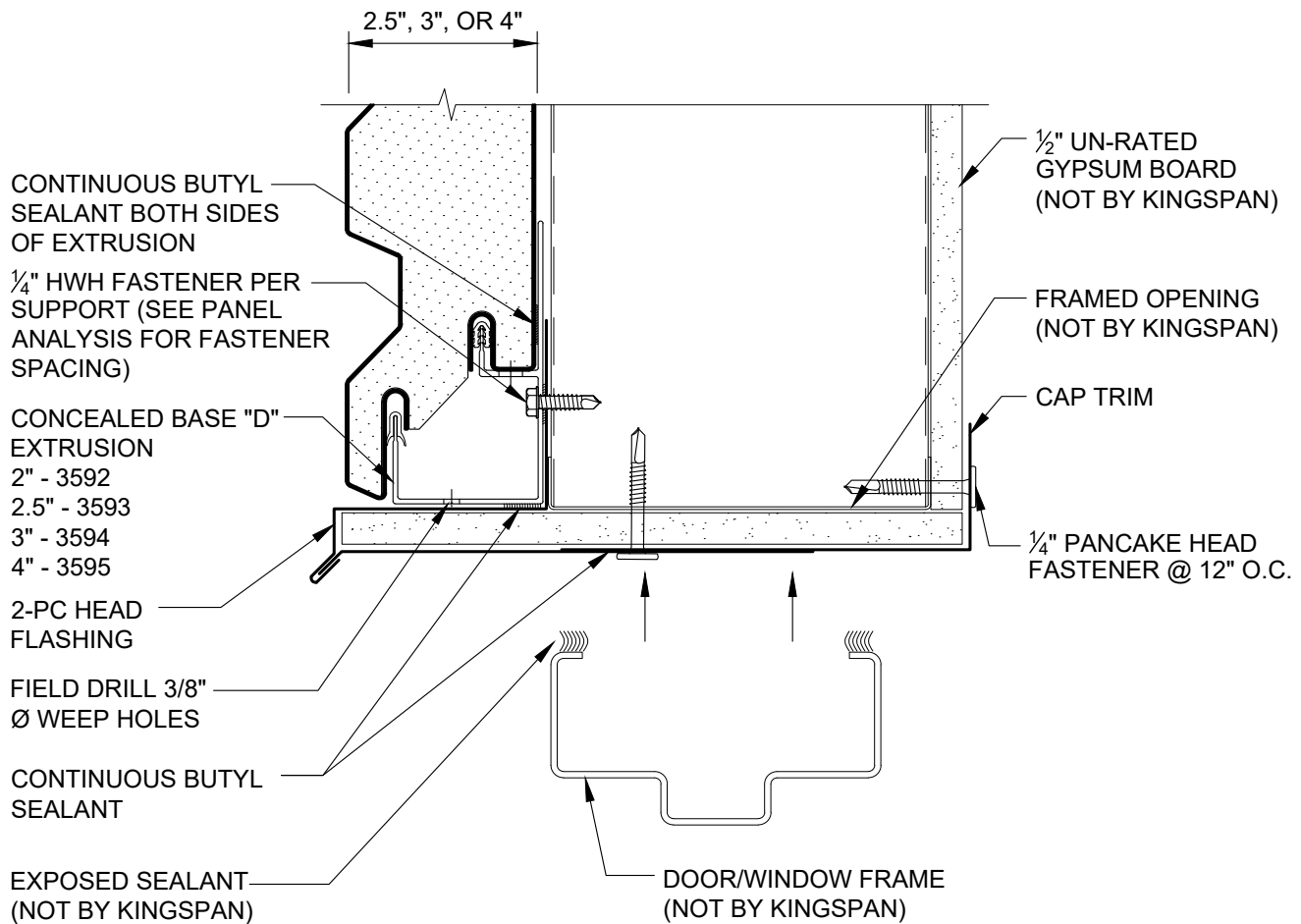
REVISION	
REVISION #	DATE
1	10/27/23

**INSIDE CORNER
WITH 2 PIECE
EXTRUSION**

DETAIL #: AR-IC-01-DW2H
RELEASE: 2023
REGION: NORTH AMERICA
www.kingspanpanels.com

Kingspan. BENCHMARK™

DW-2000R - HORIZONTAL INSTALLATION



NOTE: 1) SEE DETAIL AR-TL-11-DW2H, AR-TL-12-DW2H, AR-TL-13-DW2H, AR-TL-14-DW2H AND AR-TL-15-DW2H FOR TYPICAL TRIM LAP INSTRUCTIONS

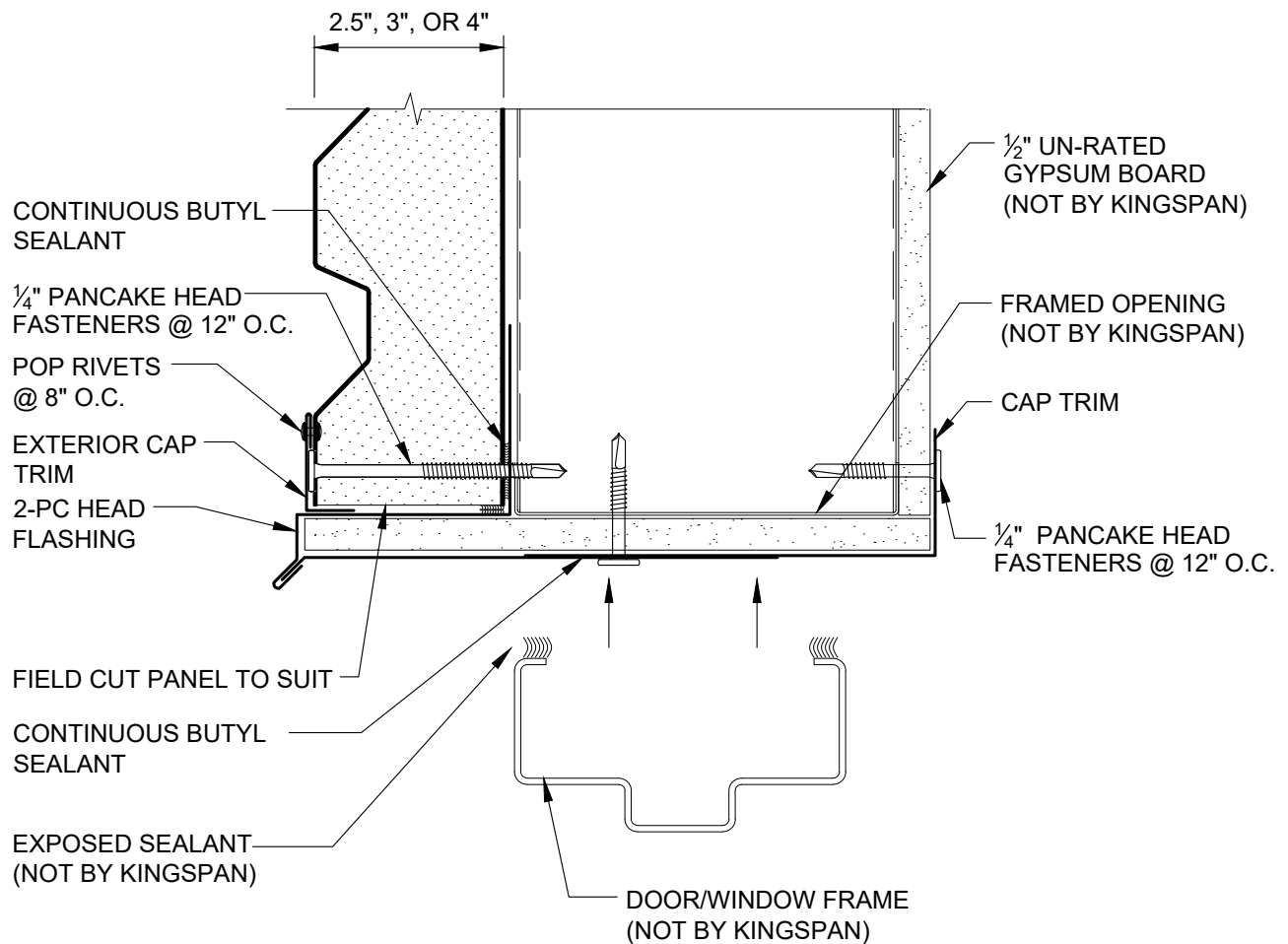
REVISION	
REVISION #	DATE
1	10/27/23

HEAD ON
PANEL JOINT

DETAIL #: AR-FO-01-DW2H
RELEASE: 2023
REGION: NORTH AMERICA
www.kingspanpanels.com

 **BENCHMARK™**

DW-2000R - HORIZONTAL INSTALLATION



NOTE: 1) SEE DETAIL AR-TL-11-DW2H, AR-TL-12-DW2H, AR-TL-13-DW2H, AR-TL-14-DW2H AND AR-TL-15-DW2H FOR TYPICAL TRIM LAP INSTRUCTIONS

REVISION	
REVISION #	DATE
1	10/27/23

FIELD CUT HEAD

DETAIL #: AR-FO-02-DW2H

RELEASE: 2023

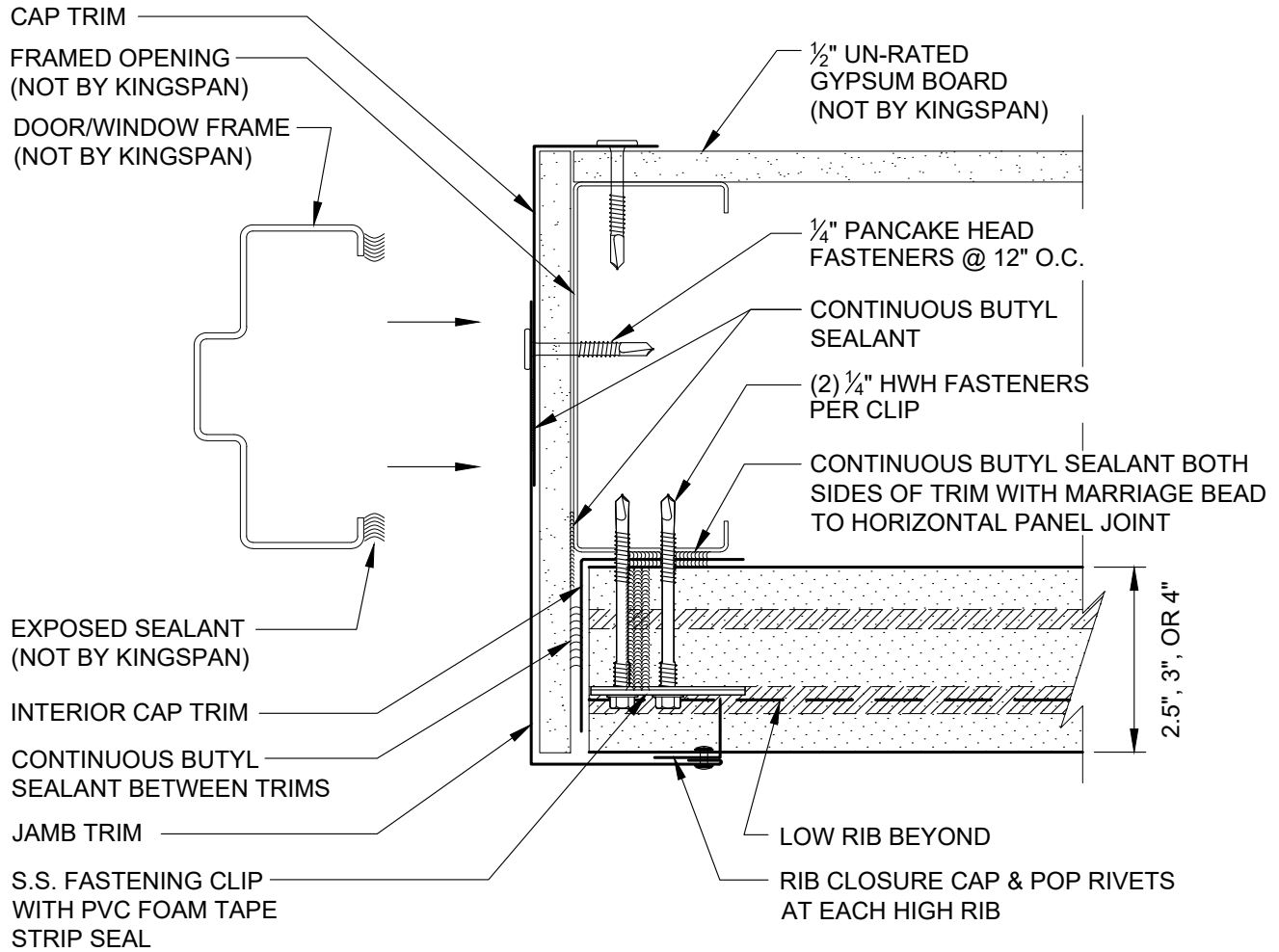
REGION: NORTH AMERICA

www.kingspanpanels.com



BENCHMARK™

DW-2000R - HORIZONTAL INSTALLATION



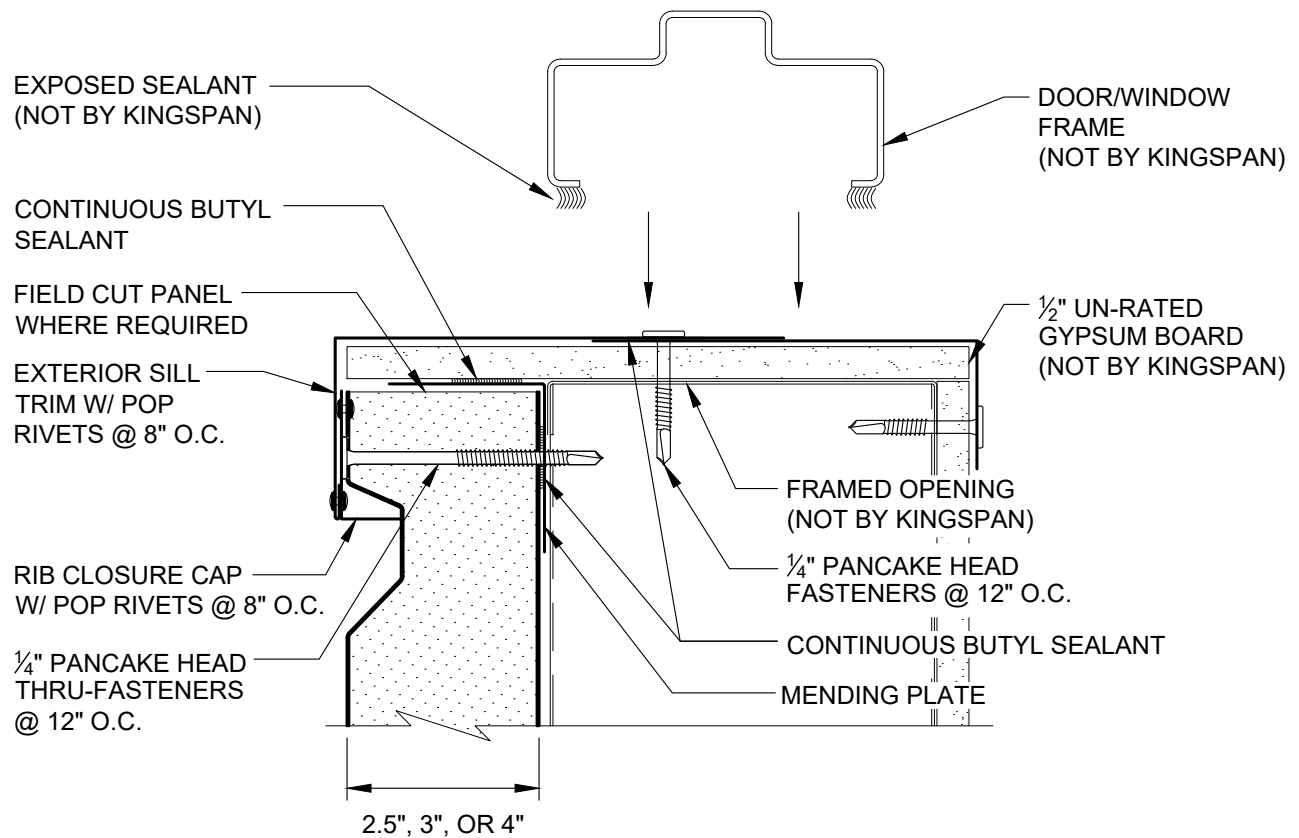
REVISION	
REVISION #	DATE
1	10/27/23

**JAMB
WITH FLASHING**

DETAIL #: AR-FO-03-DW2H
RELEASE: 2023
REGION: NORTH AMERICA
www.kingspanpanels.com

Kingspan. BENCHMARK™

DW-2000R - HORIZONTAL INSTALLATION



NOTE: NOTE: 1) 1) SEE DETAIL AR-TL-11-DW2H, AR-TL-12-DW2H, AR-TL-13-DW2H, AR-TL-14-DW2H AND AR-TL-15-DW2H FOR TYPICAL TRIM LAP INSTRUCTIONS

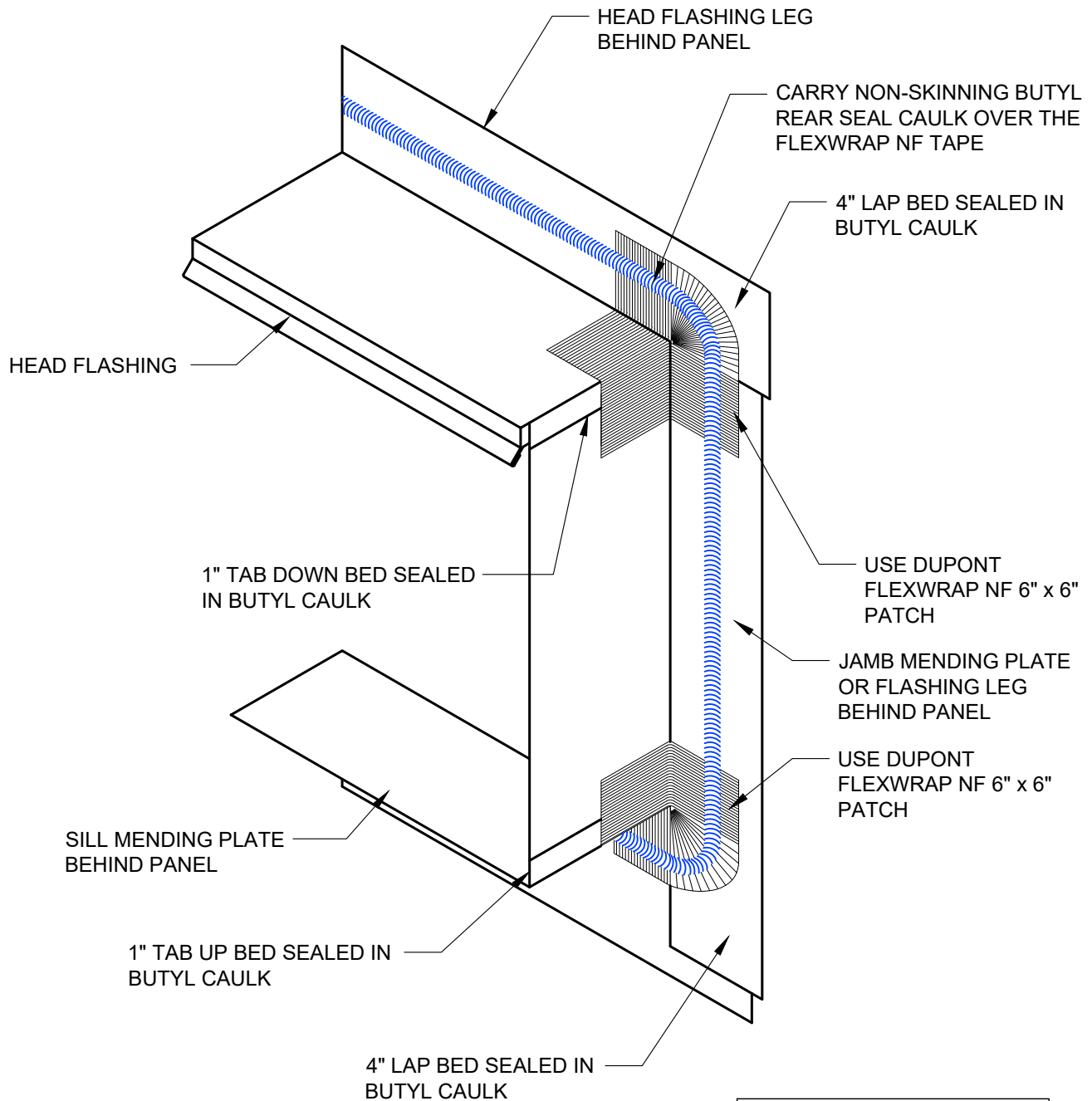
REVISION	
REVISION #	DATE
1	10/27/23

SILL W/
FLASHING

DETAIL #: AR-FO-04-DW2H
RELEASE: 2023
REGION: NORTH AMERICA
www.kingspanpanels.com

 **BENCHMARK™**

DW-2000R - HORIZONTAL INSTALLATION



PERFORM THIS WORK PRIOR
TO INSTALLING PANELS

REVISION

REVISION #	DATE
1	10/27/23

TRIM AT FRAMED
OPENING

DETAIL #: AR-FO-05-DW2H

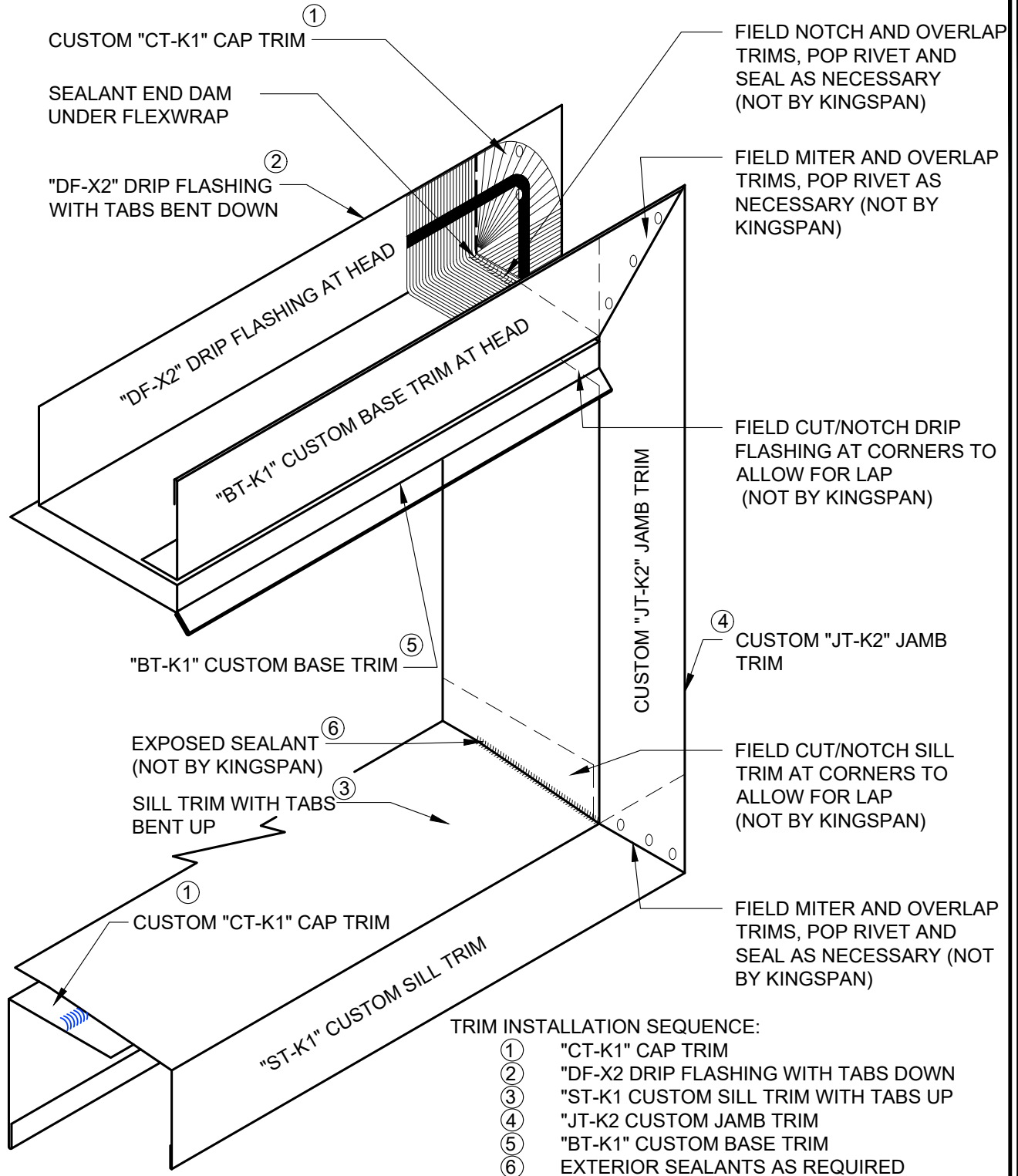
RELEASE: 2023

REGION: NORTH AMERICA

www.kingspanpanels.com

 **BENCHMARK™**

DW-2000R - HORIZONTAL INSTALLATION



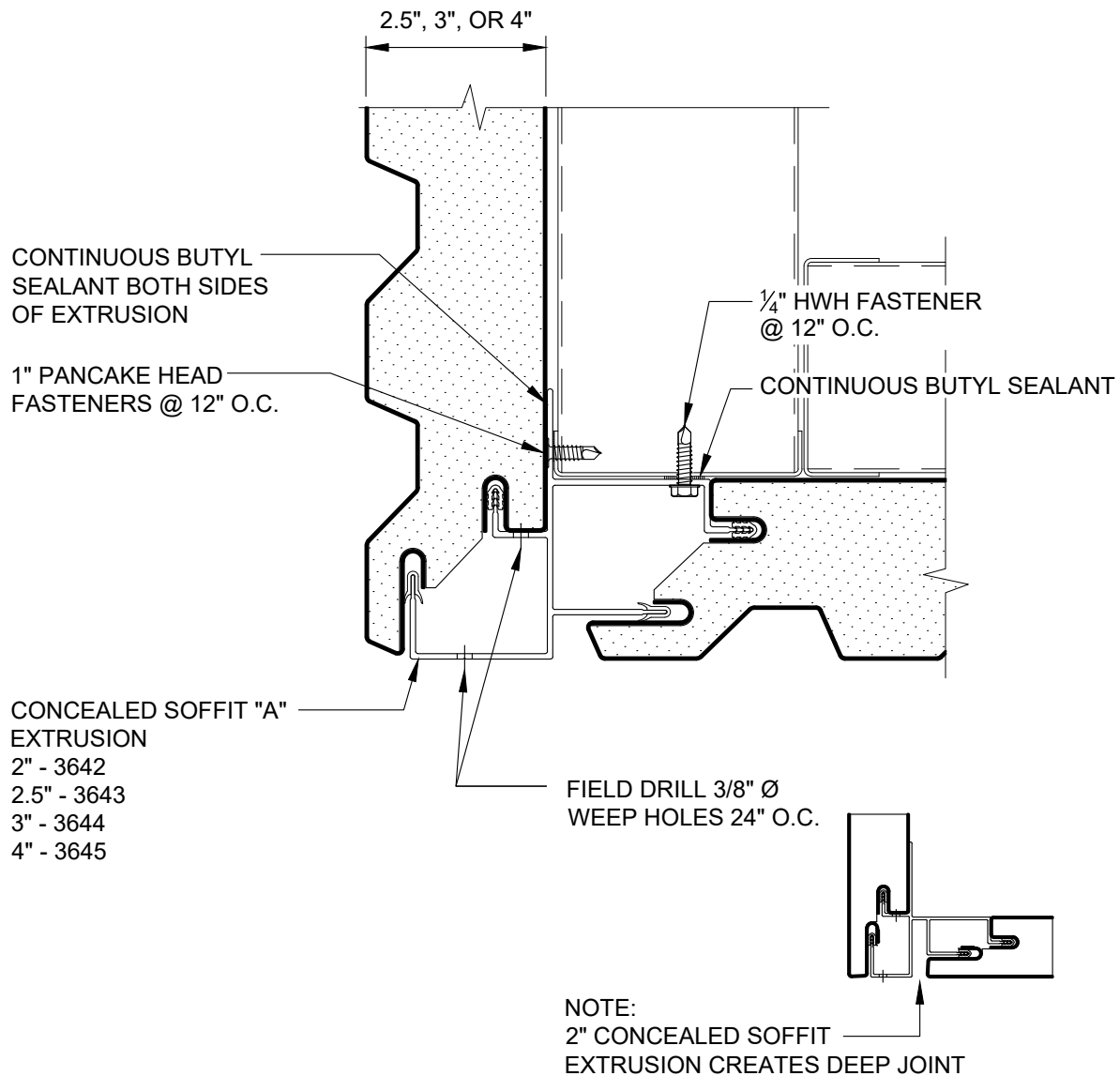
REVISION	
REVISION #	DATE
1	10/27/23

TRIM LAP W/
FLEXWRAP AT
FRAMED OPENING

DETAIL #: AR-FO-06-DW2H
RELEASE: 2023
REGION: NORTH AMERICA
www.kingspanpanels.com

 **BENCHMARK™**

DW-2000R - HORIZONTAL INSTALLATION



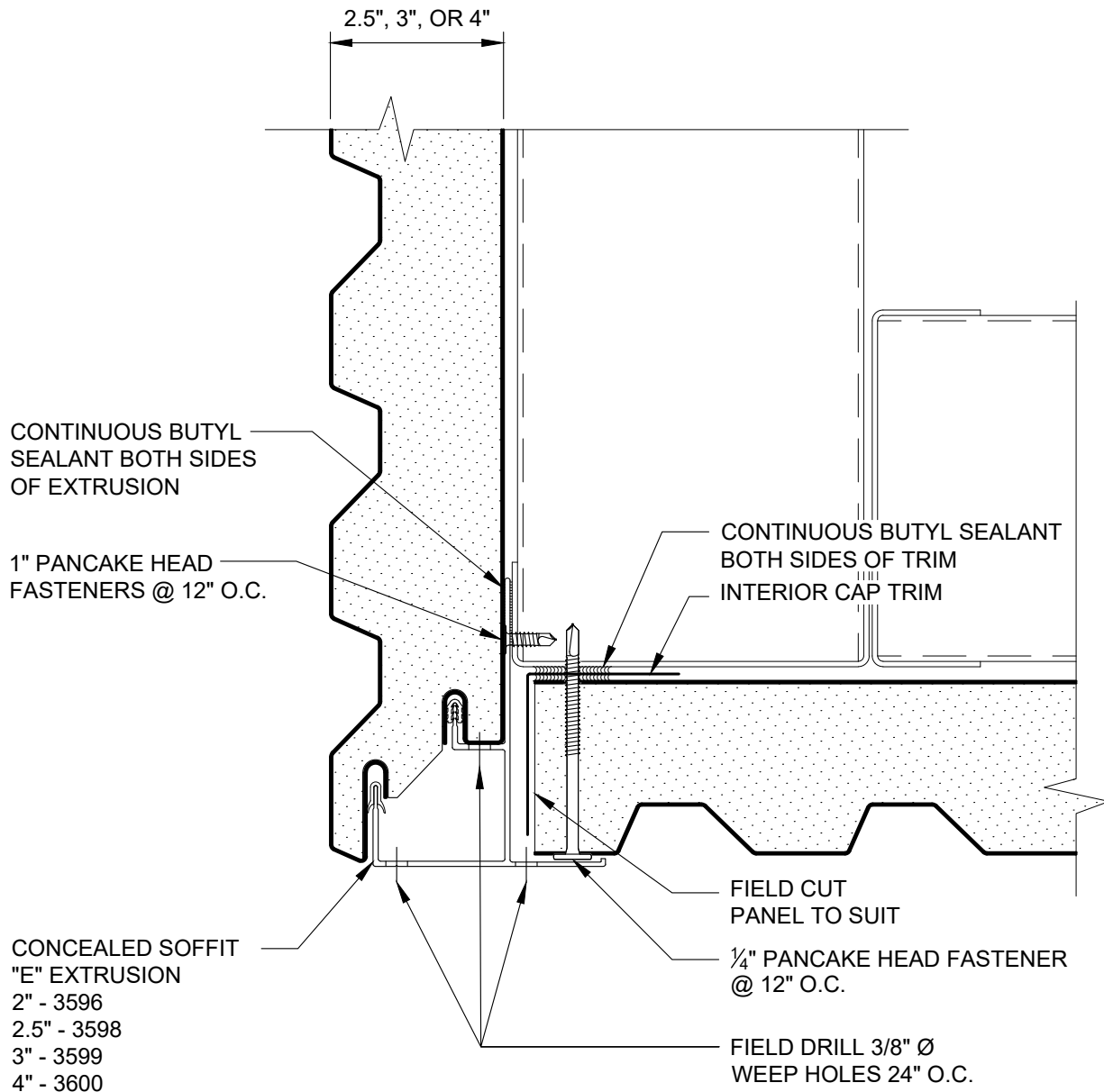
REVISION	
REVISION #	DATE
1	10/27/23

WALL TO SOFFIT

DETAIL #: AR-SF-01-DW2H
RELEASE: 2023
REGION: NORTH AMERICA
www.kingspanpanels.com

 **BENCHMARK™**

DW-2000R - HORIZONTAL INSTALLATION



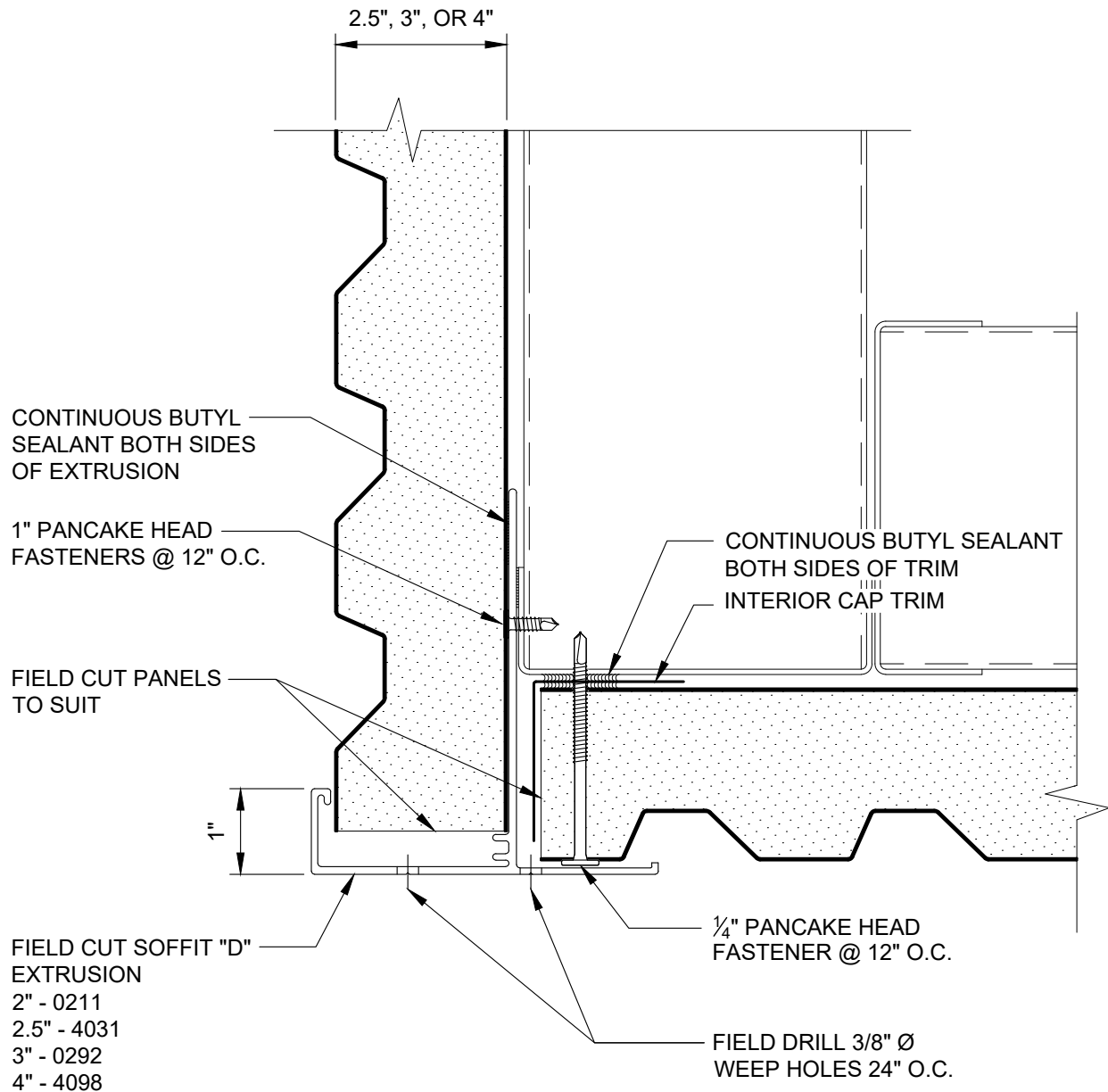
REVISION	
REVISION #	DATE
1	10/27/23

WALL TO FIELD
CUT SOFFIT

DETAIL #: AR-SF-02-DW2H
RELEASE: 2023
REGION: NORTH AMERICA
www.kingspanpanels.com

 **BENCHMARK™**

DW-2000R - HORIZONTAL INSTALLATION



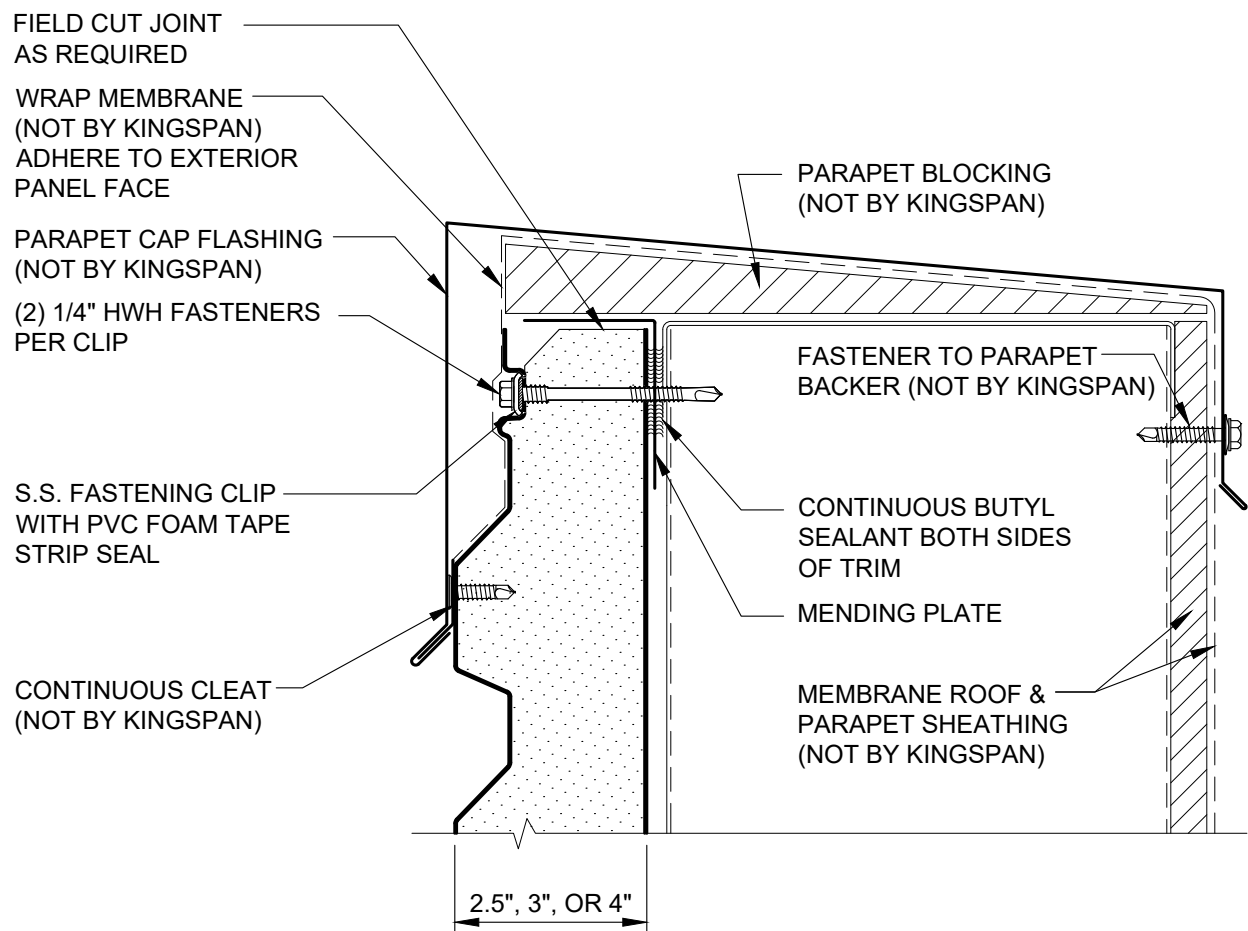
REVISION	
REVISION #	DATE
1	10/27/23

FIELD CUT SOFFIT
AND FASCIA

DETAIL #: AR-SF-03-DW2H
RELEASE: 2023
REGION: NORTH AMERICA
www.kingspanpanels.com

 **BENCHMARK™**

DW-2000R - HORIZONTAL INSTALLATION



REVISION	
REVISION #	DATE
1	10/27/23

PARAPET W/
PANEL JOINT

DETAIL #: AR-PR-01-DW2H

RELEASE: 2023

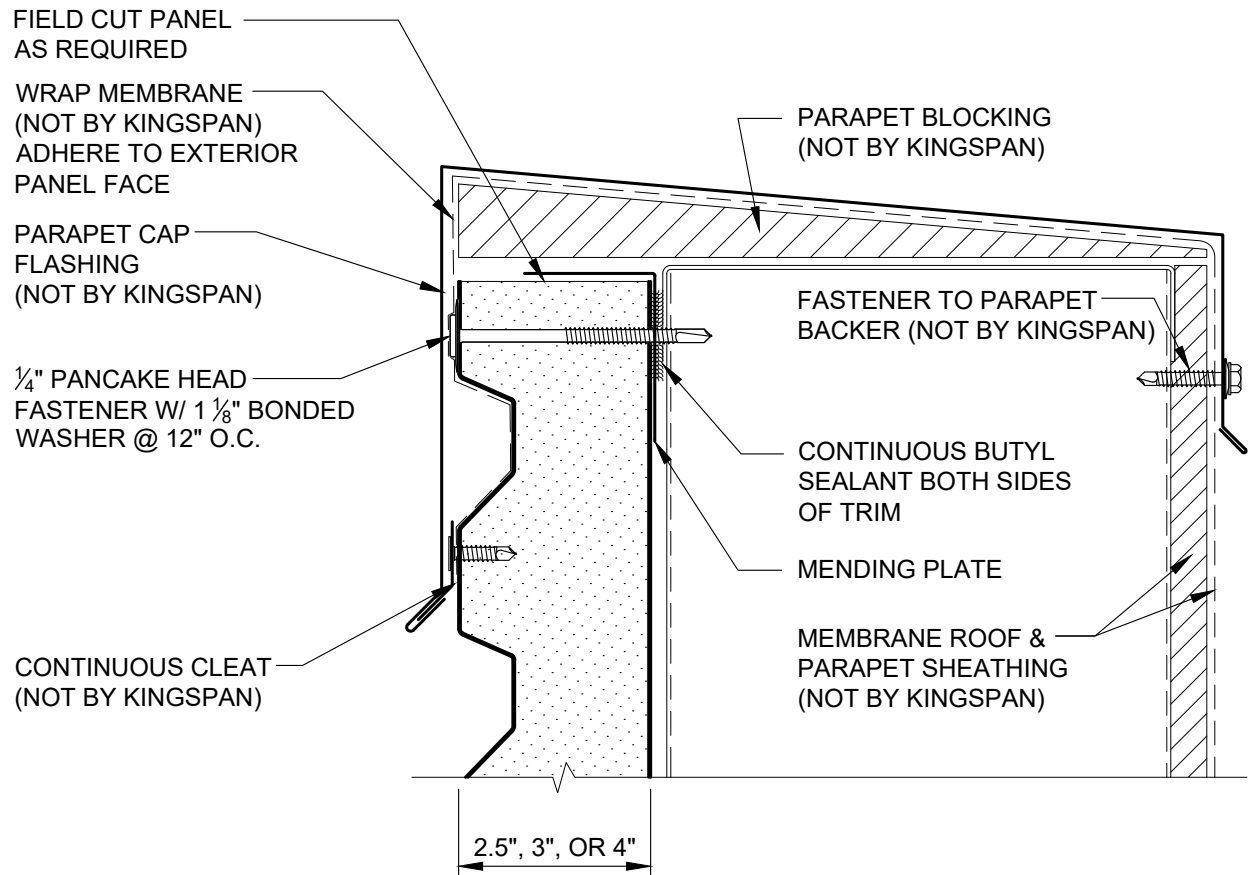
REGION: NORTH AMERICA

www.kingspanpanels.com



BENCHMARK™

DW-2000R - HORIZONTAL INSTALLATION



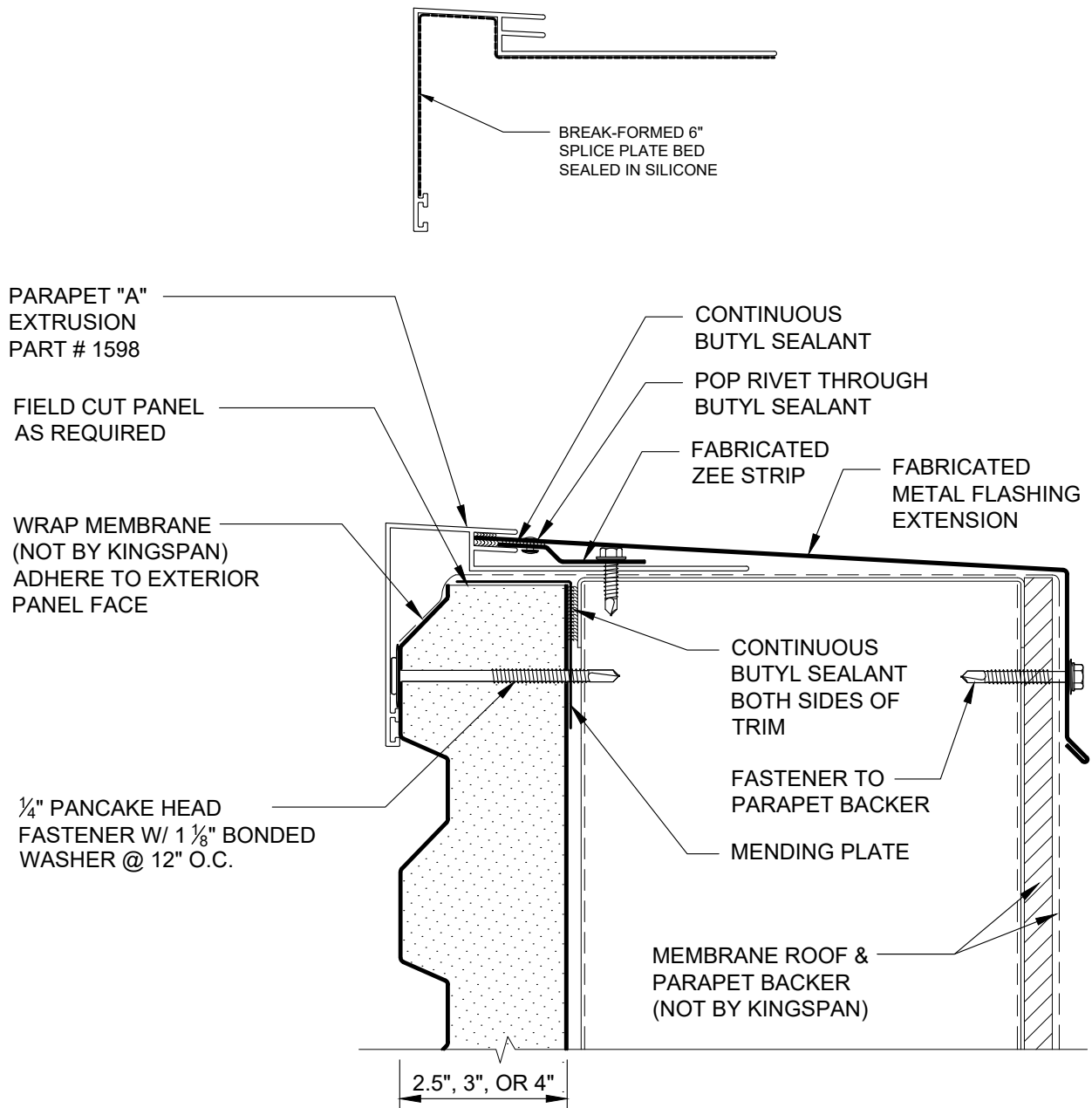
REVISION	
REVISION #	DATE
1	10/27/23

PARAPET W/
FLUSH TRIM

DETAIL #: AR-PR-02-DW2H
RELEASE: 2023
REGION: NORTH AMERICA
www.kingspanpanels.com

 **BENCHMARK™**

DW-2000R - HORIZONTAL INSTALLATION



REVISION	
REVISION #	DATE
1	10/27/23

PARAPET W/ FLUSH
EXTRUSION

DETAIL #: AR-PR-03-DW2H

RELEASE: 2023

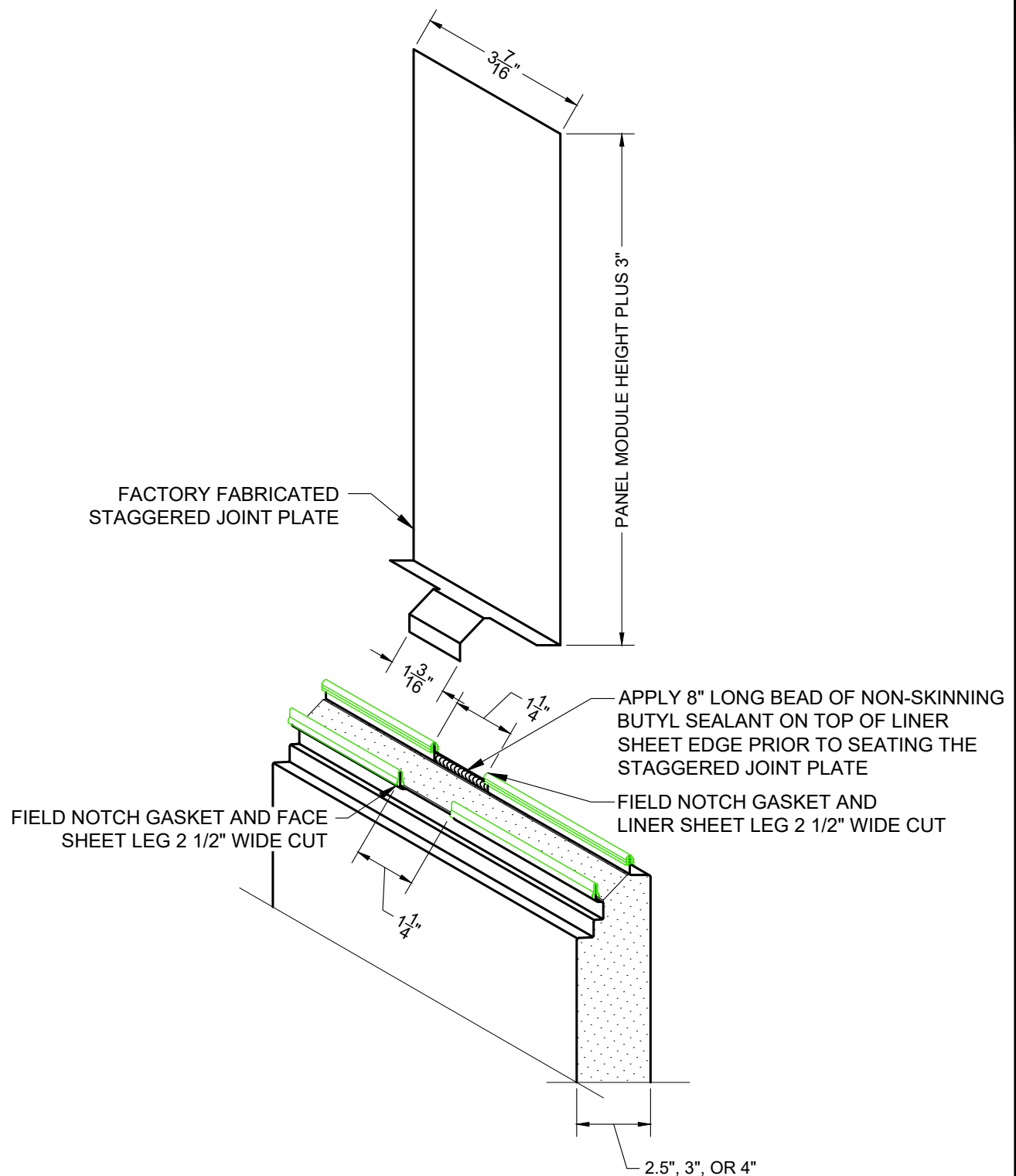
REGION: NORTH AMERICA

www.kingspanpanels.com



BENCHMARK™

DW-2000R - HORIZONTAL INSTALLATION



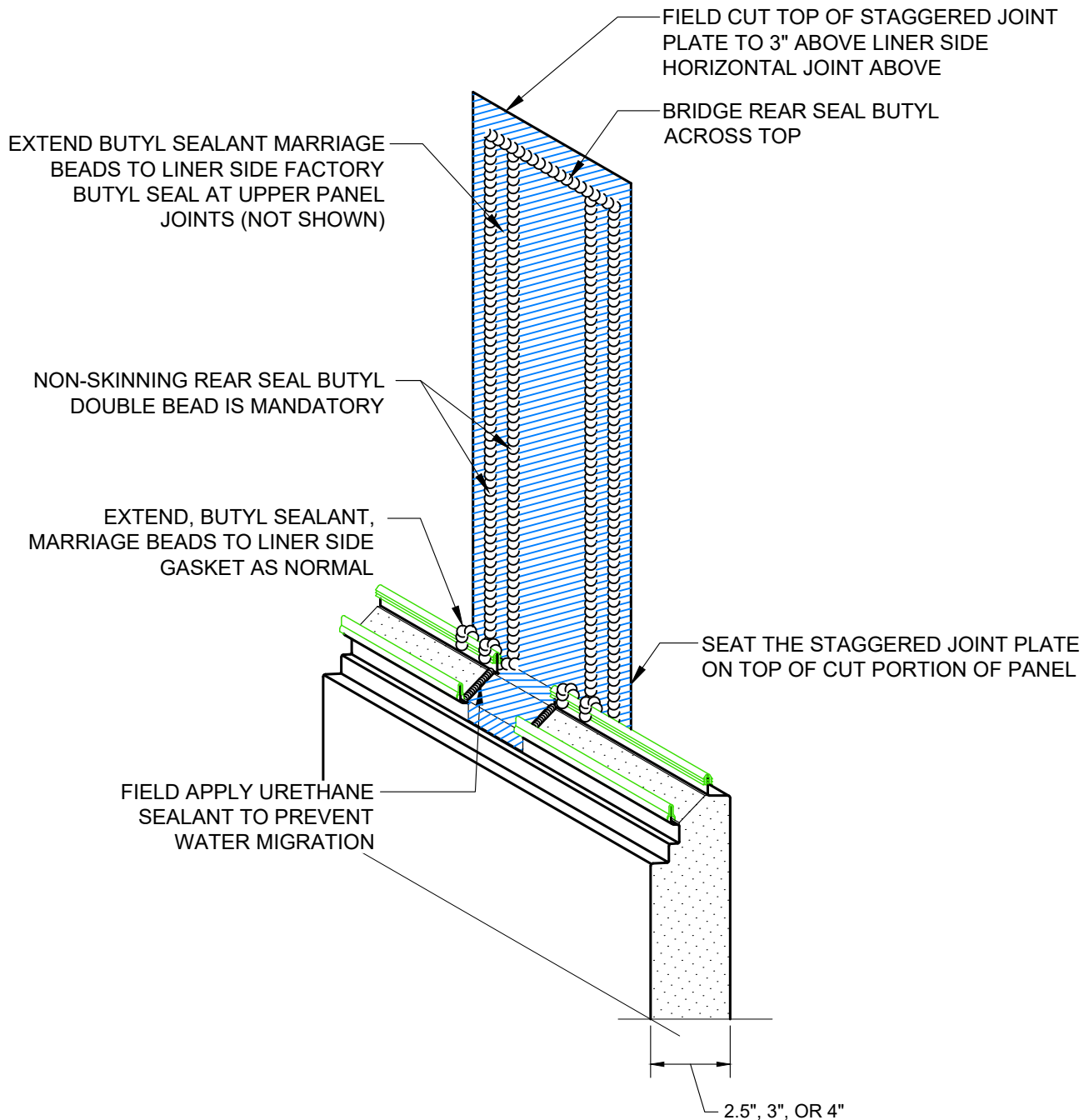
REVISION	
REVISION #	DATE
1	10/27/23

2.5", 3", 4" STAGGERED
PANEL JOINT

DETAIL #: AR-SJ-01-DW2H
RELEASE: 2023
REGION: NORTH AMERICA
www.kingspanpanels.com

 **BENCHMARK™**

DW-2000R - HORIZONTAL INSTALLATION



REVISION	
REVISION #	DATE
1	10/27/23

2.5", 3", 4" STAGGERED
PANEL JOINT

DETAIL #: AR-SJ-02-DW2H

RELEASE: 2023

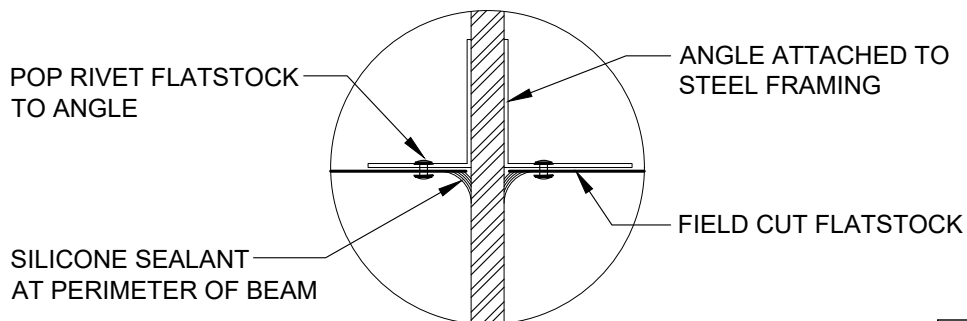
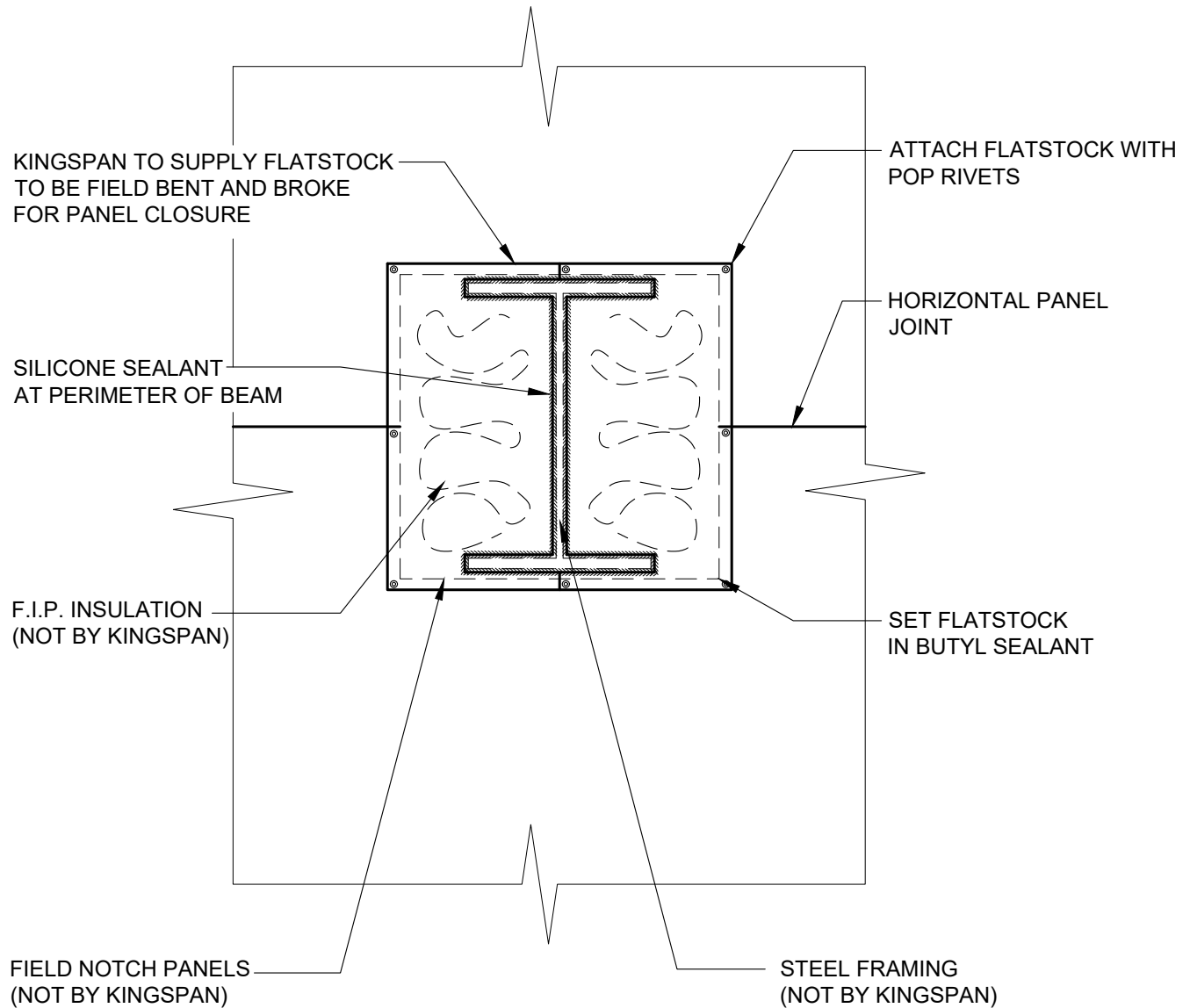
REGION: NORTH AMERICA

www.kingspanpanels.com



BENCHMARK™

DW-2000R - HORIZONTAL INSTALLATION



REVISION	
REVISION #	DATE
1	10/27/23

BEAM PENETRATION

DETAIL #: AR-TL-01-DW2H

RELEASE: 2023

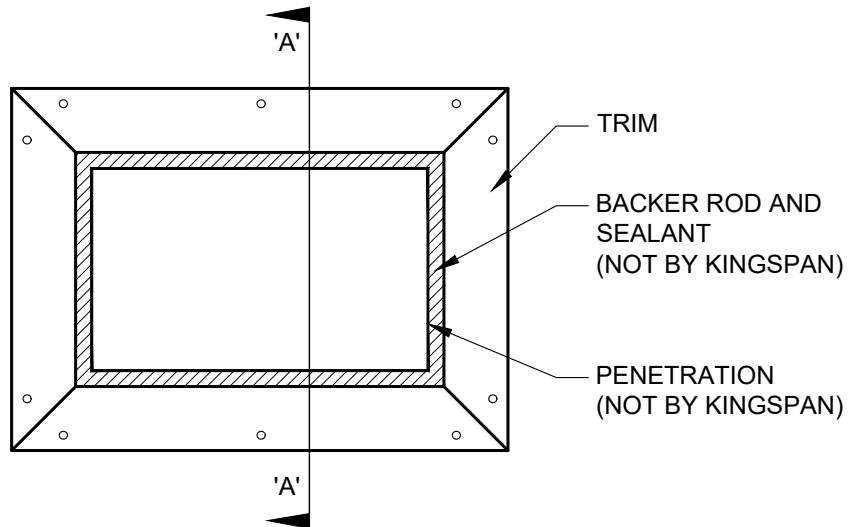
REGION: NORTH AMERICA

www.kingspanpanels.com

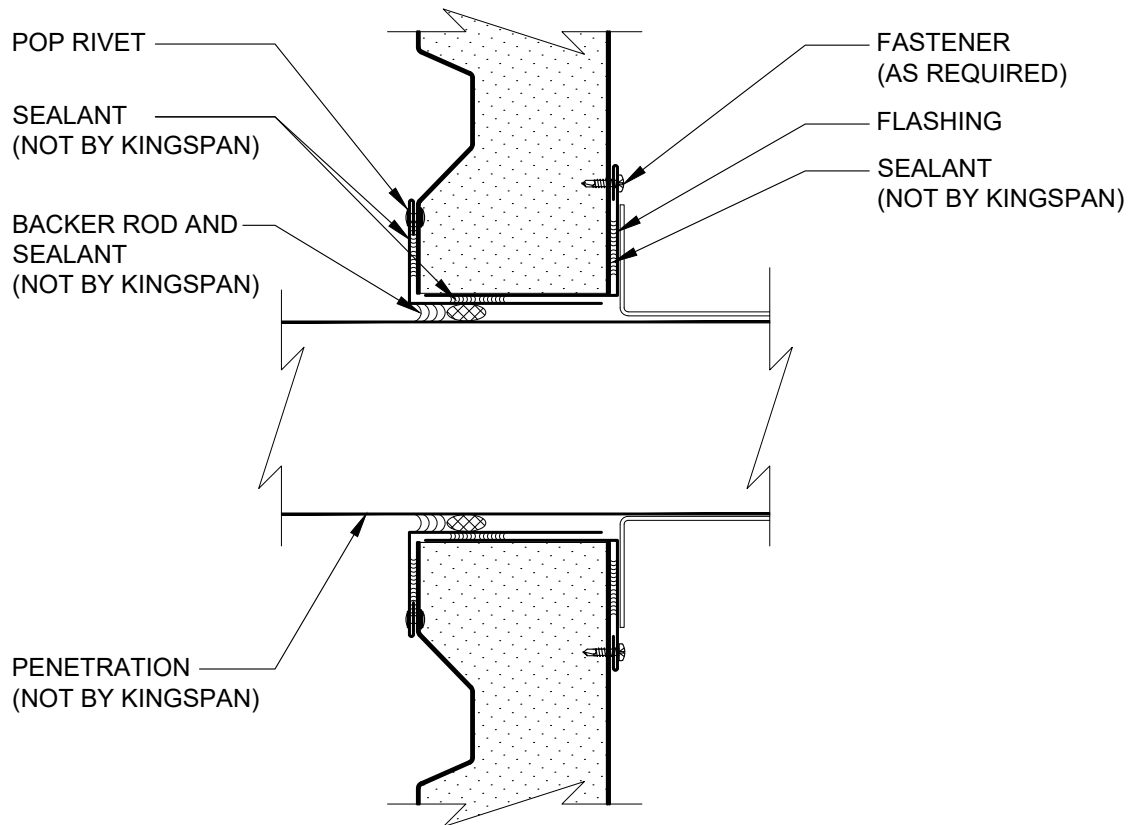


BENCHMARK™

DW-2000R - HORIZONTAL INSTALLATION



ELEVATION



SECTION 'A-A'

NOTES: 1. DO NOT ALIGN PENETRATIONS AT PANEL JOINT LOCATIONS.

2. FLASHING AT PENETRATIONS TO BE FIELD FABRICATED FROM FLATSTOCK SHEETS AS NECESSARY

REVISION	
REVISION #	DATE
1	10/27/23

**WALL PENETRATION
SECTION**

DETAIL #: AR-TL-02-DW2H

RELEASE: 2023

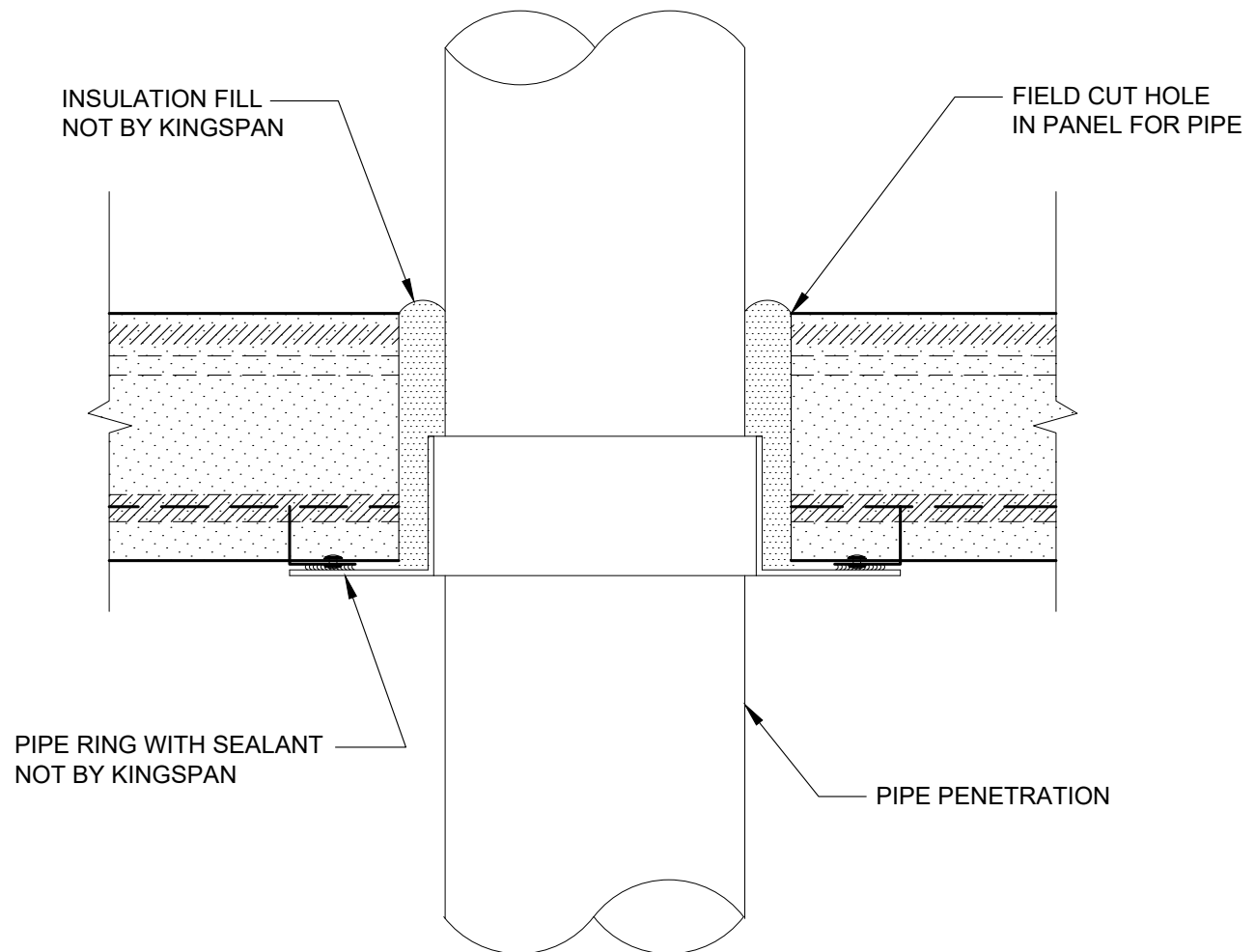
REGION: NORTH AMERICA

www.kingspanpanels.com

 **BENCHMARK™**

DW-2000R - HORIZONTAL INSTALLATION

Pipe Penetration Detail
Horizontal Application



REVISION	
REVISION #	DATE
1	10/27/23

PIPE PENETRATION

DETAIL #: AR-TL-03-DW2H

RELEASE: 2023

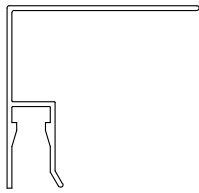
REGION: NORTH AMERICA

www.kingspanpanels.com

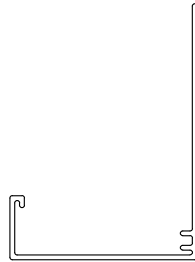


BENCHMARK™

DW-2000R - HORIZONTAL INSTALLATION



2.5" TWO PIECE
ENDWALL/JAMB
EXTRUSION RECEIVER
PART # 1063



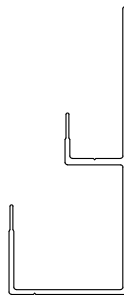
2.5" BASE "B" EXTRUSION
PART # 4096



PARAPET "A" EXTRUSION
PART # 1598



TWO PIECE ENDWALL/JAMB
EXTRUSION CAP
PART # 0215

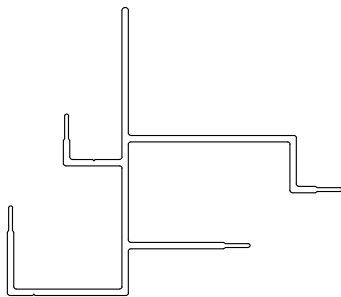


2.5" PANEL CONCEALED
BASE "D" EXTRUSION
PART # 3593

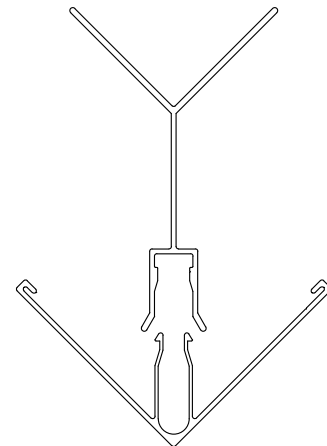


SILL EXTRUSION
PART # 4064

2.5" OUTSIDE CORNER
EXTRUSION FEMALE
PART # 4093



2.5" PANEL CONCEALED
SOFFIT EXTRUSION
PART # 3643



CORNER
EXTRUSION CAP
PART # 0235

REVISION	
REVISION #	DATE
1	10/27/23

2.5" EXTRUSIONS

DETAIL #: AR-TL-04-DW2H

RELEASE: 2023

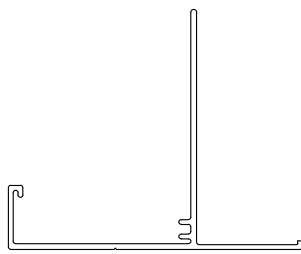
REGION: NORTH AMERICA

www.kingspanpanels.com

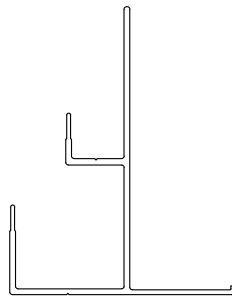


BENCHMARK™

DW-2000R - HORIZONTAL INSTALLATION



2.5" STANDARD SOFFIT "D"
EXTRUSION
PART # 4031



2.5" FIELD CUT CONCEALED
SOFFIT "E" EXTRUSION
PART # 3598

REVISION	
REVISION #	DATE
1	10/27/23

2.5" EXTRUSIONS

DETAIL #: AR-TL-05-DW2H

RELEASE: 2023

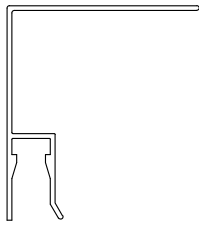
REGION: NORTH AMERICA

www.kingspanpanels.com

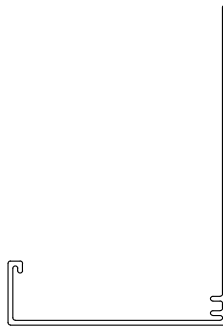


BENCHMARK™

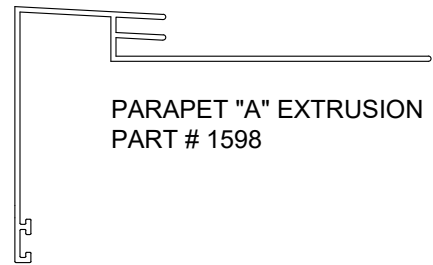
DW-2000R - HORIZONTAL INSTALLATION



3" TWO PIECE
ENDWALL/JAMB
EXTRUSION RECEIVER
PART # 0269



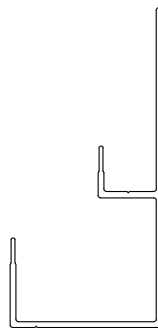
3" BASE "B" EXTRUSION
PART # 0227



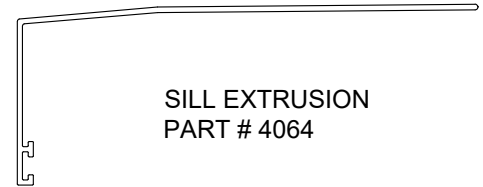
PARAPET "A" EXTRUSION
PART # 1598



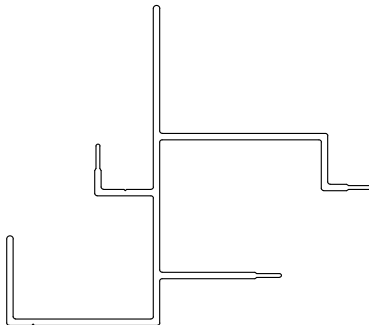
TWO PIECE ENDWALL/JAMB
EXTRUSION CAP
PART # 0215



3" PANEL CONCEALED BASE
"D" EXTRUSION
PART # 3594

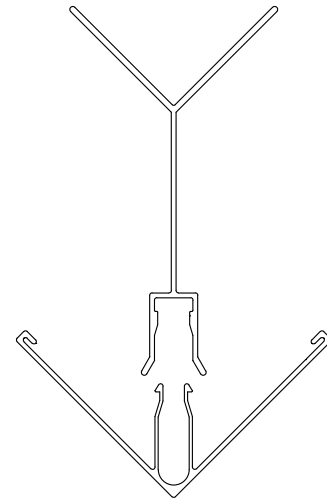


SILL EXTRUSION
PART # 4064



3" PANEL CONCEALED
SOFFIT "A" EXTRUSION
PART # 3644

3" OUTSIDE CORNER
EXTRUSION FEMALE
PART # 0296



CORNER
EXTRUSION CAP
PART # 0235

REVISION	
REVISION #	DATE
1	10/27/23

3" EXTRUSIONS

DETAIL #: AR-TL-06-DW2H

RELEASE: 2023

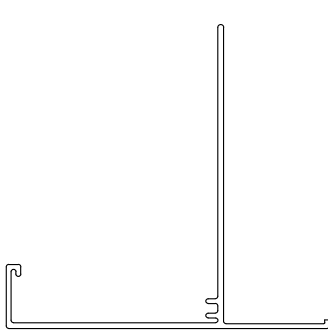
REGION: NORTH AMERICA

www.kingspanpanels.com

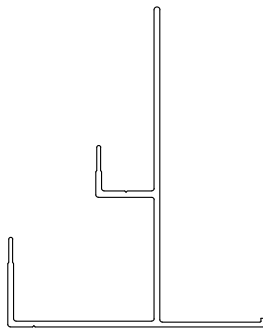


BENCHMARK™

DW-2000R - HORIZONTAL INSTALLATION

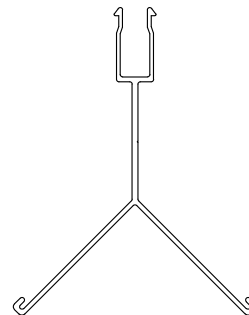
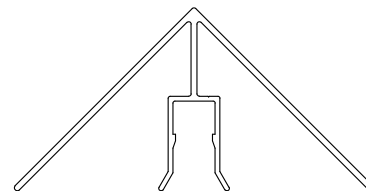


3" STANDARD SOFFIT "D"
EXTRUSION
PART # 0292



3" CONCEALED SOFFIT "E"
EXTRUSION
PART # 3599

INSIDE CORNER EXTRUSION
RECEIVER
PART # 0338



3" INSIDE CORNER EXTRUSION
CAP
PART # 2178

REVISION	
REVISION #	DATE
1	10/27/23

3" EXTRUSIONS

DETAIL #: AR-TL-07-DW2H

RELEASE: 2023

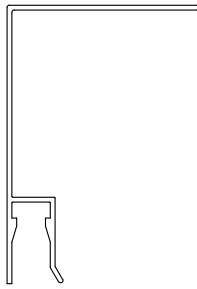
REGION: NORTH AMERICA

www.kingspanpanels.com

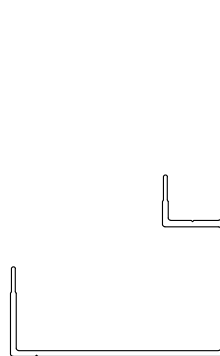


BENCHMARK™

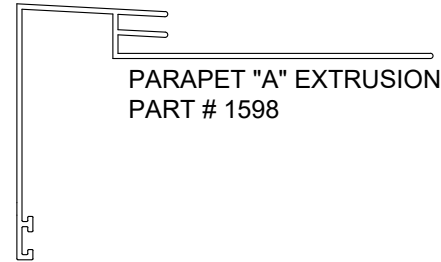
DW-2000R - HORIZONTAL INSTALLATION



4" TWO PIECE
ENDWALL/JAMB
EXTRUSION RECEIVER
PART # 4266



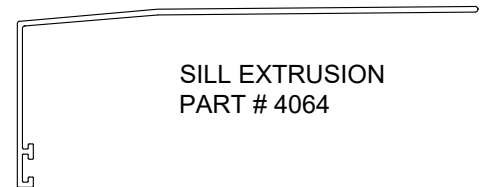
4" PANEL CONCEALED BASE
"D" EXTRUSION
PART # 3595



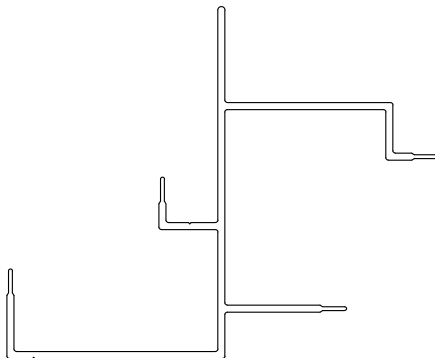
PARAPET "A" EXTRUSION
PART # 1598



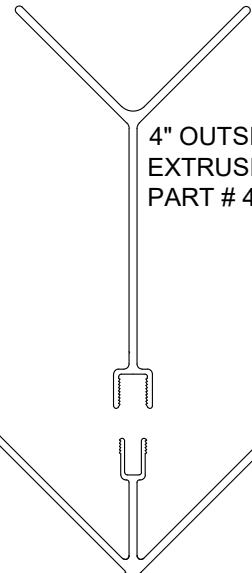
TWO PIECE ENDWALL/JAMB
EXTRUSION CAP
PART # 0215



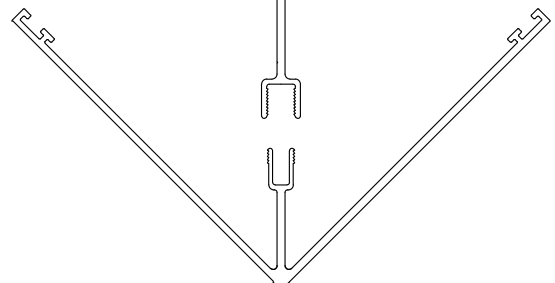
SILL EXTRUSION
PART # 4064



4" PANEL CONCEALED
SOFFIT "A" EXTRUSION
PART # 3645



4" OUTSIDE CORNER
EXTRUSION RECEIVER
PART # 4102



4" OUTSIDE CORNER
EXTRUSION CAP
PART # 4044

REVISION	
REVISION #	DATE
1	10/27/23

4" EXTRUSIONS

DETAIL #: AR-TL-08-DW2H

RELEASE: 2023

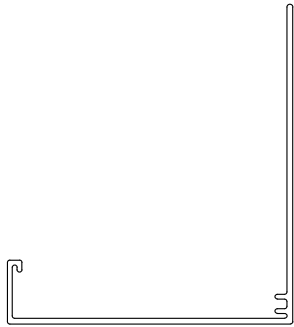
REGION: NORTH AMERICA

www.kingspanpanels.com

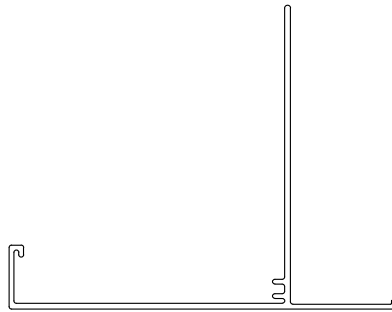


BENCHMARK™

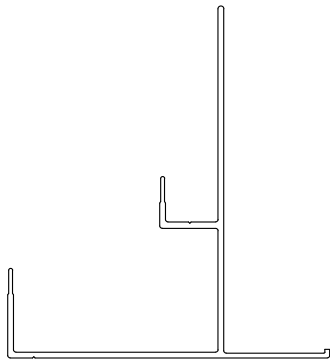
DW-2000R - HORIZONTAL INSTALLATION



4" STANDARD BASE "B"
EXTRUSION
PART # 4097



4" STANDARD SOFFIT "D"
EXTRUSION
PART # 4098



4" FIELD CUT CONCEALED
SOFFIT "E" EXTRUSION
PART # 3600

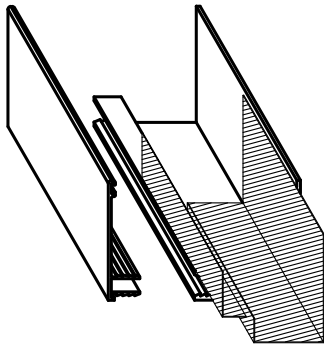
REVISION	
REVISION #	DATE
1	10/27/23

4" EXTRUSIONS

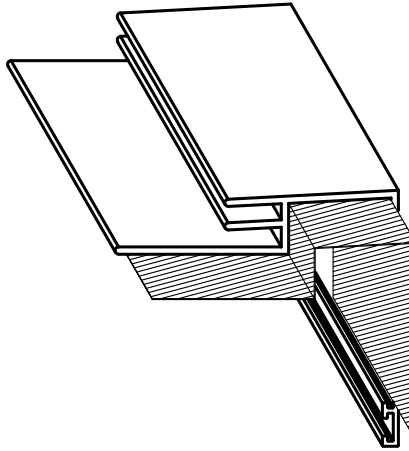
DETAIL #: AR-TL-09-DW2H
RELEASE: 2023
REGION: NORTH AMERICA
www.kingspanpanels.com

 **BENCHMARK™**

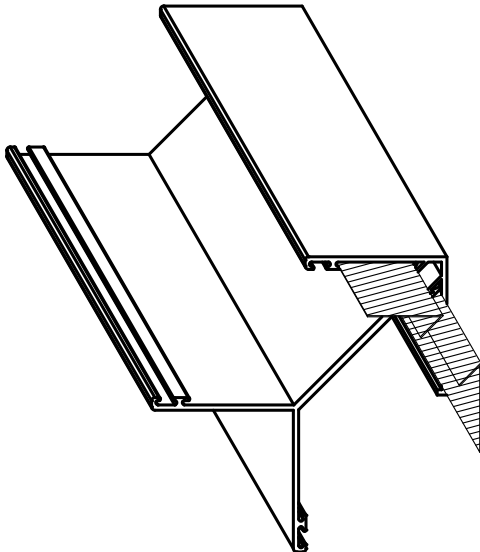
DW-2000R - HORIZONTAL INSTALLATION



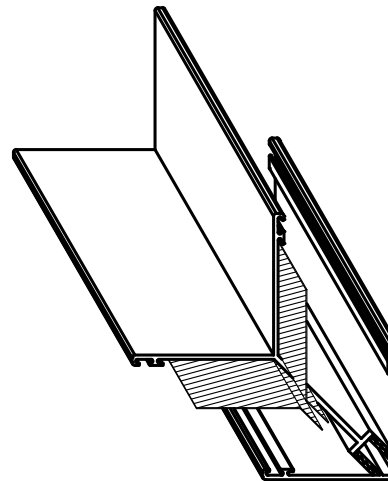
LAP STRIP FOR TWO PIECE
JAMB EXTRUSION



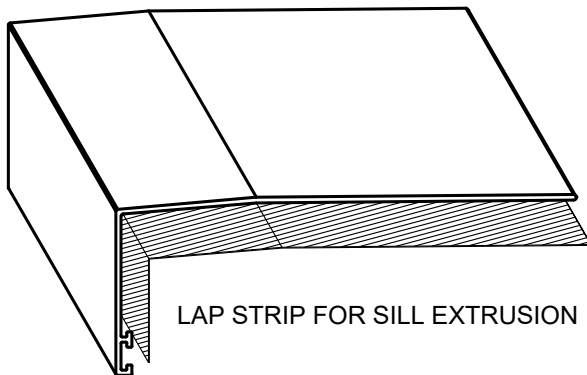
LAP STRIP FOR PARAPET EXTRUSION



LAP STRIPS FOR OUTSIDE CORNER
EXTRUSION



LAP STRIPS FOR INSIDE CORNER
EXTRUSION



LAP STRIP FOR SILL EXTRUSION

REVISION	
REVISION #	DATE
1	10/27/23

EXTRUSION LAP
STRIPS

DETAIL #: AR-TL-10-DW2H

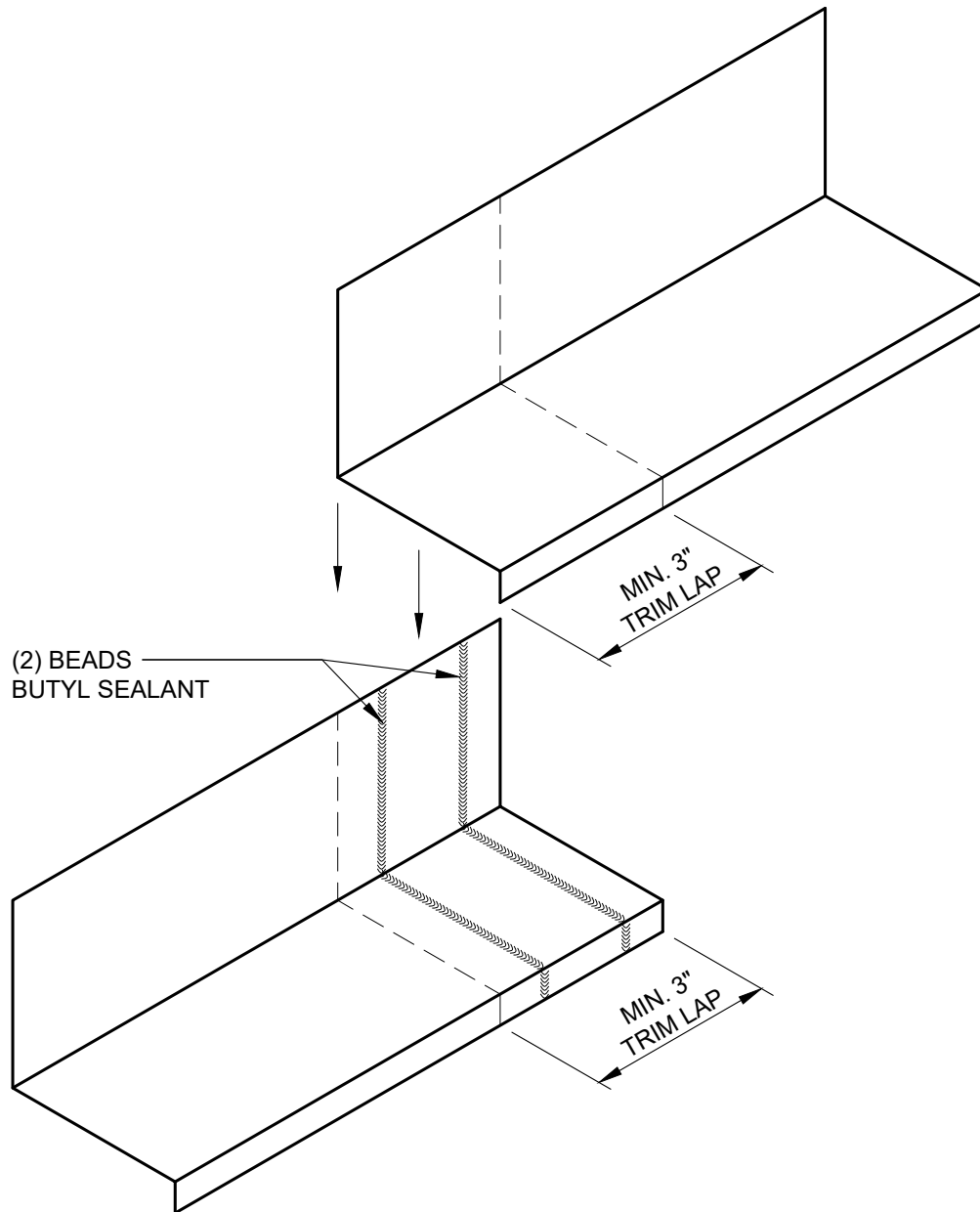
RELEASE: 2023

REGION: NORTH AMERICA

www.kingspanpanels.com

 **BENCHMARK™**

DW-2000R - HORIZONTAL INSTALLATION



REVISION	
REVISION #	DATE
1	10/27/23

TRIM END LAP

DETAIL #: AR-TL-11-DW2H

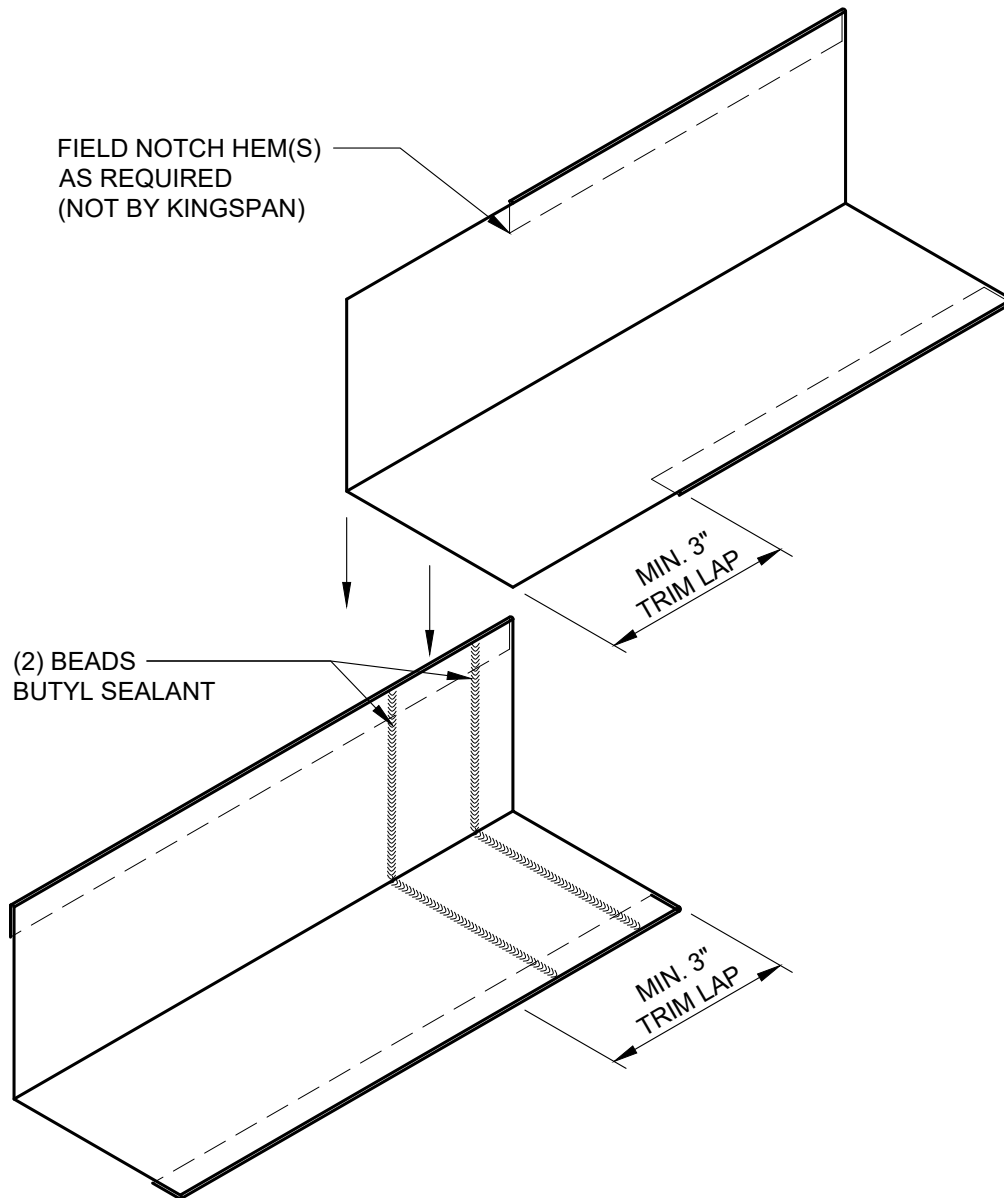
RELEASE: 2023

REGION: NORTH AMERICA

www.kingspanpanels.com



DW-2000R - HORIZONTAL INSTALLATION



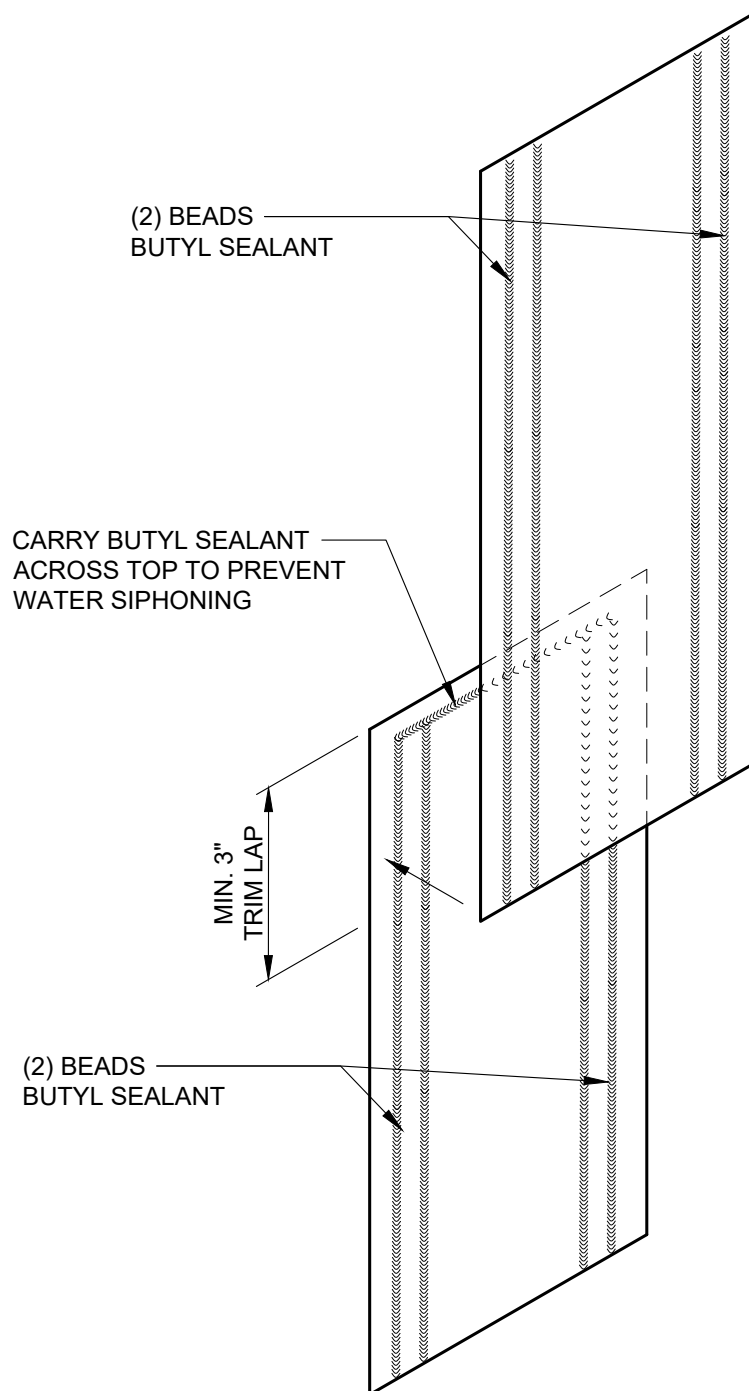
REVISION	
REVISION #	DATE
1	10/27/23

TRIM LAP
WITH HEM

DETAIL #: AR-TL-12-DW2H
RELEASE: 2023
REGION: NORTH AMERICA
www.kingspanpanels.com

 **BENCHMARK™**

DW-2000R - HORIZONTAL INSTALLATION



REVISION	
REVISION #	DATE
1	10/27/23

MENDING PLATE
"SHINGLE" LAP

DETAIL #: AR-TL-13-DW2H

RELEASE: 2023

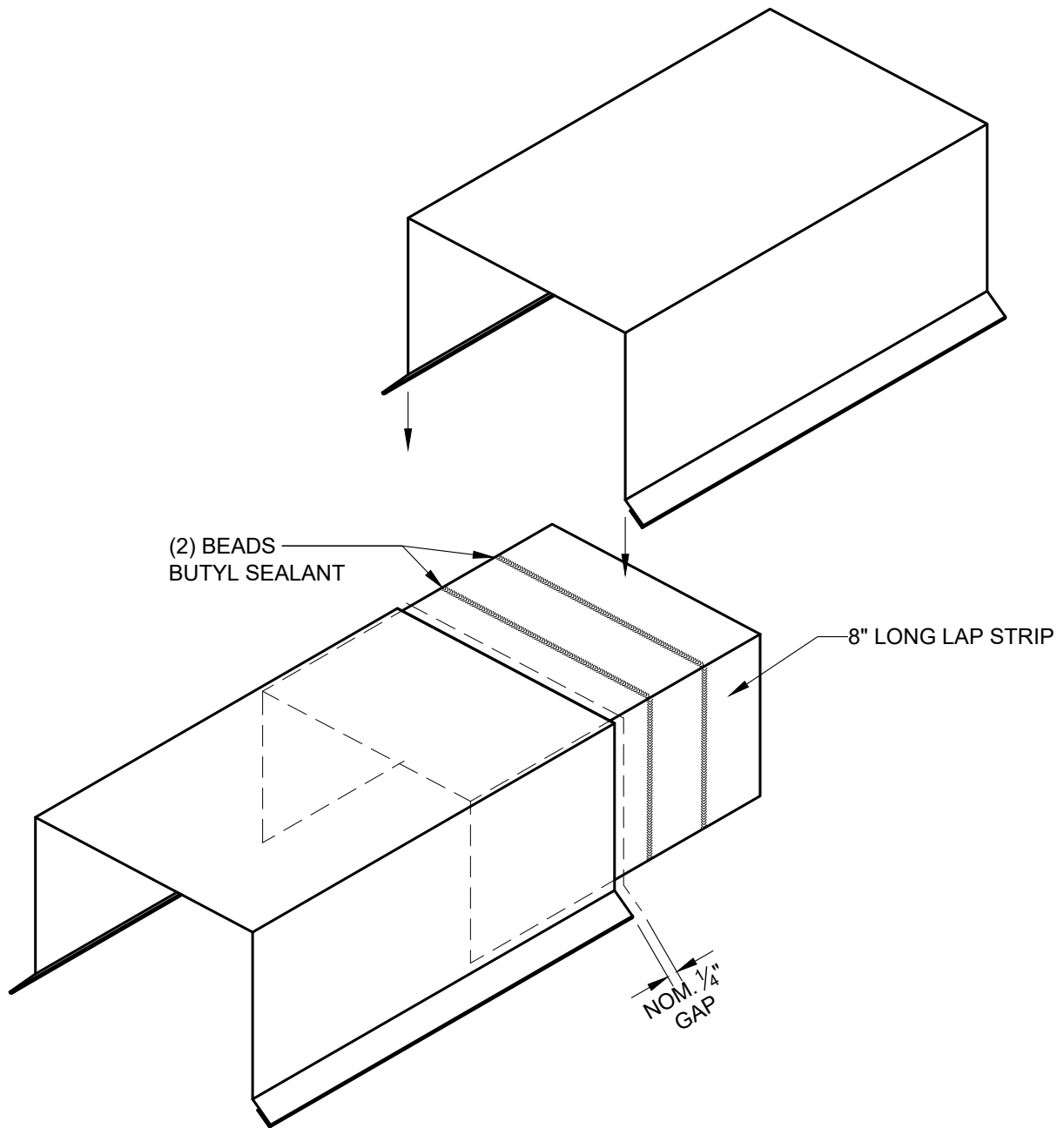
REGION: NORTH AMERICA

www.kingspanpanels.com



BENCHMARK™

DW-2000R - HORIZONTAL INSTALLATION



REVISION	
REVISION #	DATE
1	10/27/23

COPING LAP WITH
LAP STRIP

DETAIL #: AR-TL-14-DW2H

RELEASE: 2023

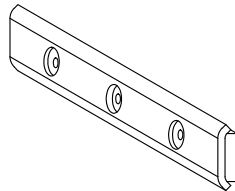
REGION: NORTH AMERICA

www.kingspanpanels.com



BENCHMARK™

DW-2000R - HORIZONTAL INSTALLATION



FASTENING CLIP



VJ-1

2 1/2" RIBBED PANEL



VJ-2

RIBBED PANEL



VJ-2.5

3" RIBBED PANEL



VJ-3

4" RIBBED PANEL

VERTICAL JOINT GASKET

GASKET AVAILABLE IN BLACK OR LIGHT GRAY

REVISION

REVISION #	DATE
1	10/27/23

ACCESSORIES

DETAIL #: AR-TL-15-DW2H

RELEASE: 2023

REGION: NORTH AMERICA

www.kingspanpanels.com



BENCHMARK™