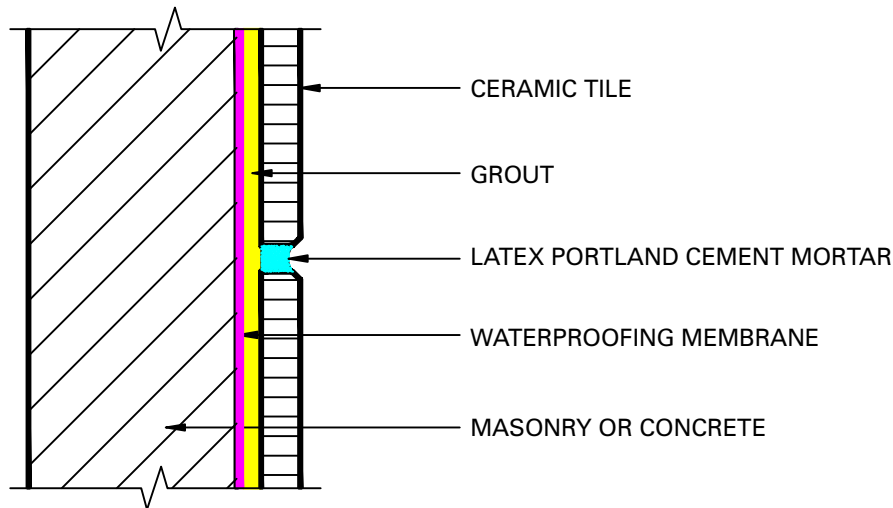


WALLS, EXTERIOR & INTERIOR

Masonry

Latex-Portland Cement Mortar



Grout Options:

- Prism® SureColor® Grout
- Polyblend® Sanded Grout
- Polyblend® Non-Sanded Grout

Waterproofing Membrane Options:

- RedGard® Waterproofing and Crack Prevention Membrane
- Custom® 9240 Waterproofing and Anti-Fracture Membrane

Latex Portland Cement Mortar Options:

- MegaLite® Crack Prevention Mortar
- MegaFlex® Crack Prevention Mortar
- FlexBond® Crack Prevention Mortar
- ProLite® Tile & Stone Mortar
- VersaBond Flex® Fortified Thin-Set Mortar
- Porcelain Tile Fortified Thin-Set Mortar

Rapid Setting Mortars:

- MegaLite® Rapid Set Crack Prevention Mortar
- ProLite® Rapid Set Tile & Stone Mortar
- SpeedSet™ Fortified Thin-Set Mortar

These drawings have been taken from Tile Council of America's (TCA) Handbook for Ceramic Tile Installation and are also compatible with the drawings in Terrazzo, Tile and Marble Association of Canada's (TTMAC) Handbook. For your convenience, Custom Building Products options are substituted for TCA's and TTMAC's generic product descriptions. Please refer to the handbooks for complete information.



CUSTOM
BUILDING PRODUCTS