

- NOTES:
1. POWER REQUIREMENTS: 110VAC, 1PH, 20A. CONFIGURE ELECTRICAL PANEL TO MATCH BUILDING POWER SUPPLY.
 2. CONTROL LOCATION TO BE DETERMINED IN COORDINATION WITH GENERAL CONTRACTOR UPON SITE VISIT. MUST BE WITHIN VISUAL LINE OF SIGHT OF THE DOOR AND 60" ABOVE FINISHED FLOOR.
 3. FINISH: MILL FINISH
 4. FASCIA PANEL SHEETING: .090 SOLID ALUM
 5. GATE PANEL SHEETING: 1-1/2" No.125 FLT EXP ALUM
 6. CLEAN PARTS FREE OF SLAG, SOOT, OIL AND DIRT.
 7. MILLER SENSING EDGE APPROX WEIGHT: 15.4 LBS (FOR GATE CALIBRATION)

GARAGE DOOR: P208

PARTS LIST	
QTY	DESCRIPTION
1	LH NON-MONITORED ME-123 MILLER EDGE WITH CA3 ALUM 218"
1	OPB012 3 BUTTON STATION 3-PBS
2	OPH178K-DDS LIGHT CURTAIN MOUNTING BRACKETS
1	OPH186 SET OF MILLER MLC-K72 6FT MONITORED LIGHT CURTAINS
1	ORC315 MULTI-CODE RECIEVER 1099-50
1	ORC340 MULTI-CODE REVERSE EDGE TRANSMITTER
1	OSE525 BEA LZR-I30 LASER SENSOR
1	SCS402 #40 CHAIN
1	V.L.G IDLER TOWER ASSY
2	V.L.G. INTERMEDIATE PANEL ASSY
1	V.L.G. WEIGHTBOX TOWER ASSY
1	MICANAN TITAN GHS447 OPERATOR
1	OSE516 BEA FALCON XL MOTION SENSOR
1	V.L.G FASCIA PANEL ASSY
1	OOP377 MICANAN TITAN CONTROL PANEL 110VAC 1PH
1	V.L.G. BEVELED BOTTOM PANEL ASSY



2021 South Grand St. Seattle, WA 98144
PHONE: 1-800-561-0765
FAX: 206-324-9104
EMAIL: info@davisdoor.com

MAIN ASSEMBLY

GARAGE DOOR #P208

123456A

JOB NUMBER

INWALL PROJ

JOB NAME

BUILDING OWNER

OWNER / PROPERTY MANAGER

ARCHITECT

DAVIS DOOR DEALER

DDS MANAGER

ORDERED BY

DRAWN BY: Jerry D

SCALE: 1/28

VERSION: 1

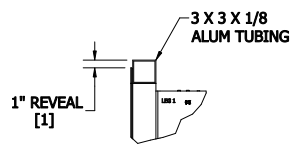
PROJ: 101

SHEETS: 1 OF 1

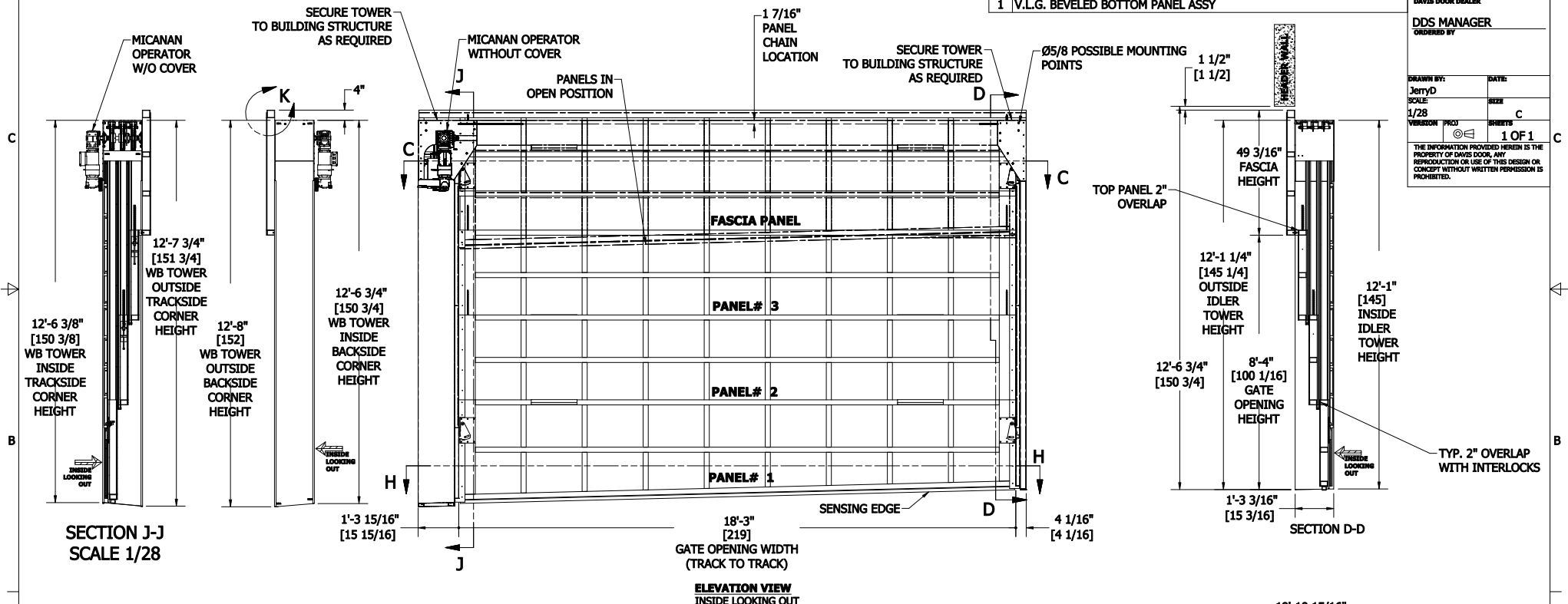
DATE: 1/28

SIZE: C

THE INFORMATION PROVIDED HEREIN IS THE PROPERTY OF DAVIS DOOR, ANY REPRODUCTION OR USE OF THIS DESIGN OR CONCEPT WITHOUT WRITTEN PERMISSION IS PROHIBITED.

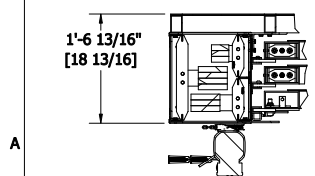


DETAIL K
SCALE 1/12

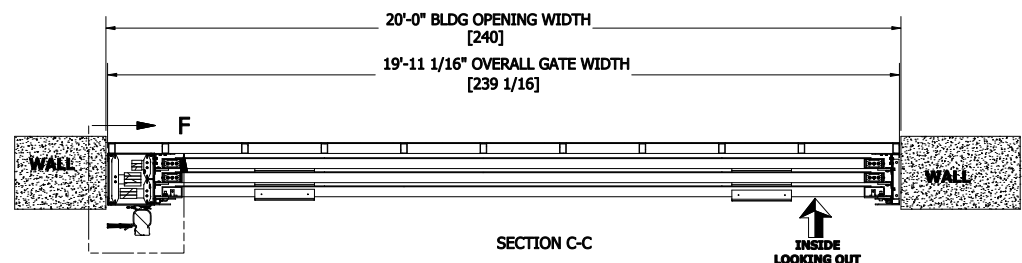


SECTION J-J
SCALE 1/28

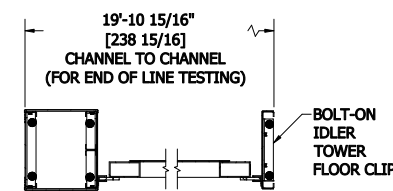
SECTION D-D



DETAIL F
COUNTERWEIGHT TAB ORIENTATION



SECTION C-C



SECTION H-H
FLOOR ANCHOR POINTS