

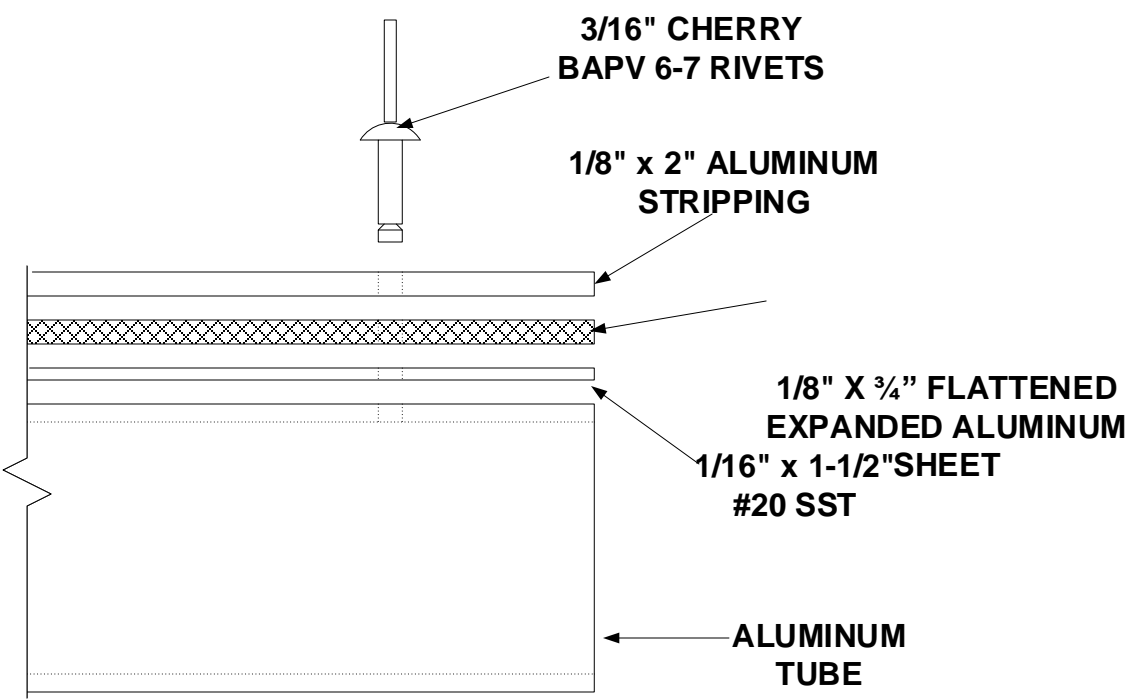
INSIDE
LOOKING OUT

PANEL FRAME WILL BE
CONSTRUCTED USING
2" X 3" X 1/8" ALUMINUM
TUBING WITH THE
EXCEPTION OF THE BOTTOM
RAIL WHICH IS A
3" X 6" X 3/16" ALUMINUM
TUBE

ALL DIMENSIONS WILL BE FIELD VERIFIED
PRIOR TO CONSTRUCTION

MAKE ONE SLIDING
GATE PANEL AS SHOWN
BELOW

NOTE : A 2" X 2" X 1/4"
ALUMINUM CHANNEL
GUIDE WILL BE WELDED
ALONG THE TOP RAIL AS
SHOWN



THE GATE PANEL WILL BE
SKINNED WITH 1/8" X 3/4"
FLATTENED EXPANDED
ALUMINUM SHEETING **ON THE
OUTSIDE FACE (THE INSIDE FACE
IS SHOWN ON THIS DRAWING)**

THERE WILL BE A 4" REVEAL ON
THE BOTTOM ONLY

CHECK CUT	ITEM	QTY.	DESCRIPTION
TUBING			
			2" X 3" X 1/8" ALUMINUM TUBE
	4 pcs	@	272"
	2 pcs	@	93 1/2"
	22 pcs	@	20 1/2"
	11 pcs	@	19 1/2"
	11 pcs	@	19"
			3" X 3" X 1/8" ALUMINUM TUBE
	2 pcs	@	15"
			3" X 6" X 3/16" ALUMINUM TUBE
	1 pc	@	272"
ANGLE			
			3" X 4" X 1/4" ALUMINUM ANGLE
	2 pcs	@	5" (CHAIN PICK-UP BRACKETS)
			4" X 4" X 1/4" STEEL ANGLE
	1 pc	@	12" (GUIDE SHOE BRACKET)
FLAT BAR			
			1/8" X 2" ALUMINUM FLAT BAR
	10 pcs	@	136"
	2 pcs	@	89 1/2"
	22 pcs	@	20 1/2"
	11 pcs	@	19 1/2"
	11 pcs	@	19"
			1/4" X 2" ALUMINUM FLAT BAR
	4 pcs	@	3" (WHEEL SHIMS)
			1/4" X 4" ALUMINUM FLAT BAR
	2 pcs	@	CUT TO FIT GUSSETS
CHANNEL			
			2" X 2" X 1/4" ALUMINUM CHANNEL
	1 pc	@	276" (GUIDE)
UHMW			
			2" BLACK UHMW SHEET
	1 pc	@	2 3/4" X 12" (GUIDE BLOCK)
SKIN			
			1/8" X 3/4" FLATTENED EXPANDED ALUMINUM SHEET
	2 pcs	@	119 3/4" X 44 3/4"
	2 pcs	@	17 3/4" X 44 3/4"
	2 pcs	@	119 3/4" X 44 1/4"
	2 pcs	@	17 3/4" X 44 1/4"
			10 GA. GALVANIZED STEEL SHEET (MST145)
	5 pcs	@	5.569 X 108" (GROUND TRACK – HSD189K)
			*STEEL BRACKETS WILL BE PAINTED ALUMINUM
			COLOR (MMS297)

DAVIS DOOR SERVICE, INC.
2021 South Grand St.
Seattle, WA
98144
1-800-561-6765
FAX: 206-324-9104
EMAIL: info@davisdoor.com

SLIDING GATE
PANEL

310751

JOB #

JOB NAME

OWNER / PROPERTY MANAGER

DAVIS DOOR SERVICE, INC. DEALER

ARCHITECT

NOTES:

* THIS GATE WILL BE MILL FINISH
AND WILL INCLUDE THE
FOLLOWING PARTS:
__ 1 – ALUMINUM RECEIVER
THROAT 8' 0" TALL (HSD760K)
__ 45' 0" – DDS SLIDING GATE
GROUND TRACK (HSD189K)
__ 2 – STEEL "V" GROOVE WHEEL
6" ELITE (HSD197)
__ 2 – GATE EDGE MOUNTING
TUBES 7" (OSE441K-DDS)
__ 2 - 7' 0" TALL NON-MONITORED
MGS-20 MILLER GATE EDGES
(OSE447)

3/4" : 1'- 0"

SCALE

HOWARD SAVARE
ORDERED BY

KEVIN PURDIE
DRAWN BY

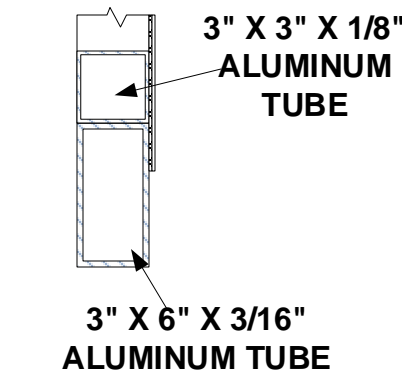
REVISED 6 / 12 / 23
DATE

SLIDING GATE PANEL
GROUND TRACK EXAMPLE
COMPUTER FILE NAME

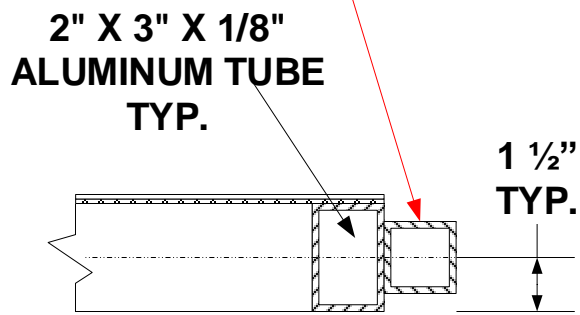
DRAWING # 1 OF 2

COPYRIGHT 2023 DAVIS DOOR SERVICE INC.

VIEW 7
IS SHOWN
BELOW

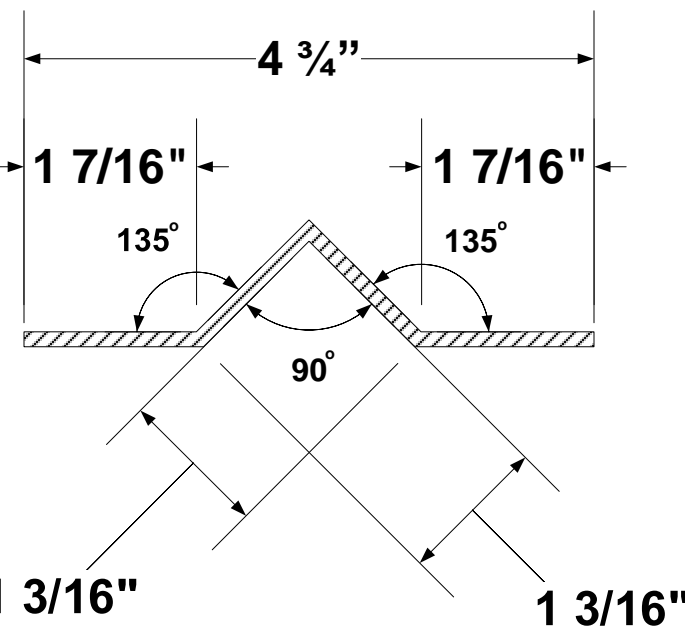
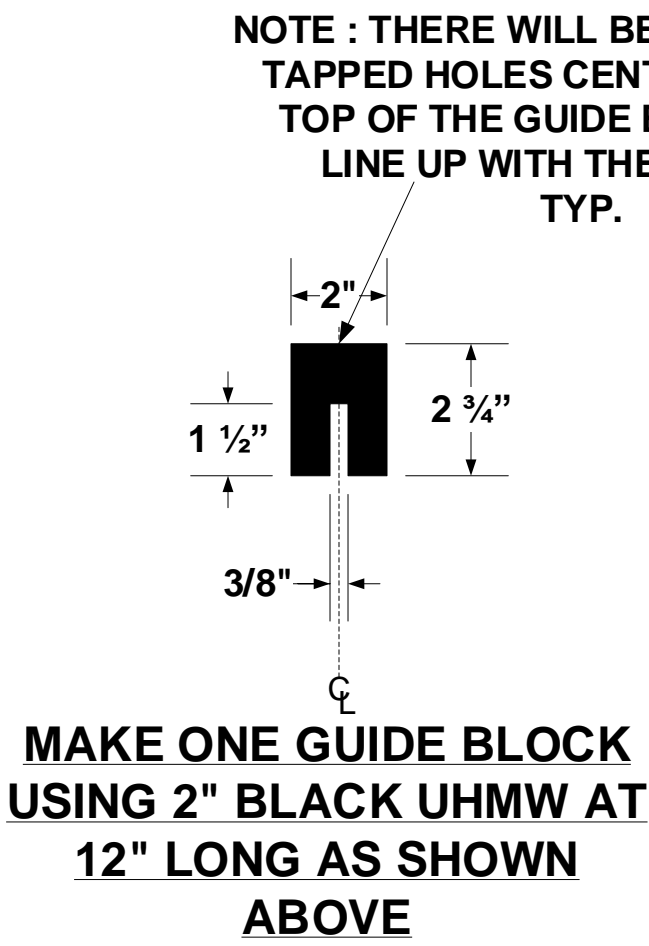


NOTE : THE 2" X 2" X 1/8"
GATE EDGE ALUMINUM
MOUNTING TUBES 6"
(OSE441K-DDS) FOR
MOUNTING THE 7' 0" TALL
MILLER MGS-20 SENSING
EDGES (OSE447) WILL BE
SCREWED IN PLACE
(SAME BOTH ENDS)
TYP.



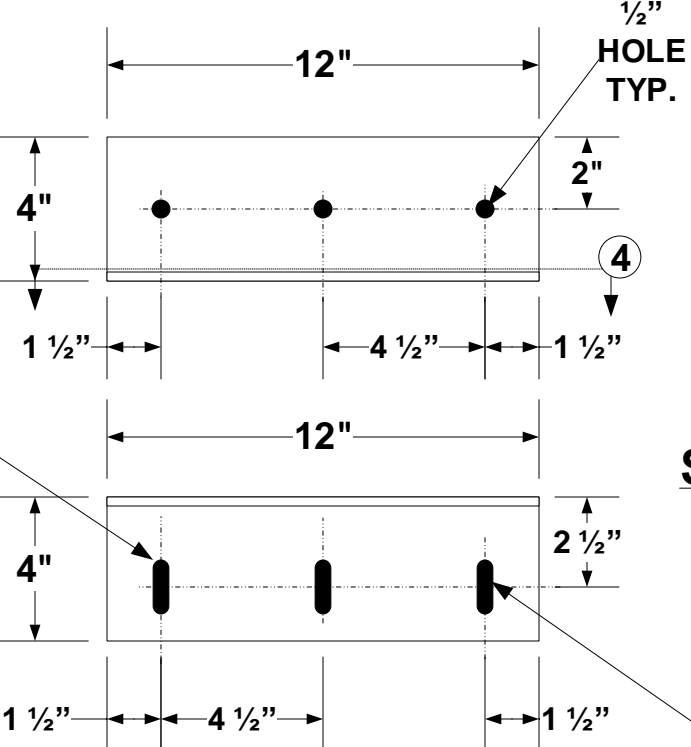
VIEW 2
IS SHOWN
ABOVE

GATE PANEL FRAME IS 3" THICK



VIEW 5
IS SHOWN
ABOVE

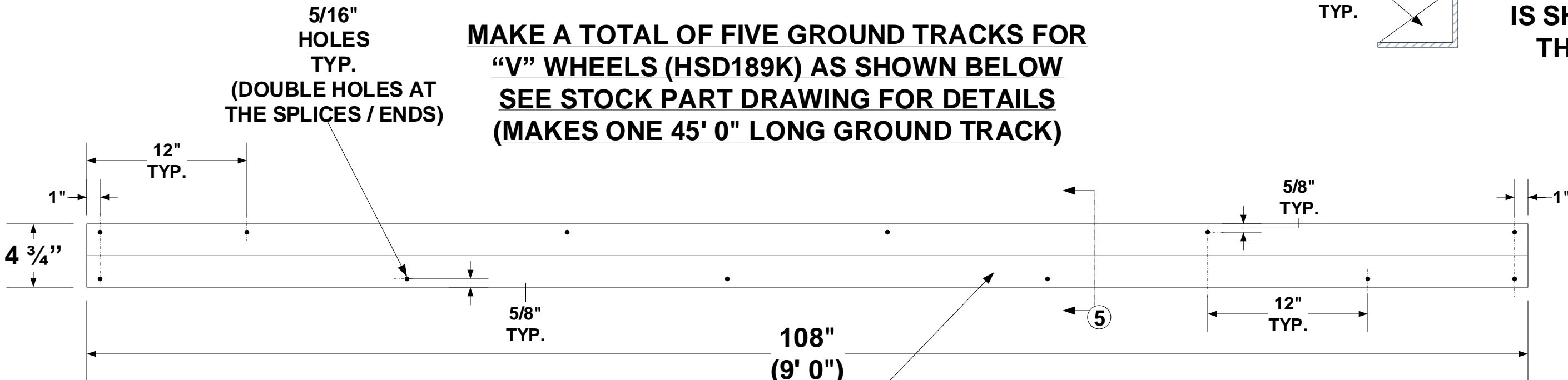
280"
(23' 4")



MAKE ONE GUIDE
SHOE BRACKET
USING 4" X 4" X 1/4"
STEEL ANGLE AS
SHOWN TO THE LEFT

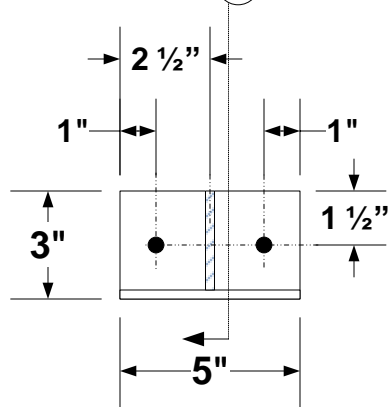
VIEW 4
IS SHOWN
ABOVE

MAKE A TOTAL OF FIVE GROUND TRACKS FOR
"V" WHEELS (HSD189K) AS SHOWN BELOW
SEE STOCK PART DRAWING FOR DETAILS
(MAKES ONE 45' 0" LONG GROUND TRACK)



TRACKS ARE
CONSTRUCTED USING 10
GAUGE GALVANIZED
STEEL SHEET (MST145)

MAKE TWO CHAIN PICK-UP
BRACKETS USING
3" X 4" X 1/4" ALUMINUM
ANGLE AS SHOWN BELOW



NOTE : A 1/4" THICK
ALUMINUM GUSSET
WILL BE WELDED IN
THE CENTER OF EACH
BRACKET
TYP.

VIEW 6
IS SHOWN TO
THE LEFT

NOTE : A 3" X 3" X 1/8"
ALUMINUM TUBE WILL BE
WELDED INTO THIS CORNER
(SAME BOTH ENDS) FOR
ATTACHING THE CHAIN
PICK-UP BRACKETS
TYP.

NOTE : 1/4" X 2" ALUMINUM FLAT
BARS 3" LONG WILL BE TACK
WELDED IN PLACE TO PROVIDE
SHIMS FOR CENTERING THE
WHEELS
TYP.

VIEW 3
IS SHOWN
ABOVE

NOTE : 2 1/4" X 7 1/2" HOLES WILL
BE CUT IN THE BOTTOM OF
THE 3" X 6" X 3/16" ALUMINUM
TUBE BOTTOM RAIL
(CENTERED BENEATH THE
WHEELS) AS SHOWN

VIEW 1
IS SHOWN TO
THE LEFT

INSIDE
FACE

