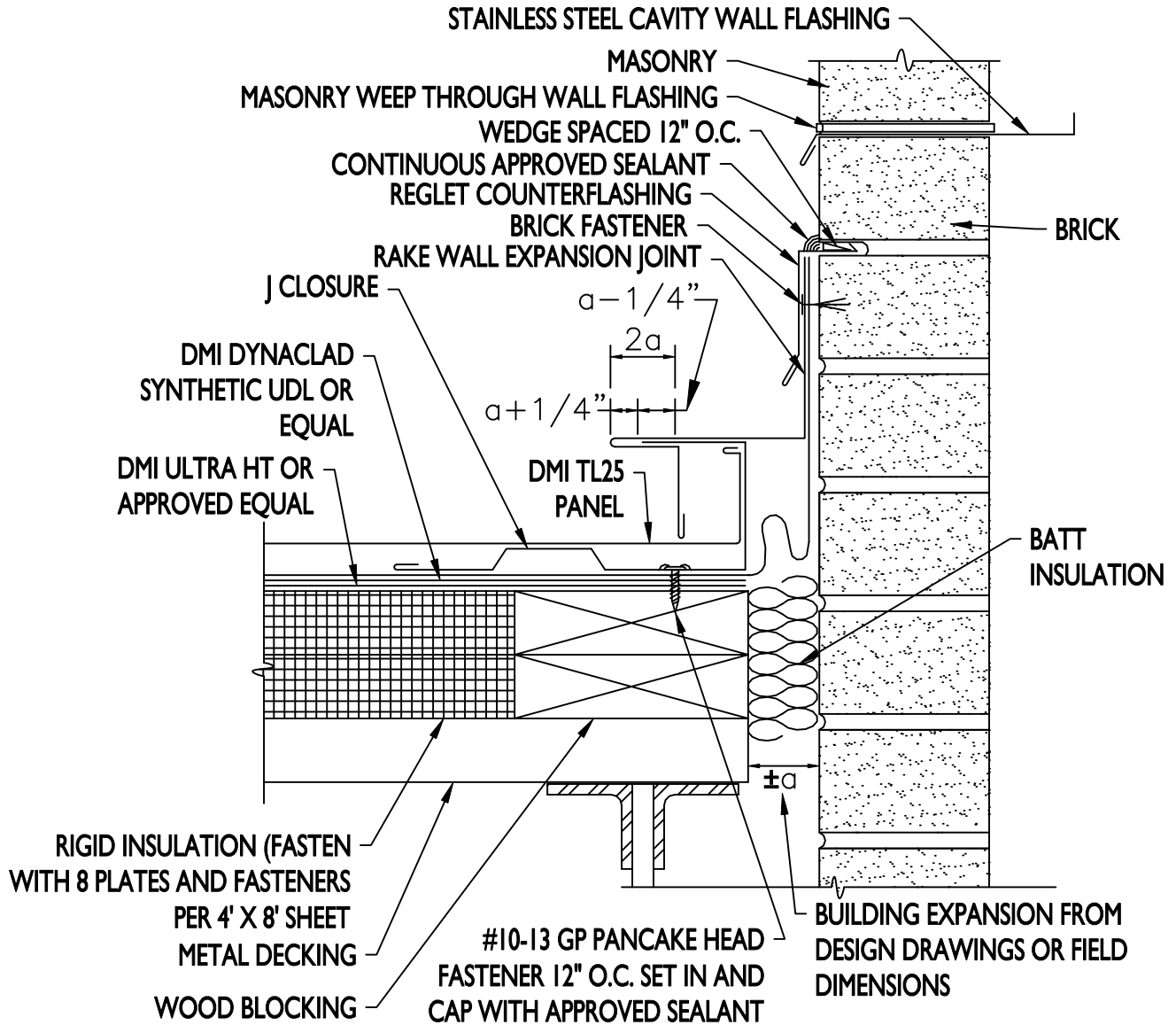


**NOTE**

REGLET FLASHING TO BE INSTALLED BELOW ALL WEEP HOLES.  
SURFACED MOUNT COUNTERFLASHINGS NOT ACCEPTABLE.

**FLASHING LAP NOTE**

LAP RAKE WALL AND REGLET 2" MINIMUM WITH 2 ROWS OF BUTYL SEALANT.



NOTE: ALL DIMENSIONS SHOWN UNLESS OTHERWISE NOTED ARE MINIMUM DIMENSIONS.



**RAKE WALL EXPANSION JOINT**

2014

**DIMENSIONAL METALS, INC.**

3"=1'-0"

**TL25**